

MAGNETOM Avanto

MRI Excellence in 1.5T

For ultra-fast image acquisition. For a dramatic reduction in acoustic noise without compromising gradient performance. For the most comprehensive application range available today. For fast return of investment. For truly seamless workflow automation.

MAGNETOM Avanto. From a clinical, business, and patient perspective, it looks different. It sounds different. And it works different. Welcome to MRI Excellence in 1.5T.

Clinical perspective:

- Exceptional magnet homogeneity for excellent fat saturation
- Large 50 cm Field of View (FoV)
- Strong gradients for high resolution and short scan times
- Unparalleled flexibility, accuracy, and speed – thanks to Tim
- Broad range of dedicated applications



Patient perspective:

- Shorter-than-ever exam times with iPAT
- Up to 97% acoustic noise reduction with AudioComfort
- Feet-first examinations with Tim
- No patient repositioning with Tim
- Ultra-lightweight coils with Tim (Body Matrix 950 g only)
- Highest level of diagnostic confidence

Business perspective:

- Zero Helium boil-off
- Low power requirements and cooling demands
- Fewer purchases of dedicated coils
- Higher patient throughput with shortened examinations times – thanks to Tim

MAGNETOM Mobile MRI Solutions
Driving Innovation

www.siemens.com/healthcare

SIEMENS

Broad range of applications

Head, shoulder, knee, or toe?

MAGNETOM Avanto gives you total flexibility, with innovative applications for each part of the body. And only Tim seamlessly scans up to 205 cm with no patient repositioning or coil changes. For true whole-body functionality.

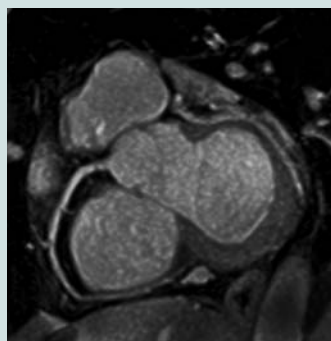
MAGNETOM Avanto MRI Excellence in 1.5T

MAGNETOM Avanto Tim [32x8]

- 8 truly independent RF-channels
- Q-engine: 33mT/m@125T/m/s
- 50 cm FoV

MAGNETOM Avanto Tim [76x18] and [76x32]

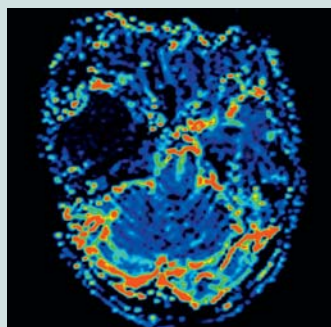
- 18- or 32-channel option
- SQ-engine option: 45mT/m@200T/m/s
- 50 cm FoV



Fat saturation
MAGNETOM Avanto excels in cardiac MRI. With strong gradients, superb Parallel Imaging with syngo GRAPPA, and high magnet homogeneity. Everything desired for heart MRI.



Large FoV
50 cm Field of View provides a perfect view of pathologies.



Perfusion MRI
With strong gradients, MAGNETOM Avanto delivers excellent temporal and spatial resolution.

wholeANGIO

With the flexibility of Tim's coil combinations, any Field of View up to 205 cm can be addressed. Accurate to see tiny vessels. And fast with Parallel Imaging from head to toe: TA 1:27 min.

Global Siemens Healthcare

Siemens AG
Wittelsbacherplatz 2
80333 Muenchen
Germany

Global Siemens Healthcare Headquarters

Siemens AG
Healthcare Sector
Henkestr. 127
91052 Erlangen
Germany
Phone: +49 9131 84-0
www.siemens.com/healthcare

Global Business Unit

Siemens AG
Medical Solutions
Magnetic Resonance
Henkestr. 127
DE-91052 Erlangen
Germany
Phone: +49 9131 84-0

Courtesy of:

University Hospital Grosshadern,
Munich, Germany
University Hospital, Tuebingen,
Germany
Centrum Oncology, Gliwice, Poland
UCLA, Los Angeles, USA

Legal Manufacturer

Siemens AG
Wittelsbacherplatz 2
DE-80333 Muenchen
Germany

www.siemens.com/healthcare