

# MAGNETOM Espree

## The first Open-Bore MRI

MAGNETOM® Espree, the world's first 1.5T Open-Bore MRI, has changed Open MR imaging (MRI) forever. With its compact length of only 125 cm and expanded 70 cm bore diameter, it combines an unprecedented level of comfort with the image quality and diagnostic confidence of high-field MRI.

Powered by Tim™ (Total imaging matrix), MAGNETOM Espree provides a new level of flexibility, accuracy, and speed.

### Clinical perspective:

- Unparalleled flexibility, accuracy, and speed – thanks to Tim
- Broad range of dedicated applications
- Strong gradients for high resolution and short scan times
- Inline Composing – automatically creates fully diagnostic images of the whole spine or even a whole-body angiogram
- AutoAlign – standardize exams so follow-ups provide reliable comparisons
- Phoenix and PhoenixZIP – make it easy to access standard protocols, in a drag-and-drop step, that make exams more reproducible



### Patient perspective:

- 70 cm open bore
- Head outside the system:
  - Ultra-short 125 cm system length
  - Short exam times
- Obese patients up to 250 kg (550 lbs)
- Feet-first examinations with Tim
- No repositioning and coil re-configurations with Tim
- Ultra-lightweight coils with Tim (Body Matrix 950 g only)

### Business perspective:

- Zero Helium boil-off
- Low power requirements and cooling demands
- Fewer purchases of dedicated coils by using flexible coil combinations
- Higher patient throughput with shortened examinations times – thanks to Tim

**MAGNETOM Mobile MRI Solutions**  
Driving Innovation

[www.siemens.com/healthcare](http://www.siemens.com/healthcare)

**SIEMENS**

# Broad range of applications

## Head, shoulder, knee, or toe?

MAGNETOM Espree gives you total flexibility, with innovative applications for each part of the body. And Tim seamlessly scans up to 205 cm with no patient repositioning or coil changes. For true whole-body functionality.

## MAGNETOM Espree The first Open-Bore MRI

### MAGNETOM Espree Tim [32x8]

- 8 truly independent RF-channels
- Z-engine:  
33mT/m@100T/m/s

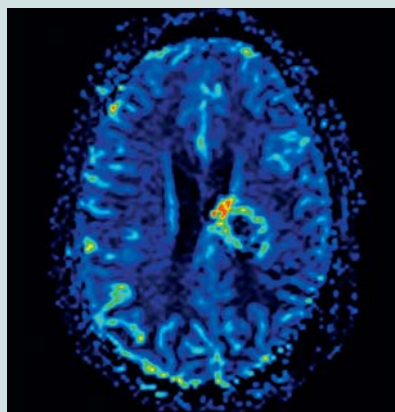
### MAGNETOM Espree Tim [76x18] and [76x32]

- 18- or 32-channel option
- DZ-engine option:  
33mT/m@170T/m/s



### 0.1 mm spatial resolution

Open for high resolution and patient comfort. 1024 matrix. The wrist can be placed comfortably beside the body.



### Perfusion MRI

With strong gradients, MAGNETOM Espree delivers excellent temporal and spatial resolution.

## Global Siemens Healthcare

Siemens AG  
Wittelsbacherplatz 2  
80333 Muenchen  
Germany

## Global Siemens Healthcare Headquarters

Siemens AG  
Healthcare Sector  
Henkestr. 127  
91052 Erlangen  
Germany  
Phone: +49 9131 84-0  
[www.siemens.com/healthcare](http://www.siemens.com/healthcare)

## Global Business Unit

Siemens AG  
Medical Solutions  
Magnetic Resonance  
Henkestr. 127  
DE-91052 Erlangen  
Germany  
Phone: +49 9131 84-0

## Courtesy of:

Barnes-Jewish Hospital, St. Louis, USA  
Turville Bay MRI, Madison, USA

## Legal Manufacturer

Siemens AG  
Wittelsbacherplatz 2  
DE-80333 Muenchen  
Germany

[www.siemens.com/healthcare](http://www.siemens.com/healthcare)