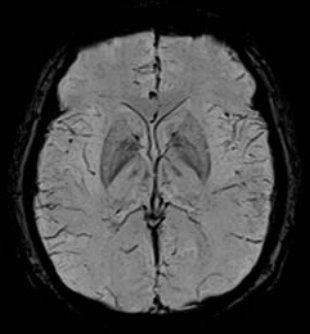


# MAGNETOM Symphony

## Power-class

### Expect more performance



It's already one of the world's most in-demand 1.5T MRIs in its class. And now, we've packed even more power into MAGNETOM Symphony. With a potent array of cutting-edge applications that accelerate performance like never before you'll be able to see the tiniest details with incredible clarity. Breeze through exams with ease. And expand into profitable new areas. MAGNETOM Symphony with Power-class. More power to you.

#### Clinical perspective:

- High diagnostic confidence
- Flexible combination of up to 4 coils thanks to Integrated Panoramic Array
- No patient repositioning with Tim



#### Patient perspective:

- Short exam times
- More relaxing exams
- Easy access

#### Business perspective:

- High patient throughput
- Low investment costs
- Protected high performance investment

**MAGNETOM Mobile MRI Solutions**  
Driving Innovation

[www.siemens.com/healthcare](http://www.siemens.com/healthcare)

**SIEMENS**

# Broad range of applications

## New clinical applications to boost referrals.

With a complete range of clinical applications not available anywhere else, MAGNETOM Symphony with Power-class gives you the ability to serve all kinds of patients, and fulfill any requirements from referring physicians.

## MAGNETOM Symphony Power-class

### Expect more performance

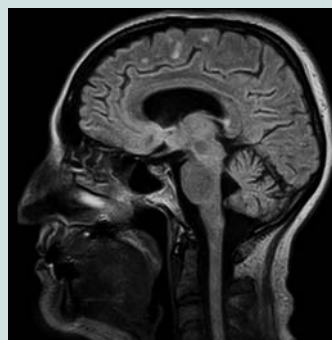
- 4 or 8 truly independent RF-channels
- 50 cm Field of View

### Choose between the gradient systems

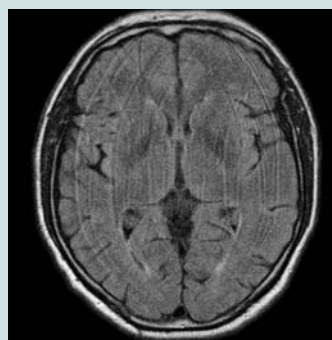
- Quantum with 30mT/m@125T/m/s
- Sprint with 30mT/m@75T/m/s
- Ultra with 20mT/m@50T/m/s



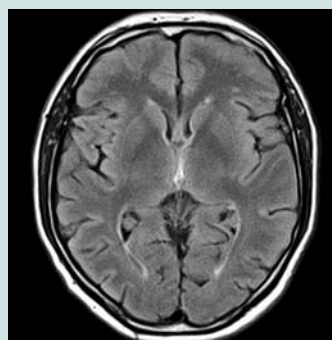
**Fast imaging**  
Parallel Imaging with syngo GRAPPA for fast spine imaging (T2 TSE, TA 50 s, matrix 640).



**Accurate imaging**  
syngo SPACE for visualization of smallest lesions: 3D imaging with all contrasts.



**Robust imaging**  
Motion correction with syngo BLADE: all body parts, all orientations, and all contrasts.



## Global Siemens Healthcare

Siemens AG  
Wittelsbacherplatz 2  
80333 Muenchen  
Germany

## Global Siemens Healthcare Headquarters

Siemens AG  
Healthcare Sector  
Henkestr. 127  
91052 Erlangen  
Germany  
Phone: +49 9131 84-0  
[www.siemens.com/healthcare](http://www.siemens.com/healthcare)

## Global Business Unit

Siemens AG  
Medical Solutions  
Magnetic Resonance  
Henkestr. 127  
DE-91052 Erlangen  
Germany  
Phone: +49 9131 84-0

## Courtesy of:

Kaufmann Krueck Elsner, Blaubeuren,  
Germany  
MR Bremen Nord, Bremen, Germany

## Legal Manufacturer

Siemens AG  
Wittelsbacherplatz 2  
DE-80333 Muenchen  
Germany

[www.siemens.com/healthcare](http://www.siemens.com/healthcare)