



ACUSON Antares Ultrasound System

Transducers

www.siemens.com/healthcare

SIEMENS



CH6-2 Transducer

Part Number:	07465672
Frequency Bandwidth:	2 – 6.67 MHz
Selectable 2D Frequencies:	2.50, 3.64, 4.44, 5.71, 6.67 MHz
Selectable THI Frequencies:	2.00, 2.50, 2.86, 3.33, 3.64 MHz
Selectable Color Doppler Frequencies:	2.5, 3.1, 3.6 MHz
Selectable PW Doppler Frequencies:	2.5, 3.1, 3.6 MHz
Cadence CPS Frequencies:*	2.00, 2.50, 2.86 MHz
Cadence ADI Frequencies:*	1.82, 2.22 MHz
Number of Elements:	192
Footprint:	60.9 mm
Maximum Field of View:	70°
Maximum Display Depth:	240 mm
Biopsy Guide:	SG-5 Needle Guide Kit, PN 07472322
Exam Types:	Abdomen, FetalEcho, OB/GYN, Pediatric Abdomen, Pelvis, Peripheral Vascular, Renal

Design Attributes:

- Hanafy lens transducer technology
- User selectable MultiHertz™ multiple frequency imaging
- Ergonomically designed form factor
- Lightweight transducer with flexible cable



CH4-1 Transducer

Part Number:	07472256
Frequency Bandwidth:	1 – 4 MHz
Selectable 2D Frequencies:	1.82, 2.22, 3.08, 3.64, 4.00 MHz
Selectable THI Frequencies:	1.54, 1.67, 1.82, 2.00, 2.22 MHz
Selectable Color Doppler Frequencies:	1.8, 2.5, 3.3 MHz
Selectable PW Doppler Frequencies:	1.8, 2.5, 3.3 MHz
Cadence CPS Frequencies:*	1.33, 1.54, 2.00 MHz
Cadence ADI Frequencies:*	1.67, 1.82 MHz
Number of Elements:	128
Footprint:	61.0 mm
Maximum Field of View:	70°
Maximum Display Depth:	300 mm
Biopsy Guide:	CH4-1 Needle Guide Kit, PN 07472314
Biopsy Guide Angles:	44°, 29°
Exam Types:	Abdomen, Fetal Echo, OB/GYN, Pelvis, Renal

Design Attributes:

- Hanafy lens transducer technology
- User selectable MultiHertz multiple frequency imaging
- Ergonomically designed form factor
- Lightweight transducer with flexible cable

* At the time of publication, the U.S. Food and Drug Administration has cleared ultrasound contrast agents only for use in LVO. Check the current regulations for the country in which you are currently using this system for contrast agent clearance.



C7F2 Transducer

Part Number:	07481935
Frequency Bandwidth:	2 – 7 MHz
Selectable 2D Frequencies:	2.86, 3.64, 4.44, 5.33, 6.15 MHz
Selectable THI Frequencies:	2.00, 2.50, 2.86, 3.33, 3.64 MHz
Selectable Color Doppler Frequencies:	2.5, 3.1, 3.6 MHz
Selectable PW Doppler Frequencies:	2.5, 3.1, 3.6 MHz
Number of Elements:	192
Footprint:	61.0 mm
Maximum Field of View:	65°
Maximum Display Depth:	300 mm
Biopsy Guide:	C7F2/C5F1 Needle Guide Kit, PN 07843159
Biopsy Guide Angles:	40°, 26°
Exam Types:	Abdomen, Fetal Echo, OB/GYN, Pelvis, Renal

Design Attributes:

- User selectable MultiHertz multiple frequency imaging
- Ergonomically designed form factor
- Lightweight transducer with flexible cable
- Wide bandwidth curved array volume transducer



PX4-1 Transducer

Part Number:	07854149
Frequency Bandwidth:	1 – 4 MHz
Selectable 2D Frequencies:	2.0, 2.5, 3.08, 3.64, 4.21 MHz
Selectable THI Frequencies:	1.67, 1.82, 2.0, 2.22 MHz
Selectable Color Doppler Frequencies:	2.0, 2.5, 3.3 MHz
Selectable PW Doppler Frequencies:	2.0, 2.5, 3.3 MHz
Steerable CW Doppler Frequencies:	2.0, 2.5, 3.3 MHz
Cadence CPS Frequencies:*	1.0, 1.25, 1.54, 1.67, 2.0 MHz
Cadence ADI Frequencies:*	1.82, 2.22 MHz
Number of Elements:	288
Footprint:	19.2 mm
Maximum Field of View:	90°
Maximum Display Depth:	300 mm
Biopsy Guide:	Not Available
Exam Types:	Abdomen, Adult Echo, Fetal Echo, OB/GYN, Pediatric Echo, Pelvis, Renal, Transcranial

Design Attributes:

- Multi-D™ matrix array transducer
- User selectable MultiHertz multiple frequency imaging
- Ergonomically designed form factor
- Lightweight transducer with flexible cable

* At the time of publication, the U.S. Food and Drug Administration has cleared ultrasound contrast agents only for use in LVO. Check the current regulations for the country in which you are currently using this system for contrast agent clearance.



PH4-1 Transducer

Part Number:	07466910
Frequency Bandwidth:	1 – 4 MHz
Selectable 2D Frequencies:	1.82, 2.22, 2.67, 3.08, 4.00 MHz
Selectable THI Frequencies:	1.54, 1.67, 1.82, 2.00, 2.22 MHz
Selectable Color Doppler Frequencies:	2.0, 2.7, 3.3, MHz
Selectable PW Doppler Frequencies:	2.0, 2.7, 3.3, MHz
Cadence CPS Frequencies:*	1.33, 1.43, 1.54, 2.0 MHz
Cadence ADI Frequencies:*	1.82, 2.0, 2.22 MHz
Number of Elements:	128
Footprint:	28.1 mm
Maximum Field of View:	90°
Maximum Display Depth:	300 mm
Biopsy Guide:	SG-2 Needle Guide Kit, PN 07472330
Biopsy Guide Angles:	32°, 18°
Exam Types:	Abdomen, Fetal Echo, OB/GYN, Pelvis, Renal

Design Attributes:

- Hanafy lens transducer technology
- User selectable MultiHertz multiple frequency imaging
- Ergonomically designed form factor
- Lightweight transducer with flexible cable



P10-4 Transducer

Part Number:	07472272
Frequency Bandwidth:	4 – 10 MHz
Selectable 2D Frequencies:	5.00, 6.15, 7.27, 8.00, 10.00 MHz
Selectable THI Frequencies:	2.5, 3.08, 3.64, 4.44, 5.33 MHz
Selectable Color Doppler Frequencies:	4.4, 5.0, 5.7 MHz
Selectable PW Doppler Frequencies:	4.4, 5.0, 5.7 MHz
Number of Elements:	128
Footprint:	13.1 mm
Maximum Field of View:	90°
Maximum Display Depth:	140 mm
Biopsy Guide:	Not available
Exam Types:	Abdomen, Neonatal Echo, Neonatal Head, Pediatric Abdomen, Pediatric Echo, Pelvis, Renal

Design Attributes:

- User selectable MultiHertz multiple frequency imaging
- Ergonomically designed form factor
- Lightweight transducer with flexible cable



VFX13-5 Transducer

Part Number:	04838863
Frequency Bandwidth:	5 – 13 MHz
Selectable 2D Frequencies:	7.3, 8.0, 8.9, 10.0, 11.4 MHz
Selectable THI Frequencies:	4.0, 4.4, 5.0, 5.7, 6.15, 6.7 MHz
Selectable Color Doppler Frequencies:	5.3, 6.2, 7.3, 8.9 MHz
Selectable PW Doppler Frequencies:	5.3, 6.2, 7.3, 8.9 MHz
Cadence CPS Frequencies:*	4.0, 5.7, 6.67, 7.27, 10.0 MHz
2D Steering Angle:	max +/- 20°
Color Doppler Steering Angle:	max +/- 20°
PW Doppler Steering Angle:	max +/- 20°
Number of Elements:	576
Footprint:	39.0 mm
Maximum Field of View:	40°
Maximum Display Depth:	60 mm
Biopsy Guide:	SG-4 Needle Guide Kit, PN 7296499
Biopsy Guide Angles:	53°
Exam Types:	Breast, Cerebrovascular, Digital, Musculoskeletal, Penile, Superficial Musculoskeletal, Testicle, Thyroid

Design Attributes:

- Multi-D matrix array transducer
- Virtual format imaging
- User selectable MultiHertz multiple frequency imaging
- Ergonomically designed form factor
- Lightweight transducer with flexible cable



VFX9-4 Transducer

Part Number:	05936237
Frequency Bandwidth:	4 – 9 MHz
Selectable 2D Frequencies:	4.0, 5.0, 6.15, 7.27, 8.89 MHz
Selectable THI Frequencies:	2.86, 3.08, 3.33, 3.81, 4.21 MHz
Selectable Color Doppler Frequencies:	4.0, 5.0, 6.7 MHz
Selectable PW Doppler Frequencies:	4.0, 5.0, 6.7 MHz
2D Steering Angle:	max +/- 20°
Color Doppler Steering Angle:	max +/- 20°
PW Doppler Steering Angle:	max +/- 20°
Number of Elements:	576
Footprint:	38.1 mm
Maximum Field of View:	60°
Maximum Display Depth:	140 mm
Biopsy Guide:	SG-3 Needle Guide Kit, PN 7296481
Biopsy Guide Angles:	51°, 39°
Exam Types:	Abdomen, Breast, Cerebrovascular, Fetal Echo, Musculoskeletal, OB/GYN, Pediatric Abdomen, Pediatric Hip, Pelvis, Penile, Peripheral Vascular, Testicle, Thyroid

Design Attributes:

- Multi-D matrix array transducer
- Virtual format imaging
- User selectable MultiHertz multiple frequency imaging
- Lightweight transducer with flexible cable



VF13-5 Transducer

Part Number:	04838848
Frequency Bandwidth:	5 – 13 MHz
Selectable 2D Frequencies:	7.27, 8.00, 8.89, 10.00, 11.43 MHz
Selectable THI Frequencies:	4.00, 4.44, 5.00, 5.71, 6.15 MHz
Selectable Color Doppler Frequencies:	5.3, 6.2, 7.3, 8.9 MHz
Selectable PW Doppler Frequencies:	5.3, 6.2, 7.3, 8.9 MHz
2D Steering Angle:	max +/- 20°
Color Doppler Steering Angle:	max +/- 20°
PW Doppler Steering Angle:	max +/- 20°
Number of Elements:	192
Footprint:	38.4 mm
Maximum Field of View:	61°
Maximum Display Depth:	70 mm
Biopsy Guide:	SG-4 Needle Guide Kit, PN 7296499
Biopsy Guide Angles:	53°
Exam Types:	Breast, Cerebrovascular, Digital, Musculoskeletal, Superficial Musculoskeletal, Penile, Testicle, Thyroid

Design Attributes:

- Virtual format imaging
- User selectable MultiHertz multiple frequency imaging
- Lightweight transducer with flexible cable



VF13-5SP Transducer

Part Number:	07853703
Frequency Bandwidth:	5 – 13 MHz
Selectable 2D Frequencies:	7.27, 8.00, 8.89, 10.00, 11.43 MHz
Selectable THI Frequencies:	5.71, 6.15 MHz
Selectable Color Doppler Frequencies:	6.2, 7.3 MHz
Selectable PW Doppler Frequencies:	6.2, 7.3 MHz
2D Steering Angle:	max +/- 20°
Color Doppler Steering Angle:	max +/- 20°
PW Doppler Steering Angle:	max +/- 20°
Number of Elements:	128
Footprint:	26.0 mm
Maximum Field of View:	61 mm
Maximum Display Depth:	60 mm
Biopsy Guide:	Not Available
Exam Types:	Breast, Cerebrovascular, Digital, Intraoperative, Superficial Musculoskeletal, Superficial Vascular, Testicle, Thyroid

Design Attributes:

- Virtual format transducer imaging
- User selectable MultiHertz multiple frequency imaging
- Ergonomically designed form factor
- Lightweight transducer with flexible cable



VF10-5 Transducer

Part Number:	04839473
Frequency Bandwidth:	5 – 10 MHz
Selectable 2D Frequencies:	5.71, 6.67, 8.00, 8.89, 10.00 MHz
Selectable THI Frequencies:	3.64, 3.81, 4.21, 4.71, 5.00 MHz
Selectable Color Doppler Frequencies:	4.4, 5.7, 7.3 MHz
Selectable PW Doppler Frequencies:	4.4, 5.7, 7.3 MHz
Cadence CPS Frequencies:*	4.00, 4.44, 5.71, 6.67, 8.00 MHz
2D Steering Angle:	max +/- 20°
Color Doppler Steering Angle:	max +/- 20°
PW Doppler Steering Angle:	max +/- 20°
Number of Elements:	192
Footprint:	38.7 mm
Maximum Field of View:	78°
Maximum Display Depth:	100 mm
Biopsy Guide:	SG-3 Needle Guide Kit, PN 7296481
Biopsy Guide Angles:	51°, 39°
Exam Types:	Breast, Cerebrovascular, Digital, Musculoskeletal, Pediatric Hip, Penile, Peripheral Vascular, Testicle, Thyroid

Design Attributes:

- Virtual format imaging
- User selectable MultiHertz multiple frequency imaging
- Lightweight transducer with flexible cable



EV9F4 Transducer

Part Number:	10031345
Frequency Bandwidth:	4 – 9 MHz
Selectable 2D Frequencies:	4.71, 6.15, 7.27, 8.00, 8.89 MHz
Selectable THI Frequencies:	2.86, 3.33, 3.64, 4.00, 4.44 MHz
Selectable Color Doppler Frequencies:	4.0, 5.3, 7.3 MHz
Selectable PW Doppler Frequencies:	4.0, 5.3, 7.3 MHz
Number of Elements:	192
Footprint:	31.0 mm
Tip Diameter:	25.5 mm
Maximum Field of View:	173°
Maximum Display Depth:	140 mm
Biopsy Guide:	EV9F4 Needle Guide Kit, PN 10031556
Biopsy Guide Angles:	4°
Exam Types:	Fetal Echo, Neonatal Head, OB/GYN

Design Attributes:

- Wide bandwidth endovaginal volume transducer
- User selectable MultiHertz multiple frequency imaging
- Lightweight transducer with flexible cable



EC9-4 Transducer

Part Number:	04839549
Frequency Bandwidth:	4 – 9 MHz
Selectable 2D Frequencies:	3.64, 4.71, 6.15, 7.27, 8.00 MHz
Selectable THI Frequencies:	2.50, 2.86, 3.33, 3.64, 4.00 MHz
Selectable Color Doppler Frequencies:	3.6, 5.0, 6.1 MHz
Selectable PW Doppler Frequencies:	3.6, 5.0, 6.1 MHz
Number of Elements:	192
Footprint:	32.0 mm
Tip Diameter:	22 mm
Maximum Field of View:	170°
Maximum Display Depth:	140 mm
Biopsy Guide:	EC1 Needle Guide Kit, PN 7296507 EC9-4 Disposable Needle Kit, PN 7297588
Biopsy Guide Angles:	0°, 0°
Exam Types:	Neonatal Head, OB/GYN, Prostate

Design Attributes:

- User selectable MultiHertz multiple frequency imaging
- Ergonomically designed form factor
- Lightweight transducer with flexible cable
- Wide bandwidth endocavity volume transducer



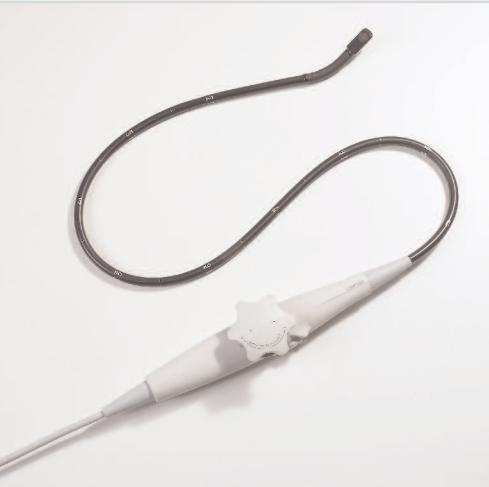
CW5 Transducer

Part Number:	07472777
Selectable CW Doppler Frequencies:	5.0 MHz
Number of Elements:	2
Diameter:	11.3 mm
Biopsy Guide:	Not Available
Exam Types:	Cerebrovascular, Neonatal Echo, Pediatric Echo, Penile, Peripheral Vascular, Transcranial



CW2 Doppler Pencil Transducer

Part Number:	07472744
Selectable CW Doppler Frequencies:	2.1 MHz
Number of Elements:	2
Diameter:	17.2 mm
Biopsy Guide:	Not Available
Exam Types:	Adult Echo, Cerebrovascular, Neonatal Echo, Pediatric Echo, Peripheral Vascular, Transcranial



V5Ms Transducer

Part Number:	10038208 (with micro-pinless adapter) 10038209 (micro-pinless adaptor only)
Frequency Bandwidth:	3 – 7 MHz
Selectable 2D Frequencies:	3.64, 5.00, 6.15, 7.27 MHz
Selectable Color Doppler Frequencies:	3.3, 3.6, 3.8, 4.7 MHz
Selectable PW Doppler Frequencies:	3.3, 3.6, 3.8, 4.7 MHz
Steerable CW Doppler Frequencies:	3.3, 3.6, 3.8, 4.7 MHz
Number of Elements:	64
Maximum Field of View:	90°
Maximum Display Depth:	180 mm
Tip Articulation Range:	Anterior: 120°, Posterior: 90°, Left/Right: 45°
Biopsy Guide:	Not Available
Compatible With:	ACUSON S2000™ ultrasound system ACUSON X300™ ultrasound system ACUSON X300™ ultrasound system, premium edition ACUSON Sequoia™ ultrasound system ACUSON CV70™ ultrasound system ACUSON Cypress™ cardiovascular system ACUSON 128XP/10C™ echocardiography system
Exam Types:	Pediatric Echo, Transesophageal Echo

Design Attributes:

- User selectable MultiHertz multiple frequency imaging
- Adult transesophageal multiplane echocardiography
- 180° motorized crystal rotation
- Wide bandwidth phased array transducer

128 XP/10C, ACUSON, Antares, CV70, Cypress, Multi-D, MultiHertz, S2000, Sequoia and X300 are trademarks of Siemens Medical Solutions USA, Inc.

Local Contact Information

Siemens Medical Solutions USA, Inc.
51 Valley Stream Parkway
Malvern, PA 19355-1406
USA
Phone: +1-888-826-9702
www.usa.siemens.com/healthcare

Europe: + 49 9131 84-0
Asia Pacific: + 65 6490 6000

Global Business Unit

Siemens Medical Solutions USA, Inc.
Ultrasound
1230 Shorebird Way
Mountain View, CA 94043
USA
Phone: +1-888-826-9702
www.siemens.com/healthcare

Global Siemens Headquarters

Siemens AG
Wittelsbacherplatz 2
80333 Munich
Germany

Global Siemens Healthcare Headquarters

Siemens AG
Healthcare Sector
Henkestrasse 127
91052 Erlangen
Germany
Phone: + 49 9131 84-0
www.siemens.com/healthcare

Legal Manufacturer

Siemens Medical Solutions USA, Inc.
Ultrasound
1230 Shorebird Way
Mountain View, CA 94043 USA
Phone: +1-888-826-9702
www.siemens.com/healthcare

www.siemens.com/healthcare