



ACUSON S2000™ Ultrasound System

Transducers

Release 2.0

www.siemens.com/healthcare

SIEMENS



7CF2 Transducer

Part Number:	10041222
Frequency Bandwidth:	2 – 7 MHz
Selectable 2D Frequencies:	3.0, 4.5, 6.5 MHz
Selectable THI Frequencies:	4.0, 5.5, 7.0 MHz
Selectable Color Doppler Frequencies:	2.5, 3.25, 3.75 MHz
Selectable PW Doppler Frequencies:	2.5, 3.25, 3.75 MHz
Number of Elements:	192
Footprint:	34 mm x 65 mm
Maximum Field of View:	65°
Maximum Display Depth:	300 mm
Biopsy Guide:	C7F2/C5F1 Needle Guide Kit, PN 10041595
Biopsy Guide Angles:	40°, 25.5°
Exam Types:	Abdomen, Fetal Echo, OB/GYN, Pelvis, Renal

Design Attributes:

- Lightweight transducer with flexible cable
- Ergonomically designed form factor
- User selectable MultiHertz™ multiple frequency imaging
- Wide bandwidth curved array volume transducer



6C2 Transducer

Part Number:	10041591
Frequency Bandwidth:	2 – 6 MHz
Selectable 2D Frequencies:	2.5, 4.5, 6.0 MHz
Selectable THI Frequencies:	4.0, 5.0, 6.0 MHz
Selectable Color Doppler Frequencies:	2.5, 3.25, 3.75 MHz
Selectable PW Doppler Frequencies:	2.5, 3.25, 3.75 MHz
Number of Elements:	192
Footprint:	61 mm
Maximum Field of View:	70°
Maximum Display Depth:	300 mm
Biopsy Guide:	6C2 Needle Guide, PN 10041600
Biopsy Guide Angles:	22°, 0°
Compatible With:	ACUSON Sequoia™ ultrasound system
Exam Types:	Abdomen, Fetal Echo, OB/GYN, Pediatric Abdomen, Pelvis, Peripheral Vascular, Renal

Design Attributes:

- Curved Vector Format
- Hanafy lens transducer technology
- Ergonomically designed form factor



4C1 Transducer

Part Number:	10041590
Frequency Bandwidth:	1 – 4.5 MHz
Selectable 2D Frequencies:	2.0, 3.0, 4.0 MHz
Selectable THI Frequencies:	3.0, 3.5, 4.0, 4.5 MHz
Selectable Color Doppler Frequencies:	2.0, 2.5, 3.5 MHz
Selectable PW Doppler Frequencies:	2.0, 2.5, 3.5 MHz
Cadence CPS Frequencies*:	1.50, 2.0, 2.5 MHz
Cadence ADI Frequencies*:	2.0 MHz
Number of Elements:	128
Footprint:	61 mm
Maximum Field of View:	70°
Maximum Display Depth:	300 mm
Biopsy Guide:	4C1 Needle Guide, PN 10041592
Biopsy Guide Angles:	44.3°, 28.8°
Compatible With:	ACUSON Sequoia ultrasound system ACUSON Aspen™ ultrasound system
Exam Types:	Abdomen, Fetal Echo, OB/GYN, Pelvis, Renal

Design Attributes:

- Curved Vector Format
- Hanafy lens transducer technology
- User selectable MultiHertz imaging



9EVF4 Transducer

Part Number:	10041223
Frequency Bandwidth:	4 – 9 MHz
Selectable 2D Frequencies:	4.0, 7.0, 9.0 MHz
Selectable THI Frequencies:	5.0, 7.0, 9.0 MHz
Selectable Color Doppler Frequencies:	4.0, 5.5, 6.75 MHz
Selectable PW Doppler Frequencies:	4.0, 5.5, 7.5 MHz
Number of Elements:	192
Footprint:	30.7 mm
Tip Diameter:	25.5 mm
Maximum Field of View:	173°
Maximum Display Depth:	160 mm
Biopsy Guide:	EV9F4 Needle Guide Kit, PN 10041596
Biopsy Guide Angles:	4.2°, 0°
Exam Types:	Fetal Echo, Neonatal Head, OB/GYN

Design Attributes:

- Wide bandwidth endovaginal volume transducer
- Lightweight transducer with flexible cable

*At the time of publication, the U.S. Food and Drug Administration has cleared ultrasound contrast agents only for use in LVO. Check the current regulations for the country in which you are using this system for contrast agent clearance.



EC9-4 Transducer

Part Number:	10041225
Frequency Bandwidth:	3.75 – 9 MHz
Selectable 2D Frequencies:	4.0, 6.0, 8.0 MHz
Selectable THI Frequencies:	6.5, 7.0, 8.0 MHz
Selectable Color Doppler Frequencies:	3.75, 5.0, 6.75 MHz
Selectable PW Doppler Frequencies:	3.75, 5.0, 6.75 MHz
Number of Elements:	192
Footprint:	32 mm
Tip Diameter:	22 mm
Maximum Field of View:	170°
Maximum Display Depth:	140 mm
Biopsy Guide:	EC-1 Needle Guide Kit, PN 10041593 EC9-4 Disposable Needle Kit, PN 10041594
Biopsy Guide Angles:	0°, 0°
Exam Types:	Neonatal Head, OB/GYN, Prostate

Design Attributes:

- Ergonomically designed form factor
- Lightweight transducer with flexible cable



EV-8C4 Transducer

Part Number:	8241246
Frequency Bandwidth:	4 – 9 MHz
Selectable 2D Frequencies:	4.0, 6.0, 8.0 MHz
Selectable THI Frequencies:	7.0, 8.0, 9.0 MHz
Selectable Color Doppler Frequencies:	4.2, 5.0, 6.75 MHz
Selectable PW Doppler Frequencies:	4.2, 5.0, 6.75 MHz
Cadence CPS Frequencies:	4.0, 5.0, 8.0 MHz
PW Doppler Steering:	Variable
Aperture:	26 mm
Number of Elements:	128
Array Length:	28.2 mm
Field of View:	135°
Maximum Display Depth:	140 mm
Radius of Curvature:	12.5 mm
Biopsy Guide:	Available on a future release
Exam types:	Endovaginal Gynecology, Endovaginal Obstetrics

Features:

- Tightly curved format
- Wide field of view
- User-selectable Wideband MultiHertz imaging
- Harmonic Compounding

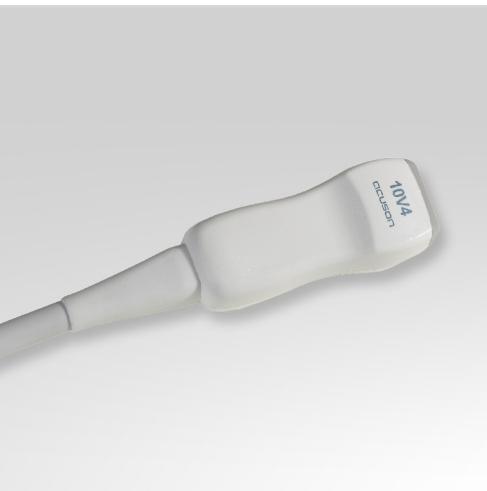


4P1 Transducer

Part Number:	10041224
Frequency Bandwidth:	1 – 4.5 MHz
Selectable 2D Frequencies:	1.75, 2.0, 2.25, 3.0, 4.0 MHz
Selectable THI Frequencies:	3.0, 4.0, 4.5, 4.64 MHz
Selectable Color Doppler Frequencies:	2.0, 2.5, 3.5 MHz
Selectable PW Doppler Frequencies:	2.0, 2.5, 3.5 MHz
Steerable CW Doppler Frequencies:	2.0, 2.5, 3.5 MHz
Number of Elements:	288
Footprint:	19.2 mm
Maximum Field of View:	90°
Maximum Display Depth:	300 mm
Biopsy Guide:	Not Available
Exam Types:	Abdomen, Adult Echo, Fetal Echo, OB/GYN, Pediatric Echo, Pelvis, Renal, Transcranial

Design Attributes:

- Multi-D™ matrix array transducer
- Ergonomically designed form factor
- Lightweight transducer with flexible cable



10V4 Transducer

Part Number:	10041585
Frequency Bandwidth:	4 – 10 MHz
Selectable 2D Frequencies:	4.0, 6.0, 10.0 MHz
Selectable THI Frequencies:	5.0, 6.0, 8.0, 10.0 MHz
Selectable Color Doppler Frequencies:	4.5, 5.0, 6.0 MHz
Selectable PW Doppler Frequencies:	4.0, 4.5, 5.0, 6.0 MHz
Number of Elements:	128
Footprint:	13 mm
Maximum Field of View:	90°
Maximum Display Depth:	140 mm
Biopsy Guide:	Not Available
Compatible With:	ACUSON Sequoia ultrasound system
Exam Types:	Neonatal Echo, Neonatal Head, Pediatric Abdomen, Pediatric Echo, Pelvis, Renal

Design Attributes:

- Vector™ wide-view imaging format
- User selectable MultiHertz imaging



8V3 Transducer

Part Number:	10041586
Frequency Bandwidth:	2.5 – 8 MHz
Selectable 2D Frequencies:	4.0, 5.0, 6.0, 7.0, 8.0 MHz
Selectable THI Frequencies:	5.0, 6.0, 7.0 MHz
Selectable Color Doppler Frequencies:	2.5, 3.25, 3.5, 4.5, 5.0 MHz
Selectable PW Doppler Frequencies:	2.5, 3.25, 3.5, 4.5 MHz
Selectable CW Doppler Frequencies:	2.5, 3.5, 4.0, 4.5 MHz
Steerable CW Doppler Frequencies:	2.5, 3.5, 4.0, 4.5 MHz
Number of Elements:	128
Footprint:	18 mm
Maximum Field of View:	90°
Maximum Display Depth:	180 mm
Biopsy Guide:	Not Available
Compatible With:	ACUSON Sequoia ultrasound system
Exam Types:	Fetal Echo, Neonatal Echo, Neonatal Head, Pediatric Abdomen, Pediatric Echo

Design Attributes:

- Hanafy lens transducer technology
- Vector imaging format
- User selectable MultiHertz imaging



4V1 Transducer

Part Number:	10041584
Frequency Bandwidth:	1 – 4.5 MHz
Selectable 2D Frequencies:	2.0, 3.0, 4.0 MHz
Selectable THI Frequencies:	3.0, 3.5, 4.0, 4.5 MHz
Selectable Color Doppler Frequencies:	2.0, 2.75, 3.5 MHz
Selectable PW Doppler Frequencies:	2.0, 2.75, 3.5 MHz
Number of Elements:	128
Footprint:	28.2 mm
Maximum Field of View:	90°
Maximum Display Depth:	300 mm
Biopsy Guide:	4V1 Needle Guide, PN 10041654
Biopsy Guide Angles:	31.8°, 17.9°
Compatible With:	ACUSON Sequoia ultrasound system ACUSON Aspen ultrasound system
Exam Types:	Abdomen, Fetal Echo, OB/GYN Pelvis, Renal

Design Attributes:

- Hanafy lens transducer technology
- User selectable MultiHertz imaging



4V1c Transducer

Part Number:	100433821
Frequency Bandwidth:	1 – 4.5 MHz
Selectable 2D Frequencies:	2.0, 3.0, 4.0 MHz
Selectable THI Frequencies:	2.5, 3.0, 4.0, 4.5 MHz
Selectable Color Doppler Frequencies:	2.0, 2.5, 3.5 MHz
Selectable PW Doppler Frequencies:	2.0, 2.5, 3.5 MHz
Selectable CW Doppler Frequencies:	1.8, 2.0, 2.5 MHz
Number of Elements:	112
Footprint:	19.2 mm
Maximum Field of View:	90°
Maximum Display Depth:	300 mm
Biopsy Guide:	Not Available
Compatible With:	ACUSON Sequoia ultrasound system
Exam Types:	Adult Echo, Pediatric Echo

Design Attributes:

- Hanafy lens transducer technology
- Vector imaging format
- User selectable MultiHertz imaging
- RF shielding



18L6 HD Transducer

Part Number:	10041227
Frequency Bandwidth:	5.5 – 18 MHz
Selectable 2D Frequencies:	7.0, 10.0, 15.0 MHz
Selectable THI Frequencies:	7.0, 8.0, 12.0, 15.0, 16.0, 17.0 MHz
Selectable Color Doppler Frequencies:	6.0, 7.0, 8.0 MHz
Selectable PW Doppler Frequencies:	6.0, 7.0, 8.0 MHz
Number of Elements:	576
Footprint:	57 mm
Maximum Field of View:	95 mm
Maximum Display Depth:	80 mm
Biopsy Guide:	18L6 HD Needle Guide Kit, PN 10044200
Biopsy Guide Angles:	63.07°, 38.42°
Exam Types:	Breast, Cerebrovascular, Digital, Musculoskeletal, Penile, Peripheral Vascular, Testicle, Thyroid

Design Attributes:

- Hanafy lens transducer technology
- Patented ergonomic design with Elastogrip™ ergonomic grip coating
- Extra-long cable (2.1 m) for ease of use



14L5 SP Transducer

Part Number:	10041226
Frequency Bandwidth:	5 – 14 MHz
Selectable 2D Frequencies:	6.0, 10.0, 14.0 MHz
Selectable THI Frequencies:	11.0, 14.0 MHz
Selectable Color Doppler Frequencies:	5.5, 6.25, 7.5 MHz
Selectable PW Doppler Frequencies:	5.5, 6.25, 7.5 MHz
2D Steering Angle:	max +/- 20°
Color Doppler Steering Angle:	max +/- 20°
PW Doppler Steering Angle:	max +/- 20°
Number of Elements:	128
Footprint:	26 mm
Maximum Field of View:	40°
Maximum Display Depth:	60 mm
Biopsy Guide:	Not Available
Exam Types:	Breast, Cerebrovascular, Digital, Intraoperative Abdomen, Intraoperative Vascular, Musculoskeletal, Testicle, Thyroid

Design Attributes:

- Lightweight transducer with flexible cable
- Ergonomically designed form factor
- Virtual format imaging
- Sterilizable high resolution linear array for special applications



14L5 Transducer

Part Number:	10041221
Frequency Bandwidth:	5 – 14 MHz
Selectable 2D Frequencies:	6.0, 9.0, 14.0 MHz
Selectable THI Frequencies:	7.0, 11.0, 14.0 MHz
Selectable Color Doppler Frequencies:	5.0, 6.5, 7.5 MHz
Selectable PW Doppler Frequencies:	5.5, 6.25, 7.5 MHz
2D Doppler Steering Angle:	max +/- 20°
Color Doppler Steering Angle:	max +/- 20°
PW Doppler Steering Angle:	max +/- 20°
Number of Elements:	576
Footprint:	39 mm
Maximum Field of View:	40°
Maximum Display Depth:	80 mm
Biopsy Guide:	SG-4 Needle Guide Kit, PN 10041599
Biopsy Guide Angles:	53°
Exam Types:	Breast, Cerebrovascular, Digital, Musculoskeletal, OB/GYN, Pediatric Abdomen, Pediatric Hip, Penile, Peripheral Vascular, Testicle, Thyroid

Design Attributes:

- Multi-D matrix transducer
- Ergonomically designed form factor
- Lightweight transducer with flexible cable
- Virtual format imaging



9L4 Transducer

Part Number:	10041588
Frequency Bandwidth:	4 – 9 MHz
Selectable 2D Frequencies:	4.0, 6.0, 9.0 MHz
Selectable THI Frequencies:	7.0, 8.0, 9.0 MHz
Selectable Color Doppler Frequencies:	4.0, 5.0, 6.75 MHz
Selectable PW Doppler Frequencies:	4.0, 5.0, 6.75 MHz
2D Steering Angle:	max \pm 20°
Color Doppler Steering Angle:	max \pm 20°
PW Doppler Steering Angle:	max \pm 20°
Number of Elements:	576
Footprint:	40 mm
Maximum Field of View:	147 mm
Maximum Display Depth:	140 mm
Biopsy Guide:	SG-3 Needle Guide, PN 10041598
Biopsy Guide Angles:	51°, 39°
Compatible With:	ACUSON Sequoia ultrasound system
Exam Types:	Breast, Cerebrovascular, Digital, Musculoskeletal, OB/GYN, Pediatric Abdomen, Pediatric Hip, Pelvis, Penile, Peripheral Vascular, Renal, Testicle, Thyroid

Design Attributes:

- Multi-D matrix transducer
- Ergonomically designed form factor
- Lightweight transducer with flexible cable



V5Ms Transducer

Part Number:	8263703
Frequency Bandwidth:	3 – 7 MHz
Selectable 2D Frequencies:	3.5, 5.0, 6.0, 7.0 MHz
Selectable Color Doppler Frequencies:	3.5, 3.75, 4.0 MHz
Selectable PW Doppler Frequencies:	3.5, 3.75, 4.0 MHz
Selectable CW Doppler Frequencies:	6.0 MHz
Number of Elements:	64
Footprint:	9.6 mm
Maximum Field of View:	90°
Maximum Display Depth:	140 mm
Tip Articulation Range:	Anterior: 120°, Posterior: 90°, Left/Right: 45°
Biopsy Guide:	Not Available
Compatible With:	ACUSON X300™ ultrasound system ACUSON X300 ultrasound system, premium edition ACUSON Sequoia ultrasound system ACUSON Antares™ ultrasound system ACUSON CV70™ cardiovascular system ACUSON Cypress™ cardiovascular system ACUSON Aspen ultrasound system ACUSON 128XP/10C™ echocardiography system
Exam Types:	Transesophageal Echo

Design Attributes:

- Endoscope diameter = 10.5 mm, length = 110 cm
- Adult tip size: width = 14.5 mm, height = 11.5 mm
- Ergonomic design featuring one-hand control with variable speed rotation – 90° per sec
- RF shielding



CW5 Transducer

Part Number:	10041656
Selectable CW Doppler Frequencies:	5 MHz
Number of Elements:	2
Diameter:	11.3 mm
Biopsy Guide:	Not Available
Compatible With:	ACUSON Antares ultrasound system ACUSON X500™ ultrasound system ACUSON X300 ultrasound system SONOLINE G60 S™ ultrasound system ACUSON CV70 cardiovascular system
Exam Types:	Adult Echo, Cerebrovascular, Neonatal Echo, Peripheral Vascular, Pediatric Echo, Transcranial



CW2 Transducer

Part Number:	10041655
Selectable CW Doppler Frequencies:	2 MHz
Number of Elements:	2
Diameter:	17.2 mm
Biopsy Guide:	Not Available
Compatible With:	ACUSON Antares ultrasound system ACUSON X500 ultrasound system ACUSON X300 ultrasound system SONOLINE G60 S ultrasound system ACUSON CV70 cardiovascular system
Exam Types:	Adult Echo, Cerebrovascular, Neonatal Echo, Pediatric Echo, Peripheral Vascular, Transcranial

Local Contact Information

Siemens Medical Solutions USA, Inc.
51 Valley Stream Parkway
Malvern, PA 19355-1406
USA
Phone: +1-888-826-9702
www.usa.siemens.com/healthcare

Europe: + 49 9131 84-0
Asia Pacific: + 65 6490 6000

Global Business Unit Address

Siemens Medical Solutions USA, Inc.
Ultrasound
1230 Shorebird Way
Mountain View, CA 94043
USA
Phone: +1-888-826-9702
www.siemens.com/healthcare

128XP/10C, ACUSON, Antares, Aspen, CV70,
Cypress, Elastogrip, G60 S, Multi-D, MultiHertz,
S2000, Sequoia, Vector, X300 and X500
are trademarks of Siemens Medical Solutions
USA, Inc.

Global Siemens Headquarters

Siemens AG
Wittelsbacherplatz 2
80333 Munich
Germany

Global Siemens Healthcare Headquarters

Siemens AG
Healthcare Sector
Henkestrasse 127
91052 Erlangen
Germany
Phone: + 49 9131 84-0
www.siemens.com/healthcare

Legal Manufacturer

Siemens Medical Solutions USA, Inc.
Ultrasound
1230 Shorebird Way
Mountain View, CA 94043 USA
Phone: +1-888-826-9702
www.siemens.com/healthcare