



Clinical Education 2010

CT training for physicians and technologists

Answers for life.

SIEMENS

Clinical Education 2010

Siemens Healthcare is pleased to offer a comprehensive curriculum that addresses both physicians and technologists. These courses, fellowships, and training programs will deepen your knowledge and help you benefit the most from your Siemens CT scanner and its software applications. You can choose from a wide range of education programs – from application training to clinical education. Profit from the professional knowledge of our education specialists and clinical partners. Optimize your clinical skills to use the full potential of your system.

www.siemens.com/SOMATOEducate





Clinical Workshops

Clinical workshops emphasize fundamental skills on CT Scanners and processing applications. They are conducted by a faculty of clinical experts and include lectures about clinical specialties and live examinations as well as hands-on sessions. CME credits are available for many of them.

All CT clinical workshops are booked through Siemens preferred training partner company, the **Willi Simon Congress and Travel Agency**. The Willi Simon company will work in close cooperation with Siemens and our well-known clinical partners to keep you at the forefront of clinical CT imaging.

To find more information about the courses and to register for a specific course, please go to:
www.siemens.com/SOMATOEducate
(Clinical Workshops)

Our clinical partners:

- Chirurgisches Institut, Gesundheitszentrum Villa am Roseneck, Berlin, Germany
- Friedrich-Alexander-University Erlangen-Nuremberg, Germany
- Ludwig-Maximilians-University Munich, Germany
- Marie Lannelongue Surgical Center, Paris, France
- Medical University of Vienna, Austria



Workshop title	Location	Course language	Course director
Virtuelle CT-Kolonoskopie	Berlin /Germany	German	Prof. Bernd Lünstedt
Clinical Workshop on Cardiac CT	Erlangen /Germany	English	Prof. Dr. Stephan Achenbach
Clinical CTA Interpretation Course	Erlangen /Germany	English	Prof. Dr. Stephan Achenbach
Clinical Workshop on Cardiac CT	Munich /Germany	English	Prof. Dr. Christoph Becker, PD Dr. Nikolaou
Diagnosis of Congenital Heart Defects	Paris /France	English	Dr. Jean Francois Paul
CT-Kolonographie-Workshop	Vienna /Austria	German	Dr. Thomas Mang
Clinical Workshop on Dual Energy	Forchheim /Germany	English	PD Dr. Thorsten Johnson

Your Benefits:



Clinical

- Experience clinically proven workflows for your daily routine work.



Workflow

- Bring your knowledge to a high level of confidence.



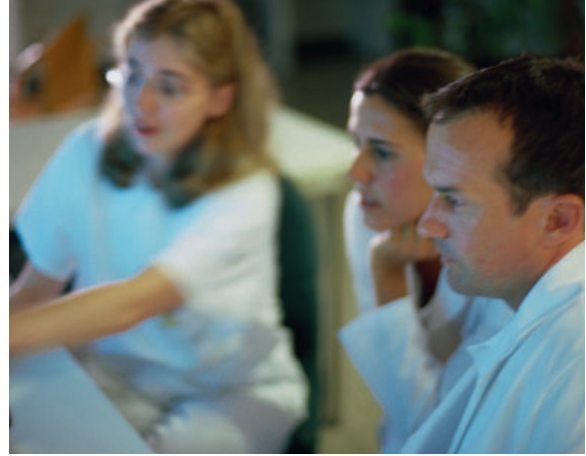
Caring Partner

- Enjoy a relaxed, friendly, and tolerant atmosphere in the classroom.



Financial

- Start to profit from your gained expertise right after the workshop.



Clinical Fellowships

Siemens clinical fellowships contribute towards the genuine sharing of knowledge and expertise from which both parties will benefit. You can improve your medical knowledge and skills while a clinical expert guides you through his/her typical daily workflow. You will learn how examinations and reports are performed on site. This hands-on training moves along at the actual pace of the hospital, giving you a real-life experience.

To find more information about fellowships, please visit: www.siemens.com/SOMATOMEducate (Clinical Fellowships)

To arrange for a clinical fellowship, please contact your local Siemens representative.

Your Benefits:



Clinical

- The ability to create a new area of practice and expand your scope.



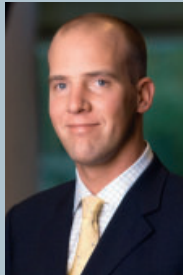
Workflow

- Learn in a one-on-one mentored way from a clinical expert.



Caring Partner

- Exchange your clinical knowledge with renowned clinical experts.



“A fellowship is a valuable training experience, since it offers the opportunity to share knowledge with experienced CT-users and allows the participant to get an insight into other hospital’s workflows.”

Dr. med. Peter Schramm, Dept. of Neuroradiology
University of Göttingen, Göttingen, Germany

Scanner	Country	City	Institute
SOMATOM Definition Flash	Germany	Munich	German Heart Center Munich
	Monaco	Monte Carlo	Monaco Cardio-Thoracic Center
SOMATOM Definition AS+	Germany	Werne	Radiologie Unna Werne
	Germany	Göttingen	Neuroradiology, University Göttingen
SOMATOM Sensation 64	Germany	Frankfurt	Cardiologic Center Bethanien Frankfurt
	Germany	Bottrop	Knappschafts Krankenhaus Bottrop
SOMATOM Emotion 16	Austria	Vienna	Otto Wagner Spital
SOMATOM Emotion 6	Germany	Cologne	Praxis Dr. Brochhagen

“I consider these workshops to be very important as they serve to train the user. Many users – physicians as well as technicians – do not use their system to the full extent, simply because they have not been trained well enough.”

PD Dr. Michael Lell, Erlangen University Hospital,
Erlangen, Germany



Clinical Hands-on Workshops at Conferences

The objective of these hands-on workshops is to provide an update on state-of-the-art CT-techniques. Each course is conducted in a classroom setting and covers topics from image acquisition to processing. They include lectures and hands-on sessions.

Participants have the opportunity to discover how to better utilize the Siemens processing tools through case-based demonstrations by a faculty of clinical experts. Many of them are CME accredited.

For more information please visit our website:
www.siemens.com/SOMATOMEducate
(Clinical HOWs@Conferences)

Your Benefits:



Clinical

- Learn how to push your systems capabilities to the utmost.



Workflow

- Find out how to speed up your daily workflow.



Caring Partner

- Gain knowledge from leading experts in their field.



Financial

- Add hands-on training to make best use of your conference attendance.



Application Training

At Siemens, we take our commitment to our customers and their patients seriously. Operating an advanced system at its maximum capabilities requires a properly trained user.

The Clinical Education Specialists from Siemens provide comprehensive services to help you operate your systems at their best performance. We offer one-to-one application training as well as classroom training during the entire product lifecycle to help you with new solutions and provide support for existing applications and functionalities.

Our Applications Training and Support offerings are available on an ongoing basis to help you instruct new personnel effectively and to refresh the capabilities of your existing operators.

To arrange for application training on site, please contact your local Siemens representative.

Your Benefits:



Clinical

- Keep physicians and technologists up-to-date with the latest applications and technologies.



Workflow

- Improve examination results by utilizing all existing functionalities.



Caring Partner

- Ensure knowledge transfer from Siemens Clinical Education Specialists directly to the user.

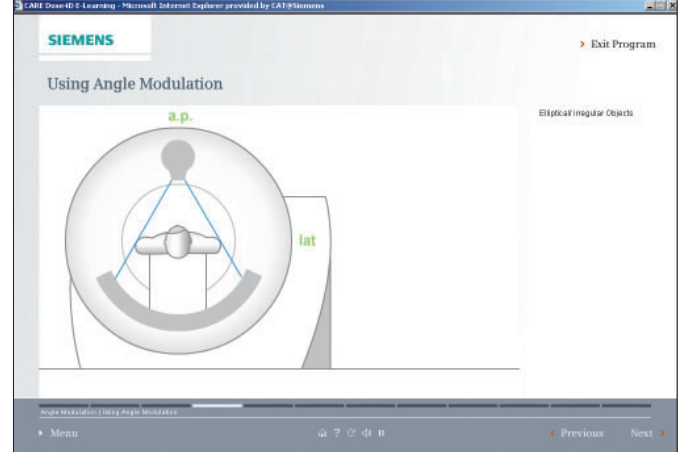


Financial

- Enable easy transfer of knowledge to bring new personnel up to speed.

“We received the CDs and they are just great. It’s like actually being there. Thank you for offering this service.”

Andreas Heinemann, Radiologische Gemeinschaftspraxis, Karlsruhe, Germany



e-Learning

Like no other training form, e-Learning provides single experience that accommodates all three distinct learning styles; auditory learners, visual learners, and kinesthetic learners. By utilizing these various learning styles, at least 70 % of the content should be remembered.

Siemens offers a variety of e-Learning courses, both clinical and product focused. Because the training is self-paced, you have complete control over your learning schedule. The training modules cover clinically oriented and product focused topics.

CARE Dose4D for Your SOMATOM CT Scanner:

CARE Dose4D™ and its real-time mA adjustment provide best image quality at the lowest possible dose. Every patient is different in terms of size, weight, and anatomy. CARE Dose4D was developed to provide fully automated, real-time, anatomy-based dose regulation. With this e-Learning, CT-users can easily acquire the know-how to utilize CARE Dose4D most efficiently.



Recording of 9th SOMATOM World Summit 2009:

This DVD is your invitation to experience the complete SOMATOM World Summit, 9th CT User Conference. Review a wide spectrum of presentations that help keep you updated on trendsetting developments in computed tomography, including applications in cardiovascular imaging, neurology, oncology, and acute care. Hear about the latest low dose imaging options and first clinical results of the SOMATOM Definition Flash.

These easy-to-use, self-paced e-Learning courses are available for you on the e-Learning campus: www.siemens.com/SOMATOMEducate (e-Learning)

Your Benefits:



Clinical

- State-of-the-art e-Learning produced in accordance to didactical aspects.



Workflow

- Workflow enhancements through better product knowledge.



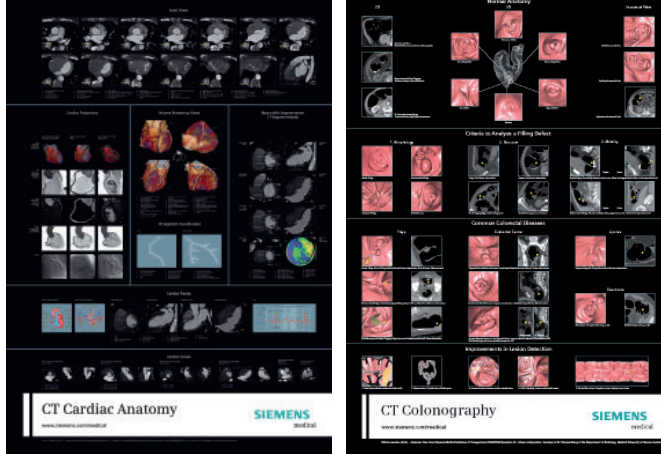
Caring Partner

- Gain additional knowledge through a learning process which is optimized to your personal preferences.



Financial

- Order e-Learning DVDs free of charge from our e-Learning campus.



Clinical Poster Gallery

Siemens Healthcare is pleased to provide you with a brilliant way to educate staff and patients about the human anatomy, as seen through a CT scanner. Perfect for the patient waiting room, the staff lounge, or the wall of the reading room, these posters show the wide range of views that are easily created from a CT examination. Key anatomy is clearly labelled.

To order a clinical poster, please go to:
www.siemens.com/ct-poster

CT Cardiac Anatomy

Based on axial MIP reconstructions, all anatomic structures of the heart are described. Graphics as well as VRT images explain the 15 segment classification of AHA (American Heart Association). Moreover, 17 segments of the left ventricle and their relation to the contributing coronaries are displayed.

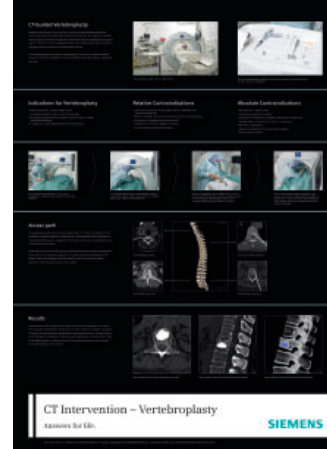
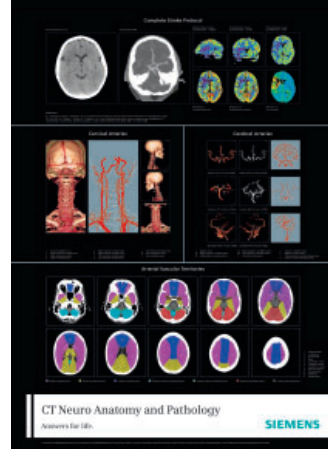
CT Colonography

In cooperation with our partners from the Medical University of Vienna, Austria, Siemens Healthcare has produced a poster demonstrating the spectrum of CTC findings in colon diseases. All diseases are briefly described and extensively illustrated in 3D and 2D CT images, guiding and assisting users in the reporting of findings in CTC examinations.



“Using the poster, where a complete workflow supported by excellent images is described, makes it much easier to explain the procedure to colleagues and patients.”

Dr. Ralf Hoffmann,
University of Munich,
Germany



CT Neuro Anatomy

Together with neuro experts from Münster University, Münster, Germany, Siemens Healthcare designed a poster focusing on anatomy and CT-specific landmarks relevant for CT angiographies of neck and head vessels. Information about a recommended stroke workflow is also explained.

CT Intervention – Vertebroplasty

In recent years, there has been a steady rise in the use of CT for biopsy and for image-guided, minimally-invasive therapies. Thanks to the excellent cooperation with the University of Munich, Germany, a new poster was created. The poster informs both physicians and patients about state-of-the-art interventional procedures in vertebroplasty, offering information regarding indications, contra-indications as well as access paths and results.

Your Benefits:



Clinical

- Complex anatomical structures are clearly explained.



Workflow

- Typical CT processing types like MPR, MIP, and VRT are visualized.



Caring Partner

- Educate staff and patients about state-of-the-art imaging techniques.



Financial

- Long-term value since content does not get outdated.

On account of certain regional limitations of sales rights and service availability, we cannot guarantee that all products included in this brochure are available through the Siemens sales organization worldwide. Availability and packaging may vary by country and are subject to change without prior notice. Some/All of the features and products described herein may not be available in the United States. The information in this document contains general technical descriptions of specifications and options as well as standard and optional features which do not always have to be present in individual cases.

Siemens reserves the right to modify the design, packaging, specifications, and options described herein without prior notice. Please contact your local Siemens sales representative for the most current information.

Note: Any technical data contained in this document may vary within defined tolerances. Original images always lose a certain amount of detail when reproduced.

The statements contained herein are based on the actual experience of Siemens customers. Siemens maintains data on file to support these claims. However, these statements do not suggest or constitute a warranty that all product experience will yield similar results. Results may vary, based on the particular circumstances of individual sites and users.

Please find fitting accessories:
www.siemens.com/medical-accessories

Global Business Unit

Siemens AG
Medical Solutions
Computed Tomography
Siemensstr. 1
DE-91301 Forchheim
Germany
Phone: +49 9191 18 0
Fax: +49 9191 18 9998

Global Siemens Headquarters

Siemens AG
Wittelsbacherplatz 2
80333 Muenchen
Germany

Global Siemens Healthcare Headquarters

Siemens AG
Healthcare Sector
Henkestr. 127
91052 Erlangen
Germany
Phone: +49 9131 84-0
www.siemens.com/healthcare

Legal Manufacturer

Siemens AG
Wittelsbacherplatz 2
DE-80333 Muenchen
Germany

www.siemens.com/healthcare