



**T-class.
Fast. Easy. Efficient.**

MAGNETOM. Powered by Tim.

Answers for life.

SIEMENS

T-class:

Fast.

Easy.

Efficient.

Every physician wants to deliver the best quality care possible. Yet increasingly, you are faced with the challenge to affordably reduce the time to diagnosis. T-class is the key to providing a higher level of clinical care while simultaneously reducing examination times.

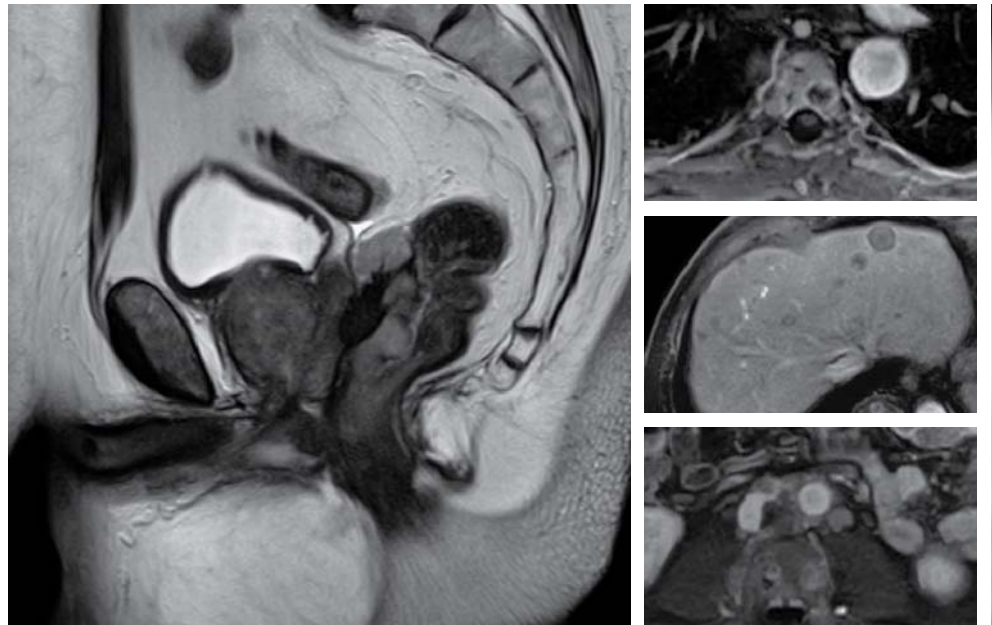
Powered by Tim™ (Total imaging matrix), T-class allows you to detect and diagnose diseases faster, offer more advanced applications, and increase workflow and efficiency. The next natural step in the Tim revolution. Opening the door to a completely new way to do MRI.

Break through
the barriers of
conventional MRI
with T-class.





SIEMENS



Trendsetting Applications.

With T-class, you can increase the quality of your examinations while reducing costs, providing a faster, more effective workflow. T-class provides the accuracy and speed that can reduce examination time and increase patient volume.

It features:

Tim Planning Suite

Examine different regions of the entire body in a minimum amount of time through measurement planning on a field of view (FoV) of any size. With Tim Planning Suite, the different segments are presented in one large image, further enhancing workflow efficiency. It also provides a dedicated user interface for better usability.

Inline Composing

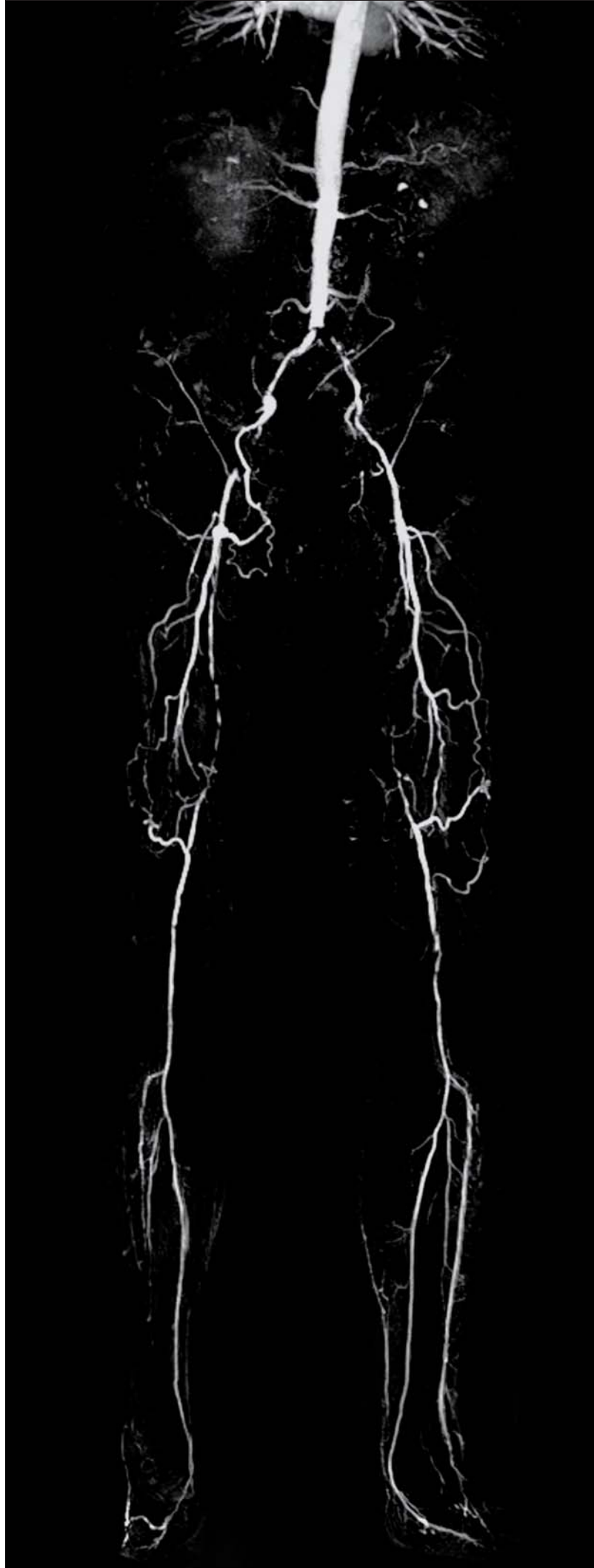
Eliminate postprocessing with automatic image composition directly after the measurement. Obtain, for example, the complete vasculature in MR angiography with just one resulting image, saving you time and helping to improve efficiency.

Inline Diffusion

Simplify your workflow with Inline Diffusion by enabling automatic, real-time calculation of trace-weighted images and ADC maps. In addition, *syngo*[®] REVEAL helps to distinguish malignant from benign lesions in the body, making body diffusion easier and faster.

syngo Image Filter

Filter images the way you want at the end of your scan with *syngo* Image Filter. Image filter has three levels that can be changed individually using the smoothing and edge-enhancement parameters. The images are filtered inline and will be displayed directly after the measurement.



Tim Whole-Body Suite

Envision whole-body imaging (up to 205 cm) with the highest image quality without patient repositioning and without the need to change coils. Whole-body MR angiography is possible with high speed, high resolution, and high image contrast in the entire volume, while combining high-speed gradients and iPAT.

syngo TimCT

Experience a new level of clinical possibilities. With MR as simple as CT, *syngo* TimCT provides the most homogeneous image quality and a smooth workflow. Image quality benefits from continuously scanning at the isocenter of the magnet. Seamless scanning of large FoVs removes boundary artifacts inherent to stepping techniques. With *syngo* TimCT, no time is lost for table moves between stations.



Moving MRI Forward. Literally.

T-class comes equipped with the innovative *syngo* TimCT, an application featuring continuous table move for CT-like scanning, which opens up a whole new world of clinical possibilities. Now, you can push clinical boundaries. Fast. Easy. Efficient.

syngo TimCT FastView

Acquire an overview of the whole body in one continuous table movement. *syngo* TimCT Fast View is an extremely fast localizer sequence that enables scanning at the isocenter while the table is moving. Your benefits include:

- Obtain axial, sagittal and coronal images (calculated inline), enabling whole-body coverage (up to 205 cm) in just 40 seconds
- Initiate FastView without any adjustments
- Allow low SAR acquisitions without compromising image quality
- Eliminate the need for laser light positioning with a preset, user-definable scan range that, for example, can cover the whole spine. FastView can actually help increase productivity by shortening patient setup time

syngo TimCT Angiography*

Experience the advantages of seamless, high-resolution peripheral run-offs in coronal or sagittal orientation. Your benefits include:

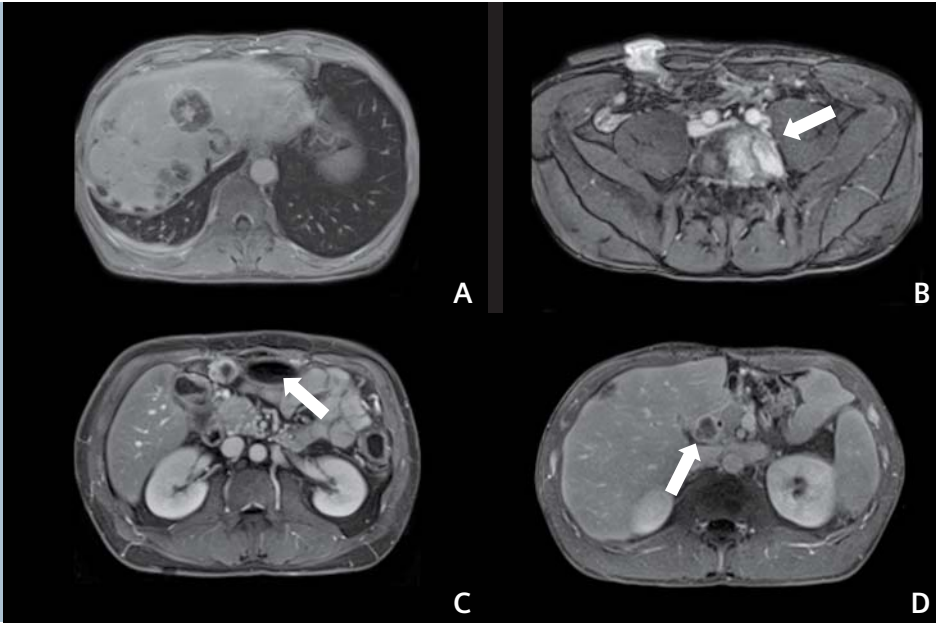
- A reduction in your planning steps by up to 50%
- The automation of your workflow with Inline Subtraction and Inline MIP
- A shortened scan time with continuous table move for faster bolus tracking
- Homogenous, high-resolution imaging without boundary artifacts

"*syngo* TimCT Angiography significantly reduces exam and reading times."

Dr. Harald Quick, University in Essen, Germany

"The fast whole-body capabilities of *syngo* TimCT Oncology allow us to diagnose and stage oncological diseases quickly and with more confidence."

Prof. Arnd-Oliver Schäfer, University in Freiburg, Germany



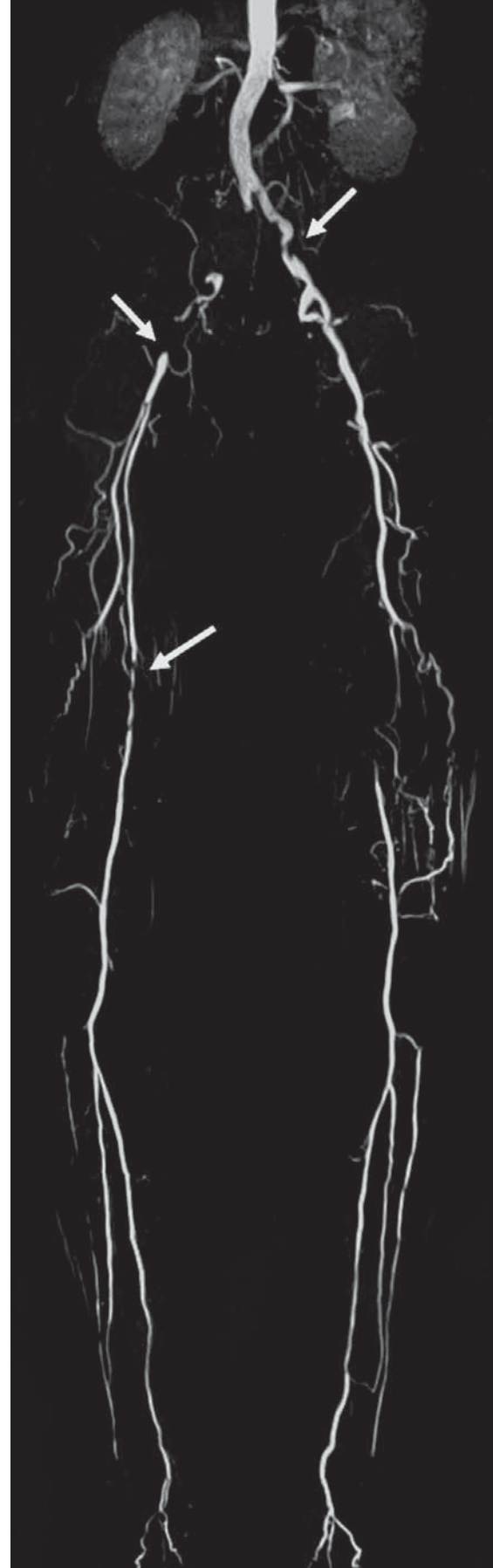
Axial *syngo* TimCT Oncology FLASH images clearly visualize hepatic metastases (A), a bone metastases in the 5th lumbar vertebra (B). Lymph node involvement in the transverse mesocolon (C) and the hepatoduodenal ligament (D).

syngo TimCT Oncology*

Increase your confidence in your diagnosis with the complete picture – local anatomy and complete screening and staging in one MR exam. There's no need to reschedule your patients to another modality. You can do it all right here. Your benefits include:

- Complete screening and staging at one imaging modality
- A reduction in your planning steps by up to 50%
- A shortened scan time with continuous table move
- Homogenous, high-resolution imaging without boundary artifacts

*optional features



syngo TimCT Angiography

Peripheral vasculature in a 63-year-old male patient with peripheral arterial occlusive disease (PAOD) (Rutherford grade II Category 4). Note multiple stenosis and occlusions (arrows), especially in the pelvic and upper leg region.

Acknowledgement:

University Hospital Großhadern, Munich, Germany
University Hospital Essen, Essen, Germany
University Hospital Freiburg, Freiburg, Germany

The information in this document contains general descriptions of the technical options available, which do not always have to be present in individual cases. The required features should therefore be specified in each individual case at the time of closing the contract.

Siemens reserves the right to modify the design and specifications contained herein without prior notice. Please contact your local Siemens Sales representative for the most current information.

syngo Evolve Package: In the event that upgrades require FDA approval, Siemens cannot predict whether or when the FDA will issue its approval. Therefore, if regulatory clearance is obtained and is applicable to this package, it will be made available according to the terms of this offer.

Note: Any technical data contained in this document may vary within defined tolerances. Original images always lose a certain amount of detail when reproduced.

The information in this document contains general technical descriptions of specifications and options as well as standard and optional features which do not always have to be present in individual cases.

Please find fitting accessories:
www.siemens.com/medical-accessories

Local Contact Information

In the USA

Siemens Medical Solutions USA, Inc.
51 Valley Stream Parkway
Malvern, PA 19355
Phone: +1 888-826-9702
Phone: +1 610-448-4500
Fax: +1 610-448-2254

In Japan

Siemens-Asahi
Medical Technologies Ltd.
Takanawa Park Tower 14F
20-14, Higashi-Gotanda 3-chome
Shinagawa-ku
Tokyo 141-8644
Phone: +81 3 5423 8411

In Asia

Siemens Medical Solutions
Asia Pacific Headquarters
The Siemens Center
60 MacPherson Road
Singapore 348615
Phone: +65 6490-6000
Fax: +65 6490-6001

Global Business Unit

Siemens AG
Medical Solutions
Magnetic Resonance
Henkestr. 127
DE-91052 Erlangen
Germany
Phone: +49 9131 84-0
www.siemens.com/healthcare

Global Siemens Headquarters

Siemens AG
Wittelsbacherplatz 2
80333 Muenchen
Germany

**Global Siemens
Healthcare Headquarters**

Siemens AG
Healthcare Sector
Henkestr. 127
91052 Erlangen
Germany
Phone: +49 9131 84-0
www.siemens.com/healthcare

Legal Manufacturer

Siemens AG
Wittelsbacherplatz 2
DE-80333 Muenchen
Germany

www.siemens.com/healthcare