



Ergonomic design packed
with powerful performance

MULTIMOBIL 5C

Answers for life.

SIEMENS

MULTIMOBIL 5C

Mobile C-arm image intensifier system with high frequency technology

Siemens has led the way in development of X-ray generators and mobile C-arms. Today MULTIMOBIL 5C takes that leadership to a new level in economy and performance with a wide range of applications, excellent image quality, low-dose operations, superb maneuverability and ease of use.

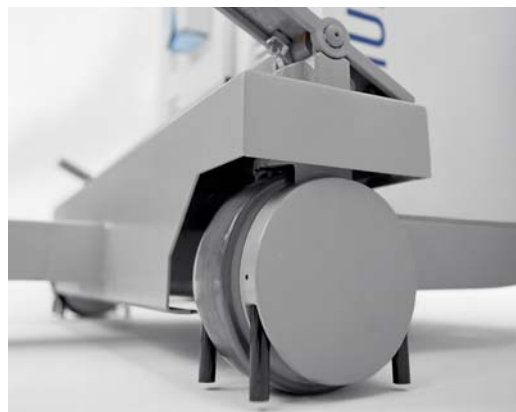
The mobile C-arm MULTIMOBIL 5C with its high-resolution image intensifier system, its single-tank high-frequency X-ray generator and digital control unit with image storage technique provides the optimum solution of today's clinical requirements.

MULTIMOBIL 5C is a mobile X-ray image intensifier system with multipurpose features. Its ergonomic design is ideally suited for the usage in the OR, radiological departments, emergency rooms, ICUs and the latest interventional techniques.

Due to its high physical adaptability and precise positioning, the counterbalanced C-arm with steering wheel mechanism provides superior maneuverability and maximised user comfort. The automatic dose regulation constantly adapts the X-ray radiation to the thickness and density of the irradiated body part.

The digital image memory provides storage for four fluoroscopy images. This simplifies the workflow while reducing radiation dose and total fluoroscopy time.

With an optional Export Interface MULTIMOBIL 5C supports the image transfer to an external frame grabber solution. All components such as image intensifier, generator, tube and digital memory are ideally matched for delivering consistent image quality.

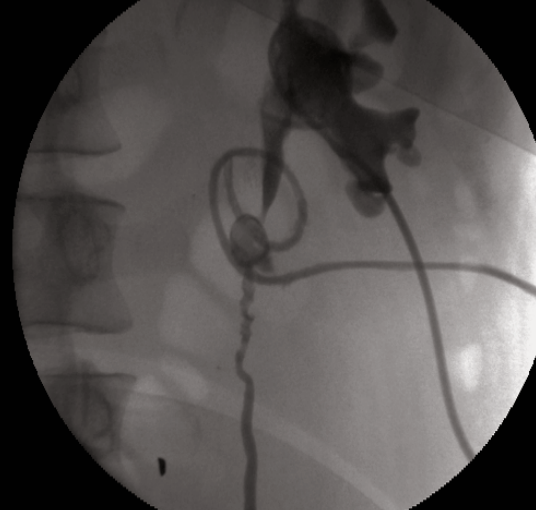


Technical data



C-arm	
Orbital movement	125° (-35° to +90°)
Angulation	±190°
Horizontal movement	20 cm (7.9")
Swivel range	±12.5°
Vertical Travel	40 cm (15.7")
Source – I.I. distance	86 cm (33.8")
Immersion depth	63.5 cm (25")
Lateral movement	steering handle
X-ray generator	
Type	2.5 kW/190-240 V; 1.6 kW/110 V
Radiographic parameters	
kV range	40 kV to 100 kV in 20 steps
mAs	0.32 mAs to 200 mAs in 29 steps
mA	13 mA to 63 mA/190-240 V; 10 mA to 40 mA/110V
Time	20 ms to 5 s/230 V; 20 ms to 8 s/110 V
Fluoroscopic parameters	
Fluoroscopy voltage	40 kV to 110 kV
mA range	anti-isowatt 0.5 mA to 5 mA contrast 0.5 mA to 7 mA
Fluoroscopy	ADR (Automatic Dose Regulation) and manual mode
X-ray tube unit	
Type	stationary anode dual focus
Focal spot sizes, minimal value	0.5/1.5 mm
Selection	automatic selection of focal spot for fluoroscopy and radiography
Thermal protection	auto cut-off of fluoroscopy and radiography in case of tube head temperature exceeding 60°C
Collimator system	motorized iris collimator for concentric collimation
X-ray image intensifier	
Nominal diameter	23 cm (9")
Field size	dual field 23 cm (9")/16 cm (6") selectable from the control panel circular grid placed at the input of the I.I.
Grid	Pb 8:1; 40 lp/cm, f ₀ 90
Cassette holder	
Format	auto centering 10" x 12" format





TV system

Type	CCD camera with high sensitivity and resolution
TV standard	CCIR 625 lines at 50 Hz
Matrix size of CCD camera	752 (H) x 582 (V) for 50 Hz effective pixel
Image rotation	endless clockwise and anti clockwise
Image reversal	left/right and top/bottom
Displays	2 x 15" black and white TFT displays for live image and Last Image Hold (LIH) high brightness, high resolution with independent brightness and contrast control
Digital image storage capacity	standard four frame image memory in addition to LIH

Power Supply

Power requirement	maximum 3.5 kVA
Main voltage	single phase 110V AC \pm 10%, 50 Hz and 60 Hz at line resistance of 0.36 ohms single phase 190V - 240V AC \pm 10%, 50 Hz and 60 Hz at line resistance of 1.5 ohms

Accessories

Sterile cover and clips	for C-arm, X-ray tube and I.I.
Cassette holder	standard
Interface to external recording device	optional
Thermal printer	optional

Environment conditions (operating)

Temperature range	+10°C to +40°C
Relative humidity	30% to 75%
Barometric pressure	700hPa to 1060hPa



Special features:

- Efficiency through high frequency technology
- Ultra compact image intensifier with CCD camera
- Excellent spatial resolution with 0.5 and 1.5 focal spots
- Two high-brightness TFT displays
- Four image storage and Last Image Hold (LIH)
- Image rotation for visualisation of images irrespective of organ position
- Thermal protection

MULTIMOBIL 5C – designed for multipurpose use in different applications such as orthopedics, traumatology, urology and cardiology.



MULTIMOBIL 5C is not commercially available in the United States (USA) and in the European Economy Area.

The information in this document contains general descriptions of the technical options available and may not always apply in individual cases.

The required features should therefore be specified in each individual case at completion of contract. Siemens reserves the right to modify the design and specifications contained herein without prior notice. Please contact your local Siemens sales representative for the most current information.

Original images always lose a certain amount of detail when reproduced.

In the interest of complying with legal requirements concerning the environmental compatibility of our products (protection of natural resources, waste conservation), we recycle certain components. Using the same extensive quality assurance measures as for new components, we guarantee the quality of these recycled components.

Please find fitting accessories:
www.siemens.com/medical-accessories

Global Business Unit

Siemens AG
Medical Solutions
X-Ray Products
Henkestr. 127
91052 Erlangen
Germany
Phone: +49 9131 84-0

Global Siemens Headquarters

Siemens AG
Wittelsbacherplatz 2
80333 Muenchen
Germany

Global Siemens Healthcare Headquarters

Siemens AG
Healthcare Sector
Henkestr. 127
91052 Erlangen
Germany
Phone: +49 9131 84-0
www.siemens.com/healthcare

Legal Manufacturer

Siemens Ltd
L6, Verna Industrial Estate
Verna Salcete Goa
403722 India

www.siemens.com/healthcare