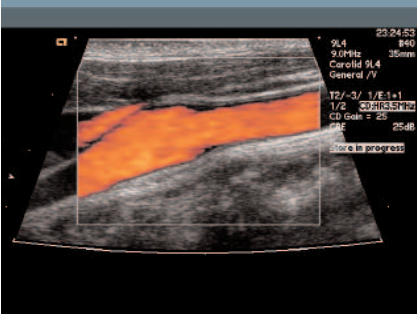


# Vascular Imaging

## REAL SOLUTIONS

Understanding challenges  
Providing answers  
Improving outcomes



From abdominal and peripheral vascular to transcranial Doppler, the ACUSON Sequoia™ ultrasound system easily meets the clinical challenges of vascular imaging. The new 9L4 transducer provides a single transducer solution for vascular imaging with unprecedented contrast and spatial resolution. DICOM structured reporting and the Advanced Vascular Analysis reporting package support comprehensive measurement and reporting capabilities across all vascular applications. Smart, streamlined, and easy to use, the Sequoia system provides a comprehensive vascular solution.

### Highlights

**Advanced SieClear™ spatial compounding:**

Utilizes multiple lines of sight for optimal contrast resolution, speckle reduction and border detection.

**Clarify™ vascular enhancement technology:**

Improves B-mode imaging by reducing noise and artifacts within vessels, affording clearer wall and vessel-lumen definition.

**Virtual Format:**

Utilizes a Vector™ wide-view imaging format for extended field of view in visualizing vascular anatomy.

**Triplex imaging:**

Provides simultaneous B-mode, color Doppler and pulsed wave Doppler imaging for enhanced workflow.

**TEQ™ ultrasound technology for spectral Doppler:**

Enables single-button, instantaneous optimization for consistent, reproducible spectral-Doppler imaging and streamlined, strain-free operation.

**Auto Doppler:**

Provides automatic tracing of the spectral Doppler envelope with calculation of indices for consistency and efficient transfer to report package.

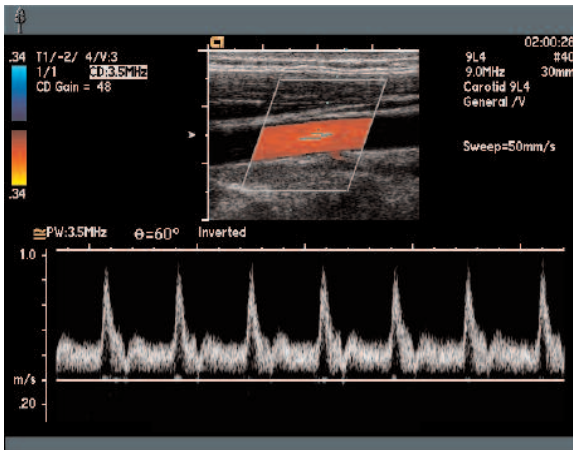
**Advanced Vascular Analysis:**

Provides comprehensive measurement and reporting capabilities across venous and arterial vascular applications.

**ACUSON Sequoia ultrasound system**  
Powerful clinical applications at your fingertips

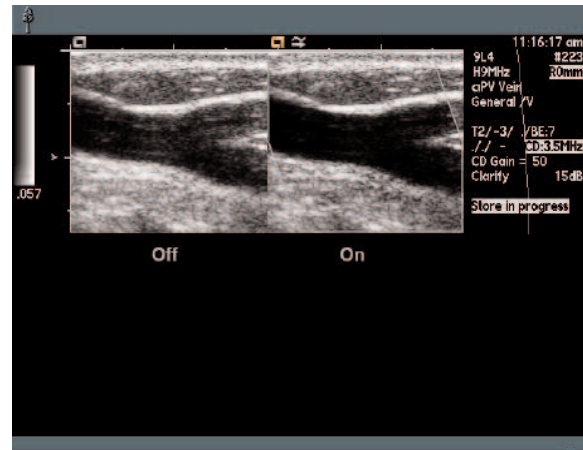
[www.siemens.com/medical](http://www.siemens.com/medical)

**SIEMENS**  
medical



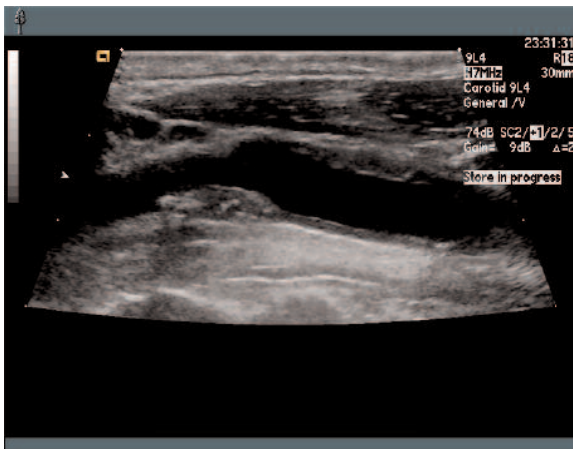
### 9L4 Transducer

- A single transducer solution for vascular imaging. Excellent duplex image quality is shown in this image of the common carotid artery.



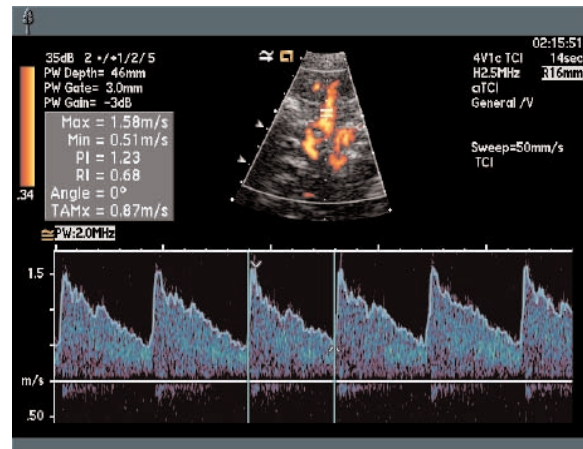
### Clarify VE Technology

- Eliminates noise and artifacts from the lumen of this Basilic Vein.



### Advanced SieClear compounding

- Provides the excellent detail and contrast resolution demonstrated in complicated carotid plaque. Virtual format imaging is used to provide a larger field of view.



### Transcranial imaging

- Uses the 4V1c transducer and Auto Doppler for automatic tracking and calculations of the Doppler signal.

### Headquarters

Siemens Medical Solutions USA, Inc.  
 51 Valley Stream Parkway  
 Malvern, PA 19355-1406 USA  
 Telephone: +1-888-826-9702  
[www.usa.siemens.com/medical](http://www.usa.siemens.com/medical)

Europe: +49 9131 84-0  
 Asia Pacific: +65 6341 0990  
 Latin America: +1-786-845-0697

### USA

Siemens Medical Solutions USA, Inc.  
 Ultrasound Division  
 1230 Shorebird Way  
 P.O. Box 7393  
 Mountain View, CA 94039-7393 USA  
 Telephone: +1-888-826-9702