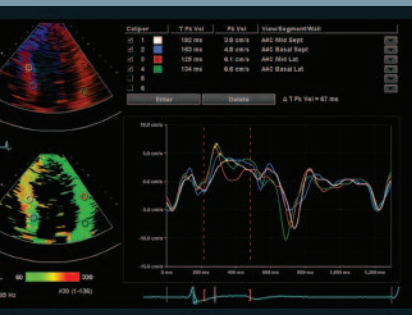


Tissue Doppler Synchrony Mapping

REAL SOLUTIONS

Understanding challenges
Providing answers
Improving outcomes



With its fast, visual mapping of myocardial timing mechanics, *syngo*[®] Quantitative Synch Tool (QST) technology provides effective ventricular synchrony assessment at the point of care. Quick visual assessment, time to peak calculations and in-depth strain analysis enable accurate identification of cardiac timing issues when dyssynchrony is suspected. In fact, *syngo* QST can be used to effectively monitor and assess heart failure patients through the continuum of care from diagnosis, through treatment and follow-up.

Highlights

Convenient

- Enables quick visual assessment through detailed analysis of ventricular synchrony
- Provides access to all calculations and study data at the echocardiography system or off the system on a PC
- Available on select ACUSON[™] ultrasound systems or with *syngo*[®] US Workplace

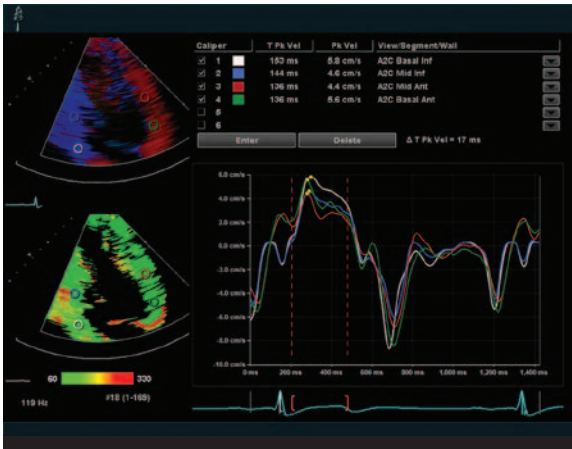
Empowering

- Provides effective screening assessment for patient management decisions using high frame rate harmonic Doppler tissue velocity
- Highlights dyssynchronous wall movement with a Red/Green synchronization display
- Enables time-to-peak, velocity, strain, strain rate and displacement calculations for detailed analysis when dyssynchrony is suspected
- Provides functional assessment information in both parametric and curve displays

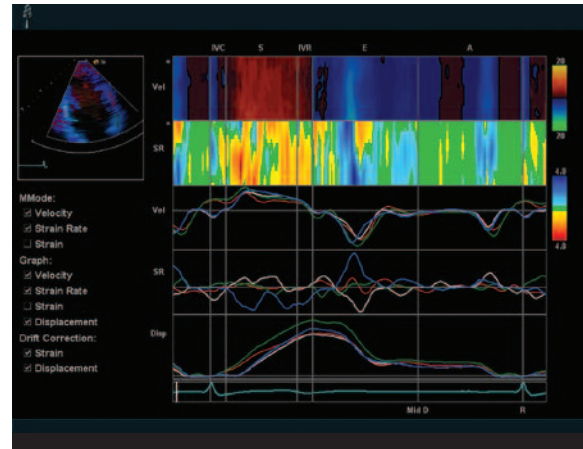
Intuitive Operation

- Streamlines procedures with an efficient, easy to use interface
- Automatically calculates time markers based on age and sex for a more complete picture of related timing events
- Enables editing of auto-time markers based on specific hemodynamic data

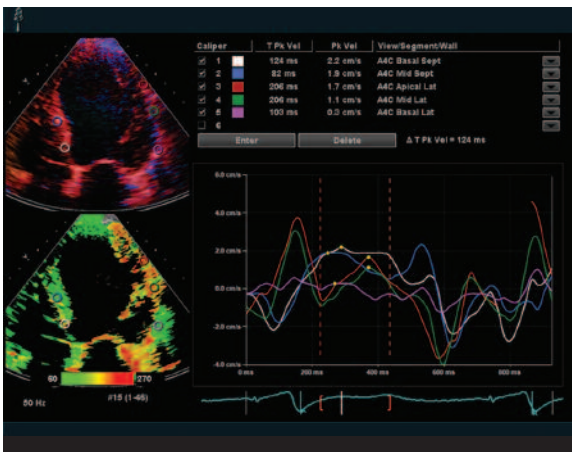
syngo Quantitative Synch Tool
Color-coded clarity. Visual assessment.



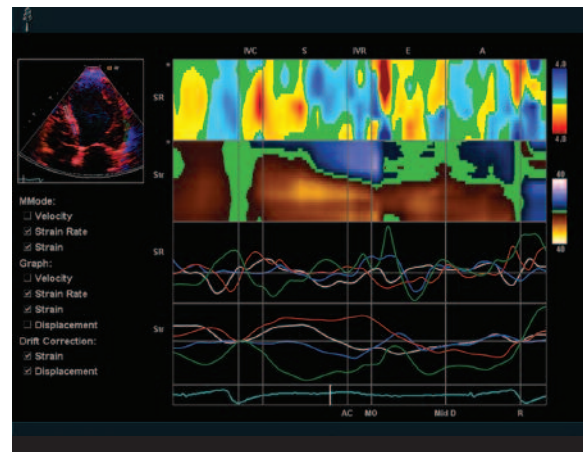
- Apical two chamber view with multiple regions of interest (ROI) in opposing wall segments.



- Parametric velocity and strain rate display with associated quantitative graphic analysis.



- (A) Abnormal opposing wall segments are recognizable and display graphic disorder of the apical lateral wall.



- (B) Strain and strain rate graphics displaying detailed analysis of the user-defined ROIs in the same patient study.

ACUSON is a trademark of Siemens Medical Solutions USA, Inc., and syngo is a trademark of Siemens AG.

© 05.2007, Siemens Medical Solutions USA, Inc.
Order No. A91US-71-1C-4A00
Printed in the USA
WS 0507 10.0

Headquarters

Siemens Medical Solutions USA, Inc.
51 Valley Stream Parkway
Malvern, PA 19355-1406 USA
Telephone: +1-888-826-9702
www.usa.siemens.com/medical

Europe: +49 9131 84-0
Asia Pacific: +65 6341 0990
Latin America: +1-786-845-0697

USA

Siemens Medical Solutions USA, Inc.
Ultrasound Division
1230 Shorebird Way
P.O. Box 7393
Mountain View, CA 94039-7393 USA
Telephone: +1-888-826-9702