

Integrated diagnostic solutions at BSAVA Congress

Siemens showcases continuum of diagnostics for veterinary practitioners

Siemens will be showcasing its range of solutions for veterinary applications on stand number 709 at the British Small Animal Veterinary Association (BSAVA) Congress in Birmingham, 2-5 April 2009.

Siemens offers a range of technology for veterinary care, from advanced ultrasound, CT and MRI systems to haematological and immunological diagnostics.

Imaging technology is well established in hospitals around the UK as a way of looking inside the body for changes or anomalies to assist with diagnosis. MRI and CT are starting to see its influence gain in veterinary environments. For example, MRI provides a reliable veterinary imaging method when traditional procedures such as X-ray and ultrasound are not able to convey the detail needed. They display small changes in bone and soft tissue and can be complemented with special adjustments such as mini coils for dog and cat paws to make them suitable for application with animals. This allows veterinarians to diagnose more accurately and treat specific complaints. The images produced by MRI systems can be used for tumour diagnosis, nervous complaints or orthopaedic problems as well as intestinal, respiratory or cardiovascular disorders.

“With an estimated 14 million cats and dogs in UK households, it’s clear to see that keeping a pet is very popular,” states Julie Shepherd, MR Product Manager at Siemens Healthcare. “Owners see their pets as family members and want the best possible care for them if they fall ill. The animal of course cannot describe its symptoms, so an MR scan can replace other tests as a first line investigative tool.

The expense of such a test is justified as this can lead to faster diagnosis and early application of the most appropriate treatment.”

Siemens will also be presenting its in vitro range of solutions and assays in chemistry, haematology and immunology, all vital tools for tackling illness in small animals.

This will include the IMMULITE® range, an advanced blood testing platform with an unrivalled immunoassay portfolio, allowing the rapid diagnosis of a broad spectrum of small animal conditions. Information on the ADVIA® 2120i Haematology System with specific animal software and Dimension® Xpand® Plus integrated chemistry and immunoassay system will also be available.

“Siemens offers a range of quantitative tests and instruments, including veterinary specific applications, to assist in the diagnosis, monitoring and management of conditions,” said Trevor McCarthy, Private and Vet National Business Manager at Siemens Healthcare Diagnostics. “This includes blood, hormone and protein testing that deliver an insight to what is going on deep inside the animal’s body and will assist in identifying the correct clinical diagnosis and course of treatment. Due to workload restrictions, veterinary practices often have to send assays to external sites for testing. Using Siemens analysers can help to keep them in house, providing a much faster turn around time and significant cost savings. This enables effective and timely remedies for many clinical conditions.”

Product literature and in-depth discussions with Siemens specialists will be available from the stand during the event.

- ends -

About Siemens Healthcare

The **Siemens Healthcare Sector** is one of the world’s largest suppliers to the healthcare industry. The company is a renowned medical solutions provider with core competence and innovative strength in diagnostic and therapeutic technologies as well as in knowledge engineering, including information technology and system integration. With its laboratory diagnostics acquisitions, Siemens Healthcare is the first integrated healthcare company, bringing together imaging and lab diagnostics, therapy and healthcare information technology solutions, supplemented by consulting and support services. Siemens Healthcare delivers solutions across the entire continuum of care – from prevention and early detection, to diagnosis, therapy and care. Additionally, Siemens Healthcare is the global market leader in innovative hearing instruments. The company employs more than 49,000 people worldwide and operates in 130 countries. In the fiscal year 2008 (Sept. 30), Siemens Healthcare reported sales of €11.2 billion, orders of €11.8 billion, and Sector profit of €1.2 billion. Further information can be found by visiting <http://www.siemens.co.uk/healthcare>.

Approximately 505 words

13 March 2009

For more information or images please contact:

Georgina Wright / Dorothy Chandler

Media Safari

T: 01225 731388

E: georginaw@mediasafari.co.uk / dorothyc@mediasafari.co.uk

Siemens Healthcare

Kerry Milton

T: 01276 696338

E: kerry.milton@siemens.com

W: <http://www.siemens.co.uk/healthcare>

Picture caption:

A dog is examined for a slipped disc on a Siemens MAGNETOM® Symphony MRI system.

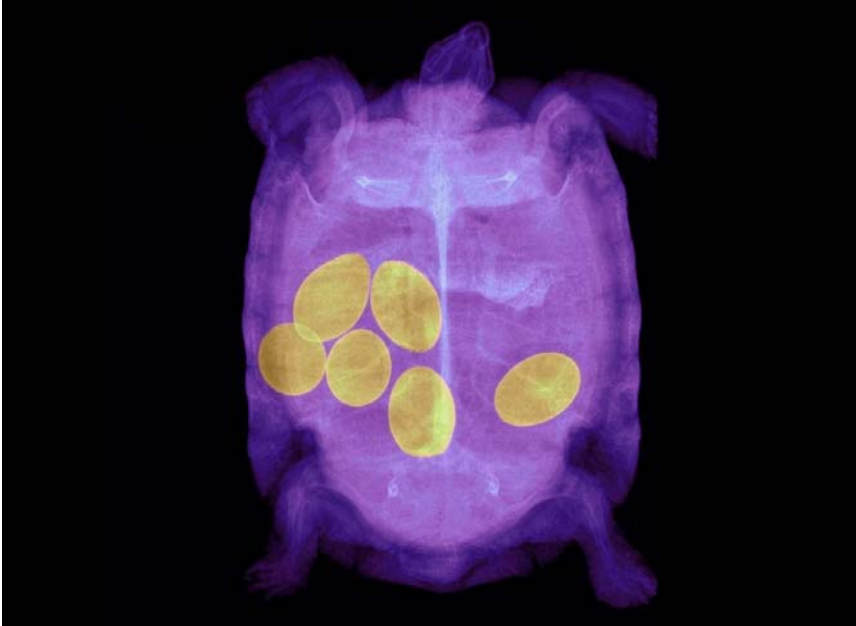


Picture caption:

CT scanners produce highly detailed images, allowing the vet to diagnose at the monitor.



Picture caption: High quality images show greater detail in the body, including the hidden eggs in this tortoise.



Picture caption: Vets can operate immediately after a scan to hasten the healing process.

