

The Portland Hospital selects Avanto for paediatric procedures

Quick, quiet, feet-first scanner installed at leading women and children's hospital

Young patients at The Portland Hospital in London, part of the HCA group, will now undergo less stressful MRI examinations due to the installation of a MAGNETOM® Avanto from Siemens Healthcare. The system is used for a range of imaging procedures from brain to spine to small bowel.

The MAGNETOM Avanto is a 1.5 Tesla MRI that combines fast image acquisition with a dramatic reduction in acoustic noise without compromising gradient performance. Combining special casting for gradient coils, special magnet suspension and unique MR sequence design, noise is reduced by up to 97%. The system also features Siemens' Tim® (Total imaging matrix) technology designed to increase flexibility, accuracy and speed to make every aspect of workflow more efficient and productive.

The system features ultra lightweight coils which make for a significantly more comfortable examination and are ideal for cardiac, oncology or paediatric patients. The Avanto also has an inviting design with a low table position of 47cm and this enables feet first examinations for nearly all procedures, making it suitable for the young anxious patients who undergo MRI scans at the hospital.

"The installation of the Avanto means we can now do much more and it is being used across the board for a range of imaging examinations," said Prina Shah, Superintendent Radiographer at The Portland Hospital. "It didn't take long for staff to get up to speed with the system and we're very pleased with the level of image quality it produces."

“The MAGNETOM Avanto combines reduced noise and lightweight coils with an accessible design,” said Malcolm Pickering, Regional Sales Manager at Siemens Healthcare. “With the added advantage of our Tim technology, the hospital can now offer greater flexibility, accuracy and speed in its scans.”

- ends -

About Siemens Healthcare

The **Siemens Healthcare Sector** is one of the world’s largest suppliers to the healthcare industry. The company is a renowned medical solutions provider with core competence and innovative strength in diagnostic and therapeutic technologies as well as in knowledge engineering, including information technology and system integration. With its laboratory diagnostics acquisitions, Siemens Healthcare is the first integrated healthcare company, bringing together imaging and lab diagnostics, therapy and healthcare information technology solutions, supplemented by consulting and support services. Siemens Healthcare delivers solutions across the entire continuum of care – from prevention and early detection, to diagnosis, therapy and care. Additionally, Siemens Healthcare is the global market leader in innovative hearing instruments. The company employs more than 49,000 people worldwide and operates in 130 countries. In the fiscal year 2008 (Sept. 30), Siemens Healthcare reported sales of €11.2 billion, orders of €11.8 billion, and Sector profit of €1.2 billion. Further information can be found by visiting <http://www.siemens.co.uk/healthcare>.

About The Portland Hospital for Women and Children

The Portland Hospital for Women and Children is London’s only private hospital entirely dedicated to the care of Women and Children, having been part of the HCA group for over twenty five years. The Portland Hospital works with over 500 world renowned Consultants and leading clinicians, upholding the highest standards of care for all its patients, providing a seamless patient journey from initial referral. The Portland Hospital provides leading clinical care throughout each of its patient sectors: Maternity, Paediatrics and Women’s Health, offering a broad range of services spanning from simplistic to highly complex diagnosis, procedures and treatments. As a centre of clinical excellence, The Portland Hospital is proud to be at the forefront of advancements in medical technology and is delighted that the latest addition to its MRI diagnostic equipment can be used across its three patient sectors.

18 June 2009

Approximately 305 words

For more information or images please contact:

Georgina Wright / Dorothy Chandler

Media Safari

T: 01225 731388

E: georginaw@mediasafari.co.uk / dorothyc@mediasafari.co.uk

Siemens Healthcare

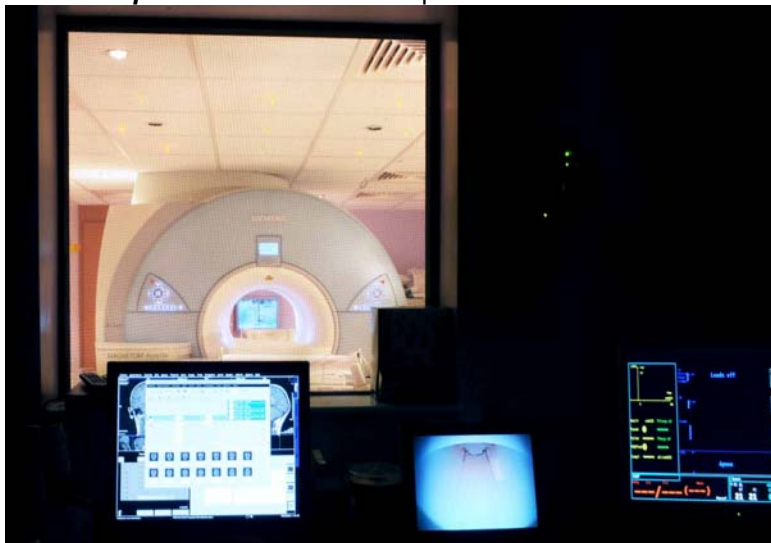
Kerry Milton

T: 01276 696338

E: kerry.milton@siemens.com

W: <http://www.siemens.co.uk/healthcare>

Picture caption: The Portland Hospital has installed a MAGNETOM Avanto from Siemens Healthcare.



Picture caption: The MAGNETOM Avanto combines fast image acquisition with a dramatic reduction in acoustic noise.

