

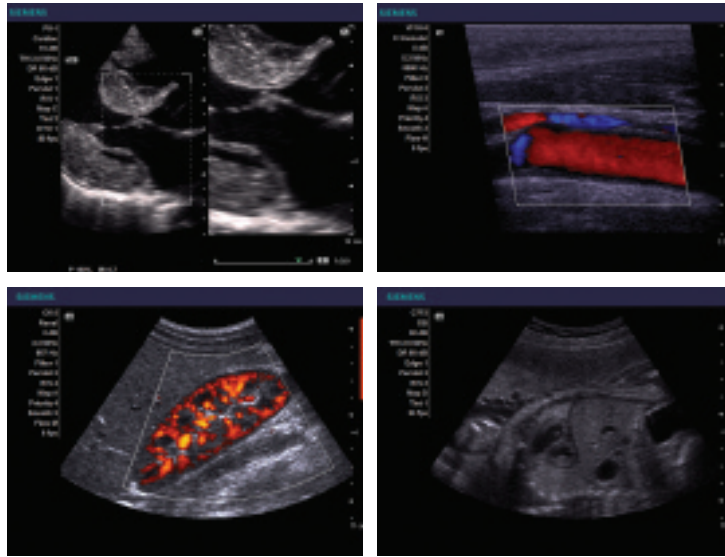
How do we define maximum
diagnostic versatility?

A man and a woman in white lab coats are looking at a Siemens ultrasound monitor. The woman is smiling and looking at the man. The monitor is a Siemens ACUSON X300 ultrasound system, premium edition. The background is a clinical setting with teal vertical bars.

Compact. Efficient.
Uncompromised performance.
ACUSON X300 ultrasound system, premium edition

Answers for life.

SIEMENS



- ▶ Cardiac Imaging: parasternal long axis with Split/Zoom – systolic anterior motion of mitral valve
- ▶ Vascular Imaging: common carotid artery – color Doppler
- ▶ Abdominal Imaging: power Doppler longitudinal view of renal vasculature
- ▶ Obstetrical Imaging: fetal chest and abdomen

Advanced Technology

The ACUSON X300 PE provides advanced technology to suit your clinical needs.

The performance you expect from Siemens – in a compact, efficient, ergonomic package.

The extensive needs found in today's clinical settings require a robust, yet flexible imaging system. The ACUSON X300™ ultrasound system, premium edition (PE) is just that. Highly mobile and compact, with state-of-the-art ergonomics, the ACUSON X300 PE was designed to deliver the diagnostic confidence for your clinic needs – wherever and whenever you need it next. The system's mobility and rapid 12 second reboot capability provide instant access when fully-featured diagnostic capabilities are needed.

In addition, The ACUSON X300 PE is a completely shared service system that supports a variety of applications and exam types. It provides a broad range of solutions from comprehensive cardiology, general imaging, and OB/GYN applications including Advanced 4D volumetric imaging. Its expanded capabilities and hardware design, combined with its flexibility, enable the ACUSON X300 PE to provide uncompromised diagnostic performance for years to come.

Superior Clinical Performance

- ▶ The ACUSON X300 PE ultrasound system delivers a new level of performance and diagnostic accuracy through a comprehensive array of advanced clinical technologies. These include high quality 4D imaging using the Advanced *fourSight*™ technologies for OB and GYN applications along with *syngo*® *fourSight*™ TEE View and *syngo*® Mitral Valve Assessment for detailed cardiac analysis.

Streamlined Clinical Workflow

- ▶ Siemens is dedicated to giving you the streamlined workflow and clinical efficiency you need, through the DIMAQ-IP workstation and DICOM structured reporting to the ACUSON X300 PE's home-based design, engineered for ease-of-use.

Advanced ErgoDynamic™ Imaging System Design

- ▶ The ACUSON X300 PE provides an optimal ergonomic solution. From the height adjustable control panel to the articulating flat panel display, the ACUSON X300 PE was designed for operator comfort and mobility.





Sophisticated imaging technologies enhance clinical performance across applications

A suite of advanced transducer technologies enable improved image uniformity when scanning technically difficult-to-image patients. Excellent image quality, with penetration as deep as 30 cm, is achieved without excessive transducer pressure.

The image quality you need for confident diagnosis.

The all-digital ACUSON X300 PE is engineered to provide the excellent clinical performance needed for confident diagnosis. The ACUSON X300 PE brings the benefits of Siemens' advanced core imaging technologies and advanced quantification capabilities to provide comprehensive imaging solutions for general imaging, OB/GYN and cardiovascular applications in a surprisingly compact, easy-to-use package. The ACUSON X300 PE was created to provide a new standard in the world of mobile ultrasound systems.



P5-1 Single Crystal Technology

- ▶ The single crystal piezoelectric design provides broad bandwidth, increased image quality and a single probe solution for adult cardiology.



TGO Tissue Grayscale Optimization Technology

- ▶ Single-keystroke TGO™ tissue grayscale optimization technology delivers more consistent image quality with a single push of a button.

Efficient Connectivity

The DIMAQ-IP integrated workstation and a comprehensive suite of DICOM features enable fast, easy access to patient information throughout the hospital system.

Get it done. Get it right. Get it now.

The ACUSON X300 PE is designed to achieve optimal clinical efficiency. From a customizable patient entry screen to DICOM structured reporting and customizable calculations by application, the platform is engineered to address each clinic's unique workflow needs. The increased capacity and easy navigation of the DIMAQ-IP integrated ultrasound workstation allows you to store, recall and manage patient data with speed and efficiency. Thumbnail image display provides easy access to stored images for review and printing.



- ▶ Excellent detail and contrast resolution is seen in the fetal cerebellum using SieClear™ multi-view spatial compounding.



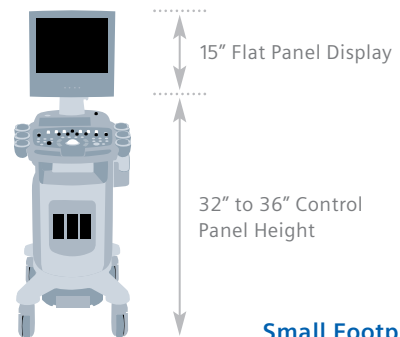
Ergonomic Flat Panel Display

The 15" (38.1 cm) flat panel display and articulated arm allow for optimal monitor placement and image quality in all scanning environments.

ErgoDynamic Imaging System Design: Taking the pain and pressure out of scanning.

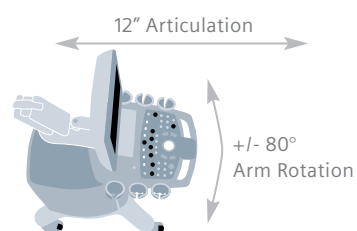
The ACUSON X300 PE is designed with the latest ergonomic innovations. With a lightweight compact footprint, the system is easy to move and store. The operator-friendly console is centered around a home-base design to reduce arm and hand movement, while the height-adjustable control panel and articulating arm allow for comfort in a variety of scanning situations.

Small, lightweight transducers complete the ergonomic package with advanced features such as Hanafy lens and single crystal transducer technology, which provide excellent penetration with reduced scanning pressure.



Small Footprint

- ▶ The lightweight, compact ACUSON X300 system design makes it easy to move from room to room, and convenient to store. This enhanced operational flexibility lets one machine do the work of many – and helps reduce operator injuries.



Customer Care. Life.

Our goal is your success –
over the entire life cycle.

Performance, productivity, patient satisfaction:
You want to get the best results from your
investment. With the Life customer care program,
we not only take care of your systems, but help
keep your know-how – and that of your practice –
up to date. So you can focus on something
even more important – your patients.

Delivering Peak Performance

Siemens Remote Service provides expert level
support at the touch of a button – anywhere,
anytime. Powered by remote desktop sharing,
the technical experts at our state-of-the-art
support center can seamlessly and securely
connect to your system to provide advice, remote
diagnostics, repair, and software updates
directly to your Siemens ultrasound system.

Maximizing your Investment

Siemens' legendary upgradeability consistently
delivers long-term value with continuous,
cost-effective upgrades and updates —
innovations that enable your investment to grow
with your practice, meeting today's clinical needs
and tomorrow's medical challenges.



Standalone clinical images may have been cropped to better visualize pathology.

ACUSON, ErgoDynamic, *fourSight*, SieClear, TGO, and X300 are trademarks of Siemens Medical Solutions USA, Inc. and *syngo* is a trademark of Siemens AG.

© 07.2008, Siemens Medical Solutions USA, Inc.
Order No. A91-US-95-1C-4A00
Printed in the USA
WS 0708 15.0

Contacts

Europe: +49 9131 84-0
Asia Pacific: +65 6341-0990
Latin America: +1-786-845-0697

USA

Siemens Medical Solutions USA, Inc.
Ultrasound Business Unit
1230 Shorebird Way
P.O. Box 7393
Mountain View, CA 94039-7393 USA
Telephone: +1-888-826-9702

Headquarters

Siemens Medical Solutions USA, Inc.
51 Valley Stream Parkway
Malvern, PA 19355-1406 USA
Telephone: +1-888-826-9702
www.usa.siemens.com/healthcare