



Energy Monitoring & Controlling (EMC)

Security

Safety and reliability

The application and database servers required for EMC are located in a Siemens data center. The server farm is operated in a so-called "demilitarized zone" (DMZ), meaning that the application is protected by firewalls against the internet as well as against the Siemens intranet.

The application and data are hosted on separate servers. The database server is not accessible from the internet but only via the EMC application, which is located on the application server.

Secure communication with the EMC application server is guaranteed by a state-of-the-art encrypted connection (128-bit SSL).

| Login

Welcome to EMC

EMC is a web based solution for efficient, cost-effective energy management.

Login

User name

Password

[-> Forgot password](#)

Energy Management made Simple and Secure

Access security

Siemens takes all the necessary precautionary measures to ensure that your EMC transactions are as secure as possible. Access is granted via an individual user account comprising of a user name and password (passwords are stored in an encrypted form). The account is disabled after 5 login attempts with an incorrect password.

- URL
https://eadvantage.siemens.com
- User name
This is the identification that allows you to access EMC.
- Password
A secret security element (minimum of 6 characters) which only you know. Choose a password which is easy to remember but avoid private phone numbers, birth dates etc. Also, never write your password down. Changing your password regularly also helps.

Data backup

Siemens guarantees robot-based data backup with state-of-the-art storage technology.

Backup intervals:

- Daily differential data backup
- Weekly full backup

Retention period:

- All server data is stored for a period of 4 weeks.

Digital certificates

Digital Certificates are an alternative to traditional forms of identification. A digital certificate is like an electronic ID card that is allocated to a specific organization to confirm identity.

Check the authenticity of the certificate as follows:

- Double click the lock icon, and then the "Details" menu item.

The details are as follows:

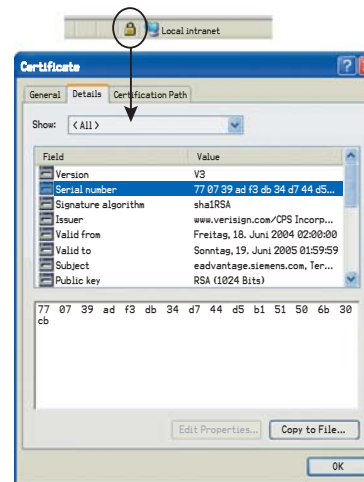
- Issued for: eadvantage.siemens.com
- Issued by: versign.com
- Validity: renewed annually
- Fingerprint: 77 07 39 ad f3 db 34 d7 44 d5 b1 51 50 6b 30 cb

Server farm – features

- Data transfers between your PC/browser and EMC are protected with a 128-bit SSL. This is a widely-used form of encryption technology. This same technology is used by banks offering secure eBanking.
- 8 Mbit/s bandwidth to the Internet (Siemens itself is the Internet Provider)
- 155 Mbit/s backbone
- Encryption for data transmission between the application server and the user
- UPS (uninterruptible power supply) with 100 minutes guaranteed emergency power supply
- 24/7 supervision of operations (building/rooms, hardware/servers, software/applications)
- Strictly limited and protected access
- Optimal operating conditions are guaranteed
 - air conditioning
 - fire alarm system
 - water and fire (F90) proofed

Termination of contract – data ownership

Upon termination of contract, all meter data and uploaded documents will be returned to the customer at a cost agreed upon in the Service Agreement.



Digital certificate