



Women's Health

Streamlined solution with the new 4-channel
BI Breast coil for biopsy and imaging

www.siemens.com/healthcare

SIEMENS

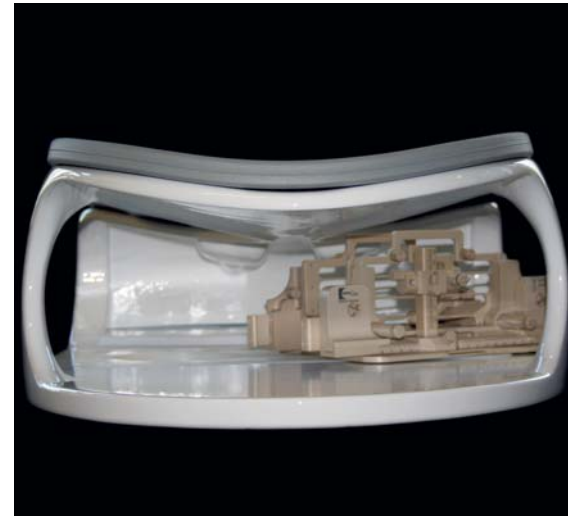
MAGNETOM Applications • MAC Print

MR Breast

Streamlined solution from imaging to biopsy



4-channel BI Breast coil for basic imaging



4-channel BI Breast coil with biopsy insert for cranio-caudal access

Breast cancer is worldwide the most commonly diagnosed cancer among women. The National Cancer Institute estimates that a woman in the United States has a 1 in 8 chance of developing invasive breast cancer during her lifetime. Breast Imaging with MRI has become a powerful application over the last years, with an increase in examinations of 40% per annum.

In March 2007, the American Cancer Society (ACS) published new screening guidelines. Due to these new guidelines, it is estimated that an additional large percentage of women can benefit from breast MRI, especially those of certain high-risk groups.

Not only breast imaging is essential for diagnosis, but also the ability to perform MR-guided interventional procedures. The new 4-channel BI (Biopsy, Imaging) Breast coil offers both. It has biopsy capabilities and also allows basic breast imaging.

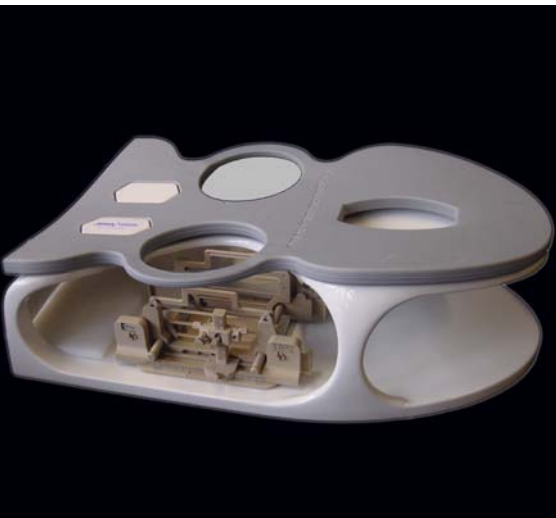
It provides maximum patient comfort and biopsy access, even for larger patients. The height of the support frame in the head area permits good access for biopsy and the recess in the pelvic region makes it very comfortable.

For basic imaging, a positioning base frame and the patient support are used.

When it comes to interventional procedures, an additional biopsy unit can be inserted into the base frame. The biopsy unit is rotatable, allows medial-lateral and even cranio-caudal access to the lesion.

The MR-guided biopsy procedure planning is supported by a *syngo* menu-driven user interface and compatible with most dedicated breast workstations.*

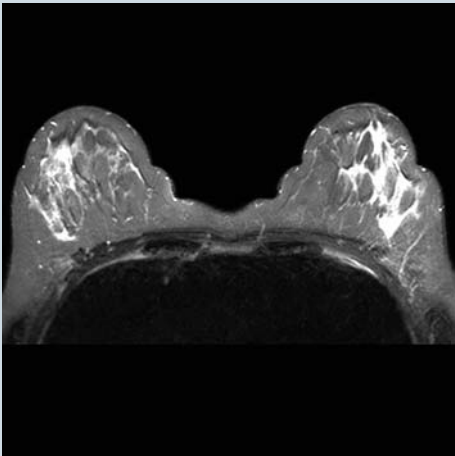
* Such as DynaCAD, Confirma, CAD Science, ...



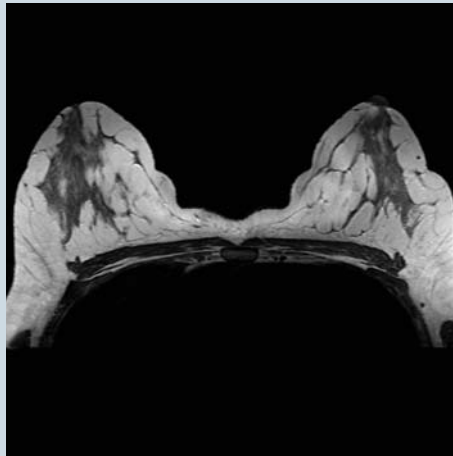
4-channel BI Breast coil with biopsy insert for medio-lateral access

Biopsy equipment adapters, such as for hook wire localization, vacuum assisted biopsy and core biopsy are compatible with the biopsy unit.

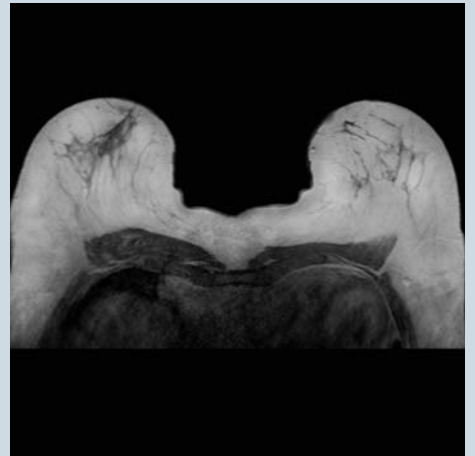
The new 4-channel BI Breast coil is available for all MAGNETOM Tim systems with T-class and I-class. It is an efficient, patient-friendly solution for breast MR biopsy and imaging.



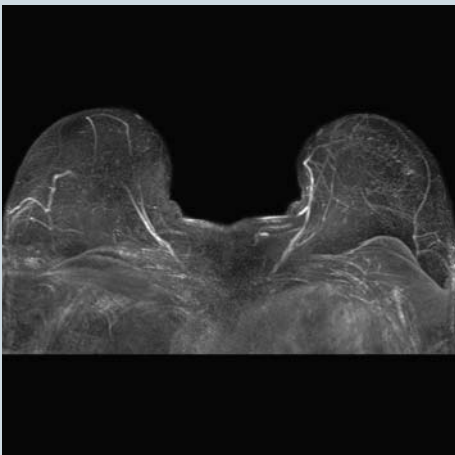
Courtesy of Center of Operative Medicine, Wuerzburg, Germany



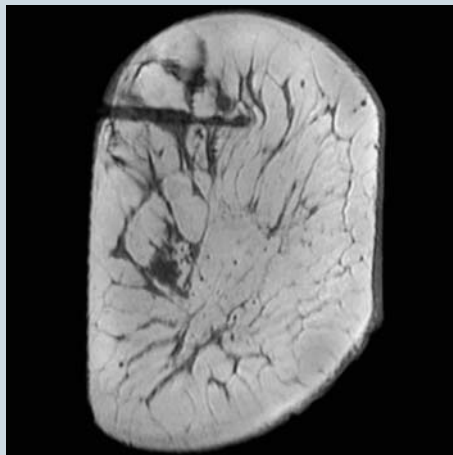
Courtesy of Center of Operative Medicine, Wuerzburg, Germany



Courtesy of Alice Hospital, Darmstadt, Germany



Courtesy of Alice Hospital, Darmstadt, Germany



Courtesy of Inselspital Bern, Department of Radiology, Neuroradiology and Nuclear Medicine (DRNN), Bern, Switzerland

On account of certain regional limitations of sales rights and service availability, we cannot guarantee that all products included in this brochure are available through the Siemens sales organization worldwide. Availability and packaging may vary by country and is subject to change without prior notice. Some/All of the features and products described herein may not be available in the United States.

All devices listed herein may not be licensed according to Canadian Medical Devices Regulations.

The information in this document contains general technical descriptions of specifications and options as well as standard and optional features which do not always have to be present in individual cases.

Siemens reserves the right to modify the design, packaging, specifications and options described herein without prior notice. Please contact your local Siemens sales representative for the most current information.

Note: Any technical data contained in this document may vary within defined tolerances. Original images always lose a certain amount of detail when reproduced.

Please find fitting accessories:
www.siemens.com/medical-accessories

Local Contact Information

In the USA

Siemens Medical Solutions USA, Inc.
51 Valley Stream Parkway
Malvern, PA 19355
Phone: +1 888-826-9702
Phone: +1 610-448-4500
Fax: +1 610-448-2554

In Japan

Siemens-Asahi
Medical Technologies Ltd.
Takanawa Park Tower 14F
20-14, Higashi-Gotanda 3-chome
Shinagawa-ku
Tokyo 141-8644
Phone: +81 3 5423 8411

In Asia

Siemens Pte Ltd
Healthcare Sector
Regional Headquarters
The Siemens Center
60 MacPherson Road
Singapore 348615
Phone: +65 6490-6000
Fax: +65 6490-6001

Global Business Unit

Siemens AG
Medical Solutions
Magnetic Resonance
Henkestr. 127
DE-91052 Erlangen
Germany
Phone: +49 9131 84-0

Global Siemens Headquarters

Siemens AG
Wittelsbacherplatz 2
80333 Muenchen
Germany

Global Siemens Healthcare Headquarters

Siemens AG
Healthcare Sector
Henkestr. 127
91052 Erlangen
Germany
Phone: +49 9131 84-0
www.siemens.com/healthcare

Legal Manufacturer

Siemens AG
Wittelsbacherplatz 2
DE-80333 Muenchen
Germany

www.siemens.com/healthcare