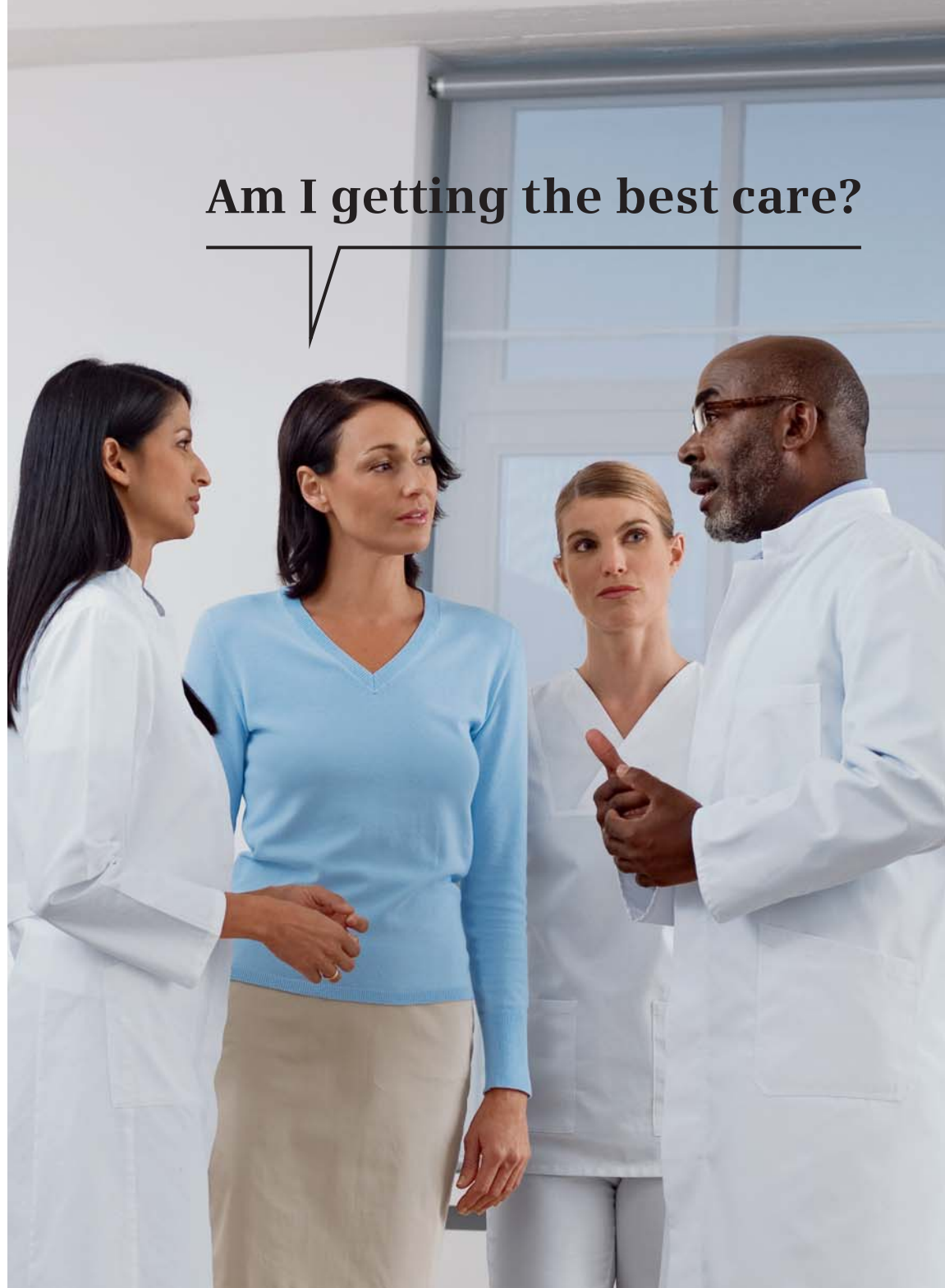


Am I getting the best care?



Breast Care Solutions

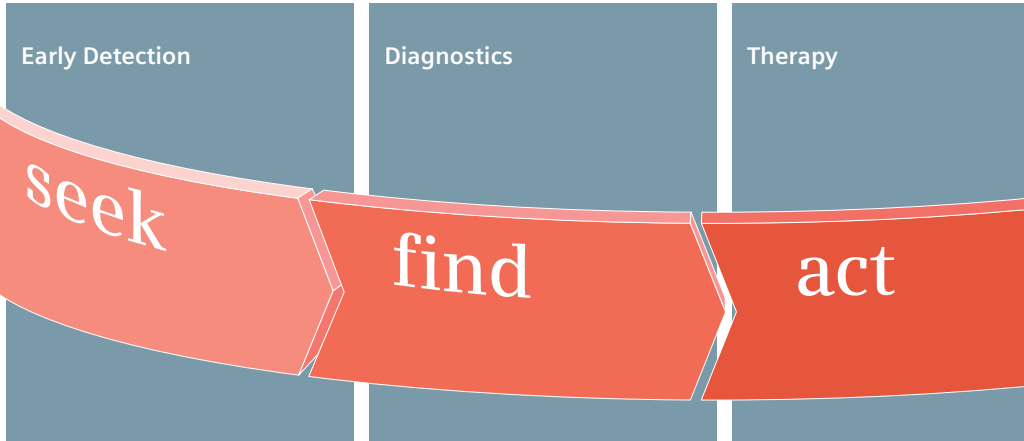
Annual 2009

Answers for life.

SIEMENS

Content

The Siemens approach



Optimized patient flows
A consulting success story
 04

A dedicated workplace
syngo MammoReport
 04

Integrated diagnostics
 In-vitro and in-vivo going
 hand in hand
 05

Breast Cancer Care
 A discussion between three
 radiologists
 05

Automated Breast Volume Scanning
 ACUSON S2000ABVS
 ultrasound system
 06

A helpful add-on tool
syngo MammoCAD
 06

Mobile mammo screening
 Mammo-Mobile trailer
 07

A dedicated MR breast scanner
 MAGNETOM Espree – Pink
 08

Future of mammography
 Digital breast tomosynthesis
 09

All-in-one solution
 MAMMOMAT Inspiration
 with stereotactic biopsy
 09

Advances in radiation therapy
 ARTISTE Solutions
 10

MR applications
 To answer all needs
 of breast care
 10

Please find under each article a Web-site address where you will get further information on the respective topic.

Dear reader,

In recent years, women have become increasingly well informed about breast cancer, in large part as a result of education campaigns and the focus of the news media on all aspects of the disease. The empowered healthcare consumer is acutely aware of her own risk factors, the criticality of screening, as well as treatment options. HER-2 has made its way into dialogue among women and between women and their physicians.



Tom Miller

As empowered consumers, women are making informed decisions about where they choose to receive screening and care.

That means that breast care centers must now establish a competitive difference in order to attract patients. How does a center gain such a competitive advantage beyond the inherent basics of medical competence, advanced technologies, and an unwavering commitment to the highest quality of care?

Certainly, there are factors such as cutting edge technology, encompassing the entire continuum of care, from screening to diagnosis, therapy, and aftercare. Integrating all aspects across the continuum within a patient-centered approach offers great advantages.

Incorporating in-vivo and in-vitro diagnostics, and advanced therapeutics, surrounded by sophisticated IT systems that capture and manage all details about an individual empowers the breast care center and the patient. It supports speed and accuracy when making diagnosis and treatment decisions but supports continuity of care within a 'medical home' that frees a patient from multiple and often disconnected clinical settings at a time when stress is high and speed is critical. And, on-demand access to clinical information and a full array of screening and diagnostics enables the clinician to make informed clinical decisions without delay.

Such a personalized approach to breast care is only possible if all of the enabling technologies are integrated to facilitate seamless workflow across the continuum, enabling best practice care at every stage of breast care. Siemens, with our comprehensive portfolio that spans the complete continuum from screening through therapy, can provide your practice with this all-inclusive solutions approach.

I invite you to take the time to read through our annual Breast Care Solutions report and learn for yourself about the benefits of our innovative solutions, holistic approach, and our commitment to supporting you in providing the best possible services and care for your patients.

Sincerely,



Tom Miller
CEO Division Workflow & Solutions
Siemens Healthcare

Aftercare

follow

Monitoring breast cancer

Siemens Serum
HER-2/neu test

11

A dedicated MR breast scanner

MAGNETOM Espree – Pink

08

Future of mammography

MAMMOMAT Inspiration
with stereotactic biopsy

09

All-in-one solution

Digital breast tomosynthesis

09



The Siemens approach

- **Partnership** – we are living our commitment to you
- **Consulting** – we listen to you before we act
- **Innovation** – we help you turn your vision into reality
- **Integration** – we make things flow for you

Breast Care Solutions. All from one source.

Optimized patient flows in the Diakonessenhuis in the Netherlands

A Siemens Healthcare Consulting success story

Rapid medical advances, the quest for the ideal cost-to-benefit ratio, and rising patient expectations are some of the challenges healthcare providers are facing today. Our Healthcare Consulting team helps you answer these challenges – as we did for the Diakonessenhuis with branches in Utrecht, Zeist, and Doorn in the Netherlands. The challenge: The hospital can not calculate to the minute when a patient will come to see a doctor. So even though the employees would like to offer tailor-made care to every single patient, they often simply do not have the time to do that. So the goal was to boost service delivery as a whole and bring it to a new level in a structural sense, and to reach a more patient-oriented care.

To place the patient in the center of the workflow, the hospital requested consultants from Siemens Healthcare. As a first step, the consultants performed a workshop with hospital representatives. The objective: to optimize patient flows and streamline processes. A trio of such

patient flows stood at the heart of the project: mamma carcinoma, varicose vein operations, and endoscopy. For the treatment of varicose veins, the hospital could, for example, cut the necessary steps in half. In addition, they always include additional time when scheduling treatment for breast cancer patients to be able to react to unexpected peaks. The consultants accompany the customer to this day – helping to implement these and others of their recommendations. Frequently, this results in strong partnerships: So through their teamwork with Siemens, the Diakonessenhuis was able to harness international experience and benchmarks as well.



Siemens Healthcare Consultants

Read more at:
www.siemens.com/hccg

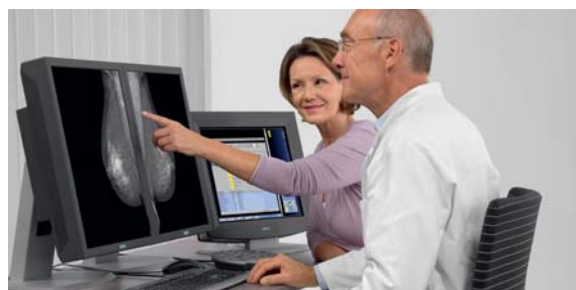
A dedicated workplace for intelligent workflow

syngo MammoReport unites different data sources

Integrated workflow solutions are setting new standards for best-in-class workflow. The goal is to help clinical staff work more efficiently, by providing a system that seamlessly offers information from different sources, such as RIS or PACS. Our syngo MammoReport is a dedicated workplace especially for Breast Care that supports reading and reporting mammograms in screening and diagnostics.

syngo MammoReport unites mammography, ultrasound, and magnetic resonance – and can be easily integrated into RIS and PACS. Siemens' syngo Imaging (PACS) combines cutting-edge features for reading, planning exams, and reporting with easy installation, easy usage, and easy expansion at an attractive cost-benefit ratio. Among numerous breast-care-related tools, syngo MammoReport will also support a

CAD-driven workflow, IHE, and BI-RADS®. Offering high-speed access to all necessary image data, advanced data display and handling, syngo MammoReport will improve both confidence and workflow.



Having all necessary information at one workplace – with syngo MammoReport

Read more at:
www.siemens.com/mammoreport

Breast Cancer: Where are we – and where are we heading?

A discussion between three radiologist from three continents



John F. Nelson
MD, Medical Director,
Battlefield Imaging,
Battlefield Auxiliary
Breast Center,
Ringgold, GA, USA



Karsten Ridder
MD, Radiological Group
Practice, Outpatient Clinic
Prof. Dr. Uhlenbrock
and Partners, Diagnostic
Breast Center,
St. Josefs-Hospital,
Dortmund-Hoerde,
Germany



Gladys Lo
MD, Chief Radiologist,
Department of
Diagnostic and
Interventional Radi-
ology, Hong Kong
Sanatorium
and Hospital,
Hong Kong, China

Today, physicians and clinicians are using an arsenal of integrated diagnostics that have revolutionized the management of breast cancer. "I think probably everyone would agree that improved screenings have saved lives," says John F. Nelson, MD, Medical Director of Battlefield Auxiliary Breast Center in Ringgold, Georgia, U.S. "That has really changed the way I practice." Integrated diagnostics have other benefits, including improved workflow and patient convenience. Gladys Lo, MD, Chief Radiologist at Hong Kong Sanatorium, emphasizes how new approaches to diagnosis and treatment have positive emotional ramifications. "For patients who all of the

sudden find out they have some abnormality, they would like to find out the exact extent of what it is right away. If you send them to all different types of places and they have to wait, that's tremendously stressful on them."

Technologically, huge strides have been made in the imaging field in the last two decades. Integrating laboratory diagnostics, advanced imaging, and information technologies can improve a patient's outcome at every stage of care. In addition, integrated technology affects workflow. "It is much faster and more precise than before," says Dr. Karsten

Ridder of St. Josefs-Hospital, Dortmund, Germany.

In order to manage the journey of detecting, coping with, and beating breast cancer, women today should know not only about early detection and treatment, but specifically on what to look for in hospital imaging equipment and how the level of technology may make a difference in a person's life. All scanners are not created equally.

Read more at: www.siemens.com/Medical-Solutions-Breastcare-2008

Integrated diagnostics to individualize therapy

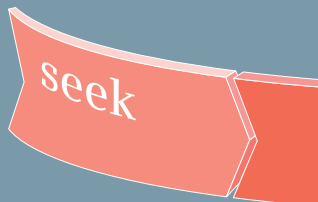
In-vitro and in-vivo going hand in hand

In a healthcare environment where physicians, radiologists, pathologists – even patients – work as a team, where will the next generation of optimized care emerge? The answer is integrated diagnostics: Fully coordinated laboratory diagnostics (in-vitro diagnostics) and imaging technology (in-vivo diagnostics) that provide interpreted, action-oriented results at every stage of the patient care continuum. By providing the right information at the right time, integrated diagnostics leads to improved clinical decision making from early screening to follow-up. As the world's first integrated diagnostics company, Siemens is uniquely positioned to help you explore this new era in advanced healthcare.

With our solutions for in-vivo and in-vitro, we can help you drive quality improvements, strengthen cost containment, and positively influence patient outcomes. Over the long term, the benefits of inte-

grated diagnostics include a more patient-centric healthcare. Patients will receive individualized and targeted care with specific tests, procedures, and therapies according to their health and disease state. They will also receive their diagnosis quicker, at earlier stages of a disease, improving their quality of life. Physicians can make optimal treatment decisions sooner, based on a complete diagnostic picture. They can proactively manage patient care, rather than simply treating a disease. Moreover, the efficiency and accuracy of patient care can be dramatically improved during screening, diagnosis, treatment, and aftercare. And in combination with a streamlined workflow, integrated diagnostics will create a competitive advantage for healthcare providers – that is even cost-efficient in the end.

Read more at:
www.siemens.com/integrated-diagnostics



Seek. Whatever the individual situation, our innovations make screening and early diagnosis more reliable, efficient, and comfortable than ever before – enabling early and therefore more effective therapeutic intervention.

Automatic acquisition of clinical images takes operator dependence and variability out of breast

ACUSON S2000 Automated Breast Volume Scanner redefines ultrasound’s role in breast imaging

According to the New England Journal of Medicine¹, dense breast tissue increases a woman’s risk of breast cancer up to five-fold. While mammography remains the method of choice for breast cancer screening, a study² published in 2008 found that if a screening ultrasound was added to a routine mammogram, 28 percent more cancers were revealed than with mammography alone.

Conventional hand held breast ultrasound is time-consuming and requires a high level of expertise of the operator. This is why ultrasound’s role in breast imaging has traditionally been that of a secondary imaging modality to look at a palpable mass or a finding identified on a mammogram. A new method of acquiring and analyzing ultrasound images has the

potential to change that. The world’s first multi-use volume breast ultrasound system, the ACUSON S2000™ Automated Breast Volume Scanner (ABVS), automatically acquires full-field sonographic volumes of the breast for comprehensive review and diagnosis. The system has an innovative, mobile in-suite design combining the advanced ACUSON S2000™ ultrasound system with a transducer specifically designed for automated ultrasound breast scanning.

During the acquisition, up to 400 single images are captured in one scan to calculate the volumes which are sent to a workstation for review and analysis. One of the big advantages of volume breast imaging is the view of the intuitive, anatomical coronal plane which has not been available using conventional ultrasound. This view provides a more comprehensive and easily understandable representation of the global anatomy and architecture of the breast. Furthermore, the workstation features semi-automated reporting and

A tool to help increase confident breast care diagnosis

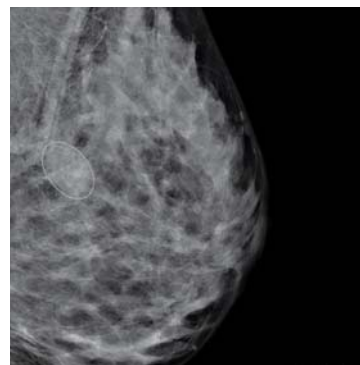
syngo MammoCAD helps clinicians as a second reader

For over a decade now, computer-assisted detection (CAD) technology has proven itself as a value-added tool to aid in mammography interpretation. *syngo* MammoCAD analyzes images from the Siemens full-field digital mammography systems and generates CAD marks to highlight suspicious areas, such as masses and microcalcifications.

“CAD is an add-on for diagnostic work or in a screening situation, to help you find something that you might miss,” says Finn Lindhardt, MD, senior consultant, Breast Center in Viborg, Denmark, a user of *syngo* MammoCAD. “You can use it for dense lesions in the breast, so that the system can mark regions of interest, showing findings [that] are suspicious.”¹

syngo MammoCAD produces an identifier that urges the attention of a radiologist, to lesions that might otherwise be overlooked.

“Using *syngo* MammoCAD is really helpful going through the 40-60 mammograms and screenings I review every morning,” says Dr. Karsten Ridder, MD, from the St. Josefs-Hospital in Dortmund-Hoerde, Germany. “I used to review all the possibilities to find even smaller lesions. The second reader tool is beneficial and helps me with my second review.”



syngo MammoCAD marking a suspicious lesion for further review

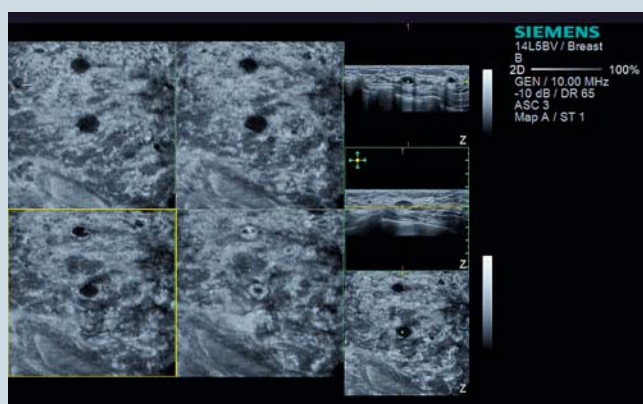
*Not yet available for sale in the U.S.
¹When to Use CAD in Breast Imaging, *Health Imaging & IT*, December 9, 2008

Read more at: www.siemens.com/mammoCAD

ultrasound

comprehensive BI-RADS® reporting capabilities to further enhance the clinical workflow.

A complete breast imaging solution, the ACUSON S2000ABVS also supports hand held ultrasound for innovative breast imaging applications, such as fatty tissue imaging, eSie Touch™ elasticity imaging and biopsy procedures.



Read more at:
www.siemens.com/abvs

¹ N Engl J Med 356;3. Boyd N.F. et Al., Mammographic Density and the Risk and Detection of Breast Cancer
² JAMA, May 14, 2008; 299: 2151 – 2163

How to provide mammo screening for women close to their homes

It's simple with mobile mammography screening

It is well known and often repeated: Early detection of breast cancer saves lives and mammography is the clinical method of choice for screening programs. That's why most countries initiated nation-wide screening programs. As a result, a great number of breast centers were founded. Most of them, however, in bigger cities because setting up stationary centers in rural areas is not really a viable proposition. But how do you get the great number of women who do not live in a city to accept an invitation for a mammography screening?

Siemens relies on mobility. In cooperation with several customers and carbody factories, the so-called Mammo-Trailer has been developed. This involves a trailer, which accommodates a mammography practice equipped with the latest Siemens technology. Thanks to digitalization, the mammographer can submit a finished exam immediately to the main breast center for interpretation. Internationally, there are already numerous trailers from Siemens in use for millions of women living in rural regions. The road to high-quality preventative exams with the latest mammography systems got shorter.



The Mammo-Trailer gives patients living in rural areas access to mammo screenings

Read more at:
www.siemens.com/mammo-trailer



Introducing the next generation of breast MRI

Our new MAGNETOM Espree – Pink



MAGNETOM Espree – Pink is the shortest system (125 cm) on the market, offering high flexibility and increased patient comfort. Patients can be examined in feet-first position as well as in head-first position.

find

Find. Siemens Breast Care Solutions provide a broad basis for reliable decision-making. With our complete portfolio of imaging modalities and clinical procedures, abnormalities can be quickly and easily detected – even difficult-to-define disease patterns.

The American National Cancer Institute estimates that a woman has a 1-in-8 chance of developing breast cancer during her lifetime. Their new guidelines will impact up to 1.4 million high-risk women by recommending they receive annual MRI screenings.

A high percentage of these women will benefit from breast MRI. We have understood and introduce our first dedicated MR breast scanner, MAGNETOM Espree – Pink.

MAGNETOM Espree – Pink with its short open bore is specifically designed for breast MRI. With a diameter of 70 centimeters, the magnet bore is 10 centimeters wider than most conventional systems. Furthermore, with 125 centimeters, the MAGNETOM Espree – Pink is the shortest system available on the market. Patients can be positioned either feet-first or head-first, according to requirements. The design of the MAGNETOM Espree – Pink is an enormous advantage for patients who feel confined by the spatial constrictions of conventional MRI systems. Moreover, the scanner also offers sufficient space for adipose patients.

“One important component of the new system is the ‘Sentinelle Vanguard for Siemens’ breast coil, which can be used flexibly to optimize workflow. The customer benefits from excellent image quality, optimized biopsy access with improved accuracy, and short examination times, which enable a higher patient throughput,” said Walter Märzendorfer, CEO of Magnetic Resonance Imaging at Siemens Healthcare.

MAGNETOM Espree – Pink additionally offers a comprehensive range of standard and advanced applications for breast imaging. These include, among others, the Breast Suite with *syngo* Views which fulfills all needs of routine breast MRI, *syngo* GRACE for quantitative MR breast spectroscopy, and *syngo* BLADE that ensures motion-free images when the patient moves during the examination.

The workstation of the MAGNETOM Espree – Pink is equipped with the new *syngo* BreVis and *syngo* BreVis Biopsy software applications for effective, accurate breast reading and precise, easy-to-use biopsy planning. For example, *syngo* BreVis enables clinicians to prepare reports, calculate the size of a lesion, or compare MRI results with ultrasound or X-ray mammography images. The *syngo* BreVis Biopsy software application supports the physician in performing biopsies accurately and quickly using automatic calculations and pre-settings.

Read more at:
www.siemens.com/espree-pink

The future of mammography: digital breast tomosynthesis

Proven in a Swedish study



Patient with a 2.8 cm, grade 3, invasive ductal carcinoma in the right breast. Imaged with Digital Mammography (DM) and Breast Tomosynthesis (BT)²

- 1 The CC DM view shows a slight distortion in the mid-right breast.
- 2 The MLO DM view shows dense breast tissue with subtle distortion in the lower breast where the patient felt a mass.
- 3 The MLO BT view shows a spiculated mass in the lower breast, much more evident than the corresponding mammogram shown in the second image.

Even though projection mammography offers many advantages, there are limitations due to the fact that the 3D anatomical information is projected into a 2D image plane. Therefore, anatomical structures that overlap the tumors limit the radiologist's ability to detect certain cancers. It's like in photography: When taking a picture of a group of people and someone smaller is standing behind a tall person, he cannot be seen in the picture. You would have to go around the tall person and take a picture from a different angle.

Digital breast tomosynthesis is a new clinical method that functions in a similar way: a 3D imaging technology, where 2D projection images of a compressed breast are acquired at multiple angles during one sweep of the X-ray tube. It thus has the potential to improve sensitivity in the detection of breast cancer due to reduced overlap of breast tissue, particularly in dense breasts. The new technique may also lead to significant improvements in specificity as the 3D analysis of the distribution of microcalcifications as well as of shape and margin of lesions might become easier. This could lead to a reduction in patient recalls and to fewer biopsies.

The University Hospital in Malmö, Sweden, conducted a study¹ under the direction of Dr. Ingvar Andersson to compare breast cancer visibility in one-view breast tomosynthesis to cancer visibility in one- or two-view digital mammography. Thirty-six patients were selected on the basis of subtle signs of breast cancer with digital mammography or suspicious lesions with ultrasound. The outcome of the study was that single-view breast tomosynthesis had a higher sensitivity for breast cancer detection than either one- or two-view digital mammography: More lesions were found using breast tomosynthesis and they could be better visualized. As a result, tomosynthesis would have led to a BIRADS upgrade in a significant number of patients.

MAMMOMAT Inspiration also applicable for biopsies

Making it an all-in-one solution for breast care

Biopsies are the standard method to clarify if a tumor or lesion is malignant or benign. For this, special biopsy systems are needed. MAMMOMAT Inspiration proves to be an economical mammography platform as it can be used to perform not only screening and diagnostic mammography, but biopsies as well. No additional workstation is required to perform stereotactic biopsy. The biopsy procedure is automated to a high degree, as the fully-motorized needle-holder moves automatically to the right position, after selecting the target. The biopsy unit can be easily mounted onto the system by sliding an additional cover with the biopsy tower over the object table on the mammography stand. Thus, biopsy images are acquired on the same full-field digital mammography detector. Once the biopsy unit is mounted, MAMMOMAT Inspiration automatically detects the new hardware and the user interface at the Acquisition Workstation (AWS) is automatically set for biopsy. So it's simply "plug and play" to change the MAMMOMAT Inspiration from a mammography to a biopsy system.

Read more at:
www.siemens.com/tomosynthesis
www.siemens.com/stereotactic-biopsy

¹Andersson et al; Eur Radiol 18: 2817; 2008

²Courtesy of University Hospital, Malmö, Sweden



Advances in radiation therapy

Providing individualized treatment for breast cancer patients

For clinicians, treating breast cancer presents a number of challenges and care must be taken to spare healthy tissue; particularly the contralateral breast tissue, as well as the heart and lungs.



ARTISTE Solution

Siemens' newest linear accelerator, ARTISTE™ Solution, conveniently integrates advanced imaging and treatment delivery technologies into one machine, giving clinicians the flexibility to provide specialized care. One of the imaging

options, MVision Cone Beam Imaging, is remarkably efficient at providing the sharp soft-tissue contrast needed to precisely position the breast cancer patient. Using the 3D images acquired with MVision, ARTISTE's 160 MLC Multileaf Collimator's fast leaf speed and extremely low leakage allow clinicians to quickly and accurately deliver higher radiation doses to the target while helping to protect surrounding healthy tissue and vital organs.

In addition, this linear accelerator's unique in-line design streamlines workflow and provides great patient access. It allows clinicians to treat a larger number of patients; plus, the speed of treatment, simplicity of the process, and open access to clinician makes the patients' experience less intimidating. Having the technology to treat with precision and speed allows clinicians to focus on their top priority: their patients. At the end of the day, ARTISTE accommodates the needs of patients and clinicians alike, enabling delivery of individualized radiation therapy and helping improve treatment outcomes of breast cancer patients around the world.

Read more at:
www.siemens.com/artiste

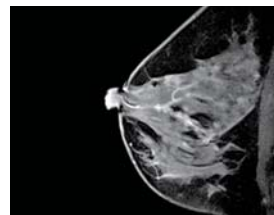
MR applications that answer all needs of breast care

Applications that help assess therapy efficacy

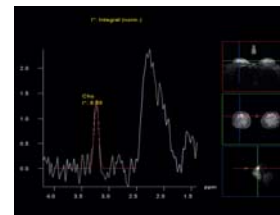
Our MAGNETOM family offers dedicated applications to monitor the development of tumors and lesions during breast cancer therapy: *syngo* VIEWS (Volume Imaging with Enhanced Water Signal) can help provide ongoing anatomical and functional information about the lesion. It shows excellent fat suppression and provides 3D bilateral breast imaging in submillimeter range by stimulating the water spins. Physicians benefit from full coverage of both breasts to monitor also the non-affected breast tissue and from lateral coverage up to the axillary region. Fast imaging in excellent quality is delivered by *syngo* VIEWS in combination with *syngo* GRAPPA, our unique parallel imaging technique. Due to 3D isotropic voxels, both breasts can be viewed at the same time and images rotated in all directions for a more accurate diagnosis. Both applications are powered by Tim, which delivers accelerated acquisition speed – while providing the high

spatial resolution needed. In addition, *syngo* GRACE can provide quantified metabolic tissue information by utilizing choline as a biomarker. It supplies information on the biochemical composition of breast lesions, and helps increase confidence in the assessment of therapy efficacy.

Read more at:
www.siemens.com/mr-applications



syngo VIEWS
 Image showing a left sagittal breast and the ductal structure with ductal carcinoma in situ pattern along the duct.*



syngo GRACE
 Breast spectroscopy with quantification for effective therapy monitoring and lesion differentiation.

*Courtesy of Cardinal MRI Center San Juan, Manila, Philippines

act

Act. Our innovative portfolio of products offers a leading-edge platform of technologies for complete therapy. We provide clinicians with the flexibility, precision, and confidence to successfully treat each disease pattern and improve patient outcomes.

New patient study suggests Siemens non-invasive blood test may have a role in monitoring breast cancer patients

Siemens Serum HER-2/neu test



Metastatic cancer is an advanced stage of cancer that has spread to one or more sites throughout the body. Studies now document that up to 90% of metastatic breast cancer (MBC) patients can have HER-2/neu positive tumors, which is a very aggressive type of breast cancer that responds less favorably to treatment. As recommended by the National Comprehensive Cancer Network (NCCN), clinicians should determine if patients are HER-2/neu positive by tissue testing. It is important to identify these patients because they may benefit from Herceptin therapy, which specifically targets this aggressive type of cancer.

A new study published in the American Cancer Society journal *Cancer*, supports using the Siemens Serum HER-2/neu test, a non-invasive blood test, to monitor MBC patients and their response to therapy on the widely-used Herceptin® therapy. The Siemens Serum HER-2/neu test was used in the study and was cleared by the U.S. Food and Drug Administration (FDA) in September 2000. The use of the Serum HER-2/neu test is indicated for follow-up and monitoring of patients with metastatic breast cancer whose initial serum HER-2/neu value is greater

than 15 ng/mL. HER-2/neu values should be used in conjunction with information available from clinical and other diagnostic procedures in the management of metastatic breast cancer. The Serum HER-2/neu test can be used to monitor metastatic breast cancer patients on any therapy including hormone therapy, chemotherapy, HER-2 targeted therapy and combination therapy.

The study states that out of the 307 patients with MBC monitored, 191 patients (62%) had a significant decline (>20%) in Serum HER-2/neu and 116 patients (38%) did not. The response to therapy was 57% for patients who achieved this decline in Serum HER-2/neu (>20%) compared with 28% for patients who did not. Patients who achieved this decline in Serum HER-2/neu also had a significantly longer time to disease progression (a longer period of response to therapy) and longer overall survival. These results support the use of Siemens' Serum HER-2/neu test while monitoring Herceptin therapy.

Read more at:
www.siemens.com/herstory

* "Serum Human Epidermal Growth Factor Receptor 2 Proto-oncogene and Relative Resistance to Trastuzumab-based Therapy in Patients with Metastatic Breast Cancer"; authors Suhail M. Ali, MD, Walter P. Carney, PhD, Francisco J. Esteva, MD, PhD, Monica Fornier, MD, Lyndsay Harris, MD, Wolfgang J. Köstler, MD, Jean-Pierre Lotz, MD, Diana Luftner, MD, Marie-France Pichon, PharmD, DSc, Allan Lipton, MD, the Serum HER-2/neu Study Group; *Cancer*, Volume 113 issue 6; pages 1294-1301 (October 2008)



follow

Follow. With our diverse imaging solutions and innovative methods, we support you in providing the best possible aftercare. Our comprehensive and caring view helps you improve the health perspectives of your patient.

This brochure is not for distribution in the US.

On account of certain regional limitations of sales rights and service availability, we cannot guarantee that all products included in this brochure are available through the Siemens sales organization worldwide. Availability and packaging may vary by country and are subject to change without prior notice. Some/all of the features and products described herein may not be available in the United States.

The information in this document contains general technical descriptions of specifications and options as well as standard and optional features which do not always have to be present in individual cases.

Siemens reserves the right to modify the design, packaging, specifications, and options described herein without prior notice. Please contact your local Siemens sales representative for the most current information.

Note: Any technical data contained in this document may vary within defined tolerances. Original images always lose a certain amount of detail when reproduced.

Local Contact Information

In Japan

Siemens-Asahi
Medical Technologies Ltd.
Takanawa Park Tower 14F
3-20-14, Higashi-gotanda
Shinagawa-ku
Tokyo 141-8644
Phone: +81 3 5423 8510

In Asia

Siemens Pte Ltd
Healthcare Sector
Regional Headquarters
The Siemens Center
60 MacPherson Road
Singapore 348615
Phone: +65 6490 8182

In Germany

Siemens AG
Healthcare Sector
Karlheinz-Kaske-Str. 2
91052 Erlangen
Phone: +49 9131 84-0

Global Business Unit EU Authorized Representative

Siemens AG
Medical Solutions
Special Systems
Henkestr. 127
DE-91052 Erlangen
Germany
Phone: +49 9131 84-0
www.siemens.com/healthcare

Global Siemens Headquarters

Siemens AG
Wittelsbacherplatz 2
80333 Muenchen
Germany

Global Siemens Healthcare Headquarters

Siemens AG
Healthcare Sector
Henkestr. 127
91052 Erlangen
Germany
Phone: +49 9131 84-0
www.siemens.com/healthcare

Legal Manufacturer

Siemens AG
Wittelsbacherplatz 2
DE-80333 Muenchen
Germany

www.siemens.com/healthcare