

Want a quick and easy way to accurately fit your patients?

BestSound™
Technology

New CONNEX 6.4 -
Now with the newest NAL-NL2 fitting formula

Answers for life.

SIEMENS



Best Fitting

To make it easy for you to satisfy your patients, Siemens offers Best Fitting Support with new ways to get the right fit every time. The following new features help facilitate every step of the fitting process:

- Better patient acceptance through more individualized fittings with the newest **NAL-NL2 fitting formula**
- Smarter trainable hearing instruments with **SoundLearning® 2.0**
- Easier demonstration of select advanced instrument features with **Real Time Display**
- Better counseling tools with **Hearing Loss Simulator**
- Quicker more accurate fittings with **AutoFit** real ear measurement target fitting
- Greater comfort for patients and less office clutter with **ConnexxLink®** wireless programming interface

Prescriptive fitting: NAL-NL2 and ConnexxFit®

Initial fittings can sometimes feel more like art than science, since even two patients with the same hearing loss can have different preferences and needs. Siemens CONNEXX® 6.4 is the first fitting platform that supports the extensively researched NAL-NL2 fitting that accounts for factors like age, gender, amplification experience, and language. Siemens proprietary fitting formula, ConnexxFit®, is now also based on NAL-NL2.

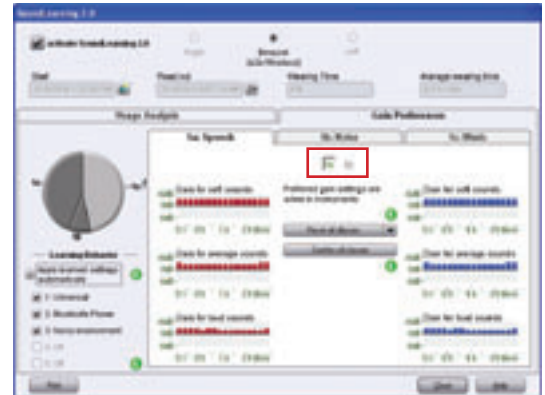


SoundLearning® 2.0

SoundLearning 2.0 is the next evolution in trainable hearing instruments. SoundLearning 2.0 is able to automatically apply optimum settings for speech, noise, and music, all within the same program. SoundLearning 2.0 is only available in the Universal Program. Programs 2 and 3 support SoundLearning. When SoundLearning 2.0 is activated, the Universal program automatically learns independent setting preferences for Speech, Noise, and Music. After the wearer has used the instruments for a certain period of time (approximately two weeks), the SoundLearning 2.0 dialog shows logged information. This information includes wearing time, microphone, and Speech and Noise Management usage for each selected program. The Acoustical Environment section shows the percentage of time the wearer has been listening to speech, noise, and music. This percentage is also reflected in the Usage Analysis pie chart.



Click on Gain Preferences tab to see learned gain settings for each of the three situations under the Universal Program. When learning has occurred for one of the three situations, an exclamation point (!) will be displayed in the respective situation on the pie chart. Learned values can be displayed as gain curves or as channel gain.



Real Time Display

Within CONNEXX is an easy way to let wearers see and hear key hearing instrument features so they and their family members or caregivers can clearly see the benefits of the selected hearing solution.

New to the Real Time Display feature and hearing instruments in the 701 performance level is an option demonstrating SpeechFocus™ which automatically selects the optimum directivity pattern – even for speech originating from the side or back.

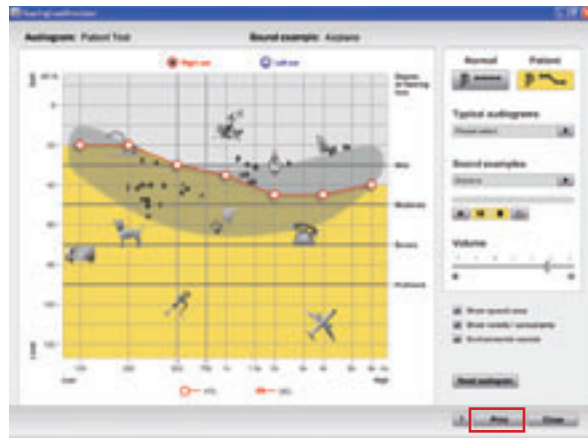
In addition to 700 performance level products, the Real Time Display feature is now available for all products in the 301, 501 and 701 performance levels.



Hearing Loss Simulator

The Hearing Loss Simulator, introduced in a prior version of CONNEXX, is a counseling tool designed to help families and significant others understand the impact of hearing loss.

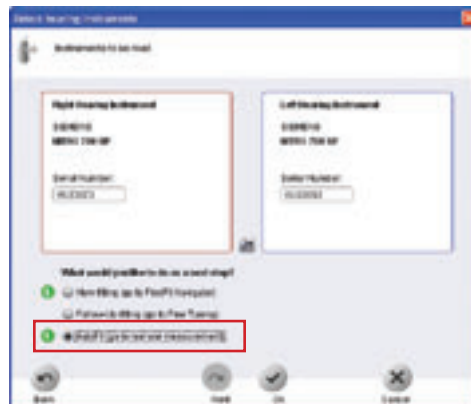
Based on requests from CONNEXX users, improvements have been made to the Hearing Loss Simulator. First and most notably is the ability to print the information displayed on the screen. Additionally a "Speech Only" sound example has been added.





AutoFit Siemens AutoFit is an option within the CONNEXX in-situ feature which automatically adjusts the frequency response of a hearing instrument to match prescriptive gain targets at the click of a button. AutoFit works by directly using the probe measurement system to carry out real ear measurements from either Siemens UNITY, UNITY 2, and now GN Otometric's Aurical™. This data is then used by CONNEXX to automatically adjust the

hearing instrument frequency response to match specified prescriptive targets in the ear. This provides the ability to perform in-situ measurements without initializing the measurement software separately, and thereby significantly reduces time of fitting hearing instruments to prescriptive targets.



To decrease the amount of fitting time even more, the AutoFit option has been added to the hearing instrument detection step so First Fit™ can be performed once based on the patient's real ear curves.

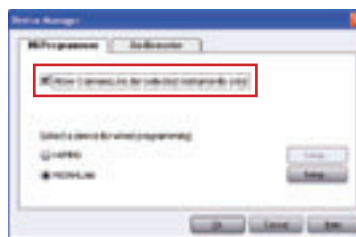
ConnexxLink

Avoid the tangled clutter of programming cables and allow your patients greater freedom and comfort during fitting with the elegant Siemens ConnexxLink® completely wireless programming interface. This easy to use system works with any of the new instruments with BestSound™ Technology that have e2e wireless® 2.0. Simply plug the pre-paired dongle into the USB port of the PC, and place the

ConnexxLink lanyard around the patient's neck. Using Bluetooth® technology, ConnexxLink wirelessly communicates to the PC and the hearing instruments.



To use ConnexxLink, it must first be enabled as a programming device in the Device Manager of CONNEXX.



During hearing instrument detection ConnexxLink will show as a possible programming device option.



Detected wireless hearing instruments will be listed. Right or left ear must be indicated since the instruments are no longer tethered to a dedicated right/left programming cable.



PLEASE NOTE: CONNEXX remembers the programming device that was last used for a fitting session and expects to use the same device for the follow-up fitting. Siemens always recommends detecting the aid first when performing a follow-up fitting as this option also provides the ability to select a different programming device for the fitting. If programming is done immediately, CONNEXX will only expect to utilize the programming device that was last used. In the event that programming device is not being used or no longer available detecting is the only route to select a different programming device.



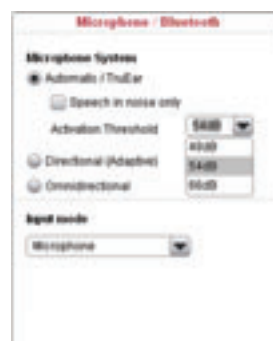
Support for BestSound™ Technology

Siemens hearing instruments with BestSound™ Technology addresses the needs of today's wearers and CONNEX 6.4 offers the following settings when fitting these hearing instruments:

- Better speech clarity in low-noise situations with **Soft Level Directivity**
- Ability to hear speech more clearly, even when it comes from behind the wearer with **SpeechFocus™**
- Complete Product Portfolio
- Flexible hearing instrument configurations with customizable wearer controls

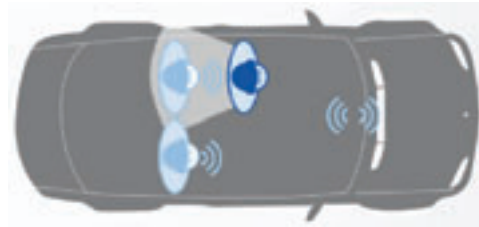
Soft Level Directivity

With Soft Level Directivity, directional microphones can be activated at a much lower noise level to give the wearer some directional advantages in these situations.



SpeechFocus

SpeechFocus overcomes the limitations of traditional directional microphones by automatically focusing on dominant speech signals even if they aren't in front of the wearer. SpeechFocus can improve speech understanding by up to 40% for speech coming from behind the wearer.



The SpeechFocus microphone mode is set from the Microphone/Bluetooth® shade in CONNEXX and is only available for the 701 Product level.



Complete Product Portfolio

In addition to providing programming capabilities from previously releases of CONNEXX, the new version 6.4 provides access to programming the latest hearing instruments offered by SIEMENS with

BestSound™ Technology. These include RIC, Open, and BTE models as well as our Motion® custom products in full shell, half shell, canal, and CIC sizes.

Shell	Name	Match
BTE	Life 701	■■■■■■■■■■
BTE	Life 501	■■■■■■■■■■
BTE	Life 301	■■■■■■■■■■
BTE	Life 101	■■■■■■■■■■
BTE	Motion 701 S	■■■■■■■■■■
BTE	Motion 701 P	■■■■■■■■■■
BTE	Motion 501 G	■■■■■■■■■■
BTE	Motion 501 P	■■■■■■■■■■
RIC	Pure 701 S 106/45	■■■■■■■■■■
RIC	Pure 701 P 122/65	■■■■■■■■■■
RIC	Pure 701 M 110/55	■■■■■■■■■■
RIC	Pure 501 S 106/45	■■■■■■■■■■
RIC	Pure 501 P 122/65	■■■■■■■■■■
RIC	Pure 501 M 110/55	■■■■■■■■■■
RIC	Pure 301 S 106/45	■■■■■■■■■■
RIC	Pure 301 P 122/65	■■■■■■■■■■
RIC	Pure 301 M 110/55	■■■■■■■■■■
RIC	Pure 101 S 106/45	■■■■■■■■■■
RIC	Pure 101 P 122/65	■■■■■■■■■■
RIC	Pure 101 M 110/55	■■■■■■■■■■

Shell	Name	Match
Full Shell	Motion 701 ITE Cir 118/50	■■■■■■■■■■
Full Shell	Motion 701 ITE Cir 118/50 WL	■■■■■■■■■■
Full Shell	Motion 701 ITE Cir 123/55	■■■■■■■■■■
Full Shell	Motion 701 ITE Cir 123/55 WL	■■■■■■■■■■
Half Shell	Motion 701 HS + 113/40	■■■■■■■■■■
Half Shell	Motion 701 HS + 113/40 WL	■■■■■■■■■■
Half Shell	Motion 501 HS + 118/45	■■■■■■■■■■
Half Shell	Motion 501 HS + 118/45 WL	■■■■■■■■■■
Canal	Motion 701 ITC + 113/40	■■■■■■■■■■
Canal	Motion 701 ITC + 113/40 WL	■■■■■■■■■■
Canal	Motion 501 ITC + 118/45	■■■■■■■■■■
Canal	Motion 501 ITC + 118/45 WL	■■■■■■■■■■
CIC	Motion 701 CIC + 113/47	■■■■■■■■■■
CIC	Motion 701 CIC + 113/47 WL	■■■■■■■■■■
CIC	Motion 501 CIC 113/47	■■■■■■■■■■
CIC	Motion 501 CIC 113/47 WL	■■■■■■■■■■







For convenience a new list filter has been added providing the option to limit the product list to a specific performance level.

Manufacturer SIEMENS	<input checked="" type="checkbox"/> BTE	<input checked="" type="checkbox"/> Canal	Volume Control Show All	TCut Show All	e2w Wireless Show All
Family Show All	<input checked="" type="checkbox"/> RIC	<input checked="" type="checkbox"/> Mini Canal	Multiple Programs Show All	Directional Show All	Performance Level 700
	<input checked="" type="checkbox"/> Full Shell	<input checked="" type="checkbox"/> CIC			
	<input checked="" type="checkbox"/> Half Shell				



Customizable Wearer Controls

The Motion® S BTE offers new flexibility with the ability to select and program the new rocker control. The Motion® S BTE comes with three possible control configurations:

- 1. Rocker switch  which can be used as either a volume control or program control. 
- 2. Push button switch  which can be used as a program control. 
- 3. Flat panel  for no on-board control. 

With the correct control placed on the hearing instrument, programming how the control will function in CONNEX is found on the Properties tab located on the Wireless Settings and Accessories dialog.



Installing CONNEXX 6.4 with SIFIT 6.4

Installation on a network

1. First you will need to install CONNEXX on the server. The installation can be done either under NOAH 2, NOAH 3 or stand-alone. Proceed as described in the following sections for the environment of your choice.
2. Once the server installation is completed, reboot the server, then complete all network client installations following the instructions for your specific environment.

Upgrade Note: *When you have successfully upgraded the CONNEXX server, please make sure to update all CONNEXX network client installations.*

3. Please note that the SIFIT database is not installed locally on the Network Client computer; the SIFIT installation step on a Network Client consists of setting up the computer to connect to the hearing aid database (SIFIT) on the Network Server.

Installation under NOAH 3

1. Insert the CONNEXX CD-ROM in the CD drive.
2. Start NOAH 3.
3. In the "Tools" menu, select "Setup" and then "Install Module." Then click "Install New Module" to start the installation.
4. At the "Module Installation" dialog box select the "Look in" drop down menu and choose the CONNEXX CD-ROM. In the window below, select the NOAH3.INI file on the CONNEXX CD-ROM and click the "Open" button to begin installation.
5. The CONNEXX installation program will load. Continue to follow the instructions of the installation wizard. The installation program copies all program files, a device driver, and SIFIT if necessary from the CD-ROM to the hard disk. This may take several minutes. Click "Finish" when complete.
6. Close all programs and exit Windows. Reboot the computer.

Stand-alone installation

It is also possible to install and run CONNEXX in a stand-alone mode, i.e. without the NOAH environment.

1. Insert the CONNEXX CD-ROM in the CD drive.
2. Under "Start" select "Run."
3. Type in the path for the CONNEXX installation file on the CD drive (e.g. d:\setup.exe).
4. The CONNEXX installation program will load. Continue to follow the instructions of the installation wizard. The installation program copies all program files, a device driver, and SIFIT if necessary from the CD-ROM to the hard disk. This may take several minutes. Click "Finish" when complete.
5. Close all programs and exit Windows. Reboot the computer.

Recommended system requirements

Processor (CPU)	2.8 GHz (single-core), 1.8 GHz (dual-core)
Hard-disk space	2.0 GB
RAM	1.0 GB
Graphics display	Resolution 1280 x 1024
Programming interface	NOAHLink
Optical Drives	DVD
Operating system	(32-bit versions only) - Windows XP Pro, Vista, Windows 7
Internet Explorer	6.0
USB interface	2.0

NOAHlink™, NOAH™3 and HIMSA are trademarks or registered trademarks of Hearing Instrument Manufacturers Software Association (HIMSA A/S). USB® is trademark or registered trademark of USB®Implementers Forum, Inc. Windows® 7, Windows® Vista, Windows®XP, Windows Media® Player and Microsoft®Internet Explorer are trademarks or registered trademarks of Microsoft® Corporation. PDF™ and Adobe® are trademarks or registered trademarks of Adobe® Systems Inc. CONNEXX®, UNITY™ and SIFIT™ are trademarks of Siemens Audiologische Technik GmbH. Other brands or labels possibly mentioned here are trademarks or registered trademarks of their owners.

The *Bluetooth*[®] word mark and logos are registered trademarks owned by Bluetooth[®] SIG, Inc., and any use of such marks by Siemens AG is under license. Other trademarks and trade names are those of their respective owners. Copyright © 2010 Siemens Hearing Instruments, Inc. All rights reserved.

Information in this brochure is subject to change without notice. Copyright © 2010 Siemens Hearing Instruments, Inc. All rights reserved.

Global Siemens Healthcare Headquarters

Siemens AG
Healthcare Sector
Henkestrasse 127
91058 Erlangen
Germany
Phone: +49 9131 84 0
www.siemens.com/healthcare

Local Contact Information

Siemens Hearing Instruments, Inc.
P.O. Box 1397
Piscataway, NJ 08855-1397
Phone: (800)766-4500
Fax: (732)562-6696
www.usa.siemens.com/hearing

Legal Manufacturer in Canada
Siemens Hearing Instruments
A Division of Siemens Canada Limited
320 Pinebush Road, Cambridge, ON, N1T 1Z6
Phone: (800)663-0620
Fax: (888)429-4644
www.siemens.ca/hearing

Global Business Unit

Siemens Audiologische Technik GmbH
Gebberstrasse 125
91058 Erlangen
Germany
Phone: +49 9131 308 0