

# RealTime Solutions

## Quality Management - Raising the Bar for Quality Management

### What is the Quality Management Application?

RealTime Solutions Quality Management application provides a simple, more powerful, more efficient way to manage laboratory information -- anytime, anyplace. This internet-based service and support program raises the bar for data management by providing interactive Web-based tools that offer real-time access to data from any standard internet-enabled PC. Quality Management Reports include intuitive and interactive displays that present data from multiple analyzers and multiple laboratory sites.

### How will the Quality Management Application Help Me?

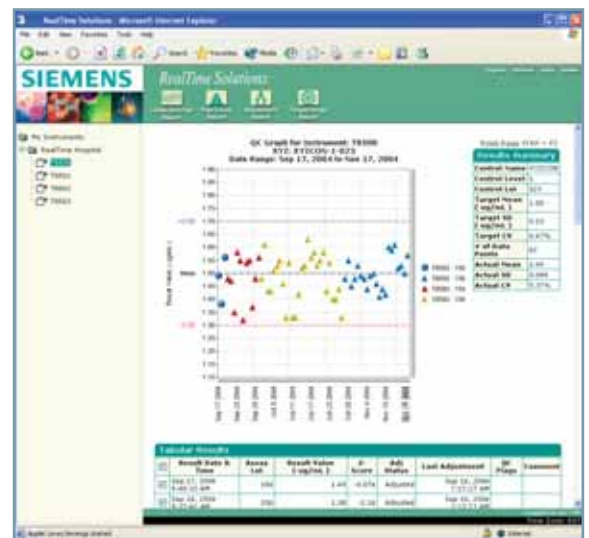
- View QC for selected IMMULITE® instruments together to identify common trends earlier.
- View your Quality Management Report data from anywhere – from the lab, from your desk, or even from home!
- View data from multiple and remote sites, individually or together.
- View instrument QC without interrupting the analyzer and disrupting system operation

- Access Siemens-established quality control target information Quality Management with the assurance that the data is always the most current.
- Have confidence that Siemens is using real-time, real-world data to constantly monitor assay performance

### What Types of Reports are Available?

#### The Levey-Jennings Report

The Levey-Jennings Report is the cornerstone of QC management. It provides an historical view of QC data at a glance for easy identification of trends, bias, and outliers. A statistical summary gives quick feedback on the overall picture, and a tabular report provides the detail on individual QC results. With support for viewing multiple instruments and multiple lots on a single graph, as well as innovative and intuitive display features, Quality Management Reports provide state-of-the-art access to this information.



## Quality Management

Answers for life.

**SIEMENS**

# RealTime Solutions

## The Target Range Report

The Target Range Report puts up-to-the-minute Siemens-validated QC reference values at your fingertips. Rather than searching through control package inserts or calling Technical Service to get the latest update to Siemens' QC target values, just log in to the Siemens RealTime Solutions website to get all the information you need.



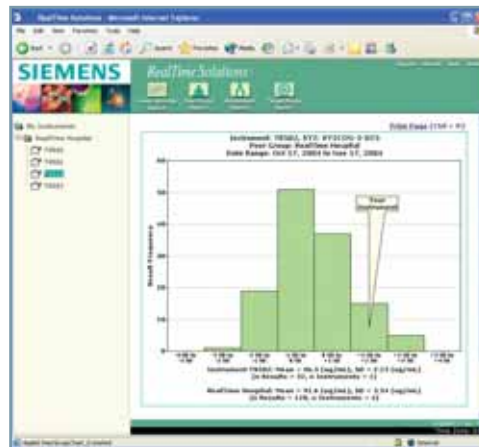
## The Adjustment Report

The Adjustment Report lets you monitor IMMULITE® 2000 and IMMULITE® 2500 adjustments in real time to look for trends and identify potential problems. The Adjustment Report has a graphical display of the historical slopes and intercepts of the assays you run, a concise summary section, and detailed tabular data for each individual adjustment. The report shows adjustments across multiple instruments and lots within your group, all on one page.



## The Peer Group Report

The Peer Group Report is the tool of choice for comparing the performance of an individual instrument or an entire lab to a larger group. Choose the Peer Group Report to display the graphical distribution of QC results for the peer group and pinpoint where your instrument or lab fits into that peer group. Because this is RealTime Solutions, the peer group data are current to the minute, not last month's data.



For more information on RealTime Solutions, please contact your local Siemens Healthcare Diagnostics Sales Representative or visit our website at [www.siemens.com/diagnostics-connect](http://www.siemens.com/diagnostics-connect).

Product availability may vary from country to country and is subject to varying regulatory requirements. Please contact your local representative for availability.

Siemens Healthcare Diagnostics Inc.  
1717 Deerfield Road  
Deerfield, IL 60015-0778  
USA

© 2008, Siemens Healthcare Diagnostics Inc.  
Order No. A91DX-0700787-C2-4A00  
Printed in USA  
IMMULITE, RealTime Solutions and all associated marks are trademarks of Siemens Healthcare Diagnostics Inc. All other trademarks and brands are the property of their respective owners.