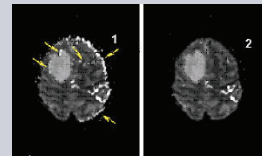
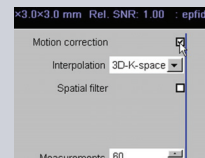
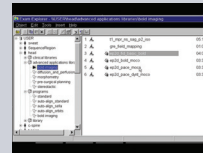


3D PACE

1. Locate a BOLD sequence in the Exam Explorer and go to the BOLD parameter card.
2. When the Motion Correction option is activated, *syngo* motion correction is performed during the calculation.
3. Small patient movements may cause significant artifacts in the functional information. 3D motion correction can reduce relative movements between measured data sets.



Activating 3D PACE for BOLD measurements