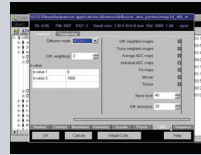
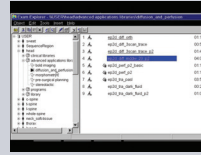


DTI: Diffusion Tensor Imaging

1. The DTI sequence can be found in the Siemens protocol tree in the Head region, then under the advanced applications library, in the diffusion and perfusion program.
2. Select the Diff parameter card to view the current settings for the DTI sequence.
3. The MDDW (Multi-directional diffusion weighting) mode should be selected.
4. The number of Diff. directions is defaulted to 20, however values from 6 to 256 may be used. Note that the higher the number of diffusion directions, the longer the scan time.



DTI Parameter Selections