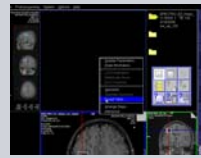
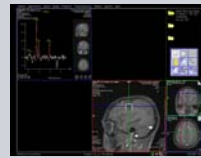
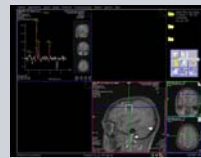


Spectroscopy Evaluation

1. Load the SVS data set into the Spectroscopy application. The metabolite spectrum will automatically be shown in the first segment.
2. Select single data set mode. This will allow for creation of tables in the empty segments.
3. View the localizer. Double clicking on a localizer image puts this image in the large segment.
4. Activate an empty segment and right click select results table. This table will give you a ratio of metabolite integrals, where you select the denominator.
5. Save the results. Activate a segment and select save as, choose "selected results". This can be viewed or sent to PACs from the patient browser.



Single Voxel Spectroscopy (SVS) post processing