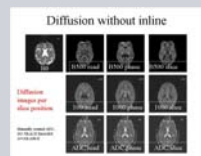
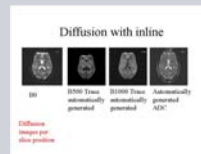


Inline Diffusion

1. Add the epi2d_diff_3scan_trace sequence to the measurement queue. It is located in the exam explorer, advanced applications library, then diffusion and perfusion. Right click the sequence and select Append to Queue.
2. Open the sequence and position.
3. The inline functions are located on the Diff sub task card of the sequence.
4. Ensure that the Trace and Average ADC maps are selected and apply the scan.
5. With inline Diffusion there are 4 images produced per slice position.
6. Without this option, using orthogonal diffusion, there are 10 images per slice position. There are also no Trace images available.



Automatic creation of Trace weighted and ADC maps