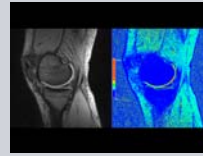
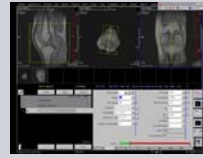
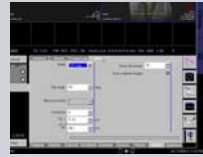
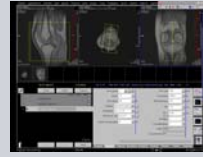


# syngo MapIT

1. Open and position the T2\* map scan. This is found in the Knee, library MapIT section.
2. The MapIT parameters can be found on the Inline, MapIT subtask card.
3. Apply the sequence.
4. The maps and original data can be reviewed in the Viewing Task Card. The T2\* baseline map window level needs to be set to a default value. To set, change the window and center values each to 30.



Creating T2\* maps of the knee