

Fast and flexible

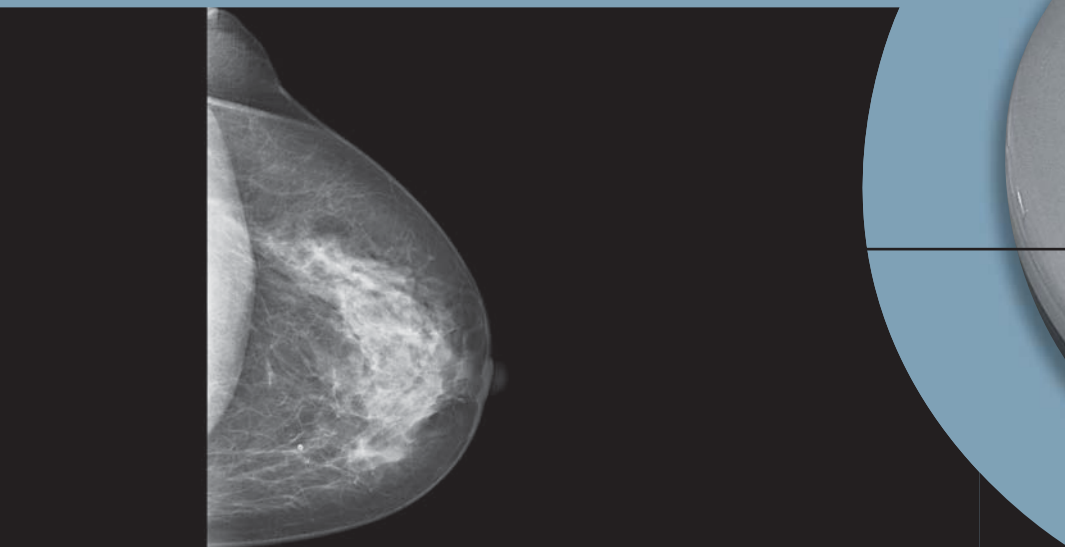
syngo MammoReport

Answers for life.

SIEMENS

syngo MammoReport Fast for screening

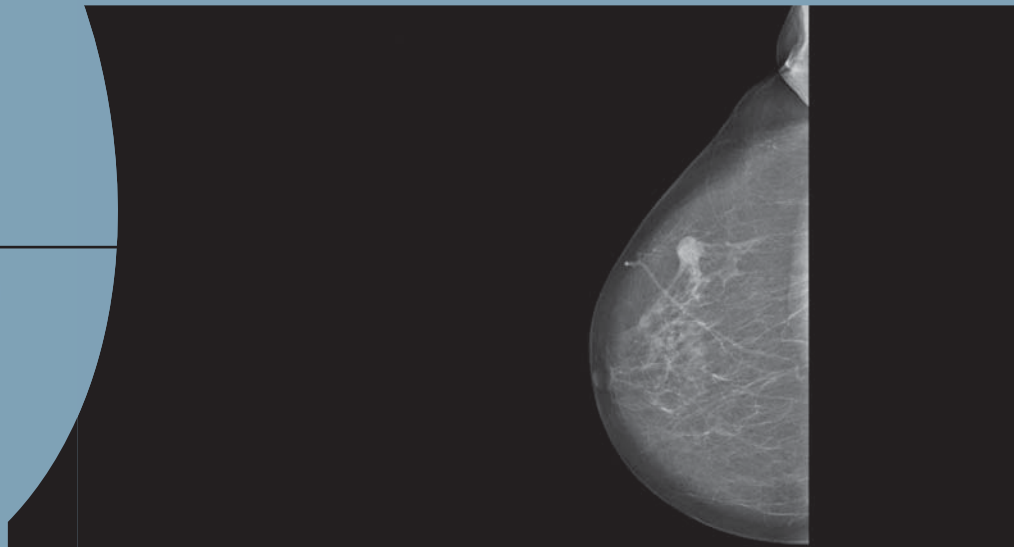
A screening site has specific requirements of a breast care reporting workstation. Because of the high volume of mammography appointments, reading and reporting on syngo MammoReport has to be quick, easy and intuitive – and it is ideally suited for second reading. The special syngo MammoReport keypad indicates with a light, if you are in the screening or diagnostics workflow. In the screening mode you can browse through the reading workflow by just pushing one button. Your images will automatically appear in a pre-configured order to support your mammogram reading. If required, CAD can also be integrated in your reading workflow.



Images: With courtesy of Prof. Dr. Uhlenbrock & Partner, Dortmund, Germany

syngo MammoReport Flexible for diagnostics

syngo MammoReport is designed to make diagnosing as easy as possible for you. Special views like spot, biopsy images, magnification and images from other modalities like MR, PET and Ultrasound can be shown on *syngo* MammoReport. Furthermore, you have the possibility to configure different image impressions and to scroll and compare prior images (even from other vendors) with new ones. The breast care reporting workstation features flexibility for diagnostics – it offers a configurable diagnostic workflow, where you can individually pre-define the order of projections. Dedicated mammography tools like filters, annotation, ruler and magnification ideally support your workflow and help you achieve fast and accurate results.



Just push the center button on the special *syngo* MammoReport keypad to switch immediately between screening and diagnostics workflow.

The Radiologische Institut Hohenzollernstraße in Koblenz, Germany is operating a certified regional mammography screening center, led by Dr. Jochen Schenk. The institute is equipped with a digital MAMMOMAT system, a *syngo* MammoReport and a RIS integration with a screening RIS (Mask). Around 140,000 women between the ages of 50 and 69 live in this region and are entitled to a regular examination. So far, the radiological institute is one of two screening sites operating in this area. Between 50 and 80 women per day have their screening examination done in the Radiologische Institut. To meet the requirements of this high patient volume, Dr. Schenk has chosen the breast care reporting workstation *syngo* MammoReport, and he reports the following good results:

“For me, speed is the crucial advantage of *syngo* MammoReport. To handle our high screening volume the reporting workstation has to support my workflow as well as it possibly can. This is provided by the fast loading of mammograms as well as the easy flipping through the automated hanging protocols. With the additional special keypad I can select certain views with only the push of a button and fast interactive workflow is possible even in darkened rooms.”

“For me, speed is the crucial advantage of *syngo* MammoReport.”

Dr. Jochen Schenk





Screening

Image input,
e.g., from PACS
or modality

Diagnostics



syngo MammoReport Optimized workflow for faster results

Fast reading and reporting

A fast breast care reporting workstation with high image quality is essential for digital mammography – with extremely fast image loading, up to eight images can be called up in less than one second on *syngo* MammoReport.

Easy handling

syngo MammoReport customizes the entire reporting process to your individual requirements. *syngo* software adds a simple, intuitive user interface and powerful networking capabilities to the already exceptional advantages of *syngo* MammoReport.

Hanging protocols

Advanced hanging protocols allow easy viewing of studies with more than four mammogram views, including images from other modalities. Plus, a special workflow-oriented keypad can be customized to include one key touch for the complete reporting process.

syngo MammoReport Optimized connectivity for easy integration

Seamless RIS connectivity

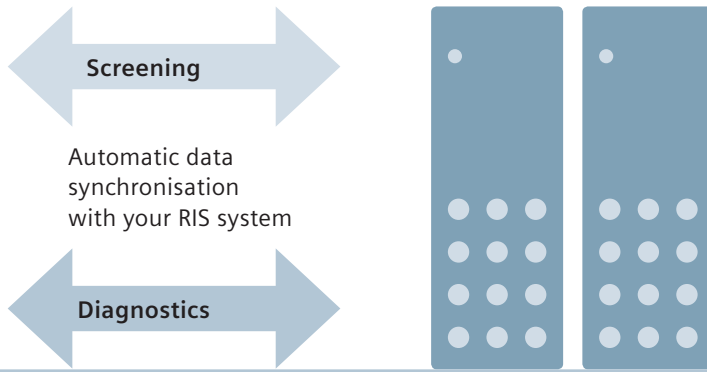
syngo MammoReport can be linked to two or more RIS systems at the same time – another reason why *syngo* MammoReport is ideally suited to support your screening and diagnostic workflow. The breast care reporting workstation can be connected to many RIS systems existing on the market and/or to a specific screening RIS system in your clinical environment. The integration allows image call-up directly from the RIS worklist.

Multi-modality viewing

syngo MammoReport has true multi-modality capabilities to integrate images from other modalities, such as MR and ultrasound, into your clinical workflow. Application packages are available, such as 3D, 3D Fusion (PET/CT) and MR Soft Tissue Evaluation.

Third party and IHE integration

The system is fully compliant with DICOM and fulfils the IHE standards. Therefore, mammograms from third-party mammography vendors can be displayed according to the defined guidelines on *syngo* MammoReport.



Multiple RIS systems (in general two) can be connected to *syngo Mammography*, e.g., one for diagnostics and one for screening

syngo Mammography Optimized breast cancer detection for more security

Sophisticated mammo tools

Multiple magnifying glasses, structured roaming and a panning function allow for full spatial resolution. The Smart Select* feature allows easy and independent access to your favorite tools. When selecting a suspicious area in the first view mammogram, the Corridor of Interest* tool identifies marked lesions in the second view for easier comparison.

Scroll multiple priors

syngo Mammography enables you to scroll through multiple priors. While examining mammograms of a woman, her former images are available at a glance. While the latest mammogram stays in place, the former images can be changed and/or scrolled.

Computer-Aided Detection (CAD)

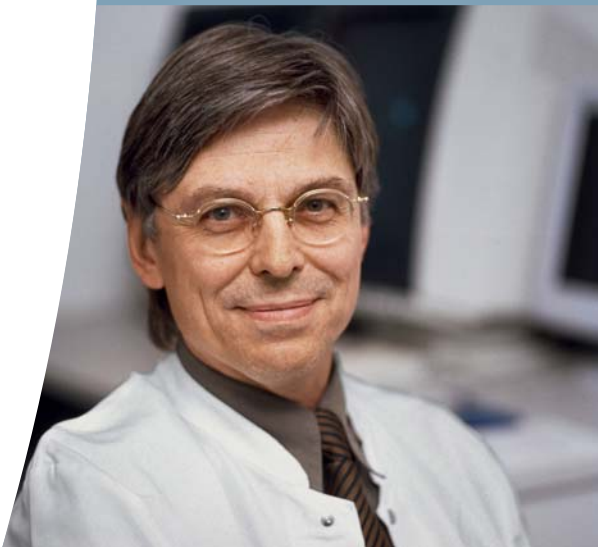
syngo Mammography enables the efficient usage of Siemens *syngo Mammography* CAD**, a computer-aided detection (CAD) software. *syngo Mammography* CAD analyzes images and generates CAD marks to highlight suspicious areas, such as masses and microcalcifications. Additional features include breast density evaluation and “show more, show less,” which customizes the display of CAD markers to a higher or lower sensitivity. The usage of CAD software from other vendors (iCAD and R2 CAD) is also enabled with *syngo Mammography*.

* Optional

** Not available for sale in the U.S.

The Radiology Practice of Prof. Dr. Uhlenbrock & Partner is a dedicated radiology and radiotherapeutic clinic located at the St. Josefs Hospital in Dortmund, Germany. The practice covers the complete range of in-patient medical care for all radiological services. One major focus of the clinic is to provide the finest breast care possible with all relevant modalities, such as MR, PET, 3D ultrasound, and mammography. The practice has two digital MAMMOMAT systems and a *syngo* MammoReport. For Prof. Dr. Uhlenbrock one important factor of a digital breast care reporting workstation is to have previous exams at his disposal. But there are also other features the professor values about *syngo* MammoReport:

“I especially appreciate working with the *syngo* MammoReport breast care workplace. This workstation offers unique processing tools that cannot be found in this form in other breast care workplaces. I can, among other things, set markers, point out regions of interest, write reports and the system offers classification according to BiRads. Apart from that, every doctor can configure his own course of evaluating the mammograms.”



“This workstation offers unique processing tools that cannot be found in this form in other breast care workplaces.”

Prof. Dr. Detlev Uhlenbrock

The information in this document contains general descriptions of the technical options available and may not always apply in individual cases.

The required features should therefore be specified in each individual case at completion of contract. Siemens reserves the right to modify the design and specifications contained herein without prior notice. Please contact your local Siemens sales representative for the most current information.

Original images always lose a certain amount of detail when reproduced.

In the interest of complying with legal requirements concerning the environmental compatibility of our products (protection of natural resources, waste conservation), we recycle certain components. Using the same extensive quality assurance measures as for new components, we guarantee the quality of these recycled components.

Please find fitting accessories:
www.siemens.com/medical-accessories

Local Contact Information

In the USA

Siemens Medical Solutions USA, Inc.
51 Valley Stream Parkway
Malvern, PA 19355-1406 USA
Phone: +1 888 826 9702

In Japan

Siemens-Asahi
Medical Technologies Ltd.
Takanawa Park Tower 14F
3-20-14, Higashi-gotanda
Shinagawa-ku
Tokyo 141-8644
Phone: +81 3 5423 8510

In Asia

Siemens Pte Ltd
The Siemens Center
60 MacPherson Road
Singapore 348615
Phone: +65 6490 8182

In Germany

Siemens AG
Healthcare Sector
Karlheinz-Kaske-Str. 2
91052 Erlangen
Phone: +49 9131 84-0

Global Business Unit

Siemens AG
Medical Solutions
Special Systems
Henkestr. 127
DE-91052 Erlangen
Germany
Phone: +49 9131 84-0

Global Siemens Headquarters

Siemens AG
Wittelsbacherplatz 2
80333 Muenchen
Germany

Global Siemens Healthcare Headquarters

Siemens AG
Healthcare Sector
Henkestr. 127
91052 Erlangen
Germany
Phone: +49 9131 84-0
www.siemens.com/healthcare

Legal Manufacturer

Siemens AG
Wittelsbacherplatz 2
DE-80333 Muenchen
Germany

www.siemens.com/healthcare