



Vibe®

Instruction Manual

**SIEMENS**



# Contents

Introduction . . . . .	1
Your Vibe® hearing instrument . . . . .	2
Getting the most satisfaction from your hearing instruments . . . . .	3
General notes on safety . . . . .	4
Exchanging the housing covers . . . . .	8
Handling batteries . . . . .	9
Inserting and removing hearing instruments	12
Turning your hearing instruments on and off	13
Changing the hearing program . . . . .	14
Domes . . . . .	15
Identification information . . . . .	19
Troubleshooting tips . . . . .	21
Your hearing instrument configuration . . . . .	22



## Introduction

Congratulations on your choice for better hearing with Siemens Vibe hearing instruments.

These instructions as well as guidance from your Audiologist or Hearing Care Provider will help you understand how your Vibe works, and help you get the best performance from your hearing instruments.

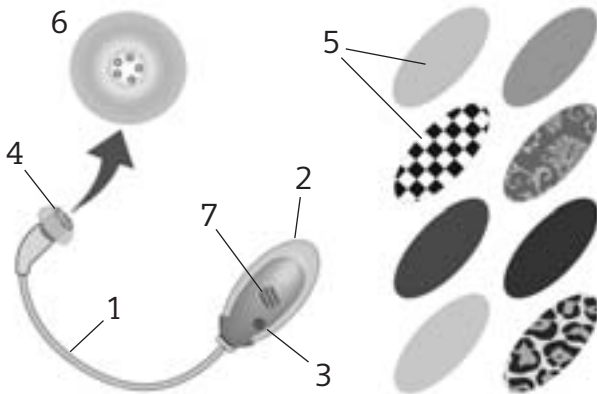
If you have further questions, please contact your Audiologist or Hearing Care Provider.

# Your Vibe hearing instrument

## Features:

- 1 Receiver unit
- 2 Vibe body with battery compartment
- 3 Push button
- 4 Dome with C-Guard®
- 5 Different top covers
- 6 Grid Dome
- 7 Microphone

Your Audiologist or Hearing Care Provider offers an assortment of receiver lengths and dome sizes to best fit your ear.



## Getting the most satisfaction from your hearing instruments

Your satisfaction with hearing instruments depends on proper diagnostic testing, the type and degree of your hearing loss, the fit of your hearing instruments, and your expectations. Of course, no hearing instruments can restore normal hearing, and not everyone will benefit equally.

Your Audiologist or Hearing Care Provider will guide you through the process of fitting and adjusting to your new hearing instruments, and can counsel you regarding the degree of benefit you can realistically expect from hearing instruments. Don't be shy about asking questions or discussing your feelings as you embark on this new experience.

## General notes on safety

### NOTICE

Your hearing instrument is sensitive to extreme heat, high humidity, strong magnetic fields ( $> 0.1\text{T}$ ), X-rays and mechanical stress.

- Do not expose your hearing instrument to extreme temperature or high humidity.
- Do not leave it in direct sunlight.
- Do not wear it in the shower or when you apply make-up, perfume or aftershave, hairspray or suntan lotion.
- Do not wear your hearing instrument when you are exposed to short-waves, a strong magnetic field, a high frequency field or X-rays.

## **WARNING!**

Choking hazard posed by small parts.

- Keep hearing instruments, batteries and accessories out of children's reach.
- If swallowed consult a physician or hospital immediately.
- If infants, small children or mentally disabled persons need to wear hearing instruments, ensure adequate supervision.

## **Battery tips**

### **CAUTION!**

Batteries can be harmful if swallowed.

- If a battery is accidentally swallowed, seek medical attention immediately, or call **The National Button Battery Hotline collect at (202) 625-3333.**
- Always use the battery size recommended on your warranty card or by your Audiologist or Hearing Care Provider for your model for best performance.

- Remove the battery from your instrument when not in use. This prevents possible damage from expansion or leakage of the battery, if the instrument is not fully turned off.
- Always carry spare batteries in the event that your current battery goes dead. Place each spare battery in an individual, non-metallic container to prevent contact with other batteries or metal objects, such as keys or coins.
- Follow your local recycling rules for battery disposal.

*Note: Do not throw used batteries into household trash. Return them to your Audiologist or Hearing Care Provider for environmentally correct disposal.*

**WARNING:** Risk in explosive environments, e.g. mining areas!

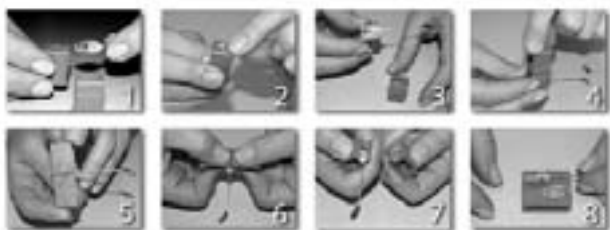
- Don't use your hearing instruments in areas where there is a danger of explosions.

## **CAUTION!**

Risk of injury caused by incorrect use of domes.  
Always wear the receiver unit with dome.

- Make sure that the dome is completely attached to the receiver unit.
- If the dome remains in your ear, have it removed by a medical professional.
- Replace the dome if it breaks.
- Insert the receiver unit with the dome carefully and not too deeply into the ear.
- Use the receiver unit and dome only in the manner described in this user guide.

## Exchanging the housing covers



### Exchanging the housing covers.

With an expanding range of snap-on color options, Vibe lets you express yourself any way you choose.

### Changing Vibe is a snap.

1. Using the handling tool (included in the Vibe case) grasp Vibe firmly with both hands.
2. Pull gently to separate Vibe cover in half.  
Replace top half with a new color or pattern.
3. Gently push the two halves together with handling tool.
4. You may also simply use your fingers to snap the new cover on the Vibe body.

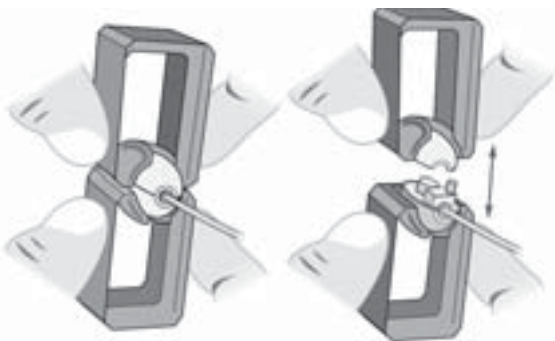
## Handling batteries

- Use standard batteries in your hearing instruments.
- Always use size 10 batteries.
- Remove the tab on your batteries only when you are ready to use them.
- The positive (+) side of the batteries is always the smooth side.
- Always keep spare batteries with you.

### **Low battery indicator**

Your hearing instrument may be programmed to inform you when the battery should be replaced for best performance. If this feature is activated in your hearing instruments, you may hear two long, low pitched beeps and/or experience low amplification power or volume. Change the battery immediately when either of these occur.

## Opening the top cover



*Fig. 1: Opening the top cover*

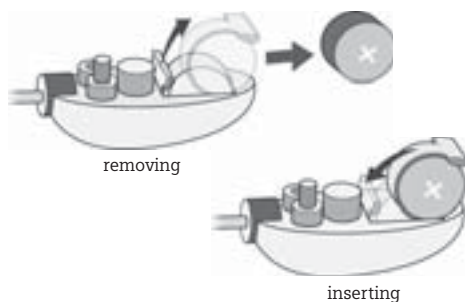
### **CAUTION!**

Small parts can easily fall down and get lost.  
Work on a table.

- Place the Vibe body on the bottom of the tool.
- Place the second part of the handling tool on top of the Vibe body.
- Use the tool as you would tweezers to grip where the top and the bottom covers come together.
- Pull the top and bottom covers of the Vibe carefully apart (Fig. 1).

## Removing old battery

- Carefully pull on the battery-handle until the battery slips out of the Vibe body (Fig. 2).
- Do not throw used batteries into household trash. Return them to your Audiologist or Hearing Care Provider for environmentally correct disposal.



*Fig. 2: Removing and inserting batteries*

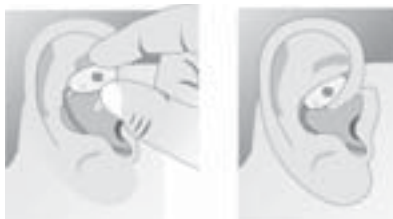
## Inserting new battery

- Insert a new battery using the correct polarity.

## Putting the cover back on

- You can use the tool to replace the cover or it may be easier to use your fingers to snap the cover into place (Fig. 1).

## Inserting and removing hearing instruments



*Fig. 3: Inserting the hearing instrument*

### Inserting

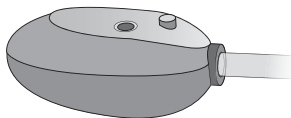
- Hold the Vibe with the push button side facing outward.
- Insert the receiver with dome at the beginning of your ear canal. Don't insert it too deeply.
- Twist the Vibe slightly upwards and put the tip of the body into the cymba portion of the ear as shown in diagram (Fig. 3). The push button should be facing outward. If necessary use a mirror to check the placement of Vibe.

### Removing

- Remove the body of Vibe from your cymba.

- Carefully pull the receiver and dome out of your ear canal.

## Turning your hearing instruments on and off



*Fig. 4: Turning your hearing instrument on and off*

### **Turn on:**

- Press the push button for about 3 seconds to turn the instrument ON.

### **Turn off:**

- Press the push button for about 3 seconds to turn the instrument OFF.

### **Power-on delay**

Your hearing instrument maybe equipped with a “power-on delay” feature which can be activated by your Audiologist or Hearing Care Provider. This allows you to turn the hearing instrument on with an automatic delay of 6, 12 or 18 seconds, so that you may insert the hearing instrument into your ear without experiencing unpleasant feedback (whistling).

Check with your Audiologist or Hearing Care Provider to see if this feature is enabled.

## Changing the hearing program

*Fig. 5: Changing the hearing program*

Your hearing instruments offers up to 4 hearing programs for specific listening environments. These will be programmed by your Audiologist or Hearing Care Provider.

Each time you press the program button, your hearing instruments switch to the next program, confirming each change with an acoustic signal (if programmed this way by your Audiologist or Hearing Care Provider).

Your Audiologist or Hearing Care Provider can record the personal program configuration of your hearing instruments on page 22.

Your Audiologist or Hearing Care Provider can activate or deactivate the acoustic signals in your hearing instruments.

## Domes

Your hearing instrument has a dome that connects to the receiver, and some domes may contain the C-Guard.

- Have the domes exchanged approximately every three months, or sooner if damaged or broken.

### Daily cleaning

*Note: Domes can be damaged when handled incorrectly.*

- Never use brushes or sharp objects for cleaning.
- Never use running water or immerse the hearing instrument.
- Never use pressure or rotating action while cleaning.
- Don't spray cerumen solvent directly onto the Dome.

*Fig. 6: Cleaning hearing device*

Cerumen (ear wax) on the Dome affects sound quality.

- Remove wax with a soft tissue or cloth only. No other tools are required (Fig. 6).
- The dome cleans best right after taking the hearing instruments off. This way cerumen can not dry and harden.
- If there is dried cerumen on the Dome moisten the soft tissue with a cerumen solvent.
- Dab the end of the Dome with the moistened tissue and wait a short period of time, this will loosen the cerumen.

*Fig. 7: Replacing domes*

**Replacement of domes** (Dome with C-Guard or Grid Domes)

- Holding the receiver unit in one hand, grasp the dome between the thumb and index finger of your other hand.
- Remove the dome from the receiver. The new dome is delivered in a box.
- Leave the dome in the box and press the tip of the receiver unit into the new dome as shown in the picture (Fig. 7).

The mark on the receiver unit helps you to position it correctly.

The dome is in the correct position when it is in line with the mark around the entire diameter of the receiver.

If the dome is not mounted correctly the sound quality will be affected and or it could loosen from the receiver.

- If this is the case check and readjust the dome.
- Change the domes approximately every three months, or as needed.

### **CAUTION!**

Risk of injury caused by incorrect use of domes.

- Do not place the receiver into your ear without a dome.
- If the dome gets detached in your ear, consult your Audiologist or Hearing Care Provider, a physician, or hospital.

## Identification information

Your hearing instruments have a serial number engraved on them. The location of the serial number will vary according to the style of hearing instrument you have chosen.

The year of manufacture is incorporated into the serial number. Please note the warranty is based upon the date of purchase, not the date of manufacture.

The serial number may look similar to this sample: CS25598 (Fig. 8). The second letter of this serial number refers to the year of manufacture of the hearing instrument. The letters S or T indicate a 2008 year of manufacture. Your Audiologist or Hearing Care Provider can answer any questions you may have about the identifying code on your hearing instrument.

Record the serial numbers of each instrument in the space provided for future reference.

**Serial numbers:**

Left ear: \_\_\_\_\_

Right ear: \_\_\_\_\_

*Fig. 8: Identification information*

## Troubleshooting tips

Your Vibe hearing instruments are reliable devices. Should a problem occur, it can usually be corrected by following these troubleshooting tips.

Hearing instrument		
LEFT		RIGHT
	Model	
	Serial number	
10	Battery	10
<input type="checkbox"/> yes <input type="checkbox"/> no	Power on delay	<input type="checkbox"/> yes <input type="checkbox"/> no
<input checked="" type="checkbox"/> yes <input type="checkbox"/> no	Memory button	<input checked="" type="checkbox"/> yes <input type="checkbox"/> no
Signal tones		
<input type="checkbox"/> on <input type="checkbox"/> off	Low battery warning	<input type="checkbox"/> on <input type="checkbox"/> off

Hearing program	Description of the hearing program
1	
2	
3	
4	
5	

If you have any of these problems, contact your Hearing Care Provider.



Your Audiologist or Hearing Care Provider:

**Siemens Hearing Instruments, Inc.**

P.O. Box 1397

Piscataway, NJ 08855-1397

**[www.usa.siemens.com/hearing](http://www.usa.siemens.com/hearing)**

Information in this manual subject to change without notice.  
Copyright © 2008 Siemens Hearing Instruments, Inc. All Rights Reserved

10294691 2/09 2.1 22C108 1K  
SHI/10043-9