



What can you expect from
a partner that delivers
innovations for over 130 years?

The Bluetooth® word mark and logos are owned by the Bluetooth SIG, Inc., and any use of such marks by Siemens AG is under license. Other trademarks and trade names are those of their respective owners.

Information in this brochure is subject to change without notice. Copyright © 2009 Siemens Hearing Instruments, Inc. All rights reserved.

Global Siemens Headquarters

Siemens AG
Wittelsbacherplatz 2
80333 Muenchen
Germany

Global Business Unit

Siemens Audiologische Technik GmbH
Gebbertstrasse 125
91058 Erlangen
Germany
Phone: +49 9131 308 0

Global Siemens Healthcare Headquarters

Siemens AG
Healthcare Sector
Henkestrasse 127
91052 Erlangen
Germany
Phone: +49 9131 84 0
www.siemens.com/healthcare

Local Contact Information

Siemens Hearing Instruments, Inc.
P.O. Box 1397
Piscataway, NJ 08855-1397
Phone: (800) 766-4500
Fax: (732) 562-6696
www.usa.siemens.com/hearing

Siemens Hearing Instruments
A Division of Siemens Canada Limited
320 Pinebush Road, Cambridge, ON, N1T 1Z6
Phone: (800) 663-0620
Fax: (888) 429-4644
www.siemens.ca/hearing

Legal Manufacturer

Siemens Audiologische Technik GmbH
Gebbertstrasse 125
DE-91058 Erlangen
Germany

www.siemens.com/hearing

102XXXXX 11/09 1.0 22P208 XK
SHI/10793-9

The new CONNEXX 6.3 – the fitting program
for superior customer satisfaction.

Answers for life.

SIEMENS



Listening to your needs.

Being a professional, you know that only by listening to your customers you can understand their challenges and requirements, and respond with specialized and unique solutions. That's also how we see things. And with our 130 years of experience, we've learned a lot about your needs.

Thus, with the redesign of the popular CONNEXX™ software, we have incorporated your latest suggestions and requirements as well. You asked for support, and the new CONNEXX 6.3 delivers. The optimized fitting process of this innovative program provides you with ideal sales support, concentrating on three simple but essential aspects: seeing, understanding, and satisfaction. Everything you need to support your fitting process, and your customer.

We also realize that providing your customers with improved service shouldn't mean that you work harder. So we have also made this sophisticated new program simple to use. It works with a PC in a Microsoft® Windows® environment, and uses the industry standards HI-PRO, and NOAH Link hardware. Moreover, CONNEXX is intuitive and works independently, or in conjunction with NOAH and all other Siemens modules. So all you have to concentrate on is your customer.

Discover how the new CONNEXX 6.3 platform benefits not only your customers, but also you.

What you see is what you hear.

Real Time Display makes hearing solutions visible.

What is my hearing instrument really doing? How do the various instrument features work? Your customers have many valid questions regarding their hearing instruments.

Now you have a simple answer. Real Time Display is a live demonstration of hearing instrument features*. It is designed to support your counseling process by enabling you to visually explain the most important instrument features to your patients: Audibility, Noise Reduction, and Adaptive Directional Microphone. This not only allows them to understand how these features work, but also how they help.

With Real Time Display, customers can clearly see the value of a device you recommend to them. New features are not just abstract programs, but rather tangible improvements to their hearing. This increases trust in the hearing instrument, and consequently supports their acceptance.

The Real Time Display feature is available with Siemens 700 series products and can be launched either by using the icon or under the View Main Menu selection.



Look for the Real Time Display icon.



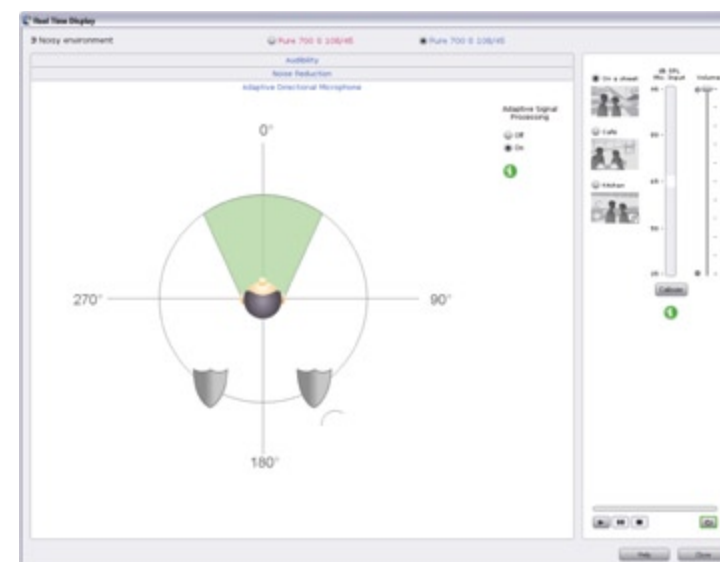
Or, under the View menu, choose Real Time Display.



Audibility: real output level in each channel, detects current hearing situation.



Noise Reduction: real amount of gain reduction for each channel.



Adaptive Directional Microphone: detects and eliminates unwanted noises from behind.

*only available with 700 series products

Understanding how hearing loss sounds.

Hearing Loss Simulator helps relatives and friends understand hearing impairment.

Your patient's relatives and friends are important influencers in the decision for a hearing instrument. That's why we have incorporated the Hearing Loss Simulator into the new CONNEXX platform.

Hearing Loss Simulator allows them to experience your customer's hearing impairment. It can use the patient's actual audiogram data, or select from a number of pre-defined standards representing typical hearing losses. This helps them gain a clearer understanding of your patient's hearing impairment, so they can actively support the decision process for a hearing instrument.

And since your time with your patient is valuable, Hearing Loss Simulator is activated through CONNEXX at the click of a button. Because it's easy to use, means it's easy to explain.

The hearing loss simulator uses the patient's actual audiogram data or selects from a number of pre-defined audiograms representing typical hearing losses.

Relatives or friends can now hear how the impaired hears: they can now support the decision process for a hearing instrument and they better understand the hearing impairment.



Satisfaction from the first impression.

New ConnexxFit for open fittings ensures an ideal start.

ConnexxFit™ is designed to provide an ideal starting point for the fitting process by automatically selecting the most appropriate target gain and signal processing parameters (e.g. compression time constants, setting of FeedbackBlocker etc.). This is achieved by a holistic analysis of the patient's hearing loss (configuration, degree), acoustic coupling (vent size, type of dome and tip), and signal processing capabilities of the selected hearing instrument.

The highlight of the new ConnexxFit is that it optimizes open fittings for moderate sloping hearing losses to yield a perfect balance of feedback stability, speech

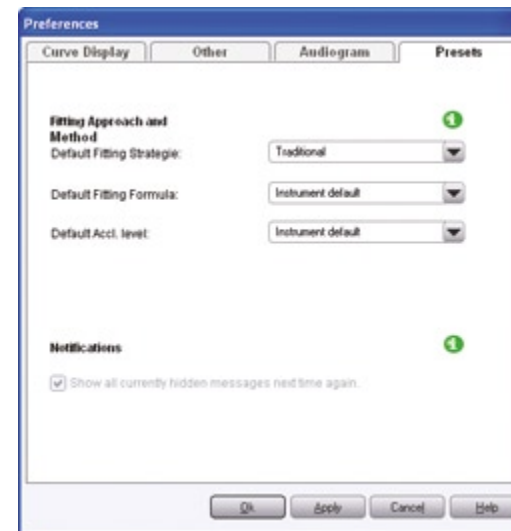
understanding, and sound quality. For instance, ConnexxFit automatically activates the "Open Optimizer", a new signal processing feature, to significantly improve the effectiveness of the FeedbackBlocker in open fittings.

The result is better speech intelligibility and sound quality, less feedback, and a better sound of the patient's own voice. Simply put, a perfect first fit that means greater patient satisfaction from the start. ConnexxFit ensures a positive introduction to your patient's hearing instruments.

And as we all know, first impressions last.

First Fit Improvements

First Fit preset To reduce the time of performing a First Fitting of hearing instruments CONNEXX 6.3 now offers the ability to preset the default fitting strategy, fitting formula, and acclimatization level for StandardFit fittings. By setting preset values in the Preferences dialog the First Fit Navigator will utilize these values for hearing instruments that support these presets, otherwise CONNEXX will default to values based on the hearing instrument detected.

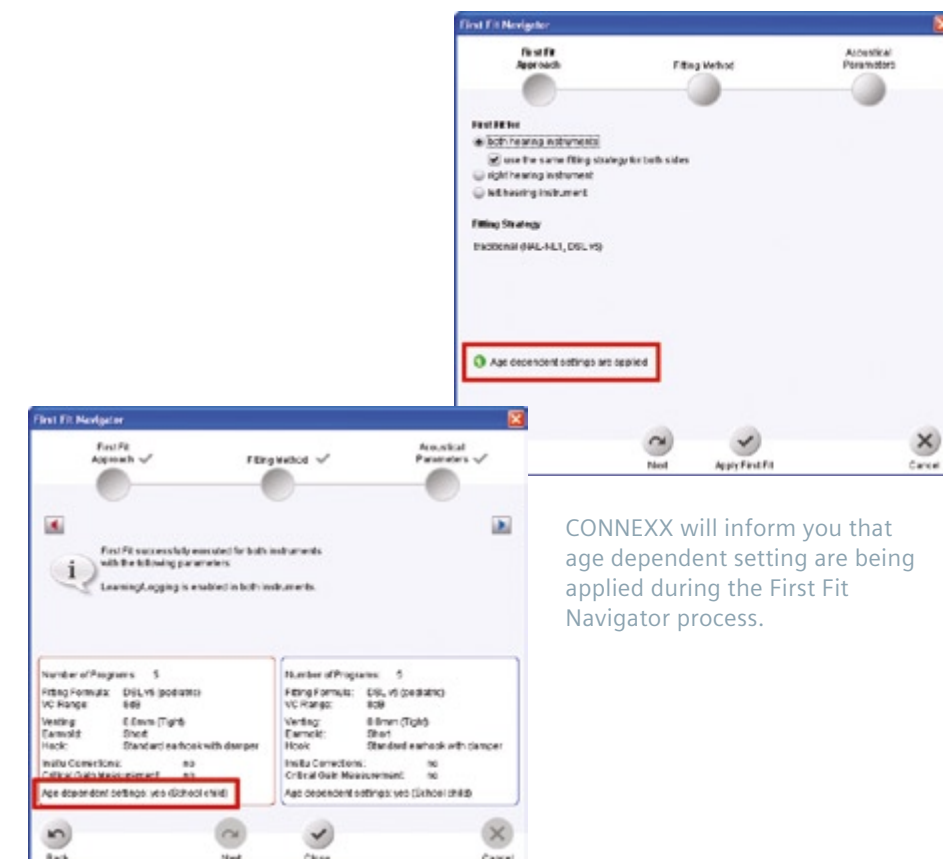


Age dependent First Fit The ClinicalFit fitting mode has also been improved to better meet the needs of patients in different age groups. CONNEXX 6.3 offers dedicated First Fit settings dependent on the patient's age. The different age groups are defined as follows:

- Babies – up to 3 years
- Toddlers – from 3 to 6 years
- School children – from 6 to 11 years
- Teenagers – from 11 to 16 years
- Adults – from 16 years on

When fitting pediatric hearing instruments (Explorer 500 P, 500M and 100M; Nitro 700 SP and 300 SP) CONNEXX will configure the instruments as shown in the chart below:

Age Group	Baby	Toddler	School children	Teenager	Adult
Number of programs	1	1	5	5	5
Program 1	Universal	Universal	Universal	Universal	Universal
Program 2	-	-	Noisy environment / Bluetooth® Phone	Noisy environment / Bluetooth® Phone	Noisy environment / Bluetooth® Phone
Program 3	-	-	Autophone® / Tek® TV / Music	Autophone® / Tek® TV / Music	Autophone® / Tek® TV / Music
Program 4	-	-	Music / Noisy environment	Music / Noisy environment	Music / Noisy environment
Program 5	-	-	Speech activated FM	Speech activated FM	Speech activated FM
Speech activated t-coil	×	✓	✓	✓	✓
Speech and Noise Mgmt.	×	medium	medium	medium	medium
SoundSmoothing®	×	×	×	medium	medium
Volume Control	×	×	✓	✓	✓
Pushbutton	×	×	✓	✓	✓
DataLearning® / SoundLearning®	×	×	×	✓	✓
SoundBoost	×	×	×	✓	✓
LED	✓	✓	×	×	×
Signal tones	×	✓	✓	✓	✓

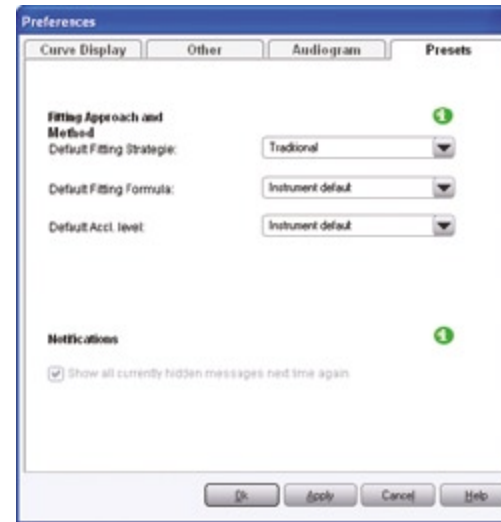


CONNEXX will inform you that age dependent setting are being applied during the First Fit Navigator process.

General Improvements

Dialogs not shown

To improve the CONNEXX experience a number of warning dialogs have the option to not be displayed. This reduces the number of mouse clicks to perform tasks. These warning can be turned off/on in the Preference settings.



Program Remote Reminder

In cases where a Tek Connect remote control is involved with the fitting, a friendly reminder appears when closing the session if the Tek Connect needs programming as well.



VC Coupling

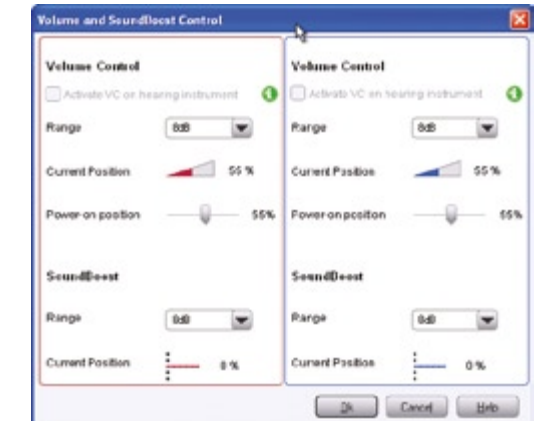
For instruments supporting stop-end volume controls and the ability to assign an active volume control (Nitro 700SP, Nitro 300 SP), CONNEXX provide loudness coupling via e2e 2.0. One instrument is assigned as the active volume control and the other instrument's volume is set via the e2e wireless function. When a remote control is activated both volume controls on the instrument will be disabled.



Nitro SP Features

CONNEXX 6.3 introduces the Nitro SP instruments which offers the following new features:

SoundBalance SP – Ability to increase/decrease bass in lower frequency bands via Tek Connect for more loudness and better speech intelligibility.



Enabling/disabling LED light on the hearing instrument.

