

# Clinical Results - Cardiac

## Atrial Fibrillation (non-gated)

### Patient History

male, 57 years, 107 kg  
sinus rhythm during image acquisition.

### Diagnosis

Atrial Fibrillation

### Comments

The 3D image was generated by single 5 sec rotational C-arm angiography during selective contrast injection (15.5 ml/sec) into the pulmonary artery (5 sec X-ray delay).

*syngo* InSpace EP was used to extract the surface of the left atrial morphology.

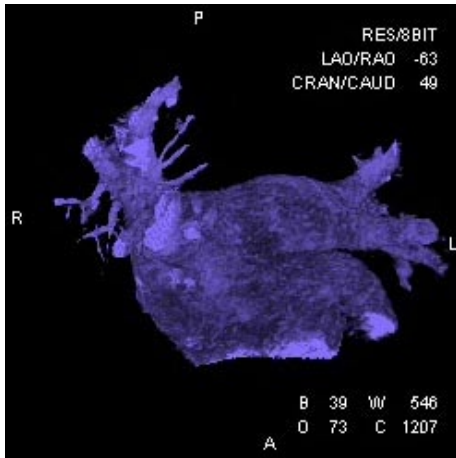
***syngo* DynaCT Cardiac**

A new perspective in electrophysiology

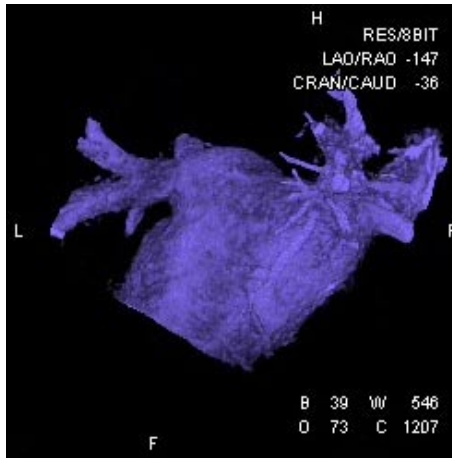
[www.siemens.com/medical](http://www.siemens.com/medical)

**SIEMENS**  
medical

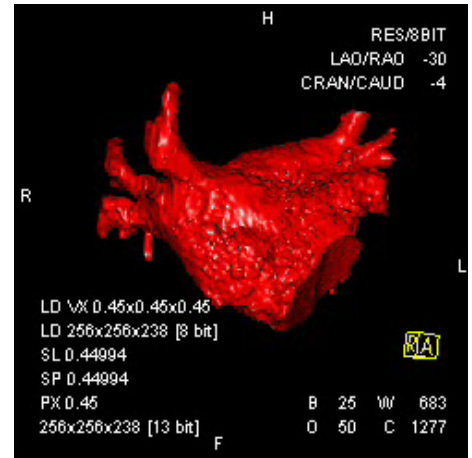
# Case Images and Movies



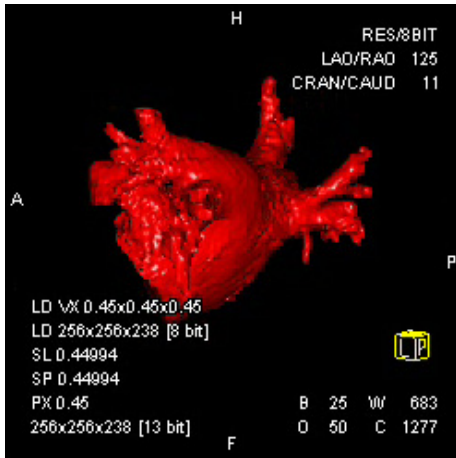
Moviestill: VRT image of LA



Moviestill: VRT image of LA



Moviestill: syngo InSpace EP - segmentation of LA



Moviestill: syngo InSpace EP - segmentation of LA

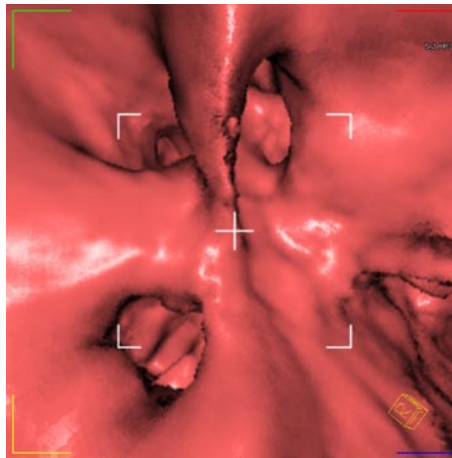


Image: syngo InSpace EP - Fly through LA

Images are courtesy of Cleveland Clinic Foundation, Dr. Natale

**syngo DynaCT** SIEMENS

Cross-sectional imaging. Setting the trend in interventional.

Home | Why syngoDynaCT? | Download | How to work | Products | Further information | Contact | FAQ



syngo DynaCT enhances your diagnostic and therapeutic capabilities in the interventional suite by enabling you to acquire full-body images with your AECG. Add large detector systems not available with X-DRG and DRF.

Improved patient management during interventional procedures by:

- Enhancing decision-making with additional software information
- Virtually avoiding patient transfer to CT

For more case images and movies visit the syngo DynaCT Website at:

[www.siemens.com/DynaCT](http://www.siemens.com/DynaCT)

The information in this document contains general descriptions of the technical options available, and may not always apply in individual cases.

The required features should therefore be specified in each individual case at completion of contract.

Siemens reserves the right to modify the design and specifications contained herein without prior notice. Please contact your local Siemens sales representative for the most current information.

Original images always lose certain amount of detail when reproduced.

In the interest of complying with legal requirements concerning the environmental compatibility of our products (protection of natural resources and waste conservation), we recycle certain components. Using the same extensive quality assurance measures as for factory-new components, we guarantee the quality of these recycled components.

© 2006, Siemens AG

Siemens AG  
Wittelsbacherplatz 2  
D-80333 Muenchen  
Germany

**Headquarters**

Siemens AG, Medical Solutions  
Henkestr. 127, D-91052 Erlangen  
Germany  
Telephone: +49 9131 84-0  
[www.siemens.com/medical](http://www.siemens.com/medical)

**Contact Address**

Siemens AG, Medical Solutions  
Angiography, Fluoroscopic and  
Radiographic Systems  
Siemensstr. 1, D-91301 Forchheim  
Germany  
Telephone: +49 9191 18-0