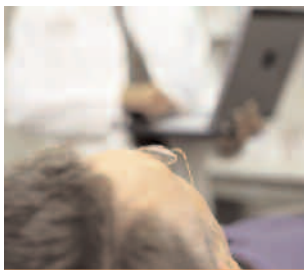


Soarian Quality Measures Powered by REMIND
Automated Chart Abstraction for Healthcare
Quality Measures

REMININD

It's all about improving healthcare outcomes.

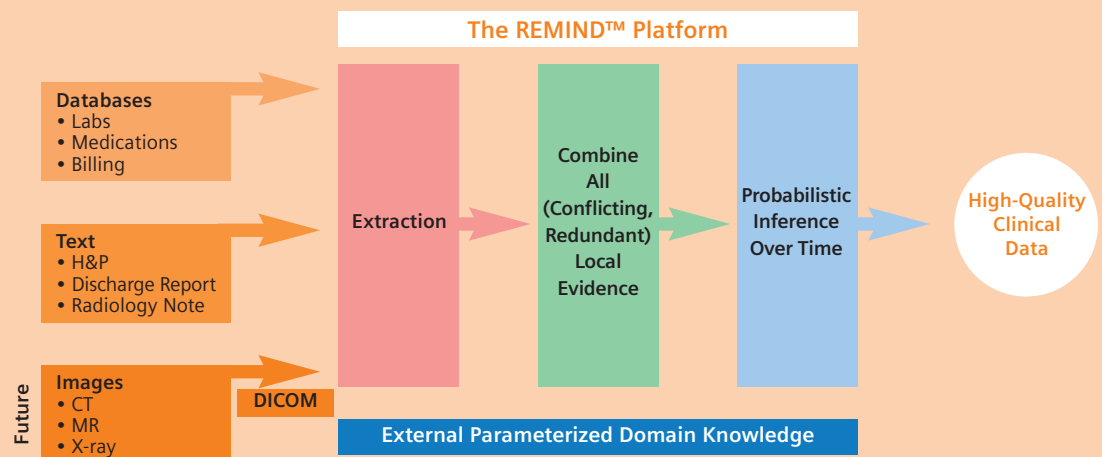
Healthcare providers, often serving hundreds of thousands of patients, are striving to ensure that every patient receives the best quality of care possible. Care that is based on the most current clinical guidelines and medical evidence. Hospital quality measures are a valuable tool to analyze, report, and help improve quality of care. While patient data is increasingly available in electronic patient records, data collection required to comply with quality reporting structures is time consuming and often prone to errors. Often, manual chart reviews by a nurse or quality manager are required to perform the actual review. This process can now be optimized using a revolutionary new technology for automated chart abstraction.



Automated chart abstraction. Creating a new paradigm for quality.

Soarian Quality Measures is a suite of data analysis options designed to extract quality measures from electronic patient records. It represents a fundamentally new approach to the reporting of quality measures by providing automated chart abstraction for CMS, JCAHO and other quality measures. Based on the retrospective analysis of all available patient records, Soarian Quality Measures identifies patients to be abstracted for the reporting period. It then extracts the indicators and pre-populates the answers to the individual measures on which they are based. Soarian Quality Measures is available through either in-house or Application Services Provider (ASP) delivery. It works without requiring changes in the way healthcare data are collected. Soarian Quality Measures enables you to know more. Sooner. For all patients.

Reliable Extraction & Meaningful Inference from Nonstructured Data



A new level of data analysis and accuracy powered by REMIND™.

Soarian Quality Measures is based on the patented award winning REMIND technology that includes natural language processing, data combination and probabilistic inference. Connecting to both Siemens and non-Siemens data sources, REMIND searches through all patient records analyzing information in unstructured and structured data sources. The analysis covers free text in the entire patient record, including discharge notes, progress notes, and other documents containing structured data like billing information and demographics. After data extraction, REMIND combines local information based on learned medical domain knowledge and performs probabilistic inference to obtain high-quality medical information. Leveraging the natural redundancies in medical records, REMIND applies probabilistic reasoning to deal with missing or inconsistent pieces of information. That's the power of REMIND. Incredible accuracy.

More information and more time to focus on improving care.

Soarian Quality Measures allows you to focus on improving the quality of care rather than spending time on searching and extracting data. The Soarian Quality Measures solution includes a viewing application that supports reviewing, correcting, verifying and reporting chart abstractions. Due to pre-populated quality measures and direct links to extracted data, Soarian Quality Measures makes it fast and easy to review results. Soarian Quality Measures pinpoints the information which may otherwise require searching the entire patient chart. It works together with you, empowering you to find information, while at the same time giving you full control over the review process and results. Instead of tedious abstraction, the time is now available to understand and improve quality of care.

Benefits

- Allows focus to switch from measuring quality of care to improving quality of care
- Improve productivity through automated chart abstraction
- Prepares you for pay for performance
- Leverages data available in existing Health Information System (HIS)
- Improves review accuracy by displaying available documents in a consistent manner
- Adapts easily to changes in various quality measures

Features

- Performs automated high quality, chart abstraction for quality measures as defined by JCAHO, CMS HQA, and others
- Uses available data including, free text and structured data
- Allows users to easily review, validate, update, and export chart abstractions
- Can combine data from both Siemens and non-Siemens sources
- Available in-house or ASP

For more information on Soarian Quality Measures, contact your Siemens representative or call 1-888-826-9702.

On account of certain regional limitations of sales rights and service availability, we cannot guarantee that all products included in this brochure are available through the Siemens sales organization worldwide. Availability and packaging may vary by country and is subject to change without prior notice. Some/All of the features and products described herein may not be available in the United States.

The information in this document contains general technical descriptions of specifications and options as well as standard and optional features which do not always have to be present in individual cases.

Siemens reserves the right to modify the design, packaging, specifications and options described herein without prior notice. Please contact your local Siemens sales representative for the most current information.

Note: Any technical data contained in this document may vary within defined tolerances. Original images always lose a certain amount of detail when reproduced.

Siemens Medical Solutions
Health Services Corporation
51 Valley Stream Parkway
Malvern, PA 19355-1406 USA

Headquarters

Siemens Medical Solutions USA
51 Valley Stream Parkway
Malvern, PA 19355-1406 USA
Telephone: +1-888-826-9702
www.usa.siemens.com/medical

Siemens **Medical**
Solutions that help