

date time

Doctor's stamp

This leaflet is provided as an information service of Siemens AG, Healthcare Sector.

Important: Precautions

MR is a non-invasive and safe test. As MR works with a strong magnet and radio waves, you need to tell us, if anything of the following applies to you or the person that accompanies you into the exam room:

- Aneurysm clip(s)
- Cardiac pacemaker
- Implanted cardioverter defibrillator (ICD)
- Electronic implant or device
- Magnetically-activated implant or device
- Neurostimulation system
- Spinal cord stimulator
- Cochlear implant or implanted hearing aid
- Insulin or infusion pump
- Implanted drug infusion device
- Any type of prosthesis or implant
- Artificial or prosthetic limb
- Any metallic fragment or foreign body
- Any external or internal metallic object
- Hearing aid

Any metallic substance on your person can affect the quality of the diagnostic images. It can also cause discomfort or even injury to you when placed into the magnetic field.

Also, tell us if you are pregnant!

Finding out the Results

The radiologist will study your examination and will give the report to your doctor. Then your doctor will discuss the results with you and explain what they mean in relation to your health. Results cannot be given directly to the patient or family.

A patient's step by step guide to Magnetic Resonance Imaging





What is an MRI scan?

Magnetic resonance imaging (MRI) is a method of looking inside the body. Instead of x-rays, the MRI scanner uses magnetism and radio waves to produce remarkably clear pictures of your head, spine, or other parts of your body. An MRI scanner consists of a strong magnet with a radio transmitter and receiver. These instruments gather the information out of your body. MRI produces soft-tissue images and is used to distinguish normal, healthy soft tissue from pathologic tissue.

Depending on what information your doctor needs, the MRI scan may require the use of a contrast-agent given intravenously to assist in visualization of certain structures in your body.



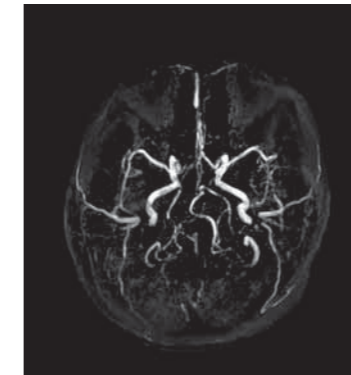
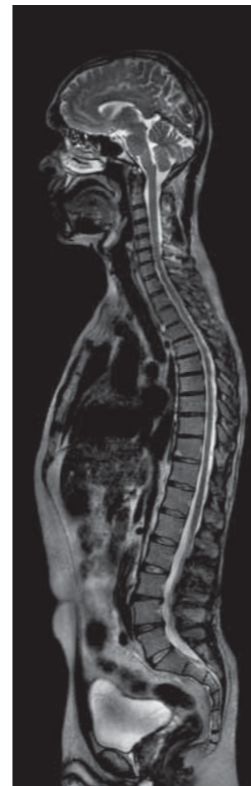
Preparing for an MRI

No special preparation is needed prior to the exam, unless your doctor has given you other instructions. You will be asked to complete a safety screening form and answer questions pertaining to your medical history.

Please wear loose clothing without zippers or metallic parts.

Remove all:

- jewelry
- watches
- hairpins
- glasses
- wallets
- and other metallic objects



What happens during an MRI Scan?

After you have removed all metal objects, the technologist will position you on a special table, and the table will then slide into the scanner. MAGNETOM Avanto's feet-first functionality allows that your head stays outside the magnet bore during most examinations – with the exception of head or neck scans of course. Anyway you will be able to communicate with the technologist during the scan.

For clear pictures, you will be asked to hold very still and relax. In some cases, you will be asked to hold your breath. Any movement, especially of your head or back (even moving your jaw to talk) during the scan will seriously blur the pictures. While the machine is taking your pictures, you will hear rapidly repeating, thumping noises coming from the walls of the scanner. As MAGNETOM Avanto features AudioComfort the acoustical noise is already reduced by 97% as compared to conventional systems. For additional comfort earplugs may be provided. During this time, you should breathe quietly and normally but otherwise refrain from any movement, coughing or wiggling. When the thumping noise stops, you must refrain from changing your position or moving about.

This whole procedure will usually be repeated several times, and the entire exam ordinarily takes between 15 and 30 minutes to complete.