

**SIEMENS**



[www.siemens.com/skyra](http://www.siemens.com/skyra)

# MAGNETOM Skyra

Transforming 3T productivity.

Answers for life.



## We're talking profound change

The driving mandate across all of healthcare today is the need to deliver better outcomes at a lower cost. It's clear that technology innovation will play an enormous role in making the promise – and the requirement – of efficient, affordable, high quality care, a lasting reality.

MAGNETOM® Skyra, the first 70 cm Tim+Dot system is a breakthrough advancement in 3T imaging that will significantly increase your productivity by up to 50%\*, and as a result, transform every part of your day. The benefits will be nothing less than profound.

MAGNETOM Skyra. Transforming 3T productivity.

\*Data on file; results may vary.



Tim® (Total imaging matrix) technology advances MR imaging – again – with the fourth generation (4G) of flexibility, accuracy, and speed. It's Siemens ultimate innovation technology that unlocks imaging power like never before. Tim's newly designed ultra high-density coils are combined with the highest channel configurations ever offered. And, with Tim 4G's new patient-adaptive technology, image quality and acquisition speed go to a whole new level. Think more exams per day. Every day.

Dot™ (Day optimizing throughput) technology offers a customizable framework for patient personalization, user guidance, and exam automation to help optimize every part of your MRI workflow. From reduction in your exam times and improved clinical workflows to enhanced staff efficiencies. Exam by exam, patient by patient, Dot helps to take the complexity out of MRI scanning. Dot multiplies the power of Tim resulting in greater image consistency and diagnostic confidence, greater ease of use, and a day that's more productive than ever before.



# Tim + Dot

## MAGNETOM Skyra

Transforming 3T productivity.

MAGNETOM Skyra delivers true day-changing performance. Through the groundbreaking integration of Tim 4G and Dot, MAGNETOM Skyra sets a new standard of efficiency and care, which will help you harness a new level of productivity.

Tim 4G gives you the power you need for superb image quality. And Dot helps take away the complexity inherent in MRI scanning that can slow you down. With MAGNETOM Skyra you'll significantly optimize your clinical and business processes, reduce staff workload, and radically improve your return on investment (ROI). And, most importantly, deliver the excellent quality of care to your patients – regardless of patient condition.

Today, when healthcare is under pressure from all sides, MAGNETOM Skyra delivers. Clinically. Economically. Easily. It will literally transform the way you work with MRI.



Dot integrated.



Tim 4G integrated.



Top-of-the-line 3T.

Choose color or wood panel for MAGNETOM Skyra. Or, with our new Illumination MoodLight™ design, the color of the panel can be changed as desired. You can also customize the scanner with your own engraved logo.

The world's first 70 cm Tim+Dot system.



Tim+Dot  
Patient-centered care

**Tim 4G flexibility.**

- Now you never have to wonder if you have enough channels to support ultra high-density coils. Tim 4G offers flexibility for the future with up to 128 channels.
- Tim DirectConnect™ cableless coils are easier and faster to handle. And they're ultra-lightweight so they're easy on patients, too.
- Select exams, not coils, for superb coverage of the patient's anatomy. Tim 4G's lightweight coils can be seamlessly integrated to support large anatomic coverage, for instance combining head, neck, body, and spine coil elements to create a neurovascular array.

**MAGNETOM Skyra's 173 cm short system design.**

- Reduces patient fear and anxiety.
- Offers more head-out exams.
- Means fewer refused exams.
- Leads to higher throughput and more referrals.

**New Tim Dockable Table accelerates patient set-up.**

- Patients can be prepared for an exam outside the scanner room and wheeled in when ready.
- Totally Tim-ready with integrated, removable Spine 32-channel coil.
- Holds up to 250 kg / 550 lb to accommodate more patients.
- Enjoy fast patient preparation, easy patient transport, comfort for immobile patients, and flexibility in emergency situations.

**MAGNETOM Skyra's 70 cm Open Bore.**

- The preferred design by claustrophobic patients\*. But all patients will enjoy the extra room, too.
- Captures sharper images due to less anxiety-related movement.
- Helps reduce sedation rates.
- Covers the full patient range: pediatric\*\*, critically ill, obese, and kyphotic to name a few.

\* Per nationwide U.S. survey conducted by Siemens.

\*\* MR scanning has not been established as safe for imaging fetuses and infants under two years of age. The responsible physician has to decide about the benefit of the MRI examination in comparison to other imaging procedures.



**Dot is personalized – for every patient and user.**

- Exam strategies can be designed based on patient condition and clinical indication. Just confirm and start scanning.
- Scanning is personalized for individual breath-hold capacity to eliminate motion artifacts.
- High quality exams are easily reproduced, even when conditions change.
- Customize Dot to your practice; to your standards of care.
- AutoVoiceCommands in multiple languages make exams more personalized.



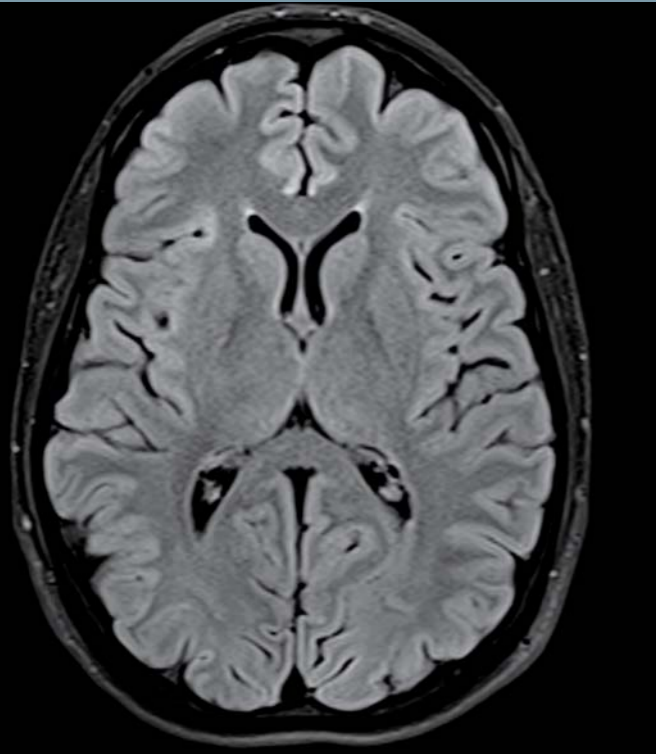
## Consistent scans.

Tim+Dot  
Transform the day

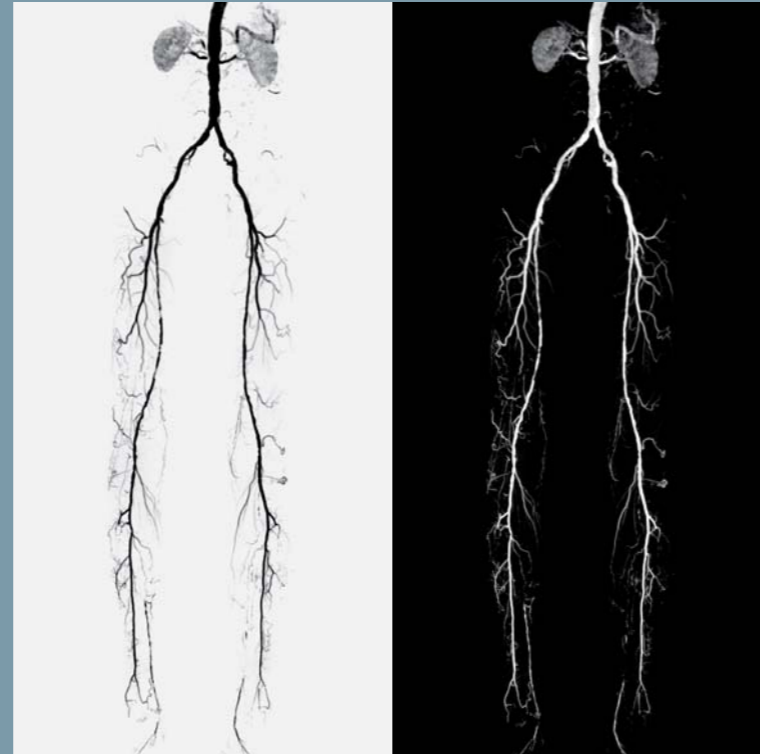
The real power of Tim+Dot in MAGNETOM Skyra is all about consistency. With the accuracy of Tim 4G integrated with the unique on-board guidance of Dot, you will achieve excellent image quality with fewer repeats.

Tim's new ultra high-density array, with up to 204 coil elements, combines with a new RF design, with up to 128 RF channels, for an SNR increase of up to 20%\*. This enables high-resolution imaging that holds up even when zooming in on multi-station images. So you can scan everywhere. Zoom anywhere.

\* Data on file; results may vary.



3T Brain studies are easier than ever. Tim's 20-channel Head/Neck coil offers increased SNR and the new architecture of Tim 4G maximize the capability of every channel.



Easily perform high resolution whole body angio with Tim+Dot. With Tim's new ultra high-density coils and 205 cm scan range, you can easily perform a high-resolution whole body angio without repositioning the patient. And, with Dot's on-board guidance, you can move through the scan with ease, achieving consistently excellent image quality and greater diagnostic confidence.



A complete view of the whole spine is made easy. With Tim 4G, there's no repositioning of your patient. Multi-step exams of the spine can be fused automatically using Inline Composing, giving you a complete view of the whole central nervous system with consistently excellent image quality.

MAGNETOM Skyra is also optimized with TrueForm design addressing the need for uniform field homogeneities. One aspect of TrueForm design is TrueForm Magnet and Gradient design, which is a technical innovation to enable imaging for large volume coverage without compromising spatial resolution

or speed. Another aspect is TimTX TrueForm technology, which provides the foundation for multi-channel transmit array capabilities at 3T. TimTX TrueForm provides uniform radiofrequency distribution in all body regions for B1 homogenization showing consistently signal intensity in the MR images.

**Dot engines make scanning faster, easier, and consistent.**

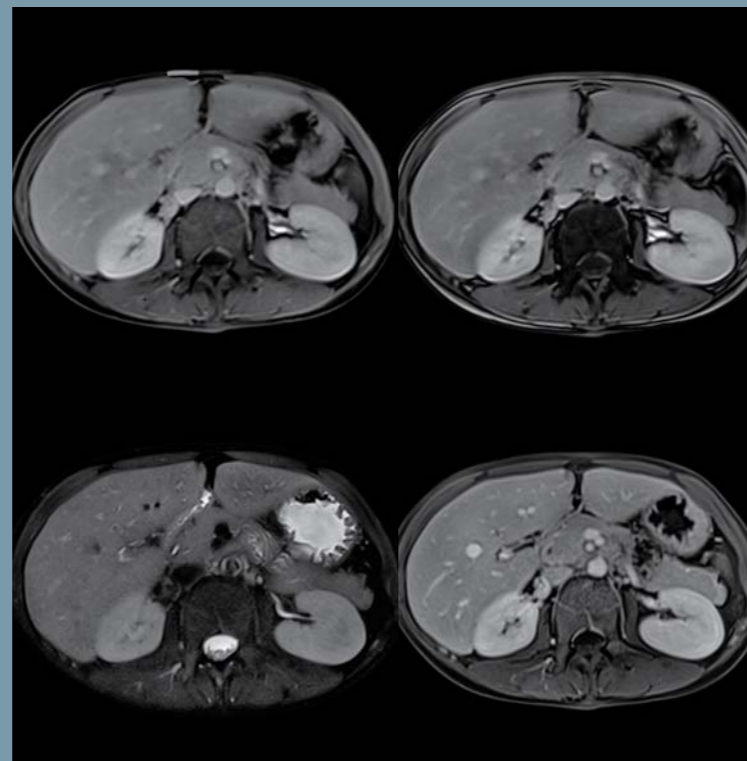
And Dot makes it all so easy. Your customized guidance navigates the user through each exam, indicating critical decision points along the way. Dot offers various workflow engines for different body regions and indications. Each can be tailored to your clinical needs in a way that helps take the complexity out of MRI exams – even cardiac and abdomen.

Now, decisions can be made more confidently and scanning can be done more reliably.

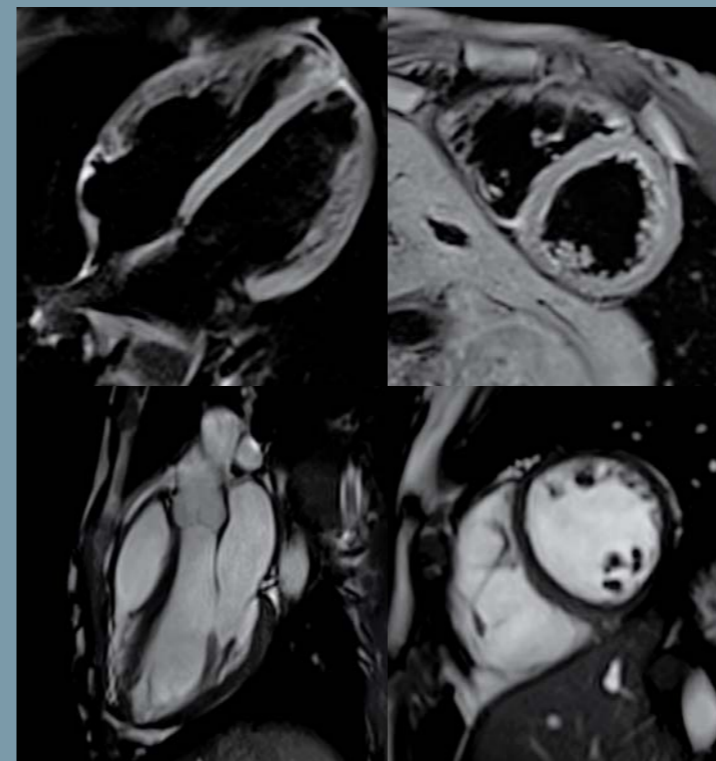
The result is greater efficiency at all levels and a dramatic improvement in consistency.



Tim+Dot mean easy scanning of nearly any body shape or size. TrueForm design lets you use the full 50 x 50 x 45 cm Field of View (FoV). For scans with contrast media, Dot helps to synchronize bolus timing. Real-time graphics and AutoVoiceCommands assist the user in organizing the ideal timing of breathing, scanning, and contrast media.



Acquire whole body coverage for metastasis staging in a single, continuous move with *syngo*® TimCT Oncology. Together with Dot's on-board guidance, this innovative technology improves patient throughput and provides superb image quality.



Thanks to Dot's on-board guidance and the increased SNR of Tim 4G, now you can perform cardiac exams day and night. The Cardiac Dot Engine helps eliminate one of the biggest challenges in cardiac MR simplifying complete cardiac localization down to just a few clicks. TrueForm® design offers superb fat saturation and high image homogeneity.



It's a new way to plan and perform orthopedic exams. Tim 4G's new ultra high-density coils for MSK imaging improve SNR and anatomic coverage. Dot's customizable knee workflow with AutoAlign, offers step-by-step user guidance including guided slice and MPR planning for fast 3D measurements and Inline 3D processing.

# Increase your productivity by up to 50%.

## Tim+Dot Patient-centered care

With the enhanced power of Tim 4G and your customized Dot workflows, you can equip your staff with the productivity-boosting tools they need to efficiently handle a full day's patient load and more. From patient prep and exam set-up, to image acquisition and processing, MAGNETOM Skyra with Tim 4G and Dot can help you realize an increase of up to 50% productivity. The speed of Tim 4G dramatically shortens acquisition time, while Dot's intelligent automated workflows make set-up and scanning nearly effortless. Now, even some of the most complex exams such as cardiac and abdomen can be performed confidently.

\*MR scanning has not been established as safe for imaging fetuses and infants under two years of age. The responsible physician has to decide about the benefit of the MRI examination in comparison to other imaging procedures.

### Reach out to new patient populations.

- Obese patients
- Pediatric patients\*
- ICU patients or those dependent on medical equipment

### Better accommodate difficult-to-scan patients.

- Kyphosis
- Respiratory problems
- Pain and mobility issues
- Claustrophobia
- Anxiety

### Start realizing value from your MAGNETOM Skyra scanner faster than ever.

- Fast installation
- Fast and easy training for most MRI users
- Familiar UI for all modalities means faster user acceptance



**The smallest footprint** of any 3T currently on the market, MAGNETOM Skyra is easy to site and can fit into a room typically sized for a 1.5T scanner. There's no need for a large, dedicated computer room because the all-digital Tim 4G technology is concentrated at the magnet. And, lifecycle costs are reduced due to its optimized cooling system and Zero Helium boil off. With MAGNETOM Skyra, it's a whole new day in MRI.

**Get the most out of your system – throughout the life of your system.** Visit our website, MAGNETOM World, for current clinical information to optimize your daily MRI examinations ([www.siemens.com/magnetom-world](http://www.siemens.com/magnetom-world)). In addition, *syngo* Remote Assist, our interactive help line that connects Siemens Healthcare professionals with our customers, allowing for using your system's full capabilities to boost productivity. And, *syngo* Evolve, our obsolescence protection program, keeps you on the cutting edge of technology. Find out more at [www.siemens.com/discoverMR](http://www.siemens.com/discoverMR).

**Mobility done right.** The Tim Dockable Table offers an innovative multi-directional navigation wheel for easier handling and 360 degree flexibility.

**Tim Dockable Table** gives you easy docking integrated right into the scanner. The receiving port guides the table, enabling correct alignment.

**New DirectConnect coils.** Eliminate the hassle and inefficiency of cables. With no attenuating cable, you'll also enjoy an improvement in SNR.

**Dot engines.** Dot means that scans can be completed faster and more easily, with less chance of errors or repeats.

### Timing is synchronized.

Dot integrates AutoVoiceCommands into your scan process for synchronized timing of breathing and scanning. Contrast timing is more accurate with AutoBolusDetection.

**syngo TimCT moves MRI forward.** Literally. Offering Continuous Table move for CT-like scanning. Now you can acquire up to whole body planning scans in a single, continuous move.





## MAGNETOM Skyra. Transforming 3T productivity.

The clinical and business imperative behind greater productivity in healthcare is clear. With MAGNETOM Skyra, we've designed a new way of realizing the total power of MRI. To deliver robust image quality, consistently. To increase productivity by up to 50%. To radically improve return on investment (ROI) anywhere MRI is used. It's the next era in MRI, and once again Siemens is leading the way.

### MAGNETOM Skyra Dot integrated.

- Exam-by-exam, patient-by-patient, helping to take the complexity out of MRI scanning.
- Personalized, guided, and automated exams with Dot.
- Dot engines make scanning faster, easier, and consistent.

### MAGNETOM Skyra Tim 4G integrated.

- Tim's fourth generation of flexibility, accuracy, and speed.
- Tim 4G gives you the power you need for superb image quality.

### MAGNETOM Skyra Top-of-the-line 3T.

- High patient comfort with 70 cm Open Bore and short system design.
- Attract more referrals and improve marketability.
- Low operational costs with low energy and siting costs and Zero Helium boil-off.

On account of certain regional limitations of sales rights and service availability, we cannot guarantee that all products included in this brochure are available through the Siemens sales organization world-wide. Availability and packaging may vary by country and are subject to change without prior notice. Some/All of the features and products described herein may not be available in the United States.

All devices listed herein may not be licensed according to Canadian Medical Devices Regulations. The information in this document contains general technical descriptions of specifications and options as well as standard and

optional features which do not always have to be present in individual cases.

Siemens reserves the right to modify the design, packaging, specifications, and options described herein without prior notice. Please contact your local Siemens sales representative for the most current information. Note: Any technical data contained in this document may vary within defined tolerances. Original images always lose a certain amount of detail when reproduced.

Please find fitting accessories:  
[www.siemens.com/medical-accessories](http://www.siemens.com/medical-accessories)

#### Images courtesy of:

Radiologisches Zentrum  
München-Pasing,  
Munich, Germany

University Medical Center,  
Mannheim, Germany

MRI Bethanien,  
Zurich, Switzerland

#### Global Business Unit

Siemens AG  
Healthcare Sector  
Magnetic Resonance  
Henkestr. 127  
91052 Erlangen  
Germany  
Phone: +49 9131 84-0

#### Local Contact Information

##### In the USA

Siemens Medical Solutions USA, Inc.  
51 Valley Stream Parkway  
Malvern, PA 19355  
Phone: +1 888-826-9702  
Phone: +1 610-448-4500  
Fax: +1 610-448-2254

##### In China

Siemens Medical Park, Shanghai  
278, Zhouzhu Road  
SIMZ, Nanhui District  
Shanghai, 201318, P.R. China  
Phone: +86-21-38895000  
Fax: +86-10-28895001

##### In Japan

Siemens-Asahi  
Medical Technologies Ltd.  
Takanawa Park Tower 14F  
20-14, Higashi-Gotanda  
3-chome  
Shinagawa-ku, Tokyo 141-8644  
Phone: +81 3 5423 8411

##### In Asia

Siemens Pte Ltd  
Healthcare Sector  
Regional Headquarters  
The Siemens Center  
60 MacPherson Road,  
Singapore 348615  
Phone: +65 6490-6000  
Fax: +65 6490-6001

#### Global Siemens Headquarters

Siemens AG  
Wittelsbacherplatz 2  
80333 Muenchen  
Germany

#### Global Siemens Healthcare Headquarters

Siemens AG  
Healthcare Sector  
Henkestrasse 127  
91052 Erlangen  
Germany  
Phone: +49 9131 84-0  
[www.siemens.com/healthcare](http://www.siemens.com/healthcare)

#### Legal Manufacturer

Siemens AG  
Wittelsbacherplatz 2  
DE-80333 Muenchen  
Germany