

Biograph TruePoint PET•CT

HD•PET Clinical Images

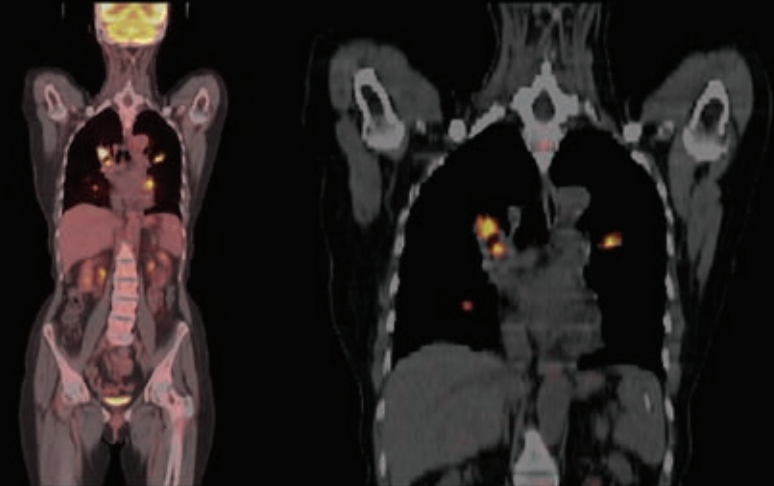
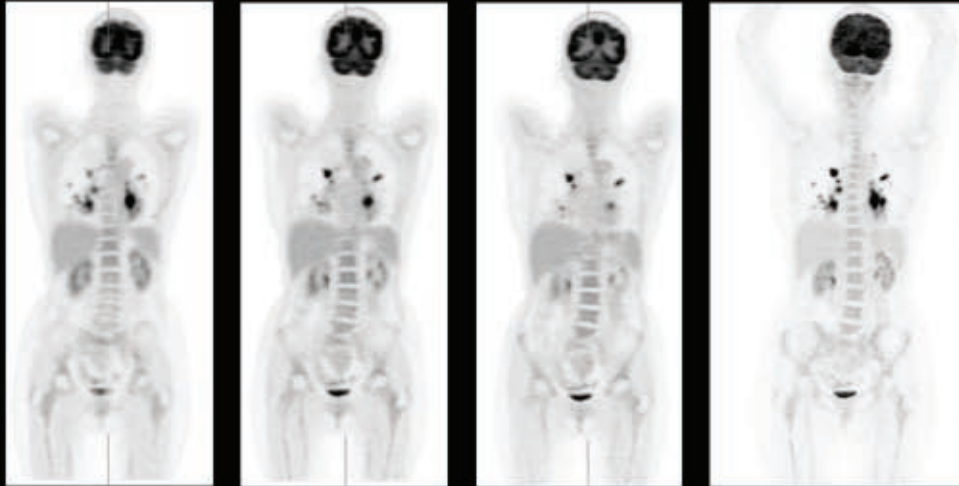
www.siemens.com/mi

SIEMENS
medical

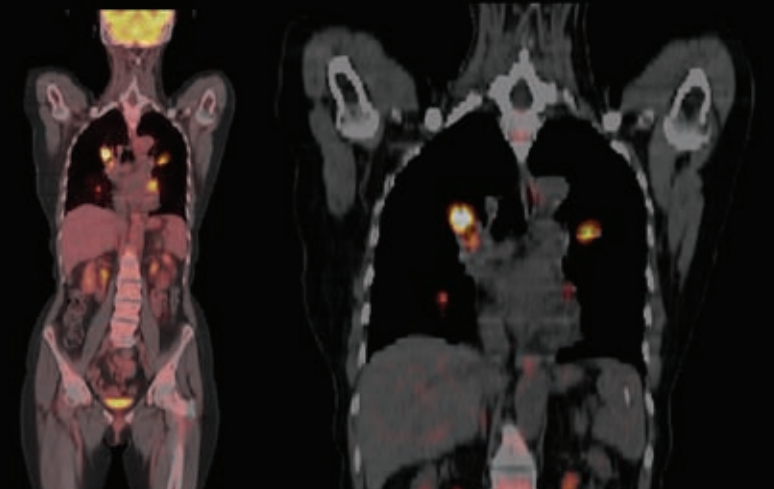
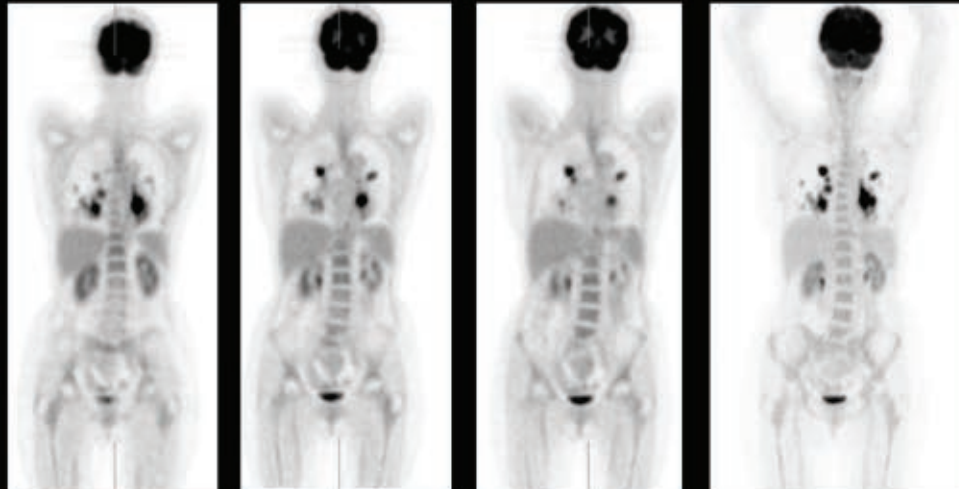
SIEMENS

Biograph TruePoint PET•CT

HD•PET



Conventional PET



Lung Cancer — HD•PET Comparison

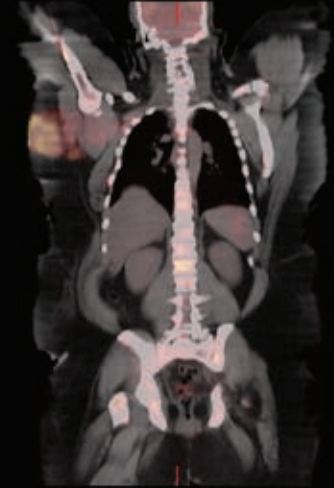
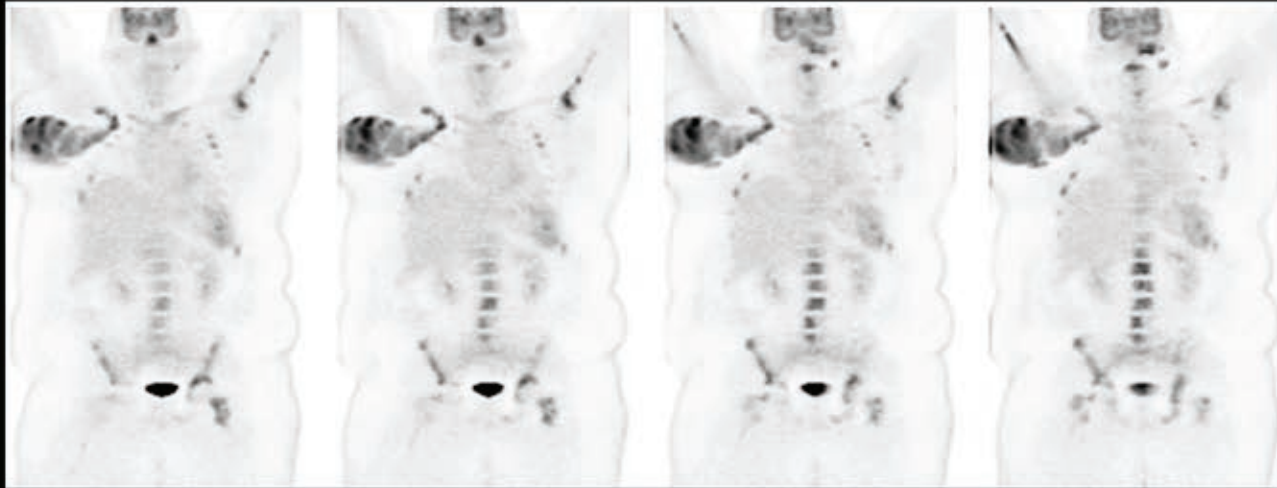
Lung Cancer with bilateral mediastinal and hilar lymph node metastases. Improved delineation of small metastatic hilar, lobar and interlobar lymph nodes with HD•PET as compared to standard reconstruction

Scan protocol: 10 mCi (370 MBq) ¹⁸F-FDG. 90 min uptake time, 5 beds/2min per bed. Study acquired on Biograph 6 with TrueV.

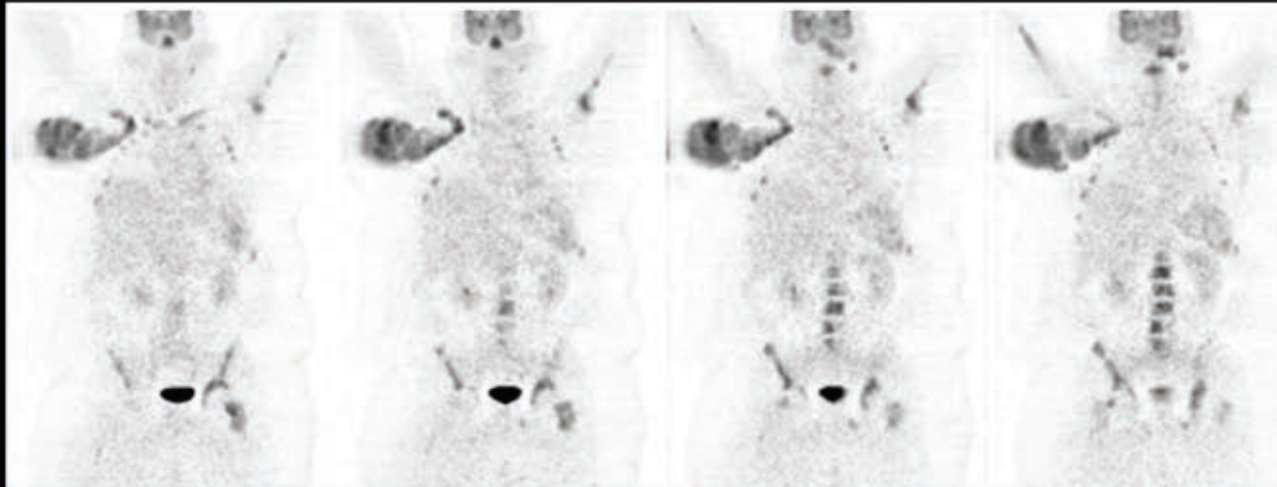
SIEMENS

Biograph TruePoint PET•CT

HD•PET



Conventional PET



429 Ib Patient with Disseminated Metastases — HD•PET Comparison

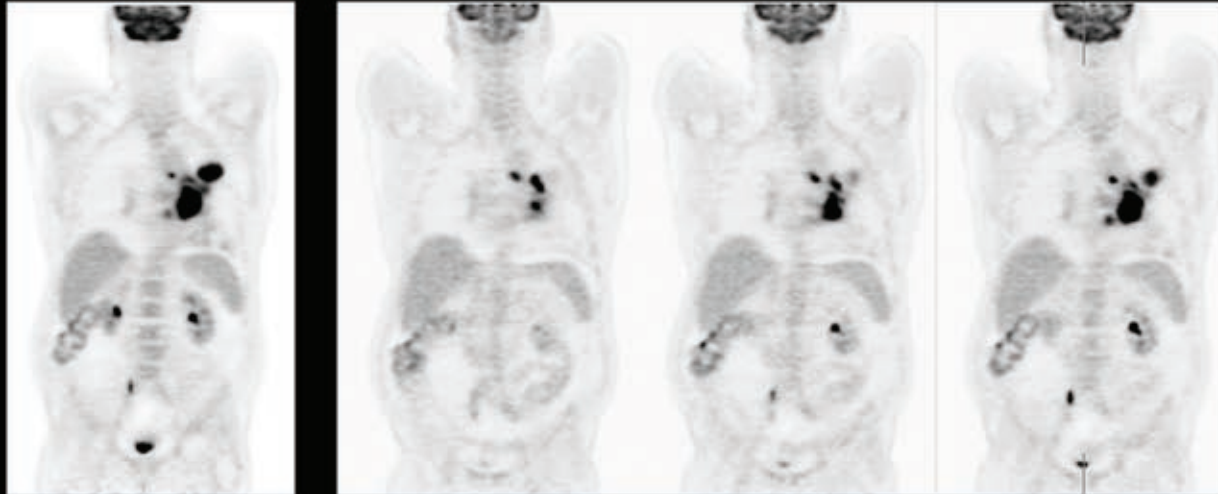
Huge axillary nodal involvement and multiple skeletal lesions. Improved delineation of individual lesion in HD•PET compared to standard reconstruction. Dramatic improvement in general image quality in HD•PET.

Scan protocol: 4 beds/3 min per bed.

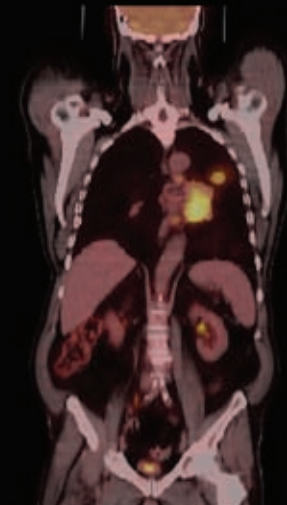
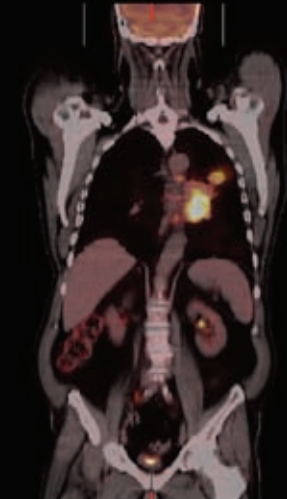
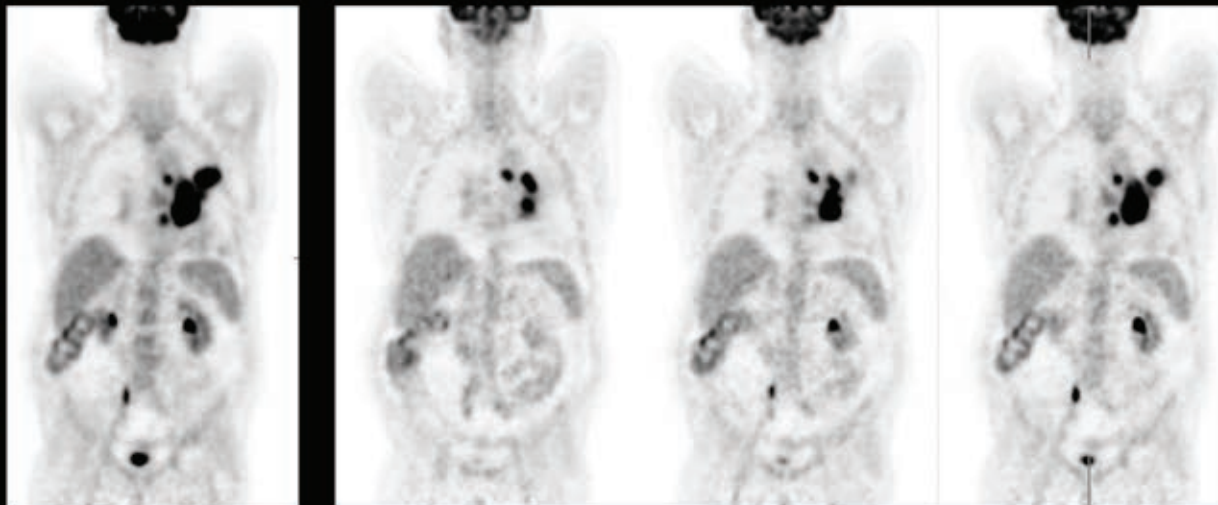
SIEMENS

Biograph TruePoint PET•CT

HD•PET



Conventional PET



Lung Cancer — HD•PET Comparison

Lung cancer with multiple hilar and mediastinal nodes. Improved delineation matted mass of hilar nodes and small paratracheal nodes by HD•PET as compared to standard reconstruction.

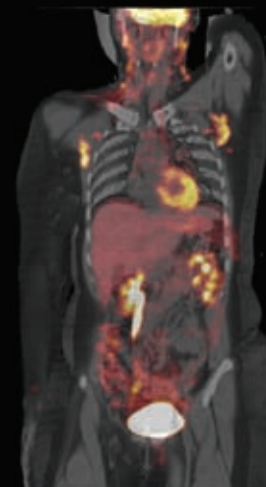
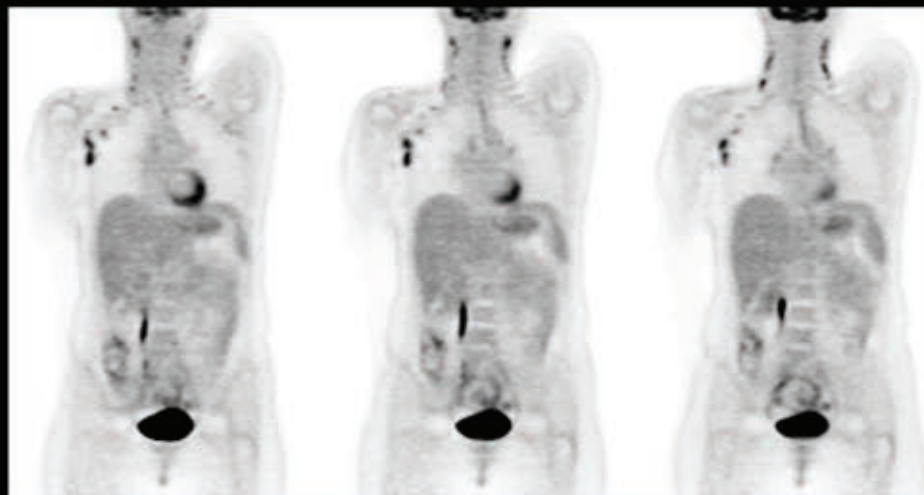
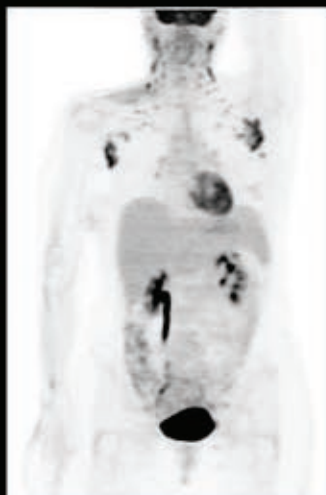
Scan protocol: 10 mCi (370 MBq) ^{18}F -FDG. 90 min uptake time, 5 beds/2min per bed PET acquisition.

Study acquired on Biograph 6 with TrueV.

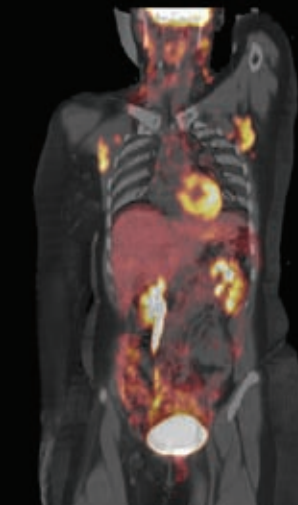
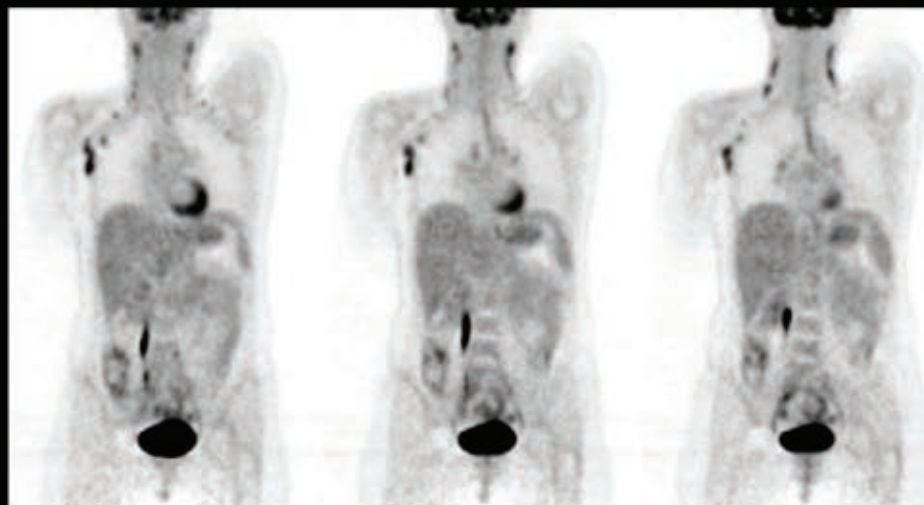
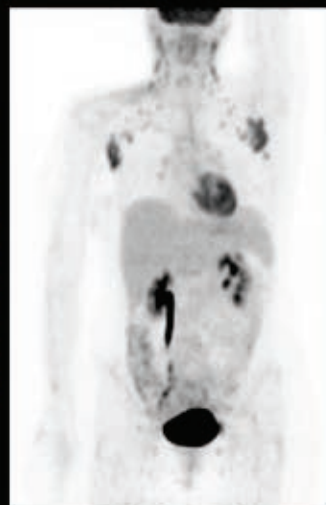
SIEMENS

Biograph TruePoint PET•CT

HD•PET



Conventional PET



Lymphoma — HD•PET Comparison

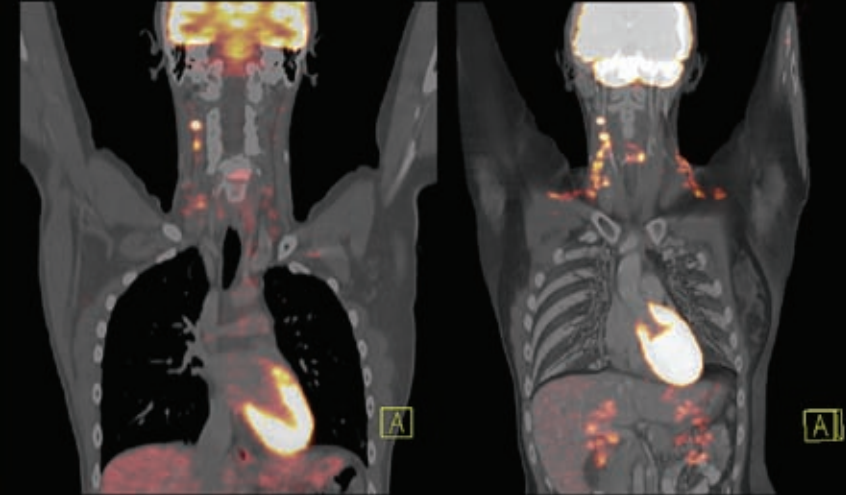
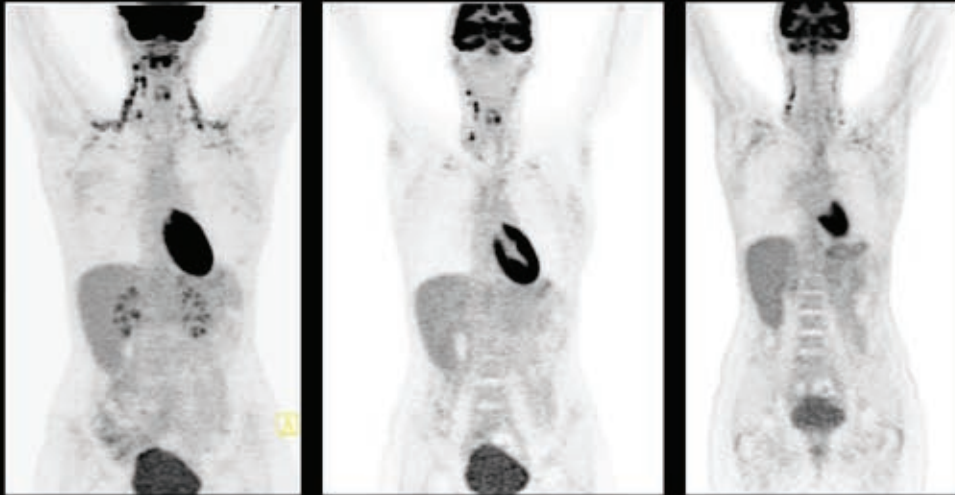
Bilateral axillary and cervical lymphadenopathy. HD•PET shows improved delineation of small lymph nodes.

Scan protocol: 10.2 mCi (370 MBq) ¹⁸F-FDG. 90 min uptake time, 5 beds/2 min per bed. Study acquired on Biograph 6 with TrueV.

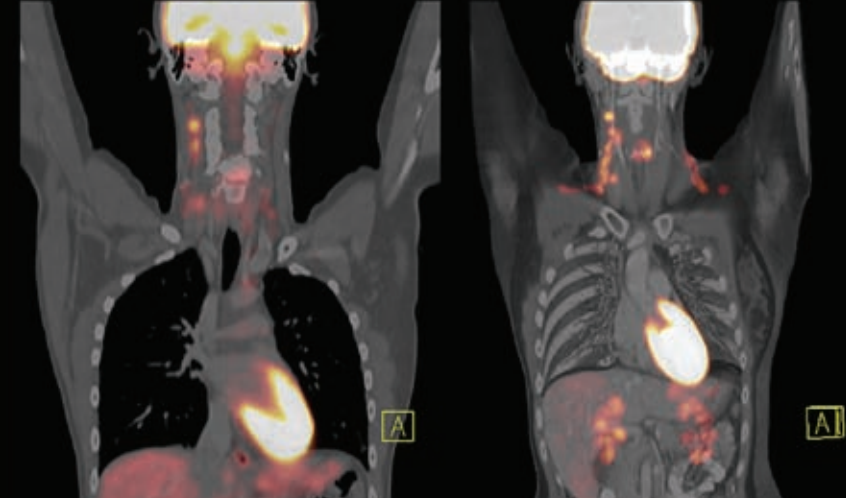
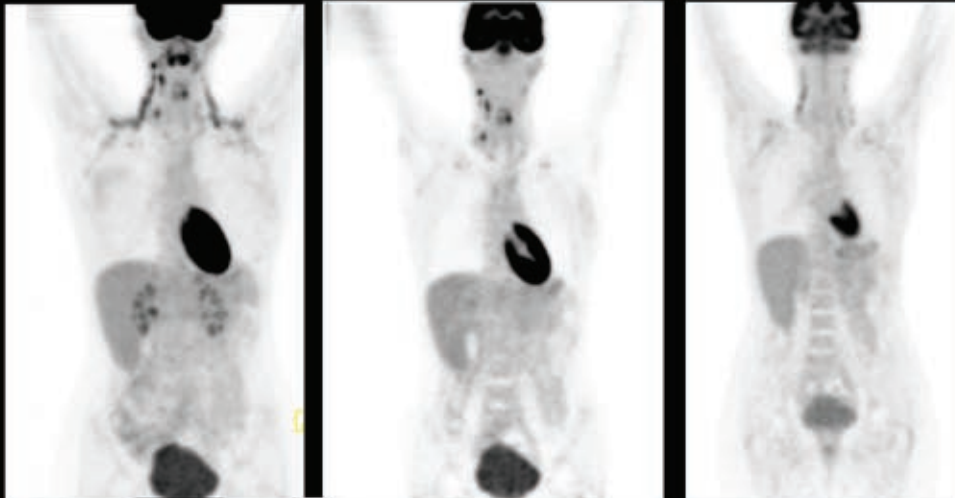
SIEMENS

Biograph TruePoint PET•CT

HD•PET



Conventional PET



Cervical Lymph Node Metastases — HD•PET Comparison

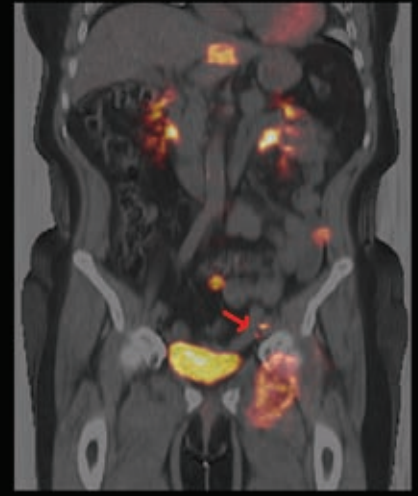
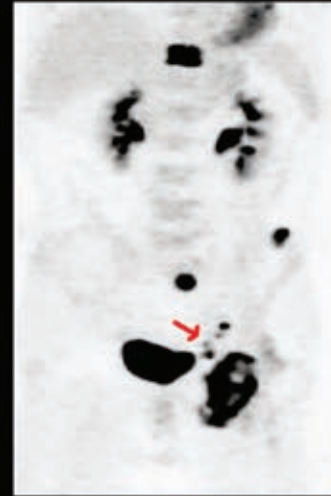
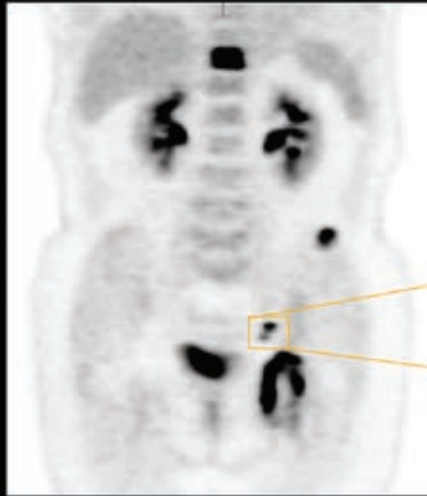
Hypermetabolic cervical lymph node metastases are visible within FDG avid brown fat. Sharper delineation of nodes is shown by the HD•PET images. Standard reconstruction shows uniform level of uptake without clear delineation of individual nodes. Study acquired on Biograph 64.

Scan protocol: 7.9 mCi (292 MBq) ¹⁸F-FDG. 8 beds/3 min per bed.

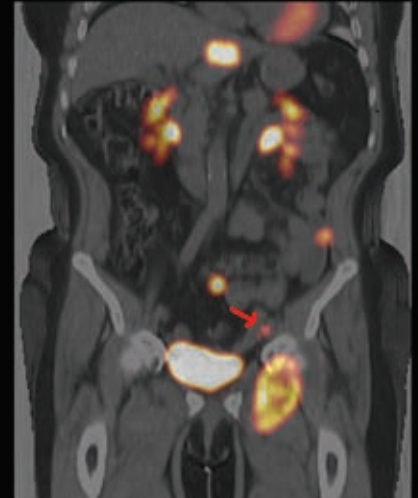
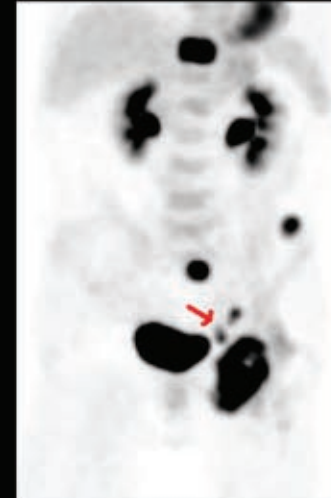
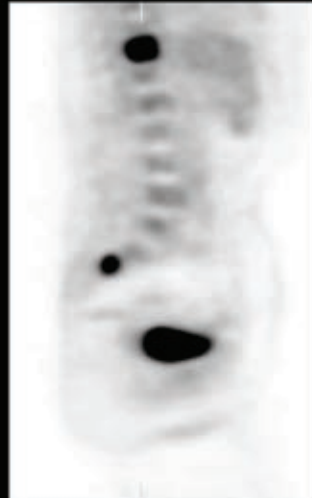
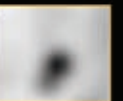
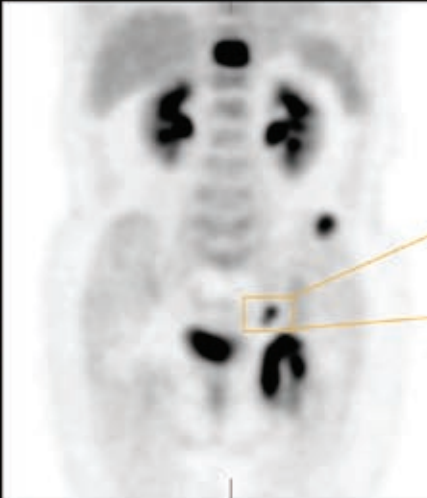
SIEMENS

Biograph TruePoint PET•CT

HD•PET



Conventional PET



Pelvic Node Metastases — HD•PET Comparison

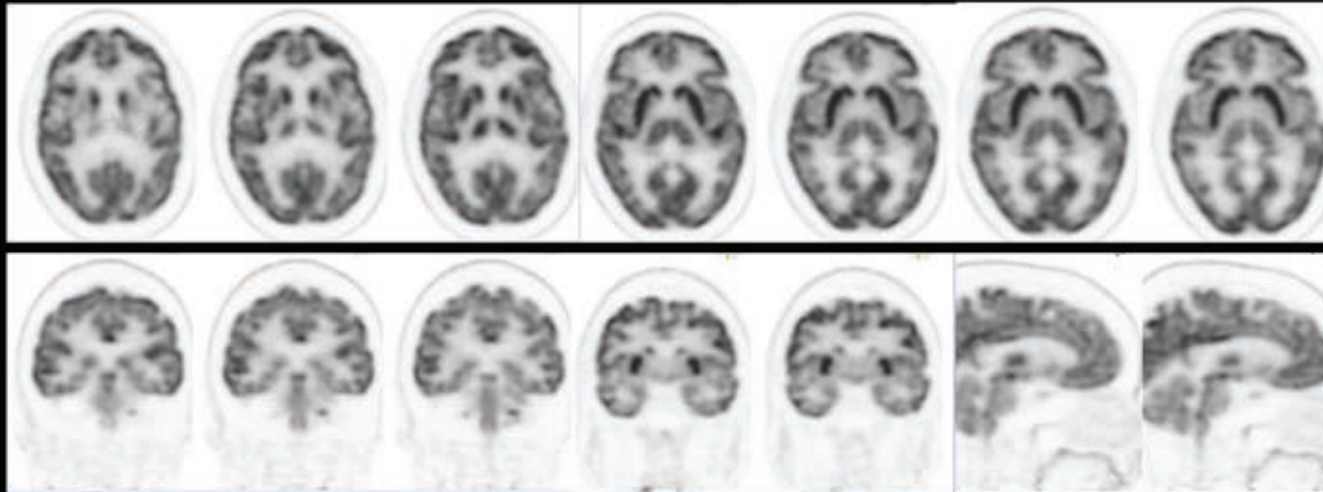
66 yr female with bony and pelvic lymph node metastases. Two separate nodes identified by HD•PET while standard PET shows one large extended nodule.

Scan protocol: 9.3 mCi (343 MBq) ¹⁸F-FDG, 4 beds/3 min per bed.

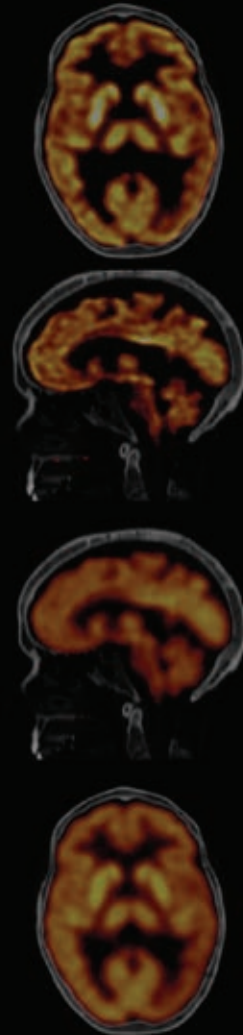
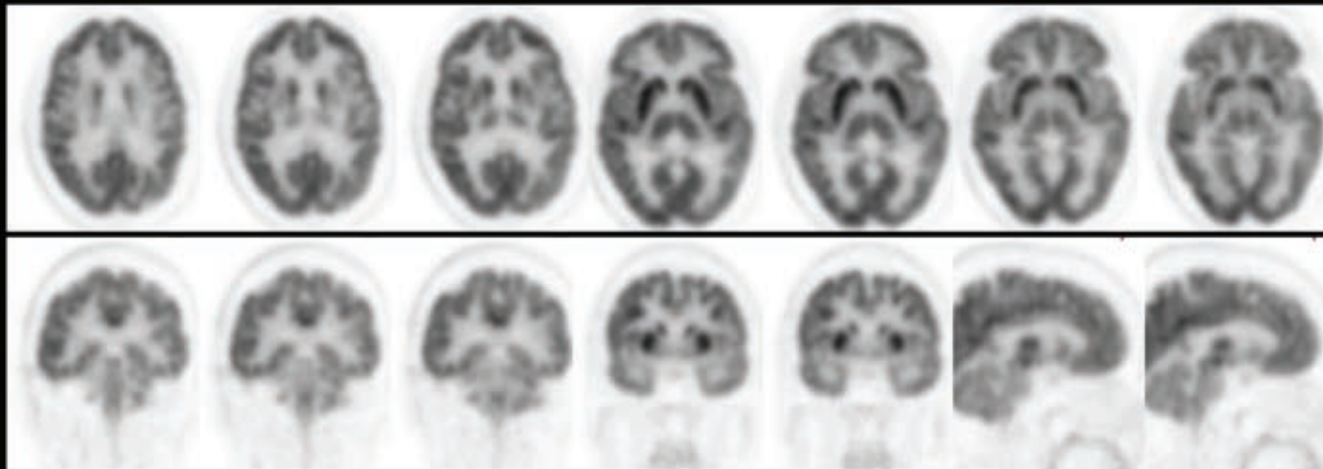
SIEMENS

Biograph TruePoint PET•CT

HD•PET



Conventional PET



FDG Study of Normal Brain — HD•PET Comparison

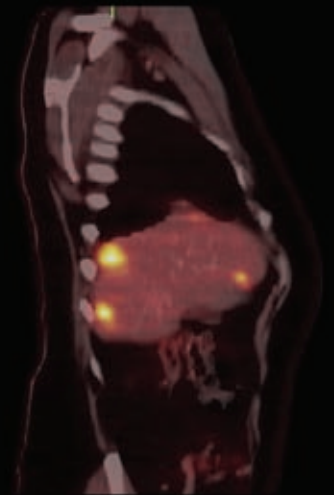
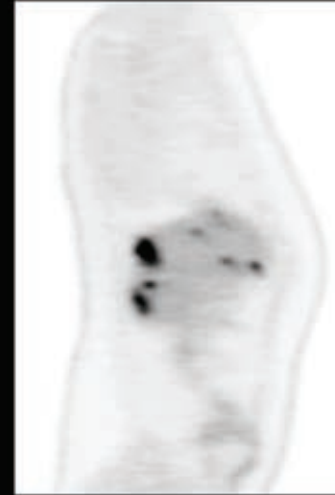
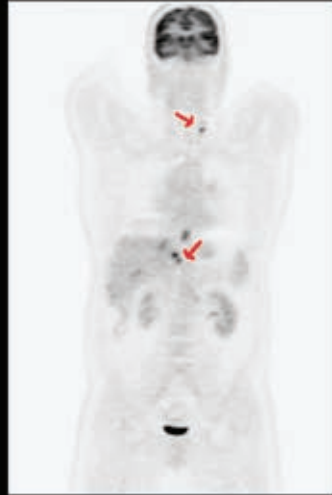
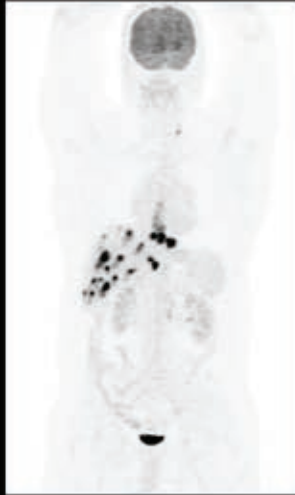
Improved resolution and visualization of intracerebral structures like basal ganglia, cerebellum, and pons with HD•PET, as compared to standard reconstruction.

Scan protocol: 10 mCi (370 MBq) ¹⁸F-FDG injection. 90 min uptake time, 1 bed/10 min per bed. Study acquired on Biograph 6 with TrueV.

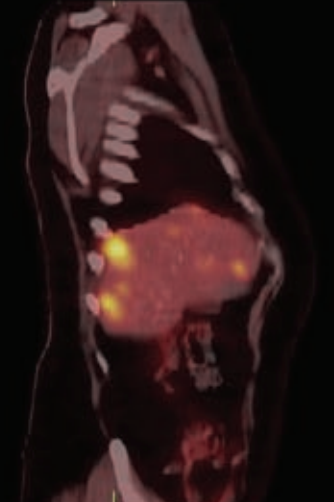
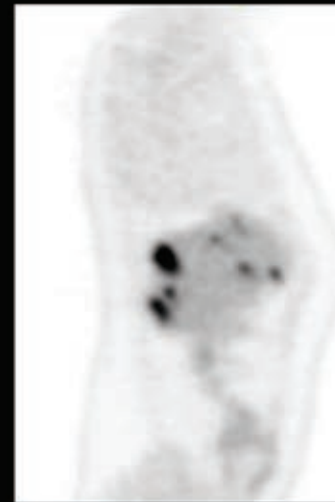
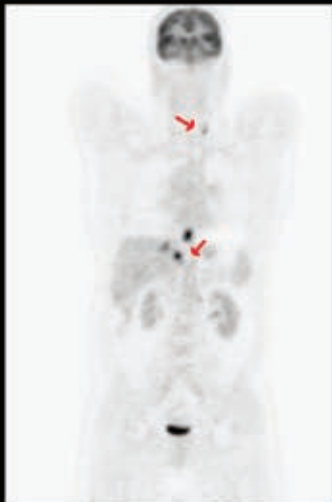
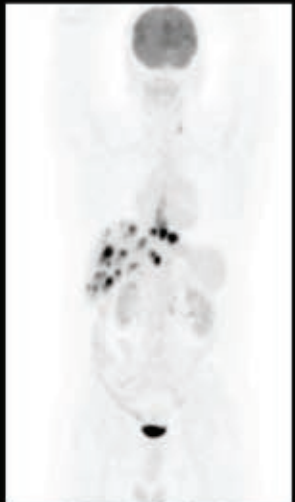
SIEMENS

Biograph TruePoint PET•CT

HD•PET



Conventional PET



Liver Metastases — HD•PET Comparison

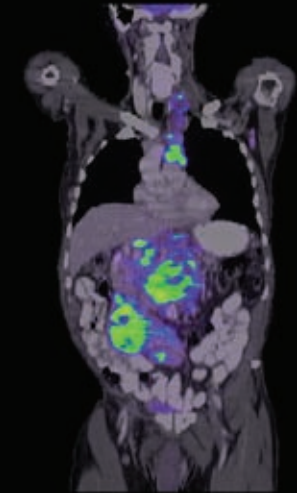
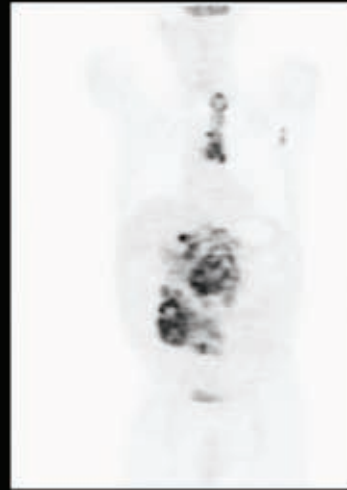
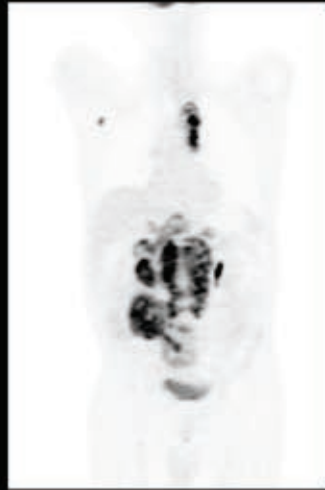
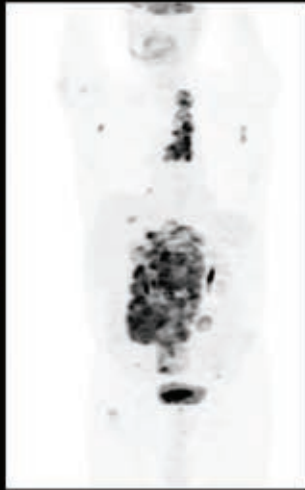
Liver metastases from colorectal carcinoma. Improved visualization of multiple small liver lesions with HD•PET, as compared to standard reconstruction. Small lesions shown by the arrows are better defined using HD•PET.

Scan protocol: 10mCi (370 MBq) ¹⁸F-FDG. 90 min uptake time, 5 beds/2 min per bed.

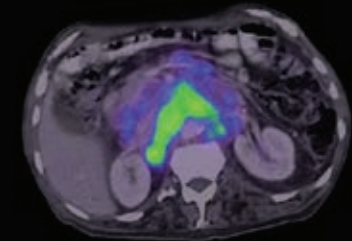
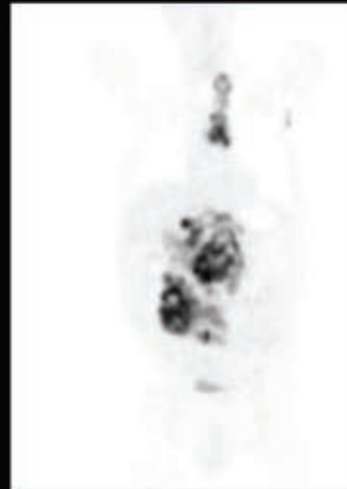
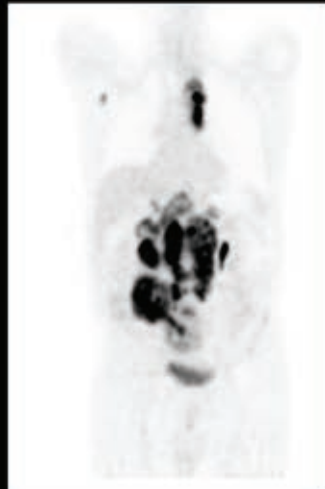
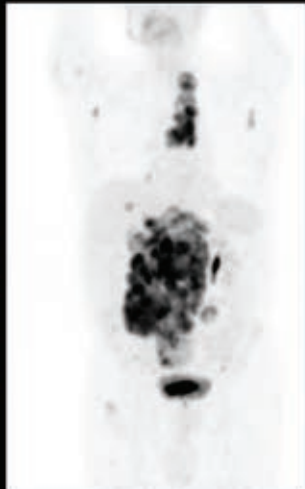
SIEMENS

Biograph TruePoint PET•CT

HD•PET



Conventional PET



Hodgkin's Lymphoma — HD•PET Comparison

Extensive abdominal and mediastinal lymphadenopathy. HD•PET shows clarity of lesion delineation compared to conventional PET reconstruction.

Scan protocol: 10 mCi (370 MBq) ^{18}F -FDG. 90 min uptake time, 5 beds/3 min per bed. Study acquired on Biograph 6 with TrueV.

TruePoint is a trademark of Siemens AG, Medical Solutions.

Biograph is a trademark of Siemens Medical Solutions USA, Inc.

Please contact your local Siemens sales representative for the most current information or contact one of the addresses listed below.

© 2007 Siemens Medical Solutions USA, Inc.
All rights reserved.

All photographs © 2007 Siemens Medical Solutions, USA, Inc.
All rights reserved.

Note: Original images always lose a certain amount of detail when reproduced.

*Any of the protocol(s) presented herein are for informational purposes and are not meant to substitute for any clinicians' judgment in how best to use any medical devices. It is the clinician that makes all diagnostic determinations based upon education, learning and experience.

Contact Addresses

Siemens Medical Solutions USA
Molecular Imaging
2501 N. Barrington Road
Hoffman Estates, IL 60192-5203
USA
Telephone: +1-888-826-9702
www.siemens.com/mi

Siemens Medical Solutions USA
Molecular Imaging
810 Innovation Drive
Knoxville, TN 37932-2751
USA
Telephone: +1-888-826-9702
www.siemens.com/mi

© 08.2007, Siemens AG
Order No. A91MI-10119-1C-7600

Siemens Medical Solutions USA
Molecular Imaging
810 Innovation Drive
Knoxville, TN 37932-2751
USA

Headquarters

Siemens Medical Solutions USA, Inc.
51 Valley Stream Parkway
Malvern, PA 19355-1406
USA
Telephone: +1-888-826-9702

www.siemens.com/mi