

Vascular Imaging

REAL SOLUTIONS

Understanding challenges
Providing answers
Improving outcomes



The ACUSON Antares™ ultrasound system, premium edition; provides the optimal solution for all of your vascular imaging needs. Consistent image quality is accomplished with ease through advanced features such as TEQ technology and Clarify VE technology. DICOM Structured Reporting streamlines your department workflow, and the advanced ErgoDynamic™ imaging system design provides increased operator comfort, making the Antares system the superior solution for vascular imaging.

Highlights

syngo® Arterial Health Package*:

Migrated from the ACUSON Sequoia™ system, this semi-automated intima-media thickness quantification tool provides a non-invasive method to evaluate cardiovascular risk. The Siemens method correlates with the Stein algorithm and Framingham risk scoring such that vascular age and coronary health can be predicted.

Virtual format imaging:

Provides 2D linear beam steering, allowing for optimal insonation angle in 2D imaging for improved interrogation of vascular anatomy.

Clarify™ vascular enhancement technology*:

Improves B-mode imaging by reducing noise and artifacts within vessels, affording clearer wall and vessel-lumen definition.

DICOM structured reporting:

Streamlines clinical reporting process by automatically transferring patient and calculation data to DICOM vascular reporting packages.

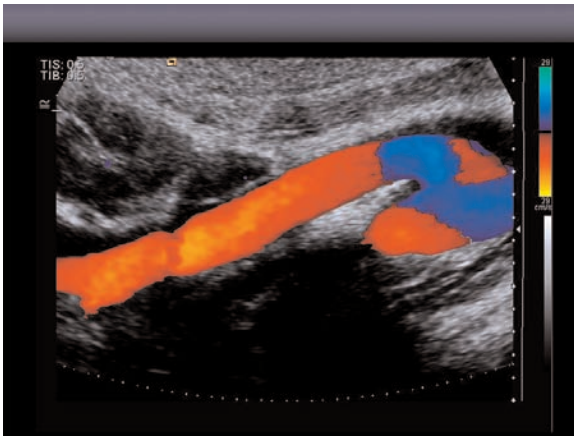
SieScape™ panoramic imaging:

Provides extended field-of-view images acquired with real-time, high-resolution gray scale and power Doppler. Displays the entire length of a vessel in applications such as vein mapping.

TEQ™ ultrasound technology:

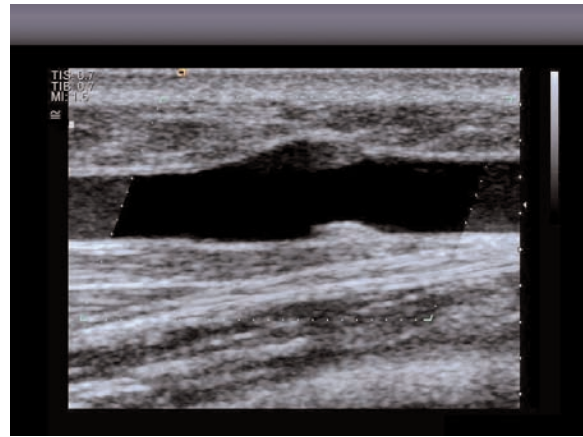
Provides single-button optimization for 2D and spectral Doppler imaging. Adjusts spectral Doppler gain, baseline, pulse-repetition frequency and dynamic range for consistent imaging and streamlined workflow.

ACUSON Antares ultrasound system, premium edition
Superior imaging for today's vascular imaging challenges



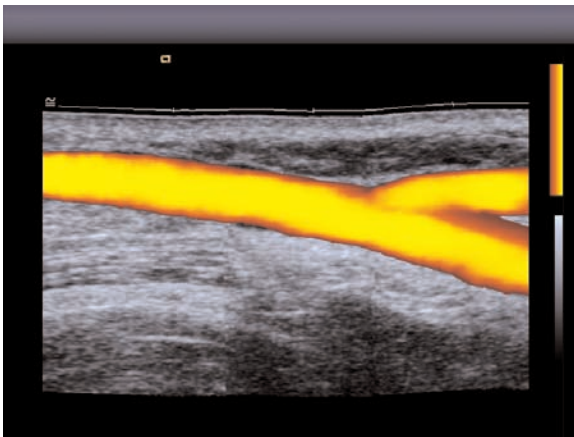
Virtual format imaging

- Provides a trapezoid image format for a wider field of view necessary for the complete evaluation of the external carotid artery with Color Doppler imaging.



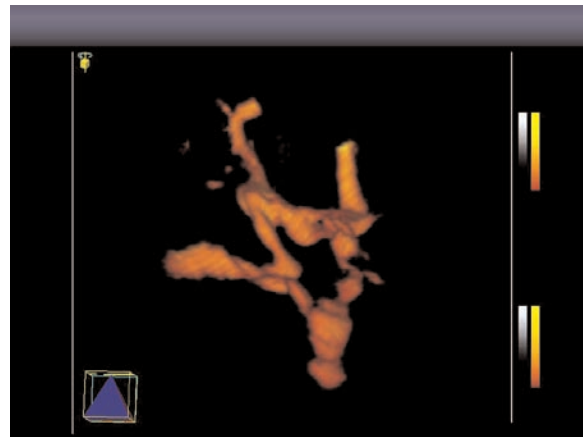
Clarify vascular enhancement technology

- Removes noise and artifacts to clearly accentuate the venous valves in the cephalic vein.



SieScape panoramic imaging

- Provides an extended field of view in 2D and Power Doppler imaging to demonstrate the carotid bifurcation.



3-Scan™ real-time 3D imaging

- Combined with Power Doppler, 3-Scan imaging is used to demonstrate the complete circle of Willis in a Transcranial Doppler exam.

**Available on ACUSON Antares, premium edition only.*

© 02.2007, Siemens AG
 Order No.
 A91US-44-1C-4A00
 Printed in USA
 WS 0207 5.0

Headquarters

Siemens Medical Solutions USA, Inc.
 51 Valley Stream Parkway
 Malvern, PA 19355-1406 USA
 Telephone: +1-888-826-9702
 www.usa.siemens.com/medical

Europe: +49 9131 84-0
 Asia Pacific: +65 6341 0990
 Latin America: +1-786-845-0697

USA

Siemens Medical Solutions USA, Inc.
 Ultrasound Division
 1230 Shorebird Way
 P.O. Box 7393
 Mountain View, CA 94039-7393 USA
 Telephone: +1-888-826-9702