

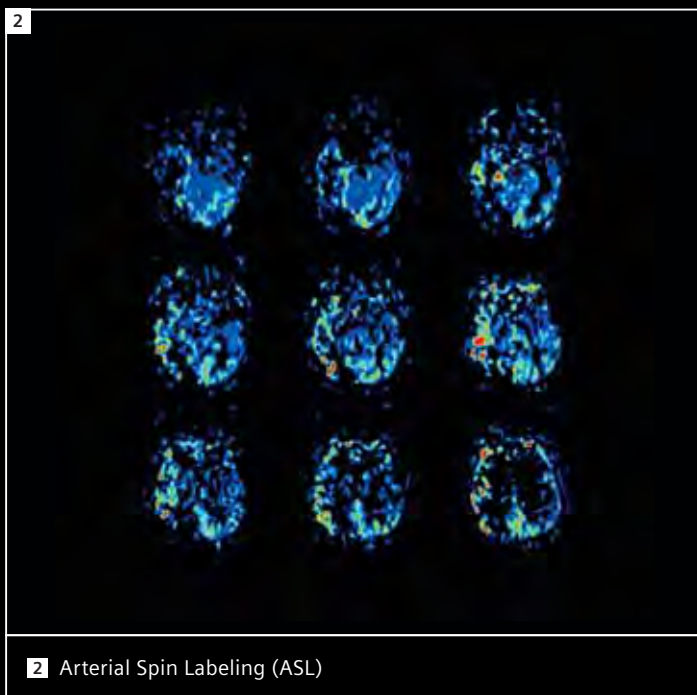
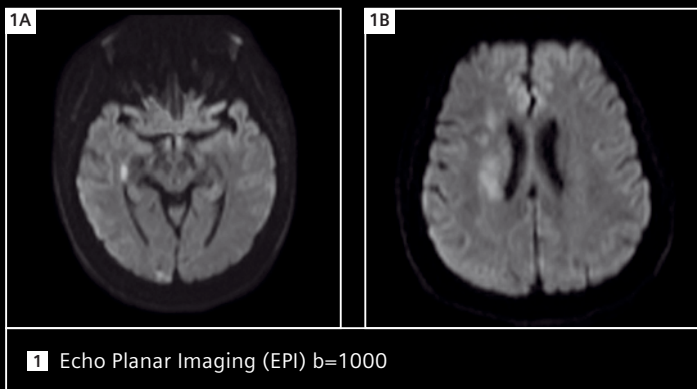
# ASL Image Gallery from Tiantan Hospital

Jianping Dai, M.D., Ph.D.

Department of Radiology, Tiantan Hospital, Capital Medical University, Beijing, China

## Case 1 Infarct

Diffusion-weighted image (DWI) shows high signal in the right occipital lobe and adjacent to the right lateral ventricle. Arterial Spin Labeling (ASL) shows significantly decreased perfusion in the occipital lobe.



## Case 2 Meningioma

Right frontal lobe mass with high CBF.

