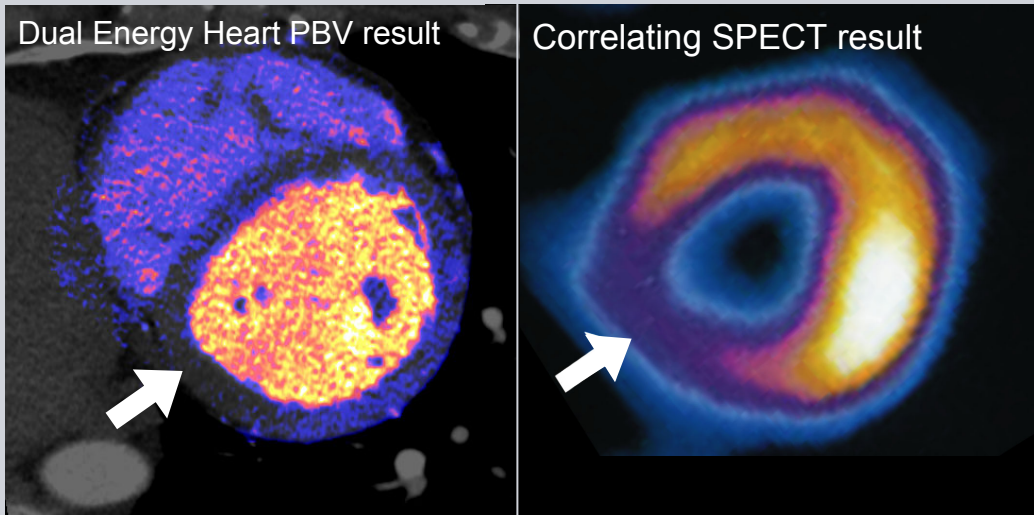


NEW syngo Dual Energy Heart PBV –

One scan takes Cardiac CT beyond quantitative and functional analysis



syngo Dual Energy Heart PBV

immediately reveals a mid posterior wall perfusion deficit of the myocardium.

FastLink allows for zero delay evaluation - because time is muscle.

Taking a closer look on the coronary arteries with **syngo Circulation**. The Left Ventricular Analysis (LVA) shows akinesis in the mid posterior wall.

With **syngo WebSpace** the results are immediately available for the Cardiologist to plan an appropriate therapeutic strategy more reliably and more quickly.

Cardiac one-stop shopping with **syngo Dual Energy Heart PBV**

Circulation 2008 , U. Joseph Schoepf, Myocardial Ischemia Diagnosed by Dual-Energy Computed Tomography, Correlation with Single-Photon Emission Computed Tomography

Courtesy of Medical University of South Carolina / Charleston, USA