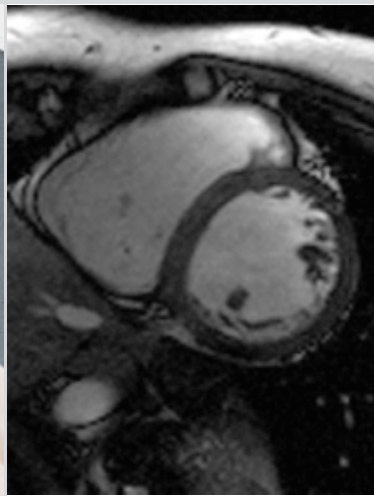


3T Applications



MAGNETOM Trio 3T Unlimited in Cardiac MR

MAGNETOM Trio

3T Unlimited in Cardiac MR

MAGNETOM Trio is 3T Unlimited

3T magnets offer double signal-to-noise (SNR) compared to 1.5T and opens new dimensions in MR examinations. MAGNETOM Trio is a 3T whole-body MR scanner that has been optimized at every level so that the increase in SNR can be fully exploited in cardiac MR applications. Best homogeneity, advanced coil technology, standard 8 RF channels, iPAT applications, and gradient speed are some of the many components that contribute to the quality of cardiac MR on MAGNETOM Trio.



The active ECG electrodes

The benefits of MAGNETOM Trio in Cardiac MR

- Comprehensive clinical protocols for cardiac function, morphology, tissue characterization, flow quantification etc.
- 0.30 ppm homogeneity on a 40x40x40 cm FoV to ensure best fat saturation and TrueFISP imaging
- Fastest gradients on large FoV (200 T/m/s slew rate) for short examination times
- Dedicated cardiac array coil, 8-elements, iPAT compatible
- Active ECG electrodes with fiber optic signal transmission for high reliability
- syngo ergonomic user-interface so that you can concentrate on your examination and not the handling
- Inline Technology – processing instead of post-processing

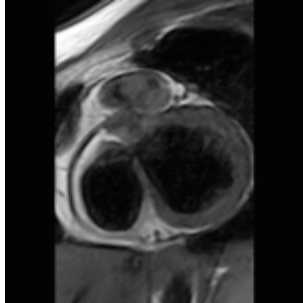
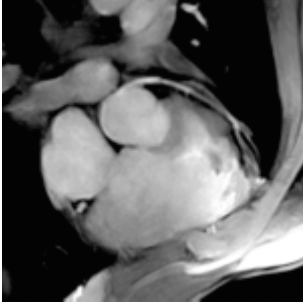
Easy cardiac examinations with syngo MR user-interface

- Visualization of 3 views at a time
- Automatic loading and display of cine datasets
- Ergonomic ECG display integrated into the interface
- Three point technique to specify any desired acquisition plane
- Image stamps providing you with all information at a glance



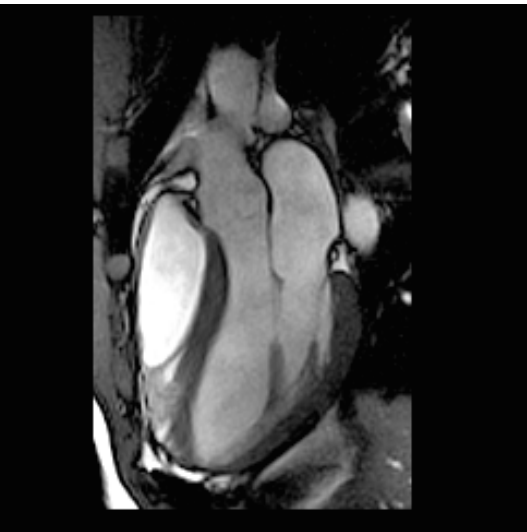
* This information concerns the use of contrast media that has not been approved by the Food and Drug Administration (21CFR99.103 (a) (1) (i)).

3T Unlimited



Coronary MR at 3T

Acquired with 1D PACE for motion correction and active ECG electrodes
 Cardiac array
 Left: 3D FLASH with FatSat*, pixel size 0.9 x 0.9 x 1.2 mm
 Right: 3D TSE dark blood, pixel size 1 x 1.5 x 1.2 mm

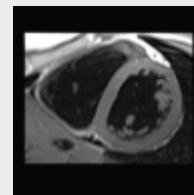
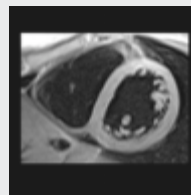
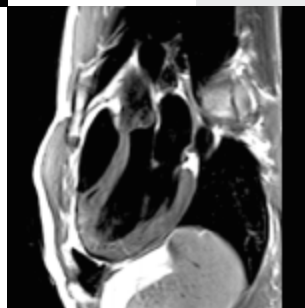


Left ventricular in-and out-flow tract view at 3T

Acquired in 12 s, 276 x 384 FoV
 Cardiac array
 Good morphological description of the in- and out-flow tract with TrueFISP, thanks to the high-homogeneity of the MAGNETOM Trio magnet.

Morphology – 2D TSE dark blood of the heart at 3T

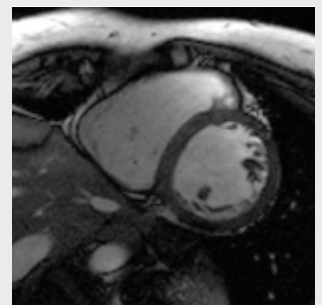
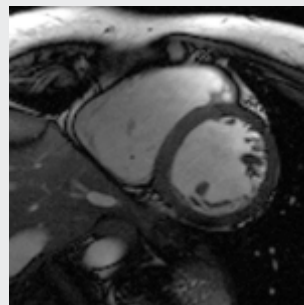
Cardiac array
 Right: 2D TSE dark blood imaging, short axis with and without FatSat
 Left: Long axis without FatSat



Short axis without FatSat Short axis with FatSat

Function with 2D cine TrueFISP of the heart at 3T

Cardiac array
 The large SNR of the TrueFISP and 3T magnetic field strength of MAGNETOM Trio results in the very good SNR of the heart at 3T in extremely short acquisition times.



Without iPAT (TA = 15 s) With iPAT 2 (TA = 8 s)
 Temporal resolution: 25 ms, 256 x 256



MAGNETOM Trio^[UHF Class] 3T Unlimited

Siemens' successful 3T strategy is called simply 3T Unlimited. Our 3T systems match all the performance parameters of a high-end 1.5T system: 3T Technology – Unlimited.

We have developed applications offering all the 3T benefits without the 3T limitations: 3T Applications – Unlimited.

We provide systems that include all the workflow benefits expected in a MAGNETOM: 3T Efficiency – Unlimited.

3T Technology – Unlimited

- Uncompromised homogeneity in a 40 x 40 x 40 cm field of view
- 8 fast RF-channels are standard
- Fastest gradients in the industry: 200 T/m/s

3T Applications – Unlimited

- 3TCare to reduce SAR and maximize anatomical coverage (Hyperechoes, iPAT, and body coil)
- Largest diversity of array coils
- iPAT to get a hold on susceptibility

3T Efficiency – Unlimited

- *syngo* – optimized for clinical workflow
- Inline Technology – processing instead of post-processing
- EVOLVE – a subscription for the future

The information in this document contains general descriptions of the technical options available, which do not always have to be present in individual cases. The required features should therefore be specified in each individual case at the time of closing the contract.

Siemens reserves the right to modify the design and specifications contained herein without prior notice. Please contact your local Siemens Sales representative for the most current information.

Original images always lose a certain amount of detail when reproduced.

Please contact in USA:

Siemens Medical Solutions USA, Inc.
51 Valley Stream Parkway
Malvern, PA 19355
Tel.: +1 888-826-9702
Tel.: 610-448-4500
Fax: 610-448-2254

Japan:

Siemens-Asahi
Medical Technologies Ltd.
Takanawa Park Tower 14 F
20-14, Higashi-Gotanda 3-chome
Shinagawa-ku
Tokyo 141-8644
(+81) 354238489

Asia:

Siemens Medical Solutions
Asia Pacific Headquarters
c/o Siemens Pte Ltd.
Block 28 Ayer Rajah Crescent No. 06-06
Singapore 139959
(+65) 6341 0990

Or contact your local Siemens sales representative

Siemens AG · Medical Solutions
Magnetic Resonance
Henkestr. 127, D-91052 Erlangen
Germany
Telephone: ++49 9131 84-0
www.SiemensMedical.com

Siemens **Medical Solutions** that help