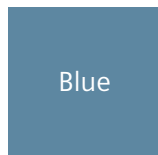


c.cam A Whole New Angle in Cardiology

Design and Comfort

A first of its kind product, c.cam features the most comfortable chair, the most appealing colors and state-of-the-art SPECT technology to bring together the most innovative nuclear cardiology system. c.cam has been internationally recognized for forward thinking and innovation in design. The small size and appropriate use of friendly colors and soft shapes in the patient environment make the system emotionally approachable for patients. Patients and physicians alike have taken notice of c.cam. And so have design institutions. In the last year, c.cam has won 5 distinguished awards for its smart and compact design.



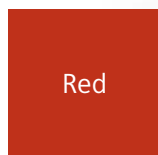
Blue



Beige



Gold



Red

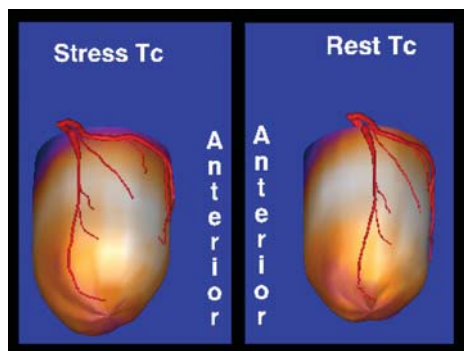


Choice of four colors to blend with your office space

Clinical Benefits

The relaxed atmosphere created by c.cam has obvious benefits. A relaxed patient moves less, creating less artifacts that can impair the ability to evaluate cardiac images. With c.cam, image quality is improved and diagnostic confidence increases.

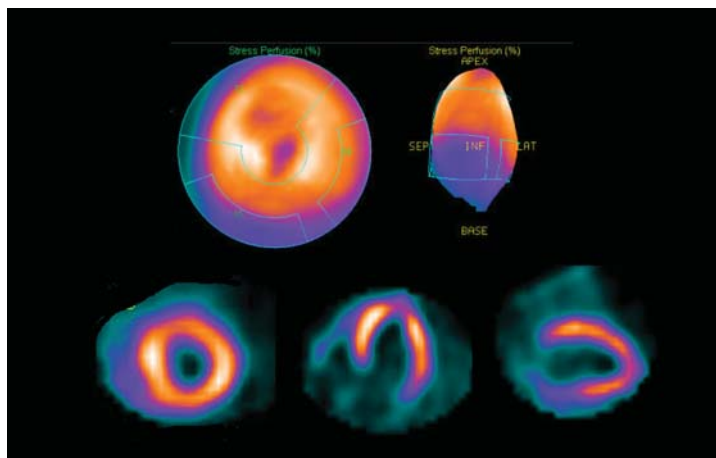
Its exclusive contoured patient chair allows c.cam to achieve patient comfort on multiple levels, both physical and psychological. Studies have proven that the reclined imaging position with bent knees leaves the patient more relaxed. Results attest that patient motion is decreased with c.cam and cardiac image quality is excellent in terms of contrast and resolution.



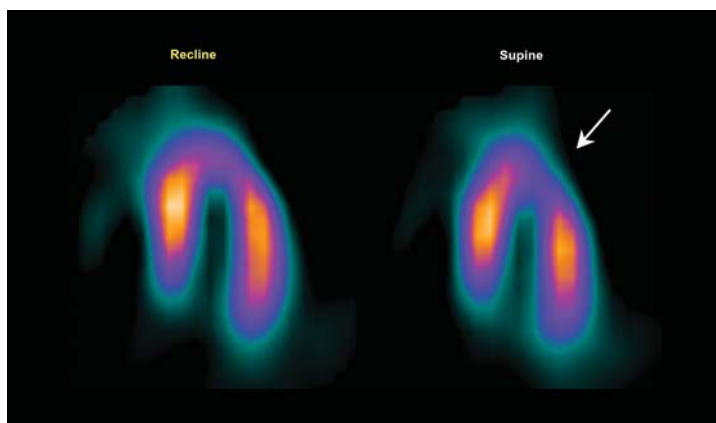
Emory Cardiac Toolbox stress/rest perfusion comparison with overlay of coronary artery tree.



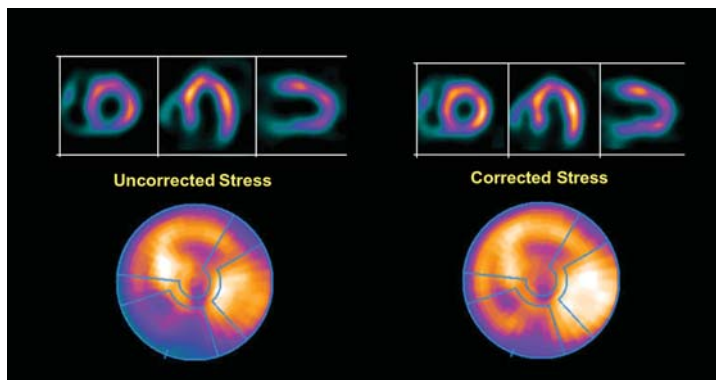
Optional Attenuation Correction*
*Pending 510(k) review. Not yet commercially available.



Stress study of a male patient with large heart shows complete coverage in HLA, VLA and SA with typical Cedars polar map display.



The reclined imaging position shows better wall separation due to less patient motion.



Typical attenuation corrected study with 4D-MSPECT display.



Easy to Install

- 2-day installation
- 8 ft. x 8 ft. system footprint
- Minimum room remodeling requirements



Easy to Learn

- 3-day on-site application training
- One-click acquisition
- Universal, intuitive *syngo* user interface
- Efficient processing workflows



Easy to Use

- Automated camera setup
- Minimal quality control requirements
- Intuitive hand controller
- Preprogrammed motions
- Predefined acquisition protocols



Easy to Buy

- Low-risk revenue opportunity
- Favorable lease conditions
- Optional 5-year warranty
- Complete configurations



ISO 13485 certified, meeting internationally recognized quality standards for good manufacturing practices.

c.cam is a registered trademark of Siemens Medical Solutions USA, Inc.

syngo is a registered trademark of Siemens AG, Medical Solutions.

Siemens reserves the right to modify the design and specifications contained herein without prior notice. Product performance depends on the choice of system configuration.

Please contact your local Siemens sales representative for the most current information or contact one of the addresses listed below.

© 2005 Siemens Medical Solutions USA, Inc.
All rights reserved.

All photographs © 2005 Siemens Medical Solutions, USA.
All rights reserved.

Note: Original images always lose a certain amount of detail when reproduced.

Note: *Leather chair material colors may vary. Contact your local Siemens sales representative for actual chair color samples.*

Siemens Medical Solutions USA, Inc.
Molecular Imaging
2501 N. Barrington Road
Hoffman Estates, IL 60195-5203 USA

Headquarters

Siemens Medical Solutions USA, Inc.
51 Valley Stream Parkway
Malvern, PA 19355-1406 USA
Telephone: +1-888-826-9702
www.usa.siemens.com/medical

Contact Addresses

Siemens Medical Solutions USA, Inc.
Molecular Imaging
2501 N. Barrington Road
Hoffman Estates, IL 60195-5203 USA
Telephone: +1-888-826-9702
www.siemens.com/medical

Siemens Medical Solutions USA, Inc.
Molecular Imaging
810 Innovation Drive
Knoxville, TN 37932-2751 USA
Telephone: +1-888-826-9702

Siemens **Medical**
Solutions that help

©2005, Siemens AG
Order No. A91MI-10029-2C-7600
Printed in USA
PA 1005/3