

Gated FDG PET Images of a Mouse Heart
1, 9, and 28 Days After Myocardial Infarction

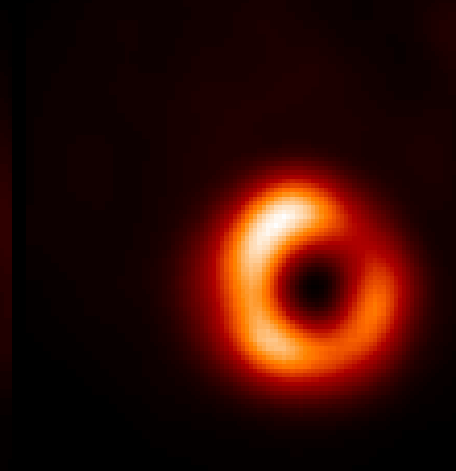
Day 1



Day 9



Day 28



PET and MRI Myocardial Infarction in Mice

25 g C57-BL6 mouse

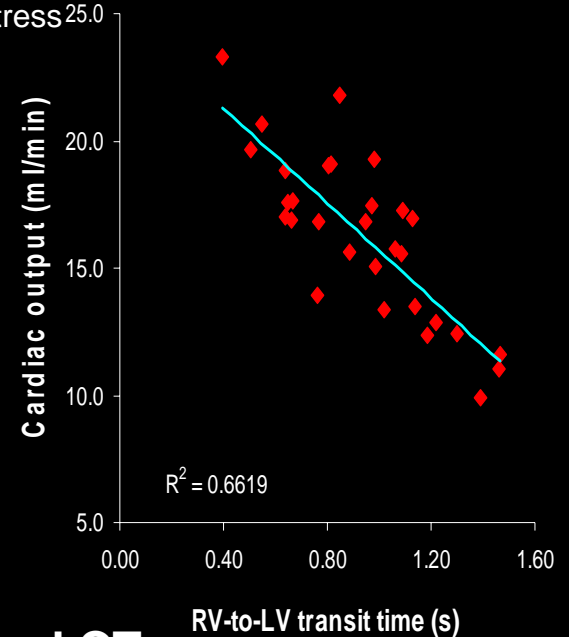
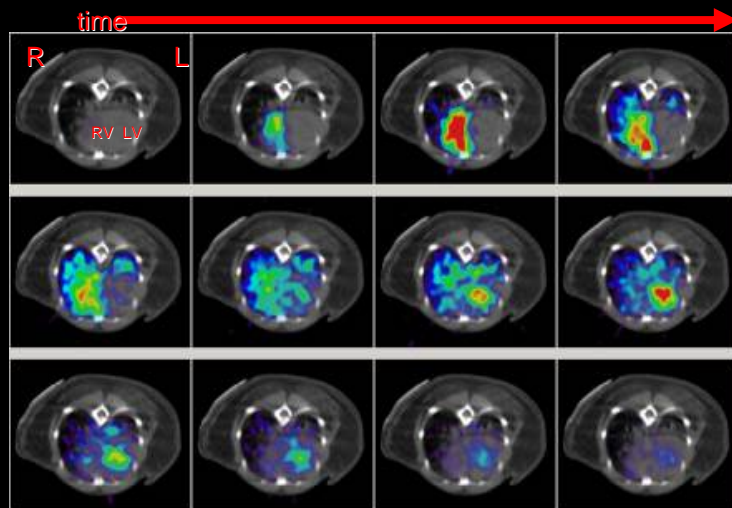
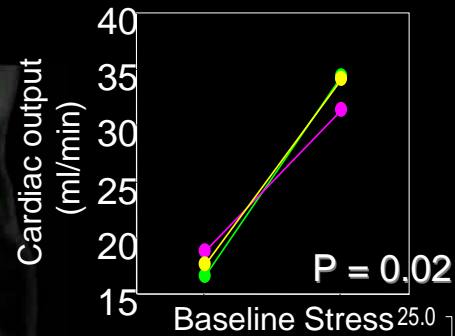
Scan protocol:

FDG

Data courtesy of University of Virginia, Stuart S. Berr, Ph.D.

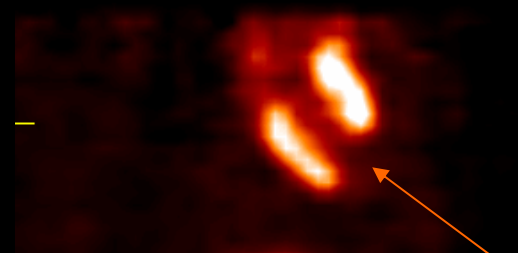
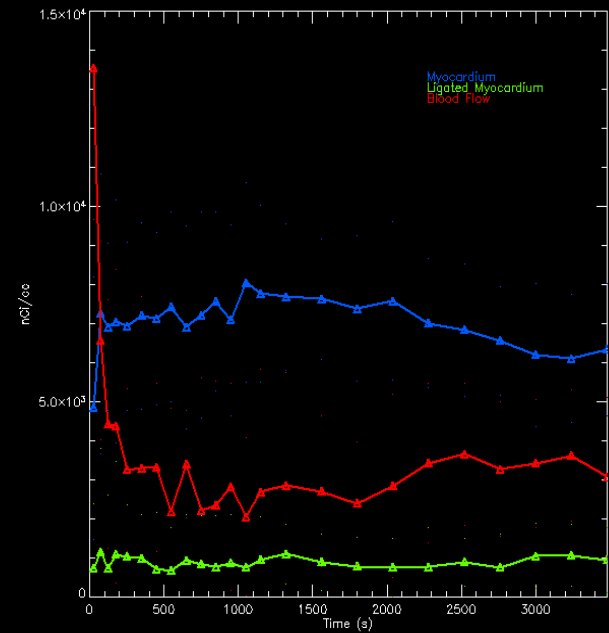
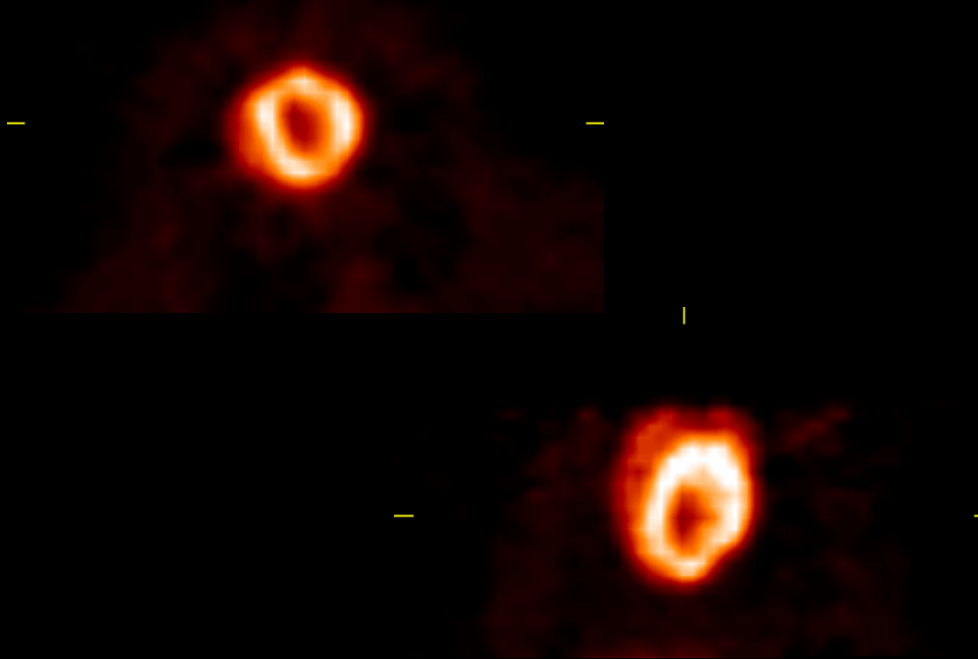


Increase of cardiac output by dobutamine



Dynamic microPET® (0.3s/frame) with co-registered CT

- 35 g C57BL/6 mouse
- RV-to-LV transit time: 1.46 s
- Heart rate: 390 1/min
- Cardiac output: 11.1 ml/min
- Stroke volume: 28.4 μ l



Myocardium with ligated coronary artery

Rabbit ¹⁸F-FCPHA

- Rabbit: coronary artery ligation
- Injected 2.0mCi ¹⁸F-FCPHA
- Scanned for 60 min
- ROI drawn on normal myocardium, injured myocardium and blood pool regions