

ACUSON AcuNav 8F Ultrasound Catheter

ACUSON AcuNav™ 8F Ultrasound Catheter

Ultrasound system and catheter specifications

Imaging Specifications

- Longitudinal side-fire imaging plane displays anatomy and devices in standard echocardiographic format
- 64-element Parallel Drive Phased Array imaging technology provides high resolution imaging in all modes
- 7 mm aperture
- Vector™ wide-view imaging format for increased anatomic information
- Sequoia system 2-D imaging frequencies:
 - 10.0MHz
 - 8.5MHz
 - 7.5MHz
 - 5.5MHz
- CV70 system 2-D imaging frequencies:
 - 9.0MHz
 - 7.0MHz
 - 5.0MHz
- Cypress system imaging frequencies:
 - 7.0MHz
 - 6.0MHz

Catheter Specifications

- 8 French catheter
- 110 cm insertable length
- Four-way steering in two planes: anterior-posterior, left-right. 160° rotation in each direction
- Tension control knob for holding desired catheter orientation
- SwiftLink™ Catheter Connector for one step system catheter set-up

Advanced Imaging Modes on Sequoia™ Ultrasound System

- Color Doppler for visualization of blood flow direction and velocity. Color Doppler imaging frequencies: 7.0MHz, 6.0MHz, 5.0MHz, 4.0MHz
- Continuous Wave (CW) Doppler for quantification of flow. CW Doppler imaging frequency: 5.0MHz
- Pulsed Wave (PW) Doppler for targeted blood flow interrogation. PW imaging frequencies: 5.0MHz, 4.0MHz
- DTI™ Doppler Tissue Imaging capability to monitor regional myocardial wall motion

Advanced Imaging Modes on CV70™ Cardiovascular System

- Color Doppler for visualization of blood flow direction and velocity. Color Doppler imaging frequencies: 5.2MHz
- Continuous Wave (CW) Doppler for quantification of flow. CW Doppler imaging frequency: 5.0MHz
- Pulsed Wave (PW) Doppler for targeted blood flow interrogation. PW imaging frequency: 5.2MHz
- DTI Doppler Tissue Imaging capability to monitor regional myocardial wall motion

Advanced Imaging Modes on Cypress™ Cardiovascular System

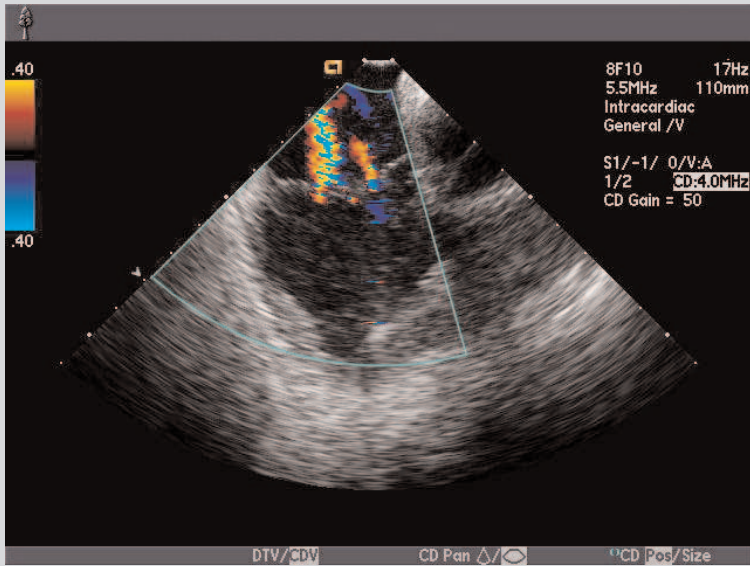
- Color Doppler for visualization of blood flow direction and velocity. Color Doppler imaging frequency: 5.4MHz
- Pulsed Wave (PW) Doppler for targeted blood flow interrogation. PW imaging frequency: 5.4MHz

Ultrasound System Features

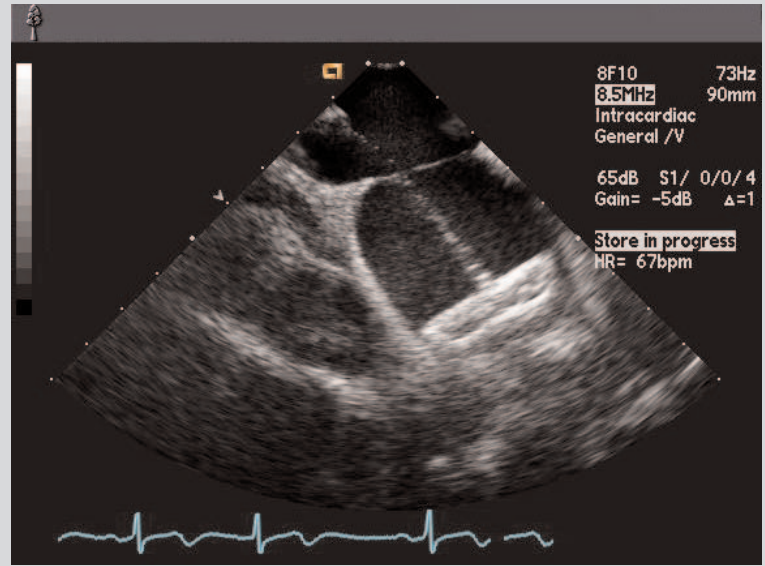
- Measurements and calculations performed on-line or off-line include volume, function and hemodynamics
- Compatible with the KinetDx™ solution* to provide digital dynamic clip review with full integration throughout the hospital enterprise
- Unique MultiHertz™ multiple frequency imaging from 5.0MHz to 10.0MHz provides the performance range of multiple catheters in a single catheter
- RES™ enhanced resolution imaging provides increased image resolution through user-selectable magnification to show greater detail in target areas

*Not available worldwide

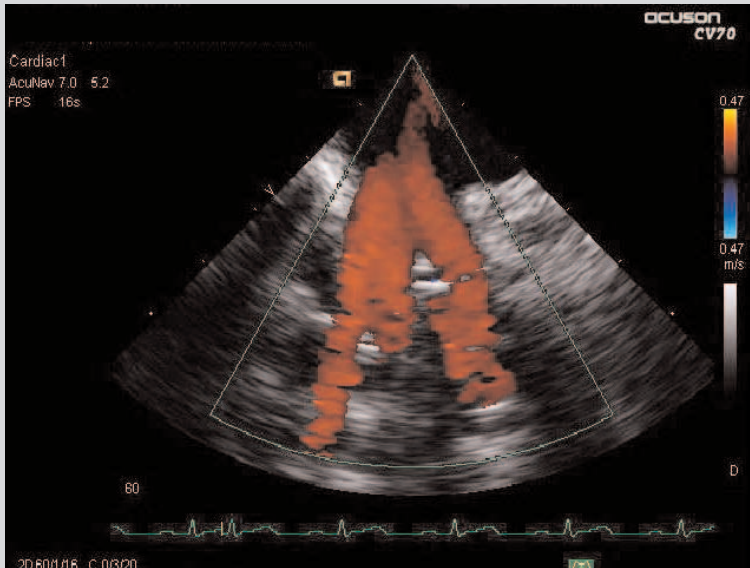
AcuNav 8F Ultrasound Catheter Sequoia, CV70 and Cypress Ultrasound System Images



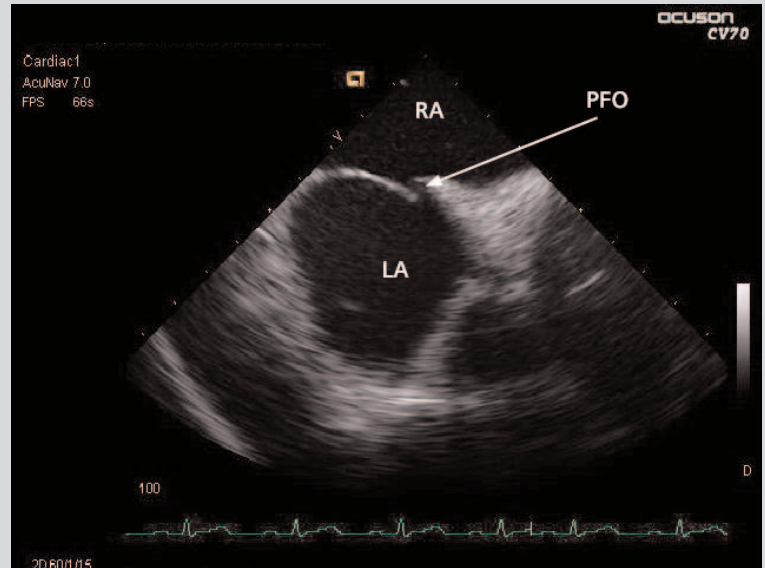
Color Doppler of the tricuspid valve



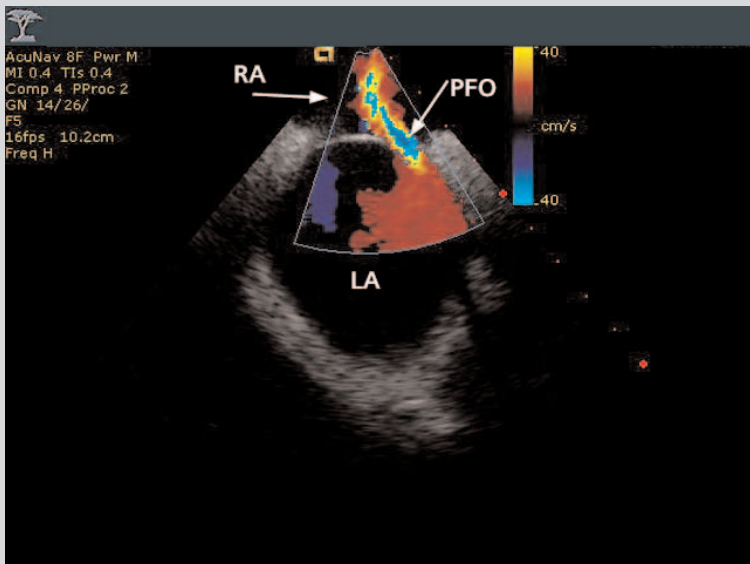
Visualization of closure device within the left atrium



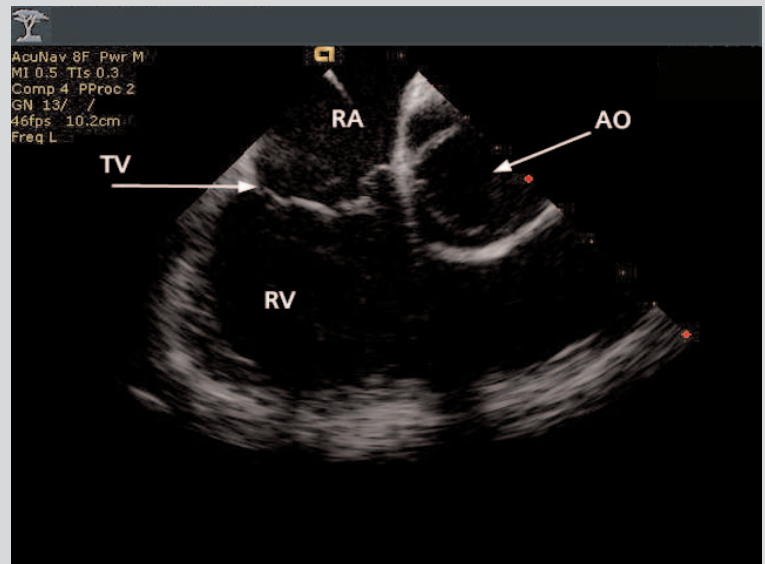
Color Doppler of the right inferior pulmonary vein from the left atrium



Intra-atrial septum with a small PFO



Color Doppler imaging of a PFO



Right atrium, tricuspid valve, and right ventricle

ACUSON, Sequoia, CV70, Cypress, MultiHertz, RES, and KinetDx are registered trademarks and AcuNav, SwiftLink, Vector and DTI are trademarks of Siemens Medical Solutions.

Siemens Medical Solutions USA, Inc.
Ultrasound Division
1230 Shorebird Way
P.O. Box 7393
Mountain View, CA 94039-7393 USA

Headquarters

Siemens Medical Solutions USA
51 Valley Stream Parkway
Malvern, PA 19355-1406 USA
Telephone: +1-888-826-9702
www.usa.siemens.com/medical

Contacts

Europe: +44 20 8479-7950
Asia Pacific: +65 6341-0990
Latin America: +1-786-845-0697

Siemens Medical Solutions USA, Inc.
Ultrasound Division
1230 Shorebird Way
P.O. Box 7393
Mountain View, CA 94039-7393 USA
Telephone: +1-888-826-9702

Siemens **Medical
Solutions** that help

© 05.2005, Siemens AG
Order No. A91004-M2410-B637-1-4A00
Printed in USA
DB 0505 15.0