

Today's High Tech With "Life Technology"

The Customer Care Program "Life" makes it possible: MAGNETOM Symphony MRI scanners can be upgraded to the latest technology advancements as of fall 2005.



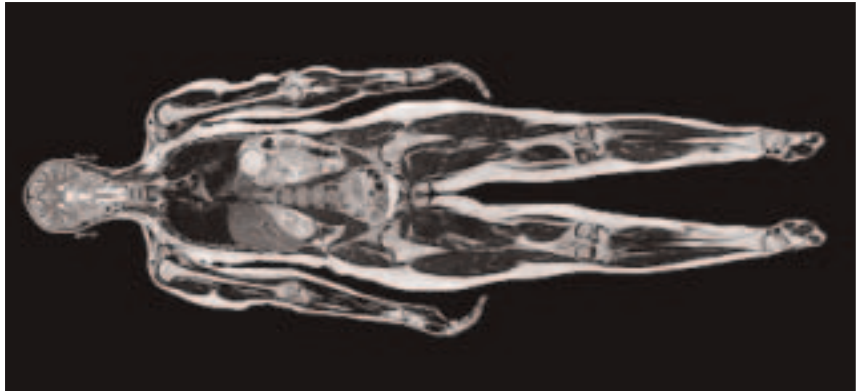
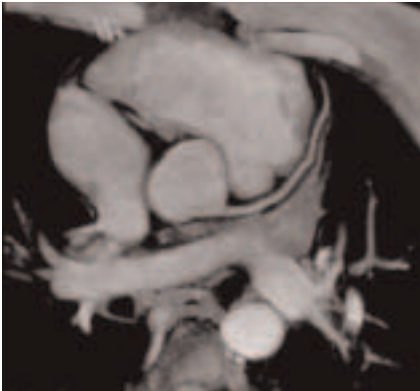
NEW TECHNOLOGY redesigned: MAGNETOM Symphony with Tim technology.

An investment in a new imaging device is always an investment in the future. Those who have been operating the high-end MAGNETOM® Symphony magnetic resonance imaging system still want to benefit from state-of-the-art developments, obtain a return on investment, and at the same time offer patients the highest standard of care available. With these considerations in mind and, due to the fact that since 1997, over 2 200 of these systems have been sold worldwide, Bernhard von Byern, Product Manager for magnetic resonance imaging at Siemens Medical Solutions, states: "As of September 2005, our customers will be able to upgrade their MAGNETOM Symphony systems with our Tim® (Total imaging matrix) technology. We are offering this upgrade as part of our 'Life' customer care program. The 'Life Technology' service component gives our customers the possibility to update their systems with the latest developments, thereby increasing system performance, and continually improving workflow."

Tim technology has revolutionized magnetic resonance imaging. Offering the fastest parallel imaging with PAT (parallel acquisition technique) factors of up to 12 for shorter scan times, and unmatched image quality due to the unique matrix coil design, patient repositioning and coil changes for different applications – from the smallest structures to whole-body acquisitions – are a thing of the past. More than 600 users worldwide are benefiting from the advantages of Tim technology. "Our customers are extremely satisfied with Tim. The installed systems have proven themselves in clinical routine, which underscores our credo 'Proven Outcomes,'" says von Byern.

Highest Image Quality, Optimized Workflow

In conventional MRI systems, coils may have to be changed and the patient repositioned depending on the region being examined. This takes time. Tim significantly reduces the examination time, accelerates the clinical



ALWAYS IMAGES WITH THE HIGHEST resolution from inside the body with the revolutionary Tim technology. The fastest parallel imaging with PAT factors of up to 12 also ensures shorter scan times.

process, and therefore improves the entire workflow.

"Thanks to Tim's flexibility, radiologists can freely select the relevant areas for the respective clinical question using a single-coil setup – from individual parts of the body to the entire anatomy. Up to 76 matrix coil elements can be combined in any way with up to 32 independent radiofrequency channels, extending the measurement range from 5 mm to 200 cm," says von Byern. "Whether neurological, abdominal, orthopedic, or cardiovascular examinations, the subtle matrix coil concept always delivers optimum, high-resolution images," according to von Byern. In addition to its ease of use and the shorter acquisition times provided by parallel imaging, Tim also provides better image quality than conventional systems."

The entire body can be scanned and diagnosed, and the radiologist can zoom in on individual areas for a more detailed view. "The number of 'feet-first' applications has been increased significantly, which is particularly beneficial to nervous or claustrophobic patients."

Well-Equipped for the Future

The upgrade of MAGNETOM Symphony to Tim technology includes the entire RF system

with up to 32 receiver channels, a telescoping patient table, a set of matrix coils, and a new computer system. "Depending on the age of the system, we might perform additional upgrades such as in the gradient system or the *syngo* user interface," reports von Byern. "We modernize not only the inside, but also the device chassis if requested. After all, the system design should be just as modern as the technology". For a complete upgrade, the on-site service technicians require less than two weeks. "In contrast to replacing a system, the Tim upgrade for MAGNETOM Symphony does not require constructional redesign, enabling the customer to start operating his system in the shortest time possible," says the MR specialist.

"With the Tim technology upgrade, MAGNETOM Symphony is optimally prepared for future developments, such as the new multichannel coils, which will significantly improve image resolution. With the new software, our customers have an open platform that integrates future innovations in software and clinical applications, just like they would with a new system. With "Life," our customers are always up to date and can therefore not only improve the technology on their systems, but also increase their productivity."

»With "Life," our customers benefit from the latest technologies and also improve their productivity.«

Bernhard von Byern,
MRI Systems Product Manager,
Siemens Medical Solutions,
Erlangen