



SIEMENS



Clinical Education
Class Schedule

December 2011 – September 2012

www.usa.siemens.com/healthcare

Answers for life.

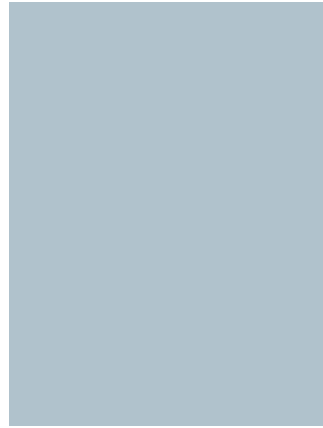










Table of Contents

Angiography – AXA.....	4	
Computed Tomography.....	5-6	
Electrophysiology Cardiology Systems (ECS) – Sensis.....	7	
Magnetic Resonance.....	8-9	
Mammography and Women’s Health	10	
Molecular Imaging – PET.....	11	
Molecular Imaging – SPECT.....	12-13	
Ultrasound	14	

SUMMARY OF SCHEDULE CHANGES

Modality	Class	Date	Change
AXA	Basic Artis Class	Jan 23-26	Added
AXA	Basic Artis Class	May 22-25	Added
AXA	Advanced syngo X Workplace	Mar 27-29	Added
AXA	Advanced Applications for DynaCT Cardiac	Mar 6-7	Added
AXA	Advanced Applications for DynaCT Cardiac	May 1-2	Added
AXA	Basic Artis Zeego Class	Apr 10-13	Added
AXA	Basic Artis Zeego Class	May 21-24	Added
AXA	Basic Artis Zeego Class	Jun 26-29	Added
CT	Basic Definition CT syngo Course	Jul 31-Aug 3	Added
CT	CT syngo Advanced Scanning Class	May 29-30	Added
ECS	Basic Sensis XP Class	May 22-25	Added
ECS	Basic Sensis XP Class	Jun 26-29	Added
ECS	Basic Sensis XP Class	Aug 7-10	Added
ECS	Basic Sensis XP Class	Apr 24-27	Cancelled
ECS	Basic Sensis XP Class	May 29-Jun 1	Cancelled
ECS	Basic Sensis XP Class	Jun 19-22	Cancelled
ECS	Basic Sensis XP Class	Jul 10-13	Cancelled
ECS	Basic Sensis XP Class	Jul 31-Aug 3	Cancelled
ECS	Basic Sensis XP Class	Aug 21-24	Cancelled
ECS	Advanced Sensis XP Class	Mar 6-9	Added
ECS	Advanced Sensis XP Class	Jun 12-15	Added
ECS	Advanced Sensis XP Class	Jul 31-Aug 3	Added
ECS	Advanced Sensis XP Class	Aug 28-31	Added
ECS	Advanced Sensis XP Class	Jun 26-29	Cancelled
ECS	Advanced Sensis XP Class	Jul 24-27	Cancelled
ECS	Advanced Sensis XP Class	Aug 14-17	Cancelled
MR	MR Basic syngo Class	May 29-Jun 1	Cancelled
MR	MR Advanced syngo Class	April 17-19	Added
MR	MR Advanced syngo Class	April 24-26	Cancelled
XP-Mammo	Novation Full-Field Digital Mammography Class	Jan 24-27	Cancelled

Angiography – AXA

Class	Location	Dates
<p>Basic Artis Class Course/Class ID #: 00261515 Approved for 13.5 Category A credits by the ASRT</p> <p>Key Topics Covered</p> <ul style="list-style-type: none"> • Basic operation of the Artis system • Safety aspects and troubleshooting • Patient registration • Exposure and fluoro modes including Road Map and Overlay Reference • Patient and image management • Quantification for vessel analysis and LV analysis • Archival to Network/PACS, CD/DVD, and film 	Cary, NC	<p>2011 Dec 6-9</p> <p>2012 Jan 24-27 Feb 28-Mar 2 Mar 20-23 Apr 3-6 Apr 24-27 May 8-11 Jun 12-15 Jul 10-13 Jul 31-Aug 2 Aug 14-17 Sep 11-14</p>
<p>Advanced <i>syngo</i>® X Workplace Class Course/Class ID #: 00261588 Approved for 10.5 Category A credits by the ASRT</p> <p>Key Topics Covered</p> <ul style="list-style-type: none"> • Introduction to the concept of 3D • Introduction to the prerequisites for image acquisition and good image quality • Transfer of image from the Artis to the <i>syngo</i> X Workplace • 3D image manipulation • VOI punching • Bookmarking • 3D image documentation to film and/or PACS will be reviewed 	Cary, NC	<p>2011 Nov 29-Dec 1</p> <p>2012 Jan 10-12 Feb 7-9 Mar 13-15 Apr 17-19 May 15-17 Jun 5-7 Jun 26-28 Jul 24-26 Aug 28-30 Sep 18-20</p>
<p>Advanced Applications for DynaCT Cardiac Course/Class ID #: 00265122 Approved for 9.0 Category A credits by the ASRT</p> <p>Key Topics Covered</p> <ul style="list-style-type: none"> • Cross-sectional cardiac anatomy • Ungated and gated DynaCT Cardiac acquisition • Acquisition of ungated DynaCT Cardiac • Acquisition of gated DynaCT Cardiac • Identifying 3D datasets in the browser • Performing secondary reconstructions • Perform left atrial segmentation • Transfer data to CD • Exchange data with Carto and Nav-X mapping systems 	Cary, NC	<p>Call 1-888-221-8010 opt 1, 2</p>

Computed Tomography

Class	Location	Dates
<p>Basic Definition CT syngo® Course Course/Class ID #: 00271932 Approved for 20 Category A credits by the ASRT</p> <p>Key Topics Covered</p> <ul style="list-style-type: none"> • Patient registration • Patient and image management (Patient Browser) • Viewing and modifying images, e.g., annotating, rotating, creating reference images (Viewing Task Card) • Filming (Filming Task Card) • Creating MIP and MPR reconstructions (3D Task Card) • Protocol building • Scanning parameters and their effect on image quality 	Cary, NC	<p>2011 Dec 6-9</p> <p>2012 Jan 24-27 Feb 28-Mar 2 Mar 20-23 Apr 17-20 May 15-18 Jun 19-22 Jul 24-27 Aug 28-31 Sep 25-28</p>
<p>CT Basic syngo® Class Course/Class ID #: 00261624 Approved for 20 Category A credits by the ASRT</p> <p>Key Topics Covered</p> <ul style="list-style-type: none"> • Patient registration • Patient and image management (Patient Browser) • Viewing and modifying images, e.g., annotating, rotating, creating reference images (Viewing Task Card) • Filming (Filming Task Card) • Creating MIP and MPR reconstructions (3D Task Card) • Protocol building • Scanning parameters and their effect on image quality 	Cary, NC	<p>2012 Jan 10-13 Jan 31-Feb 3 Mar 6-9 Apr 3-6 May 1-4 Jun 5-8 Jul 10-13 Aug 14-17 Sep 11-14</p>
<p>CT Advanced syngo® Class Course/Class ID #: 00261727 Approved for 13 Category A credits by the ASRT</p> <p>Key Topics Covered</p> <ul style="list-style-type: none"> • Lecture – 3D Essentials • Basic 3D Task Card • Advanced postprocessing techniques such as bone removal and advanced vessel analysis • syngo InSpace • Current SW applications such as Neuro DSA, syngo LungCARE, and more 	<p>Cary, NC</p> <p>Salt Lake City, UT</p>	<p>2011 Dec 13-15</p> <p>2012 Jan 24-26 Feb 28-Mar 1 Mar 20-22 Apr 10-12 May 1-3 Jun 12-14 Jul 31-Aug 1 Aug 21-23 Sep 18-20 May 22-24</p>

This listing is subject to change without notice. Status December 2011. Please visit the Clinical Training and Education website www.usa.siemens.com/clinicaleducation for the most current offerings. For questions about class offerings, schedule, and registration, call 1-888-221-8010 option 1.

Computed Tomography (continued)

Class	Location	Dates
<p>CT Cardiac Imaging Class Course/Class ID #: 00261728 Approved for 12 Category A credits by the ASRT</p> <p>Key Topics Covered</p> <ul style="list-style-type: none"> • Cardiac anatomy • Scanner requirements • Patient preparation • Fundamentals of coronary CTA including image reconstruction and image quality management • Postprocessing techniques including Calcium Scoring, Quantitative Coronary Analysis (QCA), and Left Ventricular Analysis (LVA) 	Cary, NC	<p>2011 Dec 6-8</p> <p>2012 Jan 31-Feb 2 Mar 13-15 Apr 17-19 May 15-17 Jun 19-21 Jul 24-26 Sep 11-13</p>
<p>CT syngo® Advanced Scanning Class Course/Class ID #: 00261626/00272116 Approved for 14 Category A credits by the ASRT</p> <p>Key Topics Covered</p> <ul style="list-style-type: none"> • Scanner software- and hardware-relevant updates for the new SOMATOM® CT system • Protocol building including injection protocol optimization • Head, neck, and body anatomy • Dose management in CT • 3D postprocessing updates with focus on object editor, bone removal, VRT, and Neuro DSA 	Cary, NC	<p>2011 Nov 29-30</p> <p>2012 Jan 10-11 Feb 21-22 Mar 27-28 Apr 24-25 Jun 26-27 Jul 17-18 Aug 28-29 Sep 25-26</p>
<p>syngo®.via CT Clinical Engines Course/Class ID #: 00269861 Approved for 16.5 Category A credits with the AHRA</p> <p>Key Topics Covered</p> <ul style="list-style-type: none"> • Product overview <ul style="list-style-type: none"> - Introduction to thin client/server concept • Basic and universal functionalities <ul style="list-style-type: none"> - Access bar - Worklist and workflow concept - Layouts - Data management - Etc. • CT workflows/engines <ul style="list-style-type: none"> - CT basic clinical engines including head, spine, abdomen, thorax, body, trauma, etc. - CT advanced clinical engines including Neuro, Vascular, Cardiac, and Oncology 	Cary, NC	<p>2011 Dec 20-22</p> <p>2012 Feb 7-9 Mar 20-22 May 8-10</p>

This listing is subject to change without notice. Status December 2011. Please visit the Clinical Training and Education website www.usa.siemens.com/clinicaleducation for the most current offerings. For questions about class offerings, schedule, and registration, call 1-888-221-8010 option 1.

Class	Location	Dates
<p>Basic Sensis XP Class Course/Class ID #: 00246347</p> <p>Key Topics Covered</p> <ul style="list-style-type: none"> • Recording and documentation of cardiac procedures utilizing the Sensis • Pressure sampling and cardiac calculations for routine and complex procedures • Monitoring screen setup and planning • Troubleshooting and system maintenance • Database structure and design for your facility 	<p>Malvern, PA</p>	<p>2011 Dec 6-9</p> <p>2012 Jan 10-13 Feb 7-10 Feb 28-Mar 2 Mar 13-16 Apr 3-6 Apr 24-27 May 8-11 May 29-Jun 1 Jun 19-22 Jul 10-13 Jul 31-Aug 3 Aug 21-24 Sep 11-14</p>
<p>Advanced Sensis XP Class Course/Class ID #: 00261618</p> <p>Key Topics Covered</p> <ul style="list-style-type: none"> • Database definitions and structure • Management and maintenance of the Sensis XP database • Troubleshooting and system maintenance • Report template composition and design • Ancillary management programs and their use <ul style="list-style-type: none"> – Configuration Manager – Security Manager – Statistics Manager – Configuration Panel 	<p>Malvern, PA</p>	<p>2011 Dec 13-16</p> <p>2012 Jan 31-Feb 3 Mar 20-23 Apr 17-20 May 15-18 Jun 26-29 Jul 24-27 Aug 14-17</p>

Magnetic Resonance

Class	Location	Dates
<p>MR Basic syngo® Class Course/Class ID #: 00261772 Approved for 17 Category A credits by the ASRT</p> <p>Key Topics Covered</p> <ul style="list-style-type: none"> • Patient registration • Patient and image management (Patient Browser) • Viewing and modifying images, e.g., annotating, rotating, creating reference images (Viewing Task Card) • Filming (Filming Task Card) • Creating MIP and MPR reconstructions (3D Task Card) • Merging images together from contiguous table positions (Composing Task Card) • Image subtraction • Sharing protocols using Phoenix • Protocol building (Exam Explorer) • Sequence parameter cards and measurement acquisition (Exam Task Card) • Siemens sequences and terminology 	<p>Cary, NC</p> <p>Salt Lake City, UT</p>	<p>2011 Dec 13-16</p> <p>2012 Feb 28-Mar 2 Mar 27-30 Apr 24-27 May 8-11 Jun 12-15 Jul 31-Aug 2 Sep 11-14</p> <p>2011 Nov 15-18</p> <p>2012 Jan 10-13 Feb 7-10 Mar 6-9 Apr 10-13 Jun 26-29 Jul 17-20 Aug 21-24</p>
<p>MR Basic syngo® Dot™ Class Course/Class ID #: 00263993 Approved for 16 Category A credits by the ASRT</p> <p>Key Topics Covered</p> <ul style="list-style-type: none"> • Patient registration • Patient and image management (Patient Browser) • Evaluate and/or modify images in the (Viewing Task Card) • Filming (Filming Task Card) • Creating MIP and MPR reconstructions (3D Task Card) • Merging images together from contiguous table positions (Composing Task Card) • Sharing protocols using Phoenix • Protocol building and optimal sequences (Exam Explorer) • Sequence parameter cards and measurement acquisition (Exam Task Card) • Dot Brain and Knee Engine simplification and speed improvement for examination workflow • Basic Dot configurations • Images using inline calculations 	<p>Cary, NC</p> <p>Salt Lake City, UT</p>	<p>2012 Feb 21-24 Apr 10-13 May 22-25 Jul 10-13 Sep 25-28</p> <p>2012 Mar 20-23 May 1-4 Jun 12-15 Jul 31-Aug 3</p>

This listing is subject to change without notice. Status December 2011. Please visit the Clinical Training and Education website www.usa.siemens.com/clinicaleducation for the most current offerings. For questions about class offerings, schedule, and registration, call 1-888-221-8010 option 1.

Mammography & Women's Health

Class	Location	Dates
<p>Novation Full-Field Digital Mammography Class Course/Class ID #: 00261802/0271896 Approved for Category A credits by the ASRT</p> <p>Key Topics Covered</p> <ul style="list-style-type: none"> • Digital terms/acronyms • Patient registration • Database management • Viewing Task Card • Filming Task Card • Quality control of the MAMMOMAT® <i>Novation</i>^{DR} • Creating new user accounts • Configuration of the AWS • Creating and modifying procedures • Mammography reading stations Overview • Basic functionality of the <i>syngo</i>® MammoReport 	Cary, NC	<p>2012 Jan 24-27 Mar 13-16 May 15-18 Sep 11-14</p>
<p>Inspiration Full-Field Digital Mammography Class Course/Class ID #: 00262219/00271900 Approved for Category A credits by the ASRT</p> <p>Key Topics Covered</p> <ul style="list-style-type: none"> • Digital terms/acronyms • Integrated generator control console • Patient registration • Image management through use of the Patient Browser • Modify, insert, and add views to patient exams • Annotations on patient images • Sending patient data across network nodes manually and through the use of auto transfers • Viewing task card functionality • Filming task card functionality • Quality Control of the MAMMOMAT® <i>Inspiration</i> 	Cary, NC	<p>2011 Dec 13-16</p> <p>2012 Jan 10-13 Feb 31-Mar 2 Mar 27-30 Apr 17-20 May 8-11 Jun 19-22 Jul 24-27 Aug 14-17 Sep 18-21</p>

Molecular Imaging – PET

Class	Location	Dates
<p>Basic Biograph® Class Course/Class ID #: 00261798 Approved for 18.5 Category A credits by the ASRT</p> <p>Key Topics Covered</p> <ul style="list-style-type: none"> • CT hardware • CT acquisition theory • CT reconstruction • syngo® Basics • 3D Task Card and Fusion • syngo TrueD • CT and PET theory • Biograph operation and maintenance 	Cary, NC	<p>2011 Nov 29-Dec 2</p> <p>2012 Jan 10-13 Mar 27-30 Apr 17-20 May 22-25 Jul 10-13 Aug 21-24 Sep 25-28</p>
<p>Advanced Biograph® Class Course/Class ID #: 00261800 Approved for 14 Category A credits by the ASRT</p> <p>Key Topics Covered</p> <ul style="list-style-type: none"> • CT image quality • Cross-sectional anatomy of the chest, abdomen, and pelvis • Cardiac cross-sectional anatomy • syngo® 3D Bone Removal • Contrast agents and procedures • syngo InSpace • syngo CT Circulation • Cedars and Corridor 4DM cardiac software applications • PET/Biograph image quality • Theory of list mode acquisition and processing • syngo TrueD • syngo Scenium 	Cary, NC	<p>2012 Apr 3-5</p>
<p>CT Basics for Hybrid Class Approved for 16 Category A credits by the ASRT</p> <p>Key Topics Covered</p> <ul style="list-style-type: none"> • CT hardware • CT acquisition theory • CT reconstruction • CT cross-sectional anatomy • CT image quality and troubleshooting • Patient registration • Protocol building • 3D Task Card • syngo® InSpace 	Cary, NC	<p>2011 Dec 13-15</p>

This listing is subject to change without notice. Status December 2011. Please visit the Clinical Training and Education website www.usa.siemens.com/clinicaleducation for the most current offerings. For questions about class offerings, schedule, and registration, call 1-888-221-8010 option 1.

Molecular Imaging – SPECT

Class	Location	Dates
<p>Basic syngo® Class (e.cam®/Symbia S®)</p> <p>Course/Class ID #: 00261789 Approved for 19 Category A credits by the ASRT</p> <p>Key Topics Covered</p> <ul style="list-style-type: none"> • Patient registration • Patient and image management (Patient Browser) • Command module • Modify workflows/customize activities • Acquisition interface including Analyzer Tab • Image manipulation with flexible display • DICOM • Organ-specific processing • Tomo processing (General, Cardiac) • Image manipulation (motion correction, reorientation) • Third-party cardiac quantification packages 	Cary, NC	<p>2011 Dec 13-16</p> <p>2012 Jan 31-Feb 2 Mar 20-23 May 15-18 Jun 12-15 Jul 24-27 Aug 7-10 Sep 11-14</p>
<p>Advanced syngo® Class (e.cam®/Symbia S®)</p> <p>Course/Class ID #: 00261791 Approved for 15.5 Category A credits by the ASRT</p> <p>Key Topics Covered</p> <ul style="list-style-type: none"> • syngo® configurations • Command module modifications • Creating new workflow categories • Protecting workflow templates • e.soft clean-up tool • Flexible display, building display pages • Identify 12 display objects for editing/creating pages • Identify DICOM types and how they correlate with workflow building • Configure the data selector activity • Building workflows and how to connect • Identify the 4 types of workflows • Image fusion techniques 	Cary, NC	<p>2011 Dec 6-9</p> <p>2012 Feb 28-Mar 2 Apr 10-13 May 8-11 Jun 5-8 Jul 17-20 Aug 14-17 Sep 18-21</p>

Molecular Imaging – SPECT (continued)

Class	Location	Dates
<p>Basic Symbia® T Class Course/Class ID #: 00246361 Approved for 24.5 Category A credits by the ASRT</p> <p>Key Topics Covered</p> <p>General Nuclear Medicine</p> <ul style="list-style-type: none"> • Patient registration • Patient and image management (Patient Browser) • Command module • Modify workflows/customize activities • Acquisition interface including Analyzer Tab • Image manipulation with flexible display • Organ-specific processing • Tomo processing (General, Cardiac) • Image manipulation (motion correction, reorientation) <p>CT Specific</p> <ul style="list-style-type: none"> • CT hardware • Theory & basics • Acquisition interfaces • Processing/display manipulation <p>Hybrid Specific</p> <ul style="list-style-type: none"> • System overview (Motion/PPM) • Launching SPECT-CT workflows • Review quality control recommendations • Image fusion techniques • Iterative processing techniques • Identify components of processing workflows • Image manipulation with SPECT-CT data 	<p>Cary, NC</p>	<p>2012 Jan 24-27 Feb 21-24 Mar 13-16 May 1-4 Jun 26-29 Jul 31-Aug 3 Aug 28-31</p>

This listing is subject to change without notice. Status December 2011. Please visit the Clinical Training and Education website www.usa.siemens.com/clinicaleducation for the most current offerings. For questions about class offerings, schedule, and registration, call 1-888-221-8010 option 1.

Ultrasound

Class	Location	Dates
<p>ACUSON SC2000™ Volume Imaging Ultrasound System – Advanced System Training Course/Class ID #: 00272159 Approved for 14.5 Category A Continuing credits with the SDMS</p> <p>Key Topics Covered</p> <ul style="list-style-type: none"> • Advanced image optimization • Color doppler • Pulsed wave doppler • Patient data management and review • Calculations • Stress echo 	<p>Cary, NC</p>	<p>2011 Dec 12-13</p> <p>2012 Jan 16-17 Feb 14-15 Mar 6-7 Apr 10-11</p>
<p>ACUSON SC2000™ Ultrasound System – Real-time Volume Imaging in Clinical Practice Course/Class ID #: 00270376 Approved for 12 Category A Continuing credits with the SDMS</p> <p>Key Topics Covered</p> <ul style="list-style-type: none"> • Automated 3D left ventricular function (eSieLVA) • Volume color doppler • 3D right ventricular ejection fraction 	<p>Cary, NC</p>	<p>2012 Jan 19-20 Apr 12-13</p>

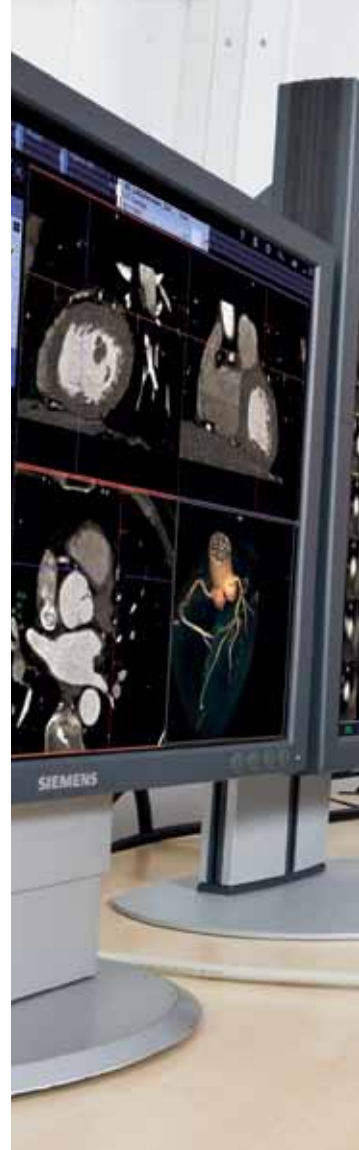
On account of certain regional limitations of sales rights and service availability, we cannot guarantee that all products included in this brochure are available through the Siemens sales organization worldwide. Availability and packaging may vary by country and is subject to change without prior notice. Some/All of the features and products described herein may not be available in the United States.

The information in this document contains general technical descriptions of specifications and options as well as standard and optional features which do not always have to be present in individual cases.

Siemens reserves the right to modify the design, packaging, specifications and options described herein without prior notice. Please contact your local Siemens sales representative for the most current information.

Note: Any technical data contained in this document may vary within defined tolerances. Original images always lose a certain amount of detail when reproduced.

Order No. A9119-12300-C1-4A00
Printed in USA 12-2011 | All rights reserved
© 2011 Siemens Medical Solutions USA, Inc.



Global Siemens Headquarters

Siemens AG
Wittelsbacherplatz 2
80333 Muenchen
Germany

Local Contact Information

Siemens Medical Solutions USA, Inc.
51 Valley Stream Parkway
Malvern, PA 19355-1406, USA
Phone: +1-888-826-9702
www.usa.siemens.com/healthcare

www.siemens.com/healthcare