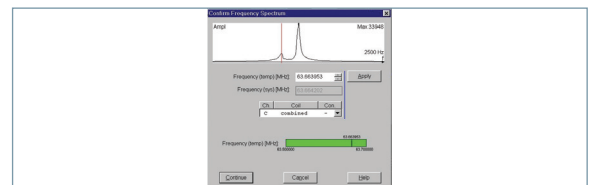
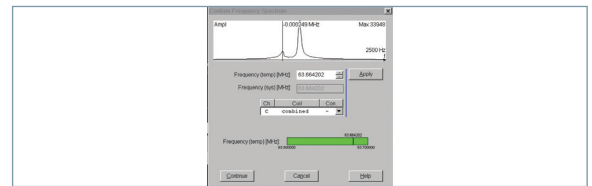
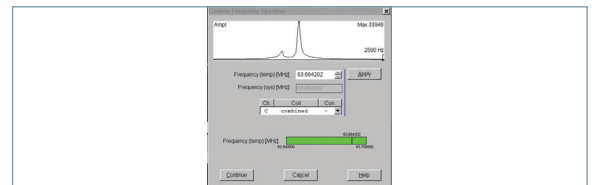
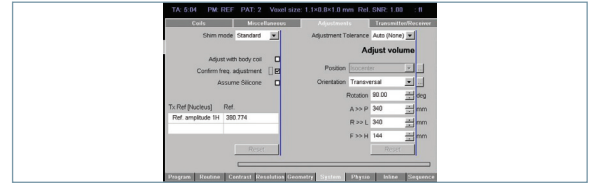


# Confirm Frequency

1. Open the sequence and on the system tab/ adjustments make sure that confirm frequency is selected.
2. Position slices and apply the scan. The system frequency will adjust.
3. On the pop-up screen, look for your fat and water peaks. On Siemens systems, fat will be the peak on the left and water will be the peak on the right.
4. For fat saturation, the tick mark should be over the water peak.
5. Hover your mouse to the peak on the left to ensure you see 220 for 1.5T or 440 for 3T. If this is the case, select continue to start the scan.
6. If not, then left mouse click to the center of the peak on the left.
7. In the frequency temp down below, add 220 (1.5T) or 440 (3T) to the last three digits of the frequency (temp). Press apply, then continue to start the scan.



Frequency (temp) [MHz]: 63.664173

## Confirm Frequency

[www.usa.siemens.com/healthcare](http://www.usa.siemens.com/healthcare)

**SIEMENS**