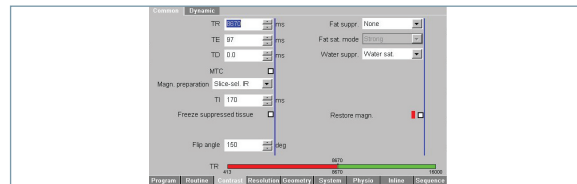
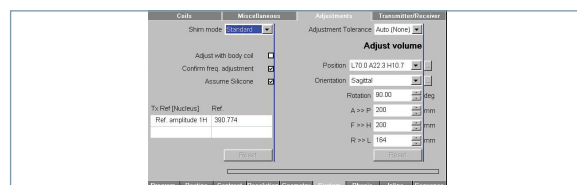


# Water or Silicone Suppression

1. If you would like to suppress either water or silicone, then make sure to select water suppression on the contrast tab of your sequence.



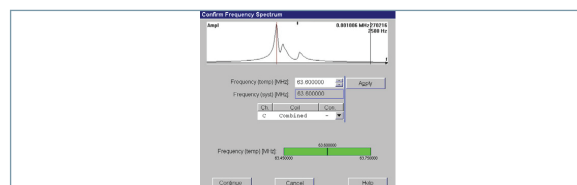
2. Ensure that **confirm frequency** is selected on the system tab/adjustments.



3. If you are certain that your patient has silicone implants, ensure that **assume silicone** is selected on the system tab/adjustments.

4. Position slices and apply the scan; system frequency will adjust.

5. On the pop-up screen look for your silicone, fat, and water peaks. On Siemens systems, silicone will be the far left, fat in the middle, and water to the right.



6. If you are trying to suppress water, left mouse click to the peak on the far right, select **Apply** then **Continue**.

7. If you are trying to suppress silicone, left mouse click to the peak on the far left, select **Apply** then **Continue**.

## Water or Silicone Suppression

[www.usa.siemens.com/healthcare](http://www.usa.siemens.com/healthcare)

**SIEMENS**