

Introducing Codonics Infinity™ Medical Imager Server

Infinity seamlessly integrates with SYNGO
for DICOM and raw data storage and retrieval.

www.usa.siemens.com/healthcare

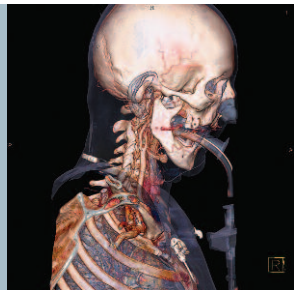
SIEMENS

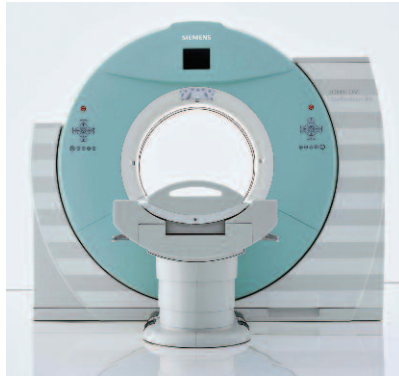
Infinity combines power and simplicity in a highly-reliable DICOM extended storage server. Infinity provides exceptionally fast, local storage of standard DICOM and Siemens CT raw data in an incredibly compact unit.



ADVANCED DICOM AND RAW DATA STORAGE:

- DICOM 3.0 (store, storage commit, query/retrieve)
- DICOM store-forward (auto-routing)
- "On-the-fly" lossless image compression (increases storage up to 2.5X)
- Siemens raw data support
- Multi-modality connectivity





Workflow Advantages:

- High transfer rates enable rapid storage of DICOM datasets directly from any SYNGO workstation
- Ideal as transitional storage for CT system upgrades when PACS isn't ready to accommodate added image volume
- Quickly store all phases of a cardiac study on Infinity when only a subset are typically stored to PACS
- Auto-routing of DICOM data*

* Feature coming Q3 2009

Design Features:

- Small and compact chassis allows it to fit in virtually any environment including mobile
- Low cost of ownership and operation
- Scalable configurations
- Robust Oracle® database and redundant RAID array for secure image storage
- Web-based administration with email, web, RSS, visual and audible alerts
- Permanent and temporary archive partitioning is available

Clinical Advantages:

- Convenient storage of raw data for post-processing
- Easy access to prior studies for immediate comparison
- Provides long-term access to raw data for research protocols and future technology
- Basic web viewer and advanced remote viewer available



C	Feature	LX
3 TB	<i>Capacity</i>	8 TB
25 MB/sec	<i>Speed</i>	50+ MB/sec
Redundancy	<i>Reliability</i>	High Redundancy
Easy	<i>Setup</i>	Easy
Easy	<i>Serviceability</i>	Easy
Yes	<i>Remote Viewer</i>	Yes
5.5" x 10.2" x 10.2"	<i>Size</i>	8.7" x 26" x 16.9"
Yes	<i>DICOM</i>	Yes
Yes	<i>Raw Data</i>	Yes



Part Numbers

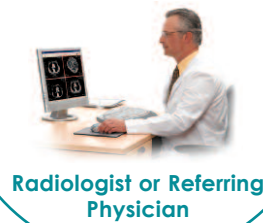
Infinity C – **COINFCSIEM02**

Infinity LX – **COINFLXSIEM02**

Codonics Infinity™

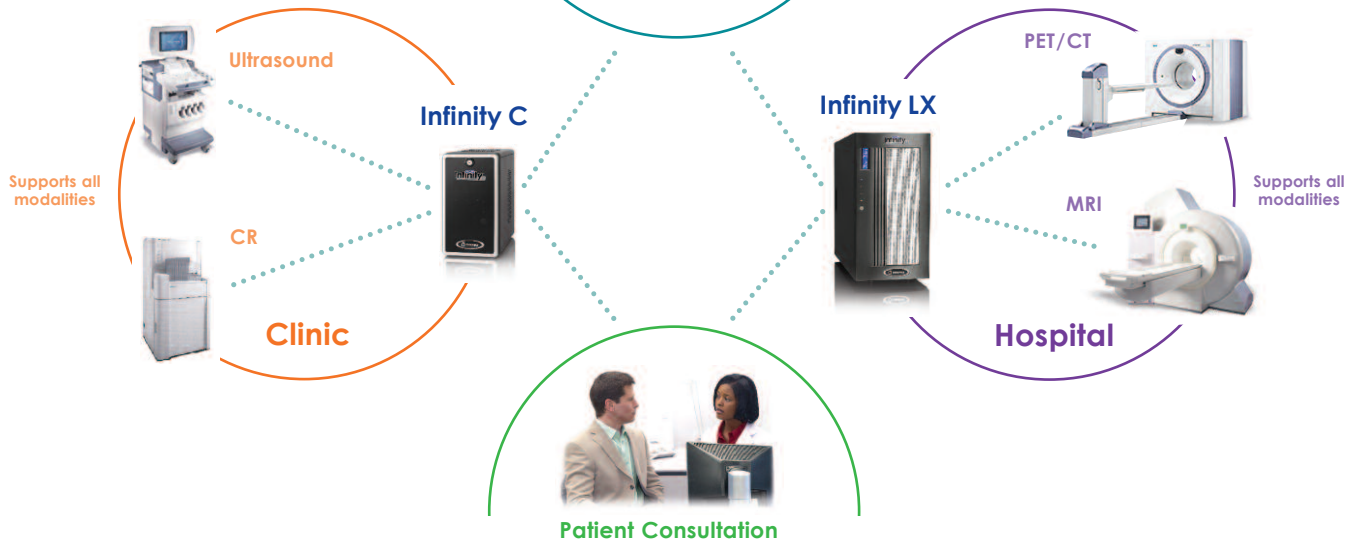
A new dimension in image storage.

Infinity C is the ideal low-cost storage solution for clinics and hospitals. Redundant RAID hardware designed for years of dependable operation.



Radiologist or Referring Physician

Infinity LX is ideal for facilities that need fast local storage to accommodate large data sets or as a complement to PACS. The highly redundant hardware design includes RAID, power supplies and cooling fans to maximize uptime.



On account of certain regional limitations of sales rights and service availability, we cannot guarantee that all products included in this brochure are available through the Siemens sales organization worldwide. Availability and packaging may vary by country and is subject to change without prior notice. Some/All of the features and products described herein may not be available in the United States.

The information in this document contains general technical descriptions of specifications and options as well as standard and optional

features which do not always have to be present in individual cases.

Siemens reserves the right to modify the design, packaging, specifications and options described herein without prior notice. Please contact your local Siemens sales representative for the most current information.

Note: Any technical data contained in this document may vary within defined tolerances. Original images always lose a certain amount of detail when reproduced.

Global Business Unit

Siemens AG
Medical Solutions
Special Systems
Henkestrasse 127
DE-91052 Erlangen
Germany
Phone: +49 9131 84-0
www.siemens.com/healthcare

Global Siemens Headquarters

Siemens AG
Wittelsbacherplatz 2
80333 Muenchen
Germany

Global Siemens
Healthcare Headquarters

Siemens AG
Healthcare Sector
Henkestrasse 127
91052 Erlangen
Germany
Phone: +49 9131 84-0
www.siemens.com/healthcare

Legal Manufacturer

Codonics Inc.
17991 Englewood Drive
Cleveland, OH 44130
USA

for the products
Infinity C
Infinity LX

Distributed by
Siemens Medical Solutions USA, Inc.
51 Valley Stream Parkway
Malvern, PA 19355-1406
USA

www.siemens.com/healthcare