



Clinical Education 2009

CT training for physicians and technologists

Answers for life.

SIEMENS

Clinical Education 2009

Maximizing your skills and clinical know-how is the key for becoming excellent. Choose from a wide range of education programs – from application training to clinical education. Benefit from the professional knowledge of our education specialists and clinical partners. Learn in workshops, fellowships, and conferences or even via e-Learning tools. Optimize your clinical skills to use the full potential of your system.

www.siemens.com/SOMATOMEducate



Clinical Workshops

A clinical workshop is a two to five-day training program for up to twenty participants, which is held by a faculty of clinical experts and includes lectures about a specific clinical specialty and live examinations. Hands-on sessions can also be included.

In cooperation with many renowned hospitals, we are pleased to offer continuing CT training programs as part of our commitment to keep you at the forefront of clinical CT imaging. CME credits are available at many of them.

Our clinical partners:

- Chirurgisches Institut, Gesundheitszentrum Villa am Roseneck, Berlin / Germany
- Friedrich-Alexander-University Erlangen-Nuremberg / Germany
- Ludwig-Maximilians-University Munich / Germany
- Marie Lannelongue Surgical Center, Paris / France
- Medical University of Vienna / Austria
- University of Zurich / Switzerland
- Virtual Colonoscopy Training Center, Roeselare / Belgium
- Westfälische Wilhelms University Münster / Germany

To find more information about the courses and to register for a dedicated course, please go to:
www.siemens.com/SOMATOMEducate
(Clinical Workshops)



Workshop title	Location	Course language	Course director
Virtuelle CT-Kolonoskopie	Berlin / Germany	German	Prof. Bernd Lünstedt
Clinical Workshop on Cardiac CT	Erlangen / Germany	English	Prof. Dr. Stephan Achenbach
Clinical CTA Interpretation Course	Erlangen / Germany	English	Prof. Dr. Stephan Achenbach
Clinical Workshop on Cardiac CT	Munich / Germany	English	PD Dr. Christoph Becker Dr. Alexander Leber
Clinical Workshop on Cardiac CT	Paris / France	English	Dr. Jean Francois Paul
CT-Kolonographie-Workshop	Vienna / Austria	German	Dr. Thomas Mang
Hands-on-Workshop Herz-CT	Zurich / Switzerland	German	PD Dr. Hatem Alkadhi
CT Colonography Workshop	Brussels / Belgium	English / French	Dr. Philippe Lefere Dr. Stefaan Gryspeerdt
Clinical Workshop on State-of-the-Art Applications	Münster / Germany	English	PD Dr. Johannes Weßling Dr. Harald Seifarth
Clinical Workshop on Dual Energy	Forchheim / Germany	German	Dr. Thorsten Johnson

Your benefits:

- Enjoy a relaxed and failure-tolerating atmosphere in the classroom.
- Bring your knowledge to a high level of confidence.
- Experience clinically proven workflows for your daily routine work.
- Start to use your gained expertise.



Clinical Fellowships

During a clinical fellowship, you can improve your medical knowledge and skills. A clinical expert will guide you through their daily workflow and show you, how examinations and reports are performed on site. This hands-on training moves along at the pace of the hospital, giving you a real-life experience.

To find more information about fellowships, please go to:
www.siemens.com/SOMATOEducate
(Clinical Fellowships)

To arrange for a clinical fellowship, please contact your local Siemens representative.

Your benefits:

- Learn in a one-on-one mentored way from the clinical experts.
- Experience daily routine.
- Exchange your clinical knowledge.

Scanner	Country	City	Institute
SOMATOM Definition	Germany	Munich	German Heart Center Munich
	Monaco	Monte Carlo	Monaco Cardio-Thoracic Center
	Germany	Tübingen	University Hospital of Tübingen
SOMATOM Definition AS+	Germany	Werne	Radiologie Unna Werne
SOMATOM Sensation 64	Germany	Frankfurt	Cardiologic Center Bethanien Frankfurt
	Germany	Bottrop	Knappschaftskrankenhaus Bottrop
SOMATOM Emotion 16	Austria	Vienna	Otto Wagner Spital
SOMATOM Emotion 6	Germany	Cologne	Praxis Dr. Brochhagen



Clinical Hands-On Workshops at Conferences

A clinical Hands-On Workshop (HOW) is a one to two-hour training program for ten to thirty participants, which focuses on a specific clinical specialty and is held by a faculty of clinical experts. It includes lectures and hands-on sessions.

Visit the new Experience Lounge at ECR 2009 to learn more about exciting *syngo* applications in CT, MR and Molecular Imaging:

- try our innovative applications
- discover state-of-the-art techniques
- guided by clinical experts.

For RSNA 2009 we are inviting you again to join the sessions in the Experience Lounge at the booth. Each session will explore different modality applications as well as clinical specialties like cardiology and oncology.

For more information and to register for the sessions, please visit our website:
www.siemens.com/SOMATOMEducate
(Clinical HOWs@Conferences)

Your benefits:

- Refresh your skills.
- Learn how to push your systems capabilities to the most.
- Find out how to speed up your daily workflow.



Application Training

At Siemens, we take our commitment to our customers and their patients seriously. Operating an advanced system to its best capabilities needs a properly trained user.

The Clinical Education specialists from Siemens provide comprehensive services to help you operate your products at their best performance. We offer face-to-face application training as well as classroom training during the entire product lifecycle to help with new solutions and provide support for existing applications and functionalities.

Our Applications Training and Support offerings are available on an ongoing basis to help you instruct new personnel effectively and to refresh the capabilities of existing operators.

Your benefits:

- Keep physicians and technologists up to date with the latest applications and technologies.
- Improve examination results by utilizing all existing functionalities.
- Enjoy easy transfer of basic knowledge to new personnel.
- Refresh existing knowledge.



Clinical e-Learning

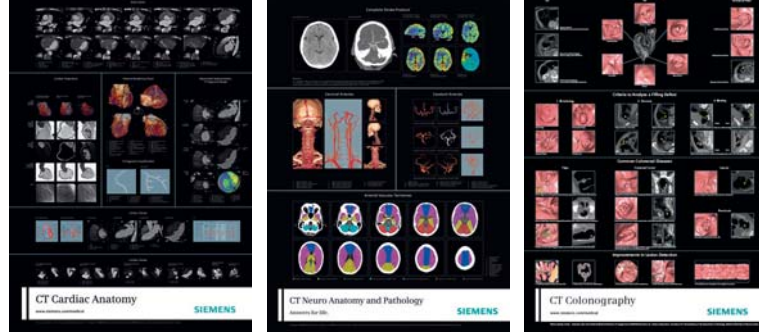
Do you prefer to learn at your own pace, at your own convenient time and place? You will find product trainings as well as clinical advisors and tutors in our e-Learning campus. You can order them free of charge!

Visit our e-Learning campus and choose from a variety of e-Learning trainings from different modalities:

www.siemens.com/SOMATOMEducate
(e-Learning)

Your benefits:

- Learn at your own pace, convenient time and place.
- Gain additional knowledge through a learning process which is optimized to your personal preferences.
- Earn CME credits for many of them.



To order a clinical poster, please go to:
www.siemens.com/ct-poster

Siemens Healthcare is happy to provide you with a brilliant way to educate staff and patients about the human anatomy, seen through a CT scanner. Perfect for the patient waiting room, the staff lounge, or the wall of the reading room, those poster show the wide range of views that are easily created from a CT examination, with all key anatomy clearly labeled.

Clinical Poster Gallery

CT Cardiac Anatomy

Based on axial MIP reconstructions, all anatomic structures of the heart are described. Graphics as well as VRT images explain the 15 segment classification of AHA (American Heart Association). Moreover, 17 segments of the left ventricle and their relation to the contributing coronaries are displayed.

CT Colonography

In cooperation with our partners from the Medical University of Vienna, Austria, Siemens Healthcare produced a poster demonstrating the spectrum of CTC findings in colon diseases. All diseases are briefly described and extensively illustrated in 3D and 2D CT images, guiding and assisting users in the reporting of findings in CTC examinations.

CT Neuro Anatomy

Together with Neuro experts from Münster University, Münster, Germany, Siemens Healthcare designed a poster focusing on anatomy and CT-specific landmarks relevant for CT angiographies of neck and head vessels. Information about a recommended stroke workflow is explained.

Your benefits:

- Complex anatomical structures are easily explained.
- Standard projections are clearly labeled.
- Typical CT processing types like MPR, MIP, and VRT are visualized.

Acknowledgements:

Cardiologisches Centrum Bethanien, Germany
Friedrich-Alexander University Hospital
Erlangen-Nürnberg, Germany
General Hospital AKH Vienna, Austria
German Heart Center Munich, Germany
Knappschaftskrankenhaus Bottrop, Germany
Marie Lannelongue Hospital Paris, France
Monaco Cardio-Thoracic Center, Monte Carlo
Otto Wagner Spital Vienna, Germany
Privatpraxis für Darmdiagnostik am Roseneck
Berlin, Germany
Radiologie Unna-Werne, Germany
Radiology Practice Brochhagen, Köln, Germany
University Hospital Großhadern, Germany
University Hospital Münster, Germany
University Hospital Tübingen, Germany
University Hospital Zürich, Switzerland
Virtual Colonoscopy Trainings Center, Belgium

On account of certain regional limitations of sales rights and service availability, we cannot guarantee that all products included in this brochure are available through the Siemens sales organization worldwide. Availability and packaging may vary by country and are subject to change without prior notice. Some/All of the features and products described herein may not be available in the United States.

The information in this document contains general technical descriptions of specifications and options as well as standard and optional features which do not always have to be present in individual cases.

Siemens reserves the right to modify the design, packaging, specifications, and options described herein without prior notice. Please contact your local Siemens sales representative for the most current information.

Note: Any technical data contained in this document may vary within defined tolerances. Original images always lose a certain amount of detail when reproduced.

The statements contained herein are based on the actual experience of Siemens customers. Siemens maintains data on file to support these claims. However, these statements do not suggest or constitute a warranty that all product experience will yield similar results. Results may vary, based on the particular circumstances of individual sites and users.

Please find fitting accessories:
www.siemens.com/medical-accessories

Local Contact Information

In the USA:

Siemens Medical Solutions USA, Inc.
51 Valley Stream Parkway
Malvern, PA 19355
Phone: +1 888 826 9702
Phone: +1 610 448 4500
Fax: +1 610 448 2554

In Asia:

Siemens Medical Solutions
Asia Pacific Headquarters
The Siemens Center
60 MacPherson Road
Singapore 348615
Phone: +65 6490 8182
Fax: +65 6490 8183

In Germany:

Siemens AG
Healthcare Sector
Computed Tomography
Siemensstr. 1
91301 Forchheim
Germany
Phone: +49 9191 18 0
Fax: +49 9191 18 9998

Global Siemens Headquarters

Siemens AG
Wittelsbacherplatz 2
80333 Muenchen
Germany

Global Siemens Healthcare Headquarters

Siemens AG
Healthcare Sector
Henkestr. 127
91052 Erlangen
Germany
Phone: +49 9131 84-0
www.siemens.com/healthcare

Legal Manufacturer

Siemens AG
Wittelsbacherplatz 2
DE-80333 Muenchen
Germany

www.siemens.com/healthcare