



**Full ultrasound breast volumes. Faster scans.  
Streamlined workflow.**

**ACUSON S2000 Automated Breast Volume Scanner**

Answers for life.

**SIEMENS**





## An automated whole breast solution.

Reduced acquisition time. Streamlined workflow.

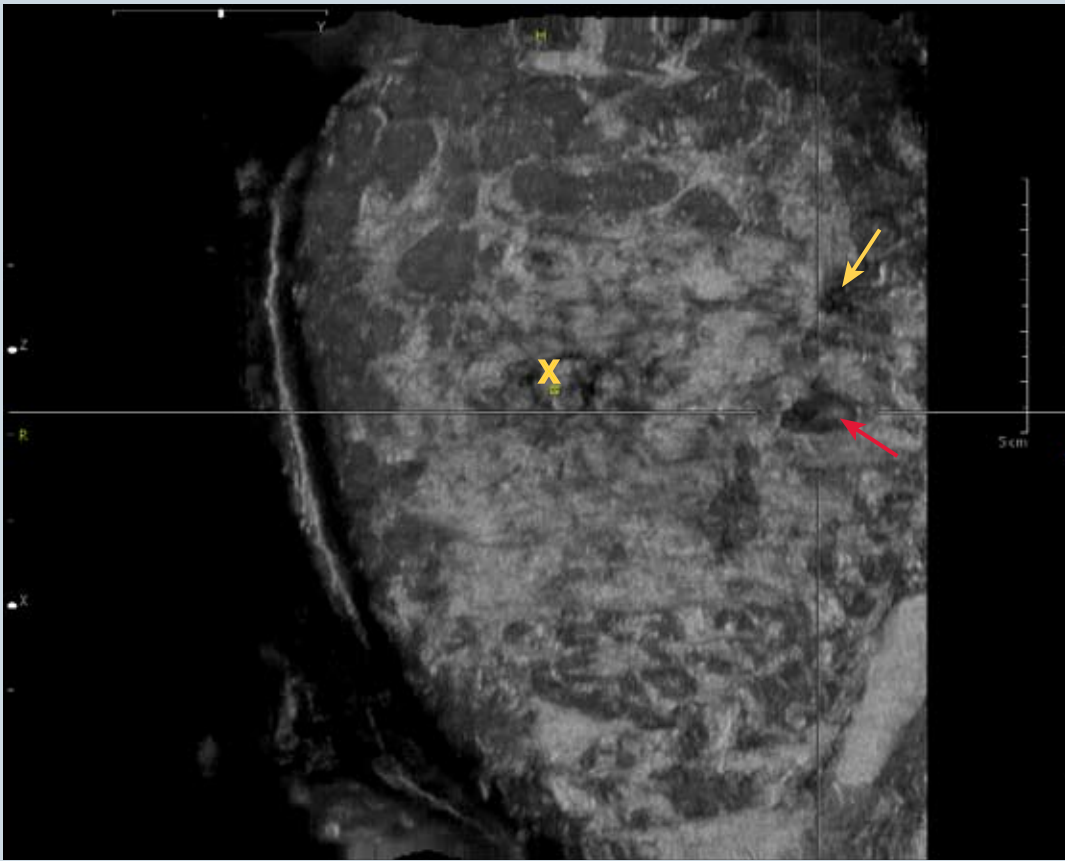
Increased patient comfort.

The ACUSON S2000™ Automated Breast Volume Scanner (ABVS) is a highly advanced, multi-purpose ultrasound system ideally suited to comfortably image patients with radiographically-dense breast tissue or a history of breast disease. In less than 10 minutes, the automated system acquires full-field volumes of the breast, provides efficient and comprehensive analysis of the 3D data, and facilitates easy, semi-automated reporting. The ACUSON S2000 ABVS offers an innovative, mobile, in-suite design to accommodate virtually any environment—from dedicated Breast Centers to Radiology Departments, Clinics, and Private Practices.

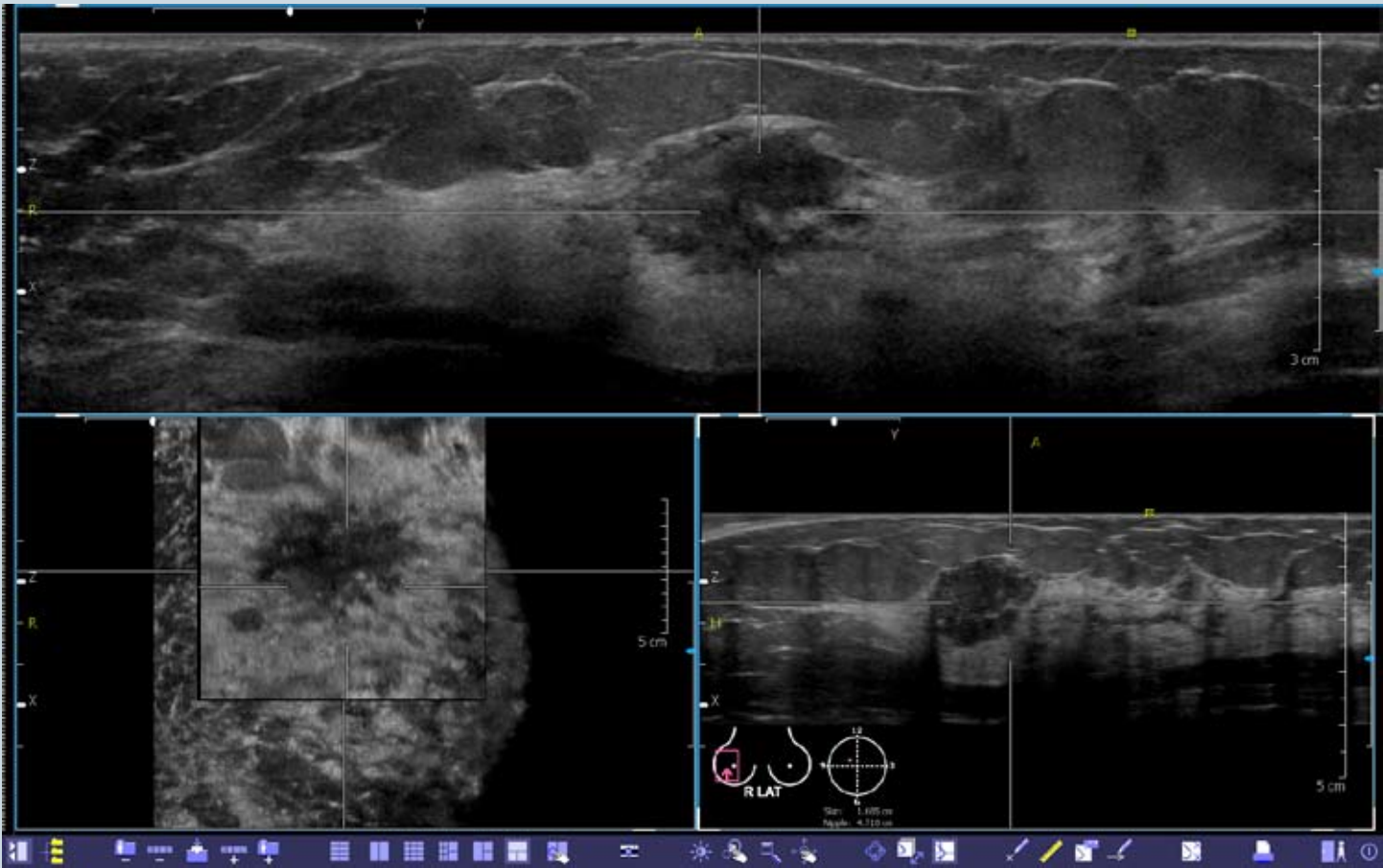
Built on next-generation acoustic technologies, the ACUSON S2000 ABVS enables never-before-seen detail resolution and the ability to acquire the unique anatomical coronal plane not available using conventional ultrasound. In addition, the system supports advanced hand held, high resolution ultrasound capabilities for biopsy guidance, color Doppler imaging, and the latest sophisticated breast applications, including eSie Touch™ elasticity imaging and fatty tissue imaging.

The ACUSON S2000 ABVS features adaptive ergonomics to ensure accurate and consistent results for you and your patient. The adjustable scanner arm allows easy manipulation of the transducer pod with minimal compression so patients can relax and breathe comfortably during the exam. The unique one-button locking mechanism simplifies and expedites volume acquisition and addresses the common problem of repetitive stress injuries.





Coronal view of the breast in the lateral position demonstrates the location of a scar (yellow arrow) and a fibroadenoma (red arrow) in relation to the nipple (yellow X).



3 on 1 hanging protocol reveals a complex malignant mass in the large acquisition plane (axial) and the corresponding orthogonal planes.



## Exceptional image quality in all planes.

### Increasing the clinical value of ultrasound for more accurate, reproducible and efficient diagnoses.

To make a precise diagnosis, you need the best information delivered efficiently. The ACUSON S2000 ABVS allows you to experience detailed, 3D images of intricate breast anatomy and pathology.

The coronal view provides a more understandable representation of the breast's global anatomy and architecture. In particular, the segmental organization of the ductal system and surrounding tissue is better visualized—a tremendous benefit of 3D technology. In addition, the coronal view provides physicians (especially surgeons) a comprehensive view of the breast from the skin line to the chest wall.

Taking advantage of Siemens' proprietary micro-pinless (MP) transducer connector technology, the ACUSON S2000 ABVS utilizes a high frequency 14 MHz automated transducer with an industry leading 15 cm x 17 cm field-of-view. The system can also be equipped with an ultra-high resolution 18 MHz high-density (HD) hand held transducer to complete the dedicated ultrasound breast solution. To further optimize high patient throughput, the system also supports innovative breast imaging applications.

- **eSie Touch™ elasticity imaging**, a qualitative imaging technique that provides further insight into potential pathology by displaying the relative stiffness of tissue
- **Fatty tissue imaging** optimizes the visualization of fatty tissue in real-time by enhancing lateral and contrast resolution
- **Dynamic TCE™ tissue contrast enhancement technology** enhances borders and reduces speckle/noise in an entire volume, not just data "slices," greatly improving subtle tissue differentiation
- **Advanced SieClear™ spatial compounding** enhances anatomic border definition and improves tissue contrast; electronic beam steering rapidly acquires overlapping images from different view angles
- **Advanced transducer technology** incorporates Hanafy lens technology and twice the elements with half the space to improve slice thickness, image uniformity and contrast resolution

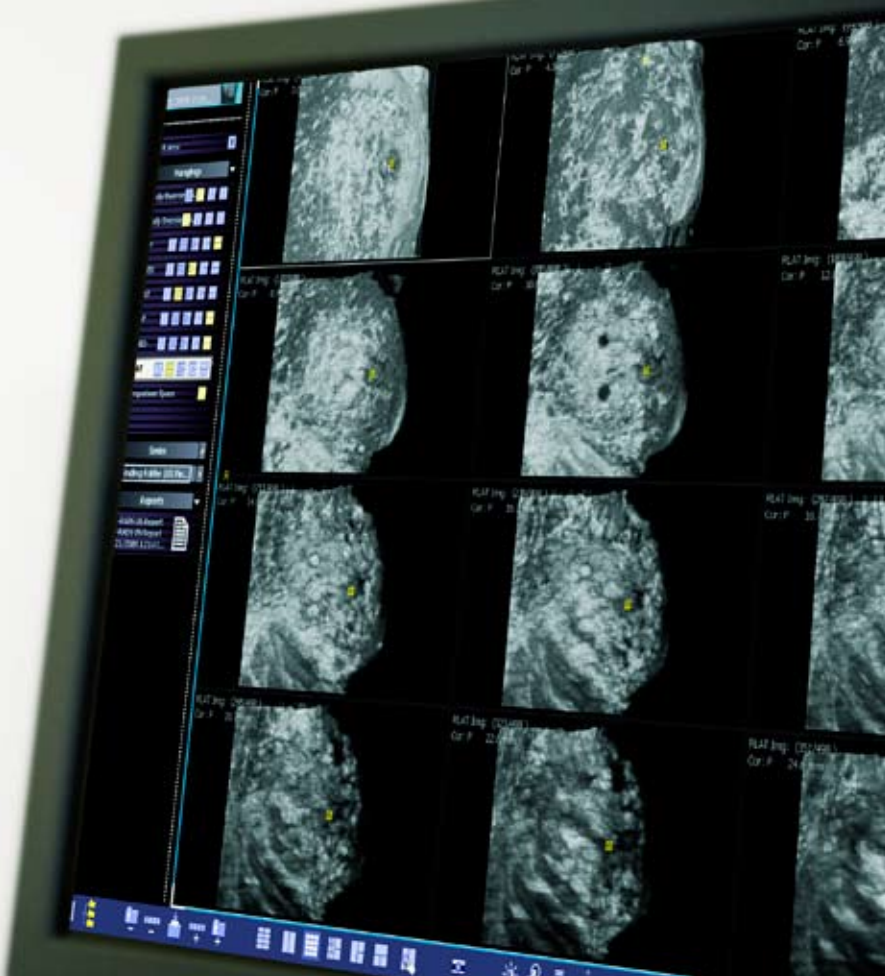


## Take the work out of your workflow. Template-driven approach for fast, accurate and complete reporting.

With the ABVS Workplace\* Siemens has taken analysis and reporting of the 3D data offline and provided you with a range of diagnostic tools designed to help you spend less time interacting with the volume and more time with the clinical information it contains. To increase diagnostic confidence, the “free rotation” tool is used to manipulate the complete volume data set—similar to performing an actual exam—eliminating the need to rescan or recall the patient. In addition, the ABVS Workplace also provides the following:

- Intuitive volume image analysis and manipulation
- Five standard orientations: transverse, sagittal, coronal, radial and anti-radial
- Positional reference markers to include location from the nipple, depth, and distance from the skin
- User-definable hanging protocols and layouts
- Comprehensive BI-RADS® ultrasound report with images, text and measurements
- Storage and archiving of studies via DVD, USB media, and other devices

With full-volume breast imaging and access to the comprehensive data, you have the reassurance that you have all the information necessary to rapidly make a confident diagnosis.



The MultiSlice hanging protocol allows you to visualize the complete volume from the skin line (upper left) through the multiple cysts (middle) to the ribs (lower right.)

## Delivering a new dimension of ultrasound breast imaging. Taking your practice to new heights.

### **Customer Care. Life.**

**Our goal is your success—over the entire life cycle.**

Performance, productivity, patient satisfaction: You want to get the best results from your investment. That's our goal too. This is why Siemens bases its Life customer care program on four key elements:

- Services and support provide a wide range of services for maximum performance in every situation from individual systems to entire organizations
- Upgrades and migrations present several paths to help your practice stay current with the latest technologies and applications
- Education and training help you keep your knowledge and expertise up-to-date and allow you to fully leverage the benefits of full volume imaging
- Information and communication offer you interactive platforms and diverse media for experiencing our latest innovations

With the Life customer care program, we not only take care of your systems, but help keep you and your practice up-to-date, so you can focus on something even more important—your patients.

### **Maximizing Your Investment**

Siemens' legendary upgradeability consistently delivers long-term value with continuous, cost-effective upgrades and updates—innovations that enable your investment to grow with your practice, meeting today's clinical needs—and tomorrow's medical challenges.

Standalone clinical images may have been cropped to better visualize pathology.

BI-RADS is a registered trademark of the American College of Radiology.

ACUSON, eSie Touch, SieClear, TCE, TGO, and S2000 are trademarks of Siemens Medical Solutions USA, Inc.

**Local Contact Information**

Siemens Medical Solutions USA, Inc.  
51 Valley Stream Parkway  
Malvern, PA 19355-1406 USA  
Telephone: +1-888-826-9702  
[www.usa.siemens.com/healthcare](http://www.usa.siemens.com/healthcare)

Europe: + 49 9131 84-0  
Asia Pacific: + 65 6490 6000

**Global Business Unit Address**

Siemens Medical Solutions USA, Inc.  
Ultrasound  
1230 Shorebird Way  
Mountain View, CA 94043 USA  
Telephone: +1-888-826-9702  
[www.siemens.com/healthcare](http://www.siemens.com/healthcare)

**Global Siemens Headquarters**

Siemens AG  
Wittelsbacherplatz 2  
80333 Munich  
Germany

**Global Siemens  
Healthcare Headquarters**

Global Siemens AG  
Healthcare Sector  
Henkestrasse 127  
91052 Erlangen  
Germany  
Telephone: + 49 9131 84-0  
[www.siemens.com/healthcare](http://www.siemens.com/healthcare)

**Legal Manufacturer**

Siemens Medical Solutions USA, Inc.  
Ultrasound  
1230 Shorebird Way  
Mountain View, CA 94043 USA  
Telephone: +1-888-826-9702  
[www.siemens.com/healthcare](http://www.siemens.com/healthcare)