

# Breast Imaging

## REAL SOLUTIONS

Understanding challenges  
Providing answers  
Improving outcomes



With the ACUSON Antares™ ultrasound system, premium edition, Siemens brings to market the industry's most innovative technologies specifically designed for the breast imaging specialists. The Breast Imaging Application includes eSie Touch elasticity imaging, Fatty Tissue Imaging, and Advanced SieClear spatial compounding technology. These complementary imaging techniques lead the industry in increasing diagnostic findings and confidence as a complete clinical solution specifically designed for breast imaging. Secondary applications include Thyroid, Peripheral Vascular, and Musculoskeletal imaging.

### Highlights

#### eSie Touch™ elasticity imaging\*:

Unique real-time qualitative imaging method that calculates and displays the relative stiffness of tissue. The live dual image display of the Elastogram and the standard B-mode image enhances ease of use and provides quantitative comparison with area and distance ratio measurements. Unique mapping options in grayscale and color are also available.

#### Fatty Tissue Imaging\*:

A speed-of-sound adaptation specifically designed for fatty tissue. Optimizes the image in real-time to enhance B-mode image quality with improved lateral and contrast resolution for superior ultrasound imaging of the fatty breast.

#### Advanced SieClear™ spatial compounding\*:

This real-time compounding technique applies industry-first 13 lines of sight at greater steering angles to improve contrast resolution and border detection. Siemens' Dynamic TCE algorithm simultaneously achieves speckle reduction, contrast enhancement and improvement in coherence of anatomical structures. Tissue stabilization reduces the artifacts seen in compounded images, yielding unprecedented image clarity.

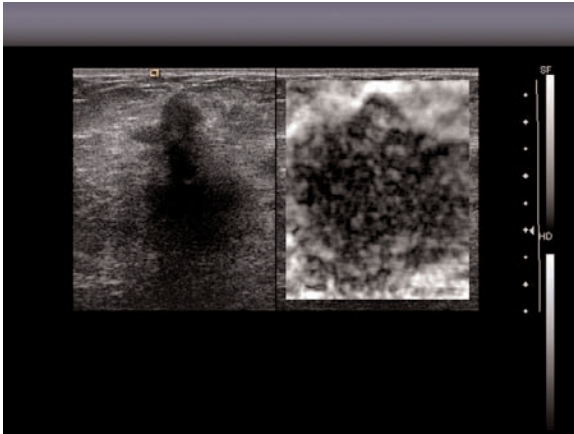
#### SieScape™ panoramic imaging:

Provides extended field of view images acquired with real-time high-resolution gray scale imaging. Allows display and measurement of large structures, providing a global view for orientation. Also available for Power Doppler imaging.

#### Virtual Format Imaging:

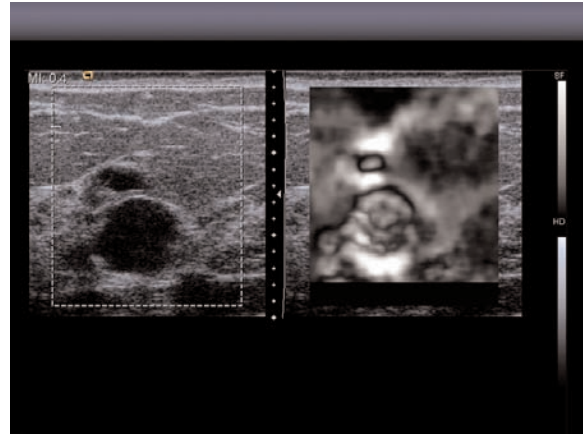
Provides 2D beam steering including wider field of view, trapezoidal image format for visualizing large superficial structures.

**ACUSON Antares ultrasound system, premium edition**  
Industry-leading dedicated platform for breast imaging



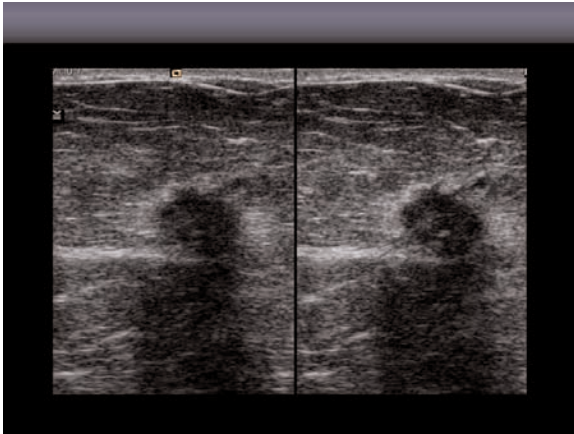
#### eSie Touch elasticity imaging

- Improves border delineation of this biopsy-proven invasive ductal carcinoma. Live dual imaging provides real time comparison of elastogram to standard 2D imaging.



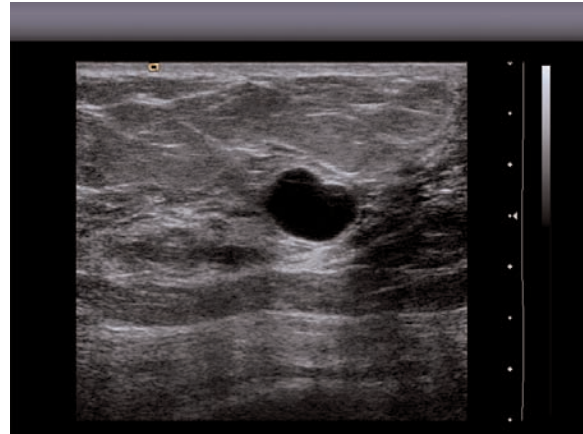
#### eSie Touch elasticity imaging

- Provides additional qualitative information by demonstrating the typical internal characteristics pattern of three cysts.



#### Fatty Tissue Imaging

- Allows for speed of sound correction for improved 2D resolution, resulting in easy identification of tiny spicules not well visualized by conventional 2D imaging.



#### Advanced SieClear spatial compounding with Dynamic TCE technology

- Enhances the contrast resolution within the breast tissue, allowing for improved border detection and posterior cyst enhancement.

\*Available on ACUSON Antares, premium edition only.

© 02.2007, Siemens AG  
Order No.  
A91US-43-1C-4A00  
Printed in USA  
WS 0207 5.0

#### Headquarters

Siemens Medical Solutions USA, Inc.  
51 Valley Stream Parkway  
Malvern, PA 19355-1406 USA  
Telephone: +1-888-826-9702  
[www.usa.siemens.com/medical](http://www.usa.siemens.com/medical)

Europe: +49 9131 84-0  
Asia Pacific: +65 6341 0990  
Latin America: +1-786-845-0697

#### USA

Siemens Medical Solutions USA, Inc.  
Ultrasound Division  
1230 Shorebird Way  
P.O. Box 7393  
Mountain View, CA 94039-7393 USA  
Telephone: +1-888-826-9702