

Cardiology



The ACUSON X300™ ultrasound system, premium edition (PE) provides complete cardiac imaging performance and versatility across a wide range of cardiac patients. From standard echo applications—including stress echo, color M-mode, adult TEE and left ventricular opacification—to intracardiac imaging, the ACUSON X300 PE completes cardiac imaging assessment. The system incorporates the standard quantification tools of spectral and color DTI™ Doppler tissue imaging, plus anatomical M-mode. Optional advanced quantification capabilities, imaging applications and specialty transducers enable comprehensive cardiac assessment.

Highlights

P5-1 transducer technology:

Single crystal design provides increased signal resolution and broad bandwidth for optimal image quality across all adult patients.

ACUSON AcuNav™ ultrasound catheter:

Enables procedure visualization and device placement monitoring with a fully functional 8F or 10F intracardiac transducer.

V5Ms TEE transducer:

Delivers imaging excellence in a multiplane adult TEE probe. One button 90 degree rotation and harmonic imaging assist visual interrogation.

Anatomical M-mode:

Angle-corrected M-mode measurements available during live, cineloop, and DIMAQ image review.

syngo® Velocity Vector Imaging™ (VVI) technology:

A sophisticated 2D tracking algorithm provides accurate rotation, strain and strain rate calculations (longitudinal, circumferential and radial) of myocardial mechanics.

syngo® Auto Left Heart (Auto LH) technology:

Uses progressive pattern recognition technology based on a comprehensive database providing expert-like measurements of ejection fraction, end diastole volume and end systole volumes of the left ventricle and left atrium.

syngo® fourSight™ TEE view:

Facilitates analysis of complex anatomy in 3D display of cardiac structure and function from unlimited perspectives.

syngo® Mitral Valve Assessment (MVA):

Renders precise 3D anatomical mapping of mitral valve structure, spatial relationships, and blood flow.

ACUSON X300 ultrasound system, premium edition

The most versatile, compact platform for today's broad range of cardiac imaging challenges

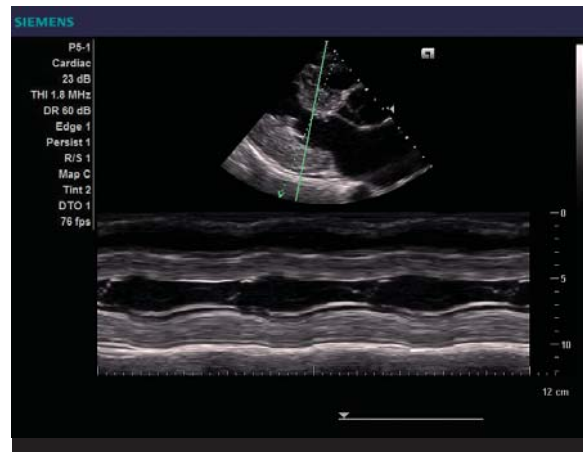
www.siemens.com/healthcare

SIEMENS



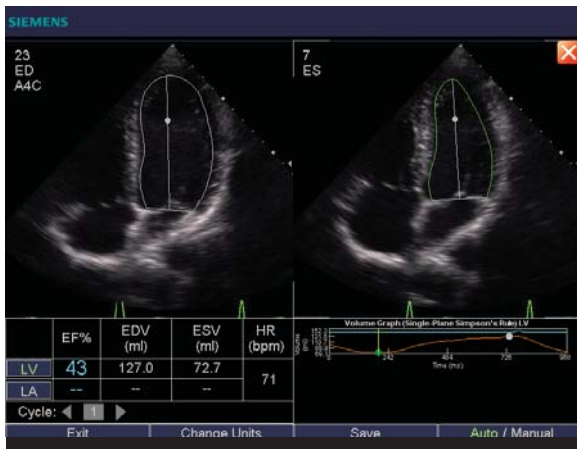
Adult TEE Imaging

- Sensitive color Doppler velocity identifies an incompetent mitral valve.



Anatomical M-mode

- Provides off-axis alignment for M-mode measurements.



syngo Auto LH

- Automatically calculates left atrial and left ventricular volumes and ejection fractions.



syngo VVI

- Displays direction, relative velocity and motion measurements at any point in the cardiac cycle.

Standalone clinical images may have been cropped to better visualize pathology.

AcuNav, ACUSON, DTI, *fourSight*, Velocity Vector Imaging and X300 are trademarks of Siemens Medical Solutions USA, Inc. and *syngo* is a trademark of Siemens AG.

© 07.2008, Siemens Medical Solutions USA, Inc.
Order No. A91US-97-1C-4A00
Printed in USA
WS 0708 15.0

Headquarters

Siemens Medical Solutions USA, Inc.
51 Valley Stream Parkway
Malvern, PA 19355-1406 USA
Telephone: +1-888-826-9702
www.usa.siemens.com/healthcare

Europe: +49 9131 84-0
Asia Pacific: +65 6341 0990
Latin America: +1-786-845-0697

USA

Siemens Medical Solutions USA, Inc.
Ultrasound Business Unit
1230 Shorebird Way
P.O. Box 7393
Mountain View, CA 94039-7393 USA
Telephone: +1-888-826-9702